

Mississippi Clubwoman



Volume LXXII, Number I

Fall/Winter 2022



Official logo for the 2022-2024 GFWC-MFWC Administration.

The mission of the GFWC-Mississippi Federation of Women's Clubs, Inc. is an organization of women whose goal is personal enrichment leading to volunteer service that benefits the community, state, nation and world.

Founded on May 25, 1898 and a member of the General Federation of Women's Clubs Since 1904.

CONTENTS

Messages from the Executive Board	
Awards from 2021 GFWC Annual Convention	
Budget	
Club Resources	
GFWC-MFWC Directory	
State and District Dues	
2022-2024 Dues Form	
GFWC News.....	

IMPORTANT DATES

October 20 - 23, 2022	GFWC Southern Region Conference, Jekyll Island, Georgia
November 1, 2022	MFWC State Club Dues must be postmarked by this date each year to receive Honor Club status.
January 1, 2023	MFWC State Club Dues must be postmarked by this date each year for club reports to be judged and to be eligible for awards.
January 1, 2023	MFWC District Club Dues. Please note: District Dues must be sent to your District Treasurer.
February 1, 2023	Must be postmarked by this date each year for: MFWC Club Reports, Hebron Memorial Scholarship applications, Challenge Grant applications and GFWC Writing Contest entries.
February 10, 2023	Must be postmarked by this date each year: MFWC Clubwoman of the Year Award applications, Juniette of the Year Award application and MFWC LEADS applications.
February 15, 2023	Must be postmarked by this date each year: MFWC Scrapbooks and Yearbooks.
March 1, 2023	Must be postmarked by this date each year: Jennie Award nominations, Sarah Peugh Butterfly Scholarship application and Club History Form.

Mississippi Clubwoman

Volume LXXI, Number 1, Fall Issue

Editor: Lisa A. Harris
822 SCR 115 S
Raleigh, MS 39153
601-940-1519
lisaharris@outlook.com

Circulation Editor, Assistant Editor, Handbook Editor,
Website Chair and MCT Coordinator:
Lisa A. Harris

GFWC-MFWC State President:
Theresa Buntyn
P. O. Box 355
Decatur, MS 39327
601.685.9550 - c
mfwtctab@gmail.com

Website: www.gfwc-mfwc.com

Official Publication:
Mississippi Clubwoman

Article Deadlines:

Spring 2023	February 12, 2023
Fall 2023	August 12, 2023
Spring 2024	February 12, 2024

- ◆ Please send **ALL ADDITIONS (with DUES)** of your club roster directly to State Treasurer Becky W. Watkins, P. O. Box 749, Quitman, MS 39355. She will, in turn, forward to Circulation Editor, Lisa A. Harris.
- ◆ Please send **ALL DELETIONS AND CHANGES** of your club roster directly to Circulation Editor, Lisa A. Harris.

GFWC Mission Statement “The General Federation of Women’s Clubs is an international organization dedicated to community improvement through volunteer service and to providing opportunities that strengthen the role of women.”

MFWC Mission Statement “The Mississippi Federation of Women’s Clubs, Inc. is an organization of women whose goal is personal enrichment leading to volunteer service that benefits the community, state, nation and world.”

Messages from the Executive Board

GFWE-MFWC President Theresa Buntyn

Dear Federation Friends,

I am honored and pleased to serve as your State President for the 2022-2024 MFWC Administration. Our theme is "Getting Back to Our GFWE Roots" by promoting libraries, education, and literacy.

Our theme is not new, for our clubs across Mississippi, but allows us to focus on the community service programs that we already support at all levels of education. Sandy Hauenstein, GFWE Education and Libraries Chairman announced "Bring Sparkle to Public Libraries" is the Education and Libraries Community Service Program's Community Connection Initiative for this Administration. We are excited to have clubwomen take a significant role in working with their local libraries". What an opportunity we have to serve our state's local libraries and participate in educational programs. I challenge our clubs to promote the President's Special Project throughout the 2022-2024 administration by promoting the following projects:

- September-2022, Increase sign-up for Library Cards at your Local Library by celebrating Library Card Sign-up Month in September. Events such as a Fall for Books Funfest for children with games, face painting, prizes, and a library card sign-up table.
- December 2022, Create a Christmas tree or decoration and donate it to the public library for the month. Or decorate a car or float and enter a Christmas parade with the club and public library.
- March 2023, Decorate a chair for Dr. Suess Day and provide it to the local library or school library.
- April 2023, State convention service project "BIG HOUSE BOOKS".
- June 2023, Club participation in the summer reading program
- September 2023, Organize literacy events to "get your school reading." Organize book-themed events, such as a book walk, book fair, book bingo, book drive or swap, book reading challenge, a book club of "reading buddies," or a book report contest on "My Favorite Book."
- December 2023, Donate or solicit prizes for awards, Member read a Christmas Story to a group of children from an elementary school, daycare, etc., or club provide a Christmas stem activity during December. <https://www.steamsational.com/christmas-science-experiments/>

2022-2024 Administration logo.

Available from Lisa a. Harris



Theresa Buntyn, President 2022-2024

- March 2024, Organize a Read Across America event in March during National Reading Month. Consult the Read Across America website (<https://www.nea.org/professional-excellence/student-engagement/read-across-america>) for suggested books, event ideas, and promotional materials for your local library or schools.
- April 2024, State Convention, Final service project to be announced.

We were able to jump-start our Presidents Special Project as Summer Institute held at, of course, the Mississippi Library Commission Building. We had a fun time hearing from Dr. Hulen Bivens. He expressed appreciation from the Mississippi Library Board, and excitement from Regional Directors and Librarians across the state concerning our new project. We ended our day by having an ESO fundraising auction which raised over \$200 for the Mississippi Library Commission.

(Continued on page 4)

(Continued from page 3 - Messages from GFWC-MFWC Executive Board)

I have been so excited to learn early on how our clubs are supporting our libraries with ideas of increasing the number of library cards and hosting different events at our libraries. One club president reported, "We are making our Library the new place to enjoy activities in our town. I cannot wait to read our reports in February to see the awesome projects our clubs have done by "Living the Volunteer Spirit."

One of our significant goals for this administration is to increase our membership. Dr. Carolyn Tedford is visiting many clubs to share her sparkle theme and ideas on how to improve our membership. Invite her to come to your club for new opportunities to learn how to grow your club.

Another goal is to develop our Leadership. Our 2023 winter board meeting will include a Leadership opportunity in the afternoon, that is not only for our Leads candidates but any member who wants to learn and grow in Federation.

Let's Dream Big and Sparkle More by showing our community and state that our greatest gift is our MFWC members "Living the Volunteer Spirit. I want to thank each of you for always being willing to "Bloom Where You Are Planted," taking advantage of opportunities on your journey in life, and willingness to serve and be grateful.

In Appreciation for Your Volunteerism,
Theresa

GFWC-MFWC President-elect and State Membership Chairman
Dr. Carolyn S. Tedford

I am honored to serve as President-elect and State Membership Chairman for the Gems of Mississippi. The Gems of Mississippi sparkle and shine through their actions of giving and serving others every day throughout the state and nationally.



Dr. Carolyn S. Tedford

Recruiting and retaining members throughout the year is crucial to the success of clubs, GFWC Mississippi and GFWC. The first step is to invite and encourage women to join your local club by sharing your passion for community service. GFWC Mississippi offers diverse opportunities and events for all members through GFWC Community Service Programs, Special Advancement Areas, and MS Special Emphasis Programs. It is important that each club has a mentoring program for new members. Mentoring programs not only keep new members from feeling overwhelmed but also builds and strengthens harmonious relationships. Celebrate and recognize the dedication and hard work of each member. GFWC is offering one hundred \$50 grants for club member recruitment activities in conjunction with the Membership "Sparkle and Shine" Recruitment Campaign. These grants are distributed on a first come basis and can be used for any of the Membership Recruitment Campaign seasonal cycles. Applications are accepted on a rolling basis and will be available until funding is depleted. A club that recruits three new members during each quarter will have twelve new members at the end of the year. The GFWC Member Portal provides a wealth of information in the Membership Toolkit regarding membership recruitment and retention, mentoring, recognition, membership orientation and starting new clubs. All this information can be located under My Digital Library – Resources- M. It takes dedication and commitment to ensure the success of a recruitment campaign.

GFWC 2022-2024 MEMBERSHIP "SPARKLE and SHINE" RECRUITMENT CAMPAIGN

RETENTION: "Pearls-Strengthening Relationships" - June, July, August; Report due September 1

RECRUITMENT: "Ruby-Share Your Passion"- September, October, November; Report due December 1

MENTORING: "Emerald-Harmonious Connections" - December, January, February; Report due March 1

RECOGNITION: "Diamond-Shine Bright" - March, April, May; Report due June

(Continued on page 5)

(Continued from page 4 - Message from GFWC-MFWC President-elect and State Membership Chairman Dr. Carolyn S. Tedford)

It is important that each club send names of new members to Becky Watkins, GFWC-MFWC Treasure and Lisa Harris. At GFWC Mississippi State Convention the top three clubs gaining and retaining the most members will be recognized and receive a monetary award.

Please invite this officer to your club to talk about membership and to celebrate achievements. Thank you for your dedication and commitment to serving others and making a difference.

Wishing all a Merry Christmas and a Happy New Year,
Carolyn

MEMBERSHIP "SPARKLE AND SHINE"
RECRUITMENT CAMPAIGN

Join GFWC clubs nationwide in our popular membership recruitment campaign

June, July, and August
RETENTION
"Pearls - Strengthening Relationships"
Report due September 1

September, October, and November
RECRUITMENT
"Ruby - Share Your Passion!"
Report due December 1

December, January, and February
MENTORING
"Emerald - Harmonious Connections"
Report due March 1

March, April, and May
RECOGNITION
"Diamond - Shine Bright"
Report due June 1

GFWC-MFWC Vice President Meri F. Newell

Greetings from your friendly neighborhood MFWC Vice President! It is hard to believe that summer is fading and fall is about to begin. It seems that we were just celebrating our first live State Convention in two years, but here we are at the beginning of another year in which we can think of new ways to serve others and be a force for good in our communities.

This Dean of Chairs has already been hard at work with our tech guru, Lisa Harris, preparing a revised Reporting Guide for the 2022-2024 MFWC Administration. You should be receiving it very soon if you haven't already by the time this fall Clubwoman Magazine reaches you. We hope that it will provide all of the information that you will need to give an account of what your club has done this year to make the world a better place. At the end of the day, that is really the point of reporting; it is not about the awards and competition; it is the history of what your club has accomplished through the club year, and a record that future clubwomen can look back through and gain inspiration.

Even though Covid created challenges for most clubs in 2020 and 2021, clubwomen used those challenges to think differently about familiar projects and outside the box for new and different projects and programs. Use that energy to consider how you can make good connections, partnerships, and collaborations with your town's government, businesses, civic groups, and more to reach even more people and shine a light on what Woman's Clubs can do to make things happen.

The GFWC Top 10 Projects from each reporting area are available now on the GFWC Member Portal. If you are in need of new inspiration, visit the portal and take a look at these projects. Many of them are things that we can do regardless of club size or money available. Our own Florentine Evening Club was recognized for their "Egg My Yard" project!



Meri F. Newell

The main thing to keep in mind with reporting is that it is an ongoing process. If you are a chairman in your club, create your report, list your projects as you do them, and fill the numbers in as you receive them. If you are a club member, turn in your hours, donations, etc. in a timely manner. It can be as simple as keeping a calendar and writing down your club work, hours, money, etc. on the day you participate in club-sanctioned work. We are all busy (if you are a clubwoman, you are busy!); just find a way that you can keep up with information so that reporting time can be less stressful for all concerned.

If you have any questions or ideas about the reporting process, please contact me at Newellmf57@gmail.com or 601-307-6004. I will be more than glad to help you. I would also love to visit your club and talk to you about reporting and streamlining the process. Have a great Fall and Winter!

GFWC-MFWC Secretary Susan Shurden

Since the Convention, your Executive Committee has been very busy dealing with the Headquarters Exit Strategy. The following motions have been made and acted upon.

- Notification of all donated items being removed from Headquarters by June 3, 2022, was sent.
- GFWC Gobels from MFWC Headquarters to be donated to GFWC Headquarters.
- 2022-23 Budget was approved.
- 2022-23 Dues form was approved.
- The Executive Committee was authorized to take any appropriate action regarding

the Headquarters exit with the understanding that those actions be reported to the Executive Board at the next meeting.

- Approved a recommendation that a second auction be held for the items that received no bids in the first auction.
- The President's bed be relocated to the Gavin House which will remain in a controlled environment and overseen by an MFWC club. If a family member of the donated bed claims and proves ownership, they will be allowed and responsible to remove the bed at their own

personal cost.

- Approved an expense of \$1,700 from the convention account for the 2023 Southern Region Convention fundraiser.
- Approved the authorization of our President and Treasurer to set up a Venmo account for MFWC.



Susan Shurden

Hoping everyone has a safe and happy holiday season.

GFWC-MFWC Treasurer Rebecca "Becky" W. Watkins

I feel so fortunate to serve with a group of women in GFWC-MFWC that are always willing to help each other, especially during a time of "transition". Serving as your GFWC-Mississippi Treasurer is both an honor and a challenge. Thankful for our Federated sisters working together to make our organization strong, supportive and a work in progress, and the support I've received as a "new" Treasurer.

With the finalization of the GFWC-MFWC Headquarters Exit, we have been blessed that everyone stepped up and this process is complete. This transition went well, and if ever in Quitman, please come by The McNair-Gavin House to see our historical GFWC-MFWC Presidential Bed from our Headquarters where the bed is located and preserves a piece of our history.

I appreciate all those that have completed their Dues Forms! While I'm still "learning", I would like to remind you that I send our membership dues in to GFWC in mid-

February each year; therefore, we collect our club dues in the preceding months. For your club to obtain Honor Club Status, your dues must be postmarked by November 1, and many have met already met their reporting criteria. To qualify to have your club reports judged or to receive rewards, your dues must be postmarked by January 1. While you can certainly send in dues later, please be as prompt as possible. I am required, as your MFWC Treasurer, to get my report to GFWC by February 1. Just remember, you do not have to wait until every potential member has paid their dues to send them in to me. If it's getting close to these deadlines, and a few haven't paid, please send in what you have and the rest when you get them. Just be sure your roster only includes the ones who have paid. Then add the others when you send in their dues.

As to new members joining in the spring, your club can prorate their portion of dues, but they still need to pay the \$30 for General Membership (\$15 for MFWC & \$15 for GFWC) and \$25 for Juniorette Members (\$15 for

MFWC & \$10 for GFWC).

These can be sent in at any time with an updated club roster. When this happens, I will send in an updated

Membership Report to GFWC at the end of the fiscal year in May and pay any new membership dues then. Thanks to Belinda's previous input, and as she put it, I hope this is clearer than mud! If you have any questions, please do not hesitate to contact me! It's never too late or the wrong time to send in donations, so keep them coming!

In Federation Appreciation,
Becky



Becky Watkins

GFWE-MFWC District Presidents

GFWE-MFWC Northern District President Lisa McGee

**Volunteers are not paid
--not because they are
worthless, but because they
are priceless**

Greetings from the Northern District! I hope everyone had a great summer. I know I did. Great beach trips with family and friends are always fun. Fall is here. Getting back into the groove of school, the new club year, and fall sports and activities.

With State President Theresa Buntyn, I have already had the

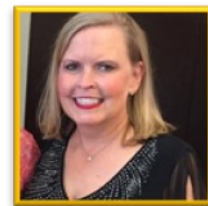
pleasure of visiting with Woman's Club of Booneville for the celebration of their 100th year of volunteer service. Also had the pleasure of meeting Mrs. Ruth Galloway. She is in her 71st year of membership in Woman's Club of Booneville. She has been active over the years in supporting the library in her area. It was an awesome and inspiring visit.

I would love invitations to visit all the clubs in the Northern District! Please continue to remember self-care, physically, mentally, and

emotionally. To be able to volunteer and serve our communities and others, we must first take care of ourselves.

We are working on finalizing the location of 2023 MFWC State Convention which will be hosted by Northern District ...more to follow later.

Hope everyone has an awesome Christmas!



Lisa McGee

GFWE-MFWC Central District President Theresa T. Berryhill

Greeting from the Grand Central District,

Hope everyone had a great Thanksgiving and was able to enjoy a safe holiday with their family. As we look forward to Christmas and the Christmas holidays, please take precaution against COVID-19, Flu and RSV.

In 2023, the Central District will

host the State Convention in/around the Pearl/Jackson/Raymond area. In the meantime, the GFWE-MFWC Decatur Woman's Progressive Club will be hosting our District Convention. Lisa Harris and I will be visiting with them in the new year to get an preview of what they have plan for our 2023 convention. I know that this convention is in good hand with Decatur hosting our convention.

Finally, I am here to serve you! Please call or email and let me know how I can help you! Call me at 601.789.5422 or email me at tt_berryhill@hotmail.com. I will be glad to meet with you or help you find the resources that you need to grow your clubs.



**Theresa T.
Berryhill**

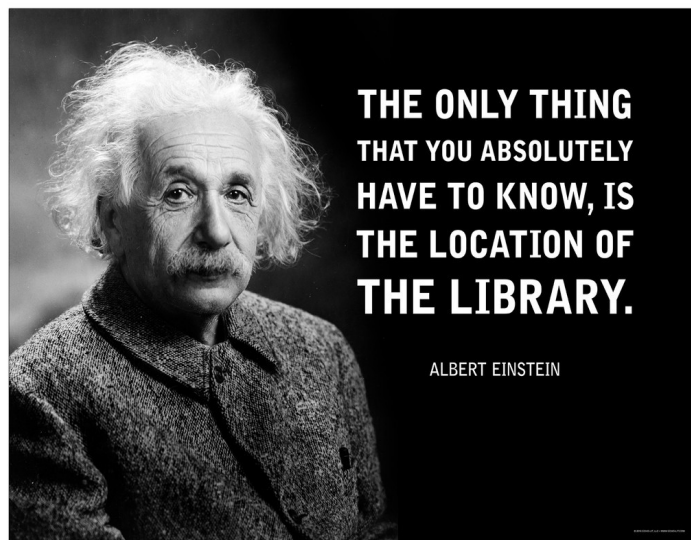


Save The Date

**2023 GFWE Southern Region
Conference**

10.26-29.23

Mississippi Gulf Coast



GFWC-MFWC Southern District President Laura Ann Trigg

Greetings from the Southern District. It is an honor to serve as your Southern District President for 2022-2024. We began this new administration with our summer institute in July. "Getting Back To Our GFWC Roots". Our Southern district clubs have hit the ground running! From all the activity I am seeing and hearing our Southern sisters are working hard toward our Presidents Special Project and many other projects.



Laura Ann
Trigg

Reporting time is closely upon us. Now is the time for clubs to begin compiling this years projects for reporting. Gosh didn't we just do this?? The task as a federated sister never ends but oh at the reward. The Southern District convention date has been set for March 11, 2023 (location TBD). I am looking forward to seeing all of you at convention both district and state. It would be an honor to visit with our southern district clubs throughout these next 2 years. Getting together can offer ideas to share throughout our district. I am always ready for a road trip.

Thank you Southern District for all you do. Our GFWC-MFWC administration is wonderful and questions can be answered with one call. As your Southern District President, I look forward to hearing from you. Call or text me at 601/735-7407.

Yours in federation,
Laura

Messages from Officers and Chairmen

GFWC-MFWC Historian Libby Everett

The Club History Form should be filled out once a year. It is a report of your club's activities from January 1-December 31, 2022 and it is a very important document to preserve your club's history and identity.



Libby Everett

A fillable Club History Report Form is available at GFWC-MFWC website at http://www.gfwc-mfwc.org/pdf/GFWC_MFWCForms

Club History Report Forms must be postmarked by March 1, 2023. Please note: if the postmark deadline falls on a Sunday or a holiday, the application/form must be postmarked prior to the postmark date.

Mail or email your completed Club History Form to Libby D. Everett, GFWC-MFWC Historian, 113 Temple Road, Petal MS 39465 or email to libby_everett@hotmail.com

A second copy of the Club History Report Form should be mailed or emailed to Theresa Buntyn, GFWC-MFWC President, P.O. Box 355, Decatur MS 39327

Please contact me if you have questions.
Libby Everett
GFWC-MFWC Historian

GFWC-MFWC ESO Chairman Laura Ann Trigg

Greetings my fellow GFWC-MFWC club members. I hope your Club's year is off to a great start. As your GFWC Epsilon Sigma Omicron or ESO chairman, I wanted to take this opportunity to encourage each of you to join ESO. Many thanks to those who are submitting your ESO reports to me. Guidelines on the steps to join ESO can be found our GFWC-MFWC web page.



Laura Ann
Trigg

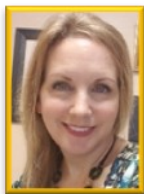
In addition, I would like to encourage you to join the GFWC ESO Book Club on Facebook. ESO provides clubwomen with a structured reading program that is educational and stimulates a desire for self-improvement. Members can participate in ESO as part of a reading group or on their own. The program provides membership, awards and certificates, pins, reading list, and a framework in which to pursue continued self-improvement through reading. Reading improves your focus, memory, empathy and communication skills. It can also reduce stress and improve mental health. So, pick up that book and start reading! I look forward to hearing from my Mississippi sisters.

You may contact me for further information or questions at trigg@wcdms.com.

Yours in federation,
Laura

GFWC-MFWC Arts & Culture Chairman Jodi Brickson

I am very excited to serve as your chairperson for Arts and Culture. As a lifelong artist, creativity and inspiration are important components of who I am. My greatest joy is found in encouraging and helping others to find creative ways to engage with and improve the communities in which they live. This terms Community Connection Initiative is right up my alley!



Jodi Brickson

COMMUNITY CONNECTION INITIATIVE: CREATING A PATH TO COMMUNITY GEMS

For the 2022 – 2024 term, the GFWC Arts and Culture Community Service Program seeks to encourage clubs to take an active role in creating and enhancing their community by creating projects and opportunities that develop skills, awareness, and appreciation of both Art and Culture. It is designed to inspire clubwomen and ignite within them a desire to make the world a more beautiful, thoughtful, and caring place.

I plan to help you find ways to engage with your communities using Arts related events and activities.

PROJECT IDEAS:

- Partner with local City and Chamber of Commerce to create a brochure highlighting Arts and Culture in your area.
- Sponsor Arts events in your community (concerts, movies in the park, Artist Meet and Greets).
- Plan group outings to visit museums, plays, concerts, and other events.
- Host historical tours in your area.
- Post on social media about Arts events on a community page.
- Work with a local artist to create a mural for your town.
- Engage with local schools and homeschool groups to submit art for the Youth Art Contests.

There are so many ways we can engage and inspire our communities through art. I would love to share ideas and encourage all clubs to find projects that allow you to make a positive impact in your communities.

GFWC-MFWC Education & Libraries Chairman Lisa McGee

Greeting to all of my fellow MFWC club members. I am looking forward to an awesome club year. It is an honor to chair this community service program. I was very excited when President Buntyn asked me to be Education and Libraries Chair. The public library is near and dear to my heart. I have many fond memories with my mom from visiting the local library. And as we all know, GFWC has held an important place in creation and support of public libraries.



Lisa McGee

This community service program coincides with President Buntyn's President's Special Project, "Getting Back To Our GFWC Roots" by promoting public libraries, education and literacy! This opens so many volunteer opportunities. And that is exciting to have an opportunity to make a difference on so many levels. Public libraries are a socioeconomic equalizer in a community. The public library gives a child an opportunity to check out books to read for pleasure or research for school projects, an adult the ability to use computers for various reasons such as continuing education and job searches or applications and older adults the opportunity to check out books to read for pleasure or book clubs and other socialization activities.

Not only can we support local and school libraries by making monetary donations, we can also assist with reading programs by actually being a reader or providing snacks, crafts or other treats. The libraries also have other needs including hand sanitizer or wipes, items for their kitchens and meeting rooms. Also, volunteer opportunities are available by reading to classes at local schools, donating books to school libraries for their AR reading programs, and prizes for AR reading programs.

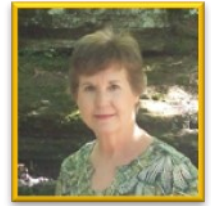
This community service program has so many opportunities to serve and make an impact. President Buntyn has sent out suggestions for volunteer opportunities for different times of the year to each of your club presidents.

I have no doubt the creativity of our MFWC members will shine and truly make a difference in our schools and communities.

GFWC-MFWC MPB Chairman Sue S. Freeman

“You. That’s who.

You may not think of yourself as a hero, but in our book, your generous support of Mississippi Public Broadcasting and your selfless investment in our public service mission makes you a hero in the truest sense of the word. **Thank you.** As our partner in this great public media enterprise, your support makes an impact that goes far beyond broadcast, impacting thousands of lives each and every day.



Sue S. Freeman

And while there’s no question that the last few months have been challenging, and the news of the day can sometimes be difficult to hear, it’s your support that helps our community navigate our rapidly changing world, make informed decisions, and explore the vital issues affecting us all. You breathe life into storytelling that makes every resident in the region feel seen and heard. And your generosity guarantees free access to our programs and services, for anyone who needs it – one of the founding principles of public media.”

As MPB enters its 6th decade of service to Mississippi residents, it remains committed to its original mission of providing “educational and instructional professional growth and public service programs for the students and citizens of Mississippi.”

The GFWC-MFWC clubs of 1968 – 1970 played a vital role in lobbying the State Legislature to pass the initial legislative bill in 1969 with a funding bill passed in 1970. Today as GFWC-MFWC clubwomen, we can continue to support MPB as it continues to provide quality television, educational videos, and radio programming. **Your continuing support makes MPB possible.**

These are just a few of the many enjoyable programs that are shown by MPB: *Mississippi Roads* with host Walt Grayson; *Mississippi Outdoors*; *Masterpiece*; *Lucy Worsley* (British historian) *Investigates*; *Antiques Roadshow*; *NOVA*; *Austin City Limits*; *Palate to Palette* with chef Robert St. John and artist Wyatt Waters; *Fit to Eat*; *Secrets of the Dead*; *Frontline*; *MPB Classics*; *Great Performances*; and the various Ken Burns’ specials. MPB also has a 24/7 channel, **PBS Kids**, focused on broadcasting children’s programs.

Your club might consider having a speaker from either a MPB department or the MPB Foundation come and speak to your club. Please remember to include a generous contribution from your club to MPB on your MFWC dues form.

Programs and projects are reported on a separate MFWC reporting form that records individual contributions to MPB, MPB club membership, local MPB membership drives, publicizing MPB programs in local media, legislative contact, and other support. This can be cross-reported in the Education and Libraries CSP.

For more information on MPB, visit the website, www.mpbonline.org.

If you have any questions or need assistance, please contact me via email at: Suefreeman5254@gmail.com or by calling or text at 601-946-9297.



Save the Date!

GFWC-MFWC State Convention 2023

April 20-22, 2023

Hosted by Northern District

Lisa McGee, District President

GFWC 2021 Program Statistics

Source: GFWC website

Each year, GFWC calculates the total amount of projects, volunteer hours, and both in-kind and dollars donated for the work of its clubs. The most recent data is available in the 2021 Annual Program Statistics Report. In addition to the total calculations, the data is broken down between each of the GFWC Special and Community Service Programs and the Advancement Plans that were active in the 2021 calendar year.

GFWC Signature Program

Number of Projects: 2,521
Volunteer Hours: 108,630.50
Dollars Donated: \$465,699.83
In-Kind Donations: \$761,600.38

Civic Engagement and Outreach

Number of Projects: 9,776
Volunteer Hours: 471,373.50
Dollars Donated: \$2,319,135.87
In-Kind Donations: \$2,866,498.68

Environment

Number of Projects: 5,239
Volunteer Hours: 282,876.65
Dollars Donated: \$467,386.94
In-Kind Donations: \$739,997.62

GFWC Juniors' Special Program

Number of Projects: 2,861
Volunteer Hours: 118,284.10
Dollars Donated: \$686,245.94
In-Kind Donations: \$791,396.48

Education and Libraries

Number of Projects: 7,118
Volunteer Hours: 530,468.35
Dollars Donated: \$3,589,786.27
In-Kind Donations: \$1,215,381.43

Health and Wellness

Number of Projects: 8,750
Volunteer Hours: 463,007.30
Dollars Donated: \$1,757,487.84
In-Kind Donations: \$1,622,009.57

Arts and Culture

Number of Projects: 6,615
Volunteer Hours: 310,569.75
Dollars Donated: \$848,000.33
In-Kind Donations: \$580,555.80

Epsilon Sigma Omicron

Volunteer Hours: 447,474.50
Books Read: 62,692.00

Advancement Programs

Number of Projects: 39,938
Volunteer Hours: 2,183,810.46
Dollars Spent: \$2,117,928.86

Totals

Number of Projects: 82,818.00, Volunteer Hours: 4,916,495.11, Dollars Donated: \$8,497,117.01
In-Kind Donations: \$8,653,784.86, Dollars Raised: \$8,427,047.60, Dollars Spent: \$2,097,928.86



Club Resources

2022-2024 Directory

Contact Lisa A. Harris at lisaharris@outlook.com for an electronic copy of our directory. For verification purposes you will need to provide your name and your club name in the requesting email. We are doing this to protect against identity theft of your contact information and photograph. Please do not share the information in this directory with anyone outside our organization.



2022-2024 Manual & Governance

Visit our website at https://www.gfwc-mfwc.org/GFWC_MFWC_Club_Resources.html to download a copy of our 2022-2024 manual and/or governance.



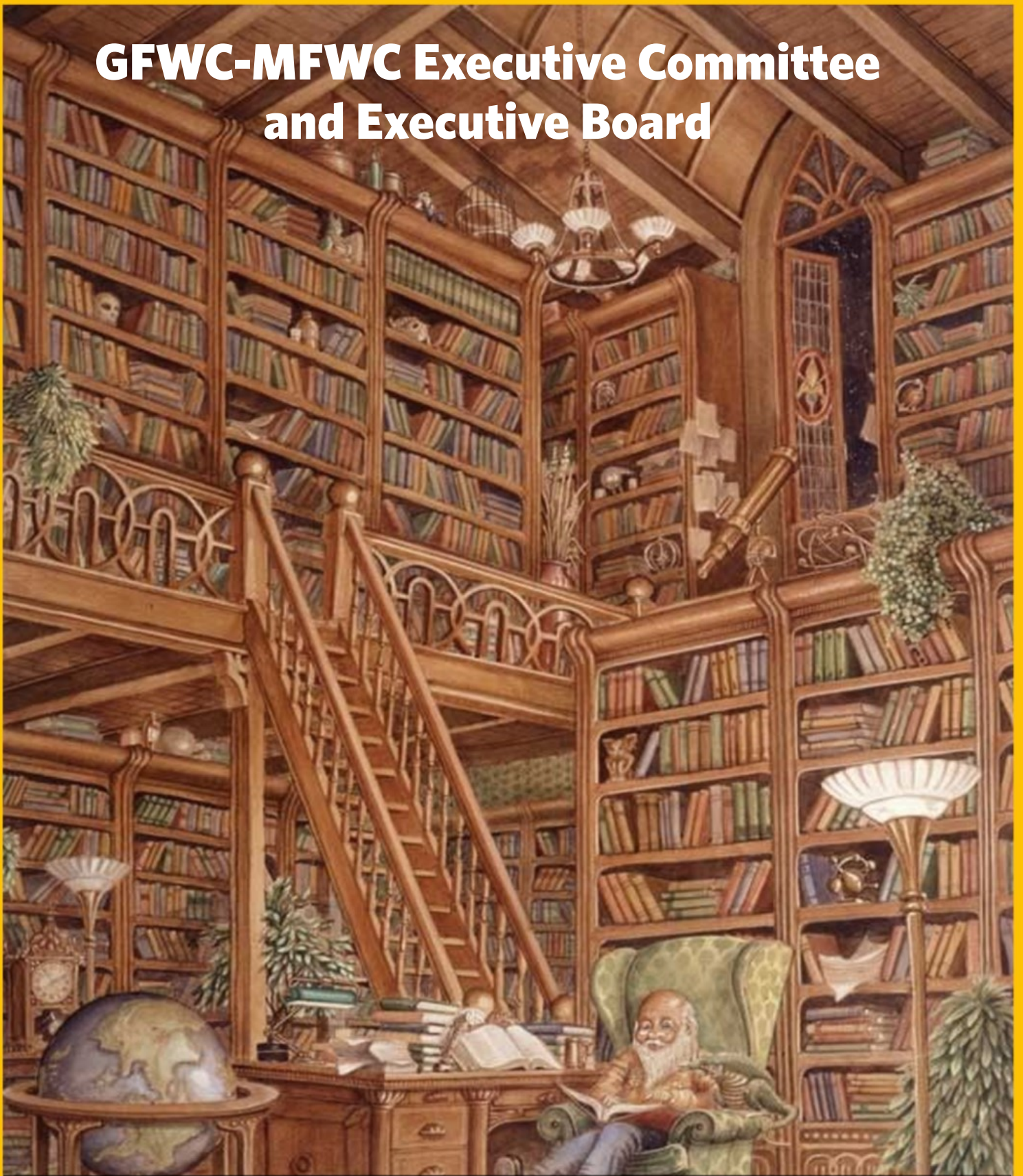
2022-2024 Logos

GFWC Logos - GFWC Emblem, Logo Files and 2022-2024 Administration Logo have been moved to the GFWC Member Portal. After logging in to the Portal, click on "My Digital Library" under the profile icon in the upper right corner and select the GFWC Resources folder.

MFWC Logos and MFWC President's Logos - for a high quality image file, contact Lisa A. Harris at lisaharris@outlook.com.



GFWC-MFWC Executive Committee and Executive Board



"A library is a good place to go when you feel unhappy, for there, in a book, you may find encouragement and comfort. A library is a good place to go when you feel bewildered or undecided, for there, in a book, you may have your question answered. Books are good company, in sad times and happy times, for books are people – people who have managed to stay alive by hiding between the covers of a book." – E. B. White

GFWC-MFWC 2022 - 2024 Directory

GFWC-MFWC

Executive Committee

- Theresa Buntyn, President, Central District, *Decatur Woman's Progressive Club

Elected Officers

- Dr. Carolyn S. Tedford, President-elect, Advisor to District Presidents and State Membership Chairman, Southern District, Poplarville Woman's Club
- Meri F. Newell, Vice President and Dean of Chairman, Southern District, Cosmopolitan Club
- Susan Shurden, Secretary, Northern District, GFWC Ackerman Twentieth Century Club
- Rebecca "Becky" W. Watkins, Treasurer, Central District, Quitman Woman's Club

GFWC-MFWC Executive Board

District Presidents

- Lisa McGee, District President, Northern District, *Twentieth Century Club of Bruce
- Theresa T. Berryhill, District President, Central District, *Raleigh Woman's Club
- Laura Ann Trigg, District President, Southern District, *Fine Arts Club of Bruce

Appointed Officers

- Sherri E. Reid, Immediate Past President, Southern District, Cosmopolitan Club
- Suzanne Byrd Poynor, Parliamentarian, Central District, *Florentine Evening Club
- Libby D. Everett, Historian, Southern District, Cosmopolitan Club
- Jackie Sue Etie, Chaplain, Central District, *District, Decatur Woman's Progressive Club
- Michelle Sutton, Juniorette Director, Northern District, Pontotoc Woman's Club
- Ashley Williams, Junior Club Advisor, Northern District, GFWC Ackerman Twentieth Century Club
- Lisa A. Harris, Media/Communications & Technology (MCT) Coordinator and Mississippi Clubwoman Editor and Circulation Editor, Central District, *Raleigh Woman's Club

Special Appointments

- Jeanette Thrash, President's Special Assistant, Central District, *District, Decatur Woman's Progressive Club
- Frances H. Brown, President's Special Assistant, Northern District, *Twentieth Century Club of Bruce
- Terrie Whitehurst, Meetings Coordinator, Central District, *Leading Ladies

- Meri F. Newell, MS LEADS Chairman, Southern District, Cosmopolitan Club
- Sue S. Freeman, MS Public Broadcasting Chairman, Central District, Crystal Springs Floral Club
- Becky C. Wright, MS Library Commission Member, Northern District, *Fine Arts Club of Bruce
- Theresa Buntyn, HOBY Board Member, Central District, *Decatur Woman's Progressive Club

President Special Project

- Terri Whitehurst, PSP Northern District Member, Central District, *Leading Ladies
- Pam Keith, PSP Central District Member, Central District, *Decatur Woman's Progressive Club
- Penny James Barr, PSP Southern District Members, Southern District, Cosmopolitan Club

Standing Committees CONSTITUTION AND BYLAWS

- Judy Thomas Martin, Committee Chairman, Central District, *Raleigh Woman's Club
- Sonya Smith, Committee Member, Central District, *Decatur Woman's Progressive Club
- Sherri E. Reid, Committee Member, Southern District, Cosmopolitan Club

- Committee Members, Ex-Officio
 - Theresa Buntyn, President
 - Suzanne Byrd Poynor, Parliamentarian

FINANCE

- Dr. Tammie M. McCoy, Committee Chairman, Northern District, Pontotoc Woman's Club
- Carolyn C. Huey, Committee Member, Central District, *Decatur Woman's Progressive Club
- Committee Members, Ex-Officio
 - Theresa Buntyn, President
 - Dr. Carolyn S. Tedford, President-elect
 - Meri F. Newell, Vice President
 - Susan Shurden, Secretary
 - Rebecca "Becky" W. Watkins, Treasurer

HEBRON MEMORIAL SCHOLARSHIP

- Lorri Stockstill, Committee Chairman, Southern District, *Civic Woman's Club of Picayune
- Betty Harpe, Committee Member, Central District, *Florentine Club
- Pamela R. Maxwell, Committee Member, Northern District, EPHFIC Women's Club of Cleveland

LONG-RANGE PLANNING

- Becky C. Wright, Committee Chairman, Northern District, *Fine Arts Club of Bruce

GFWC-MFWC 2022 - 2024 Directory

LONG-RANGE PLANNING

- Lisa McGee, Committee Member, Northern District, *Twentieth Century Club of Bruce
- Ada McGrevey, Committee Member, Central District, *Decatur Woman's Progressive Club
- Theresa T. Berryhill, Committee Member - District Executive Board Member, Central District, *Raleigh Woman's Club
- Renee Keith, Committee Member - Club President, Southern District, *Purvis Woman's Club
- Rebecca "Becky" W. Watkins, Committee Member - State Executive Board Member - Treasurer, Central District, Quitman Woman's Club
- Committee Members, Ex-Officio
 - Theresa Buntyn, President
 - Dr. Carolyn S. Tedford, President-elect

MEMBERSHIP

- Dr. Carolyn S. Tedford, Committee Chairman, Southern District, Poplarville Woman's Club
- Janae Winters, Committee Member, Northern District, *Fine Arts Club of Bruce
- Diane Rouse, Committee Member, Central District, *Florentine Evening Club
- Shirley Wiltshire, Committee Member, Southern District, Poplarville Woman's Club

RESOLUTIONS AND RECOMMENDATIONS

- Darlene C. Adams, Committee Chairman, Southern District, *Civic Woman's Club of Picayune
- Frances H. Brown, Committee Member, Northern District, *Twentieth Century Club of Bruce
- Melissa Carleton, Committee Member, Central District, *Decatur Woman's Progressive Club
- Committee Members, Ex-Officio
 - Theresa Buntyn, President

STATE INSTITUTIONS

- Diane Rouse, Committee Chairman, Central District, *Florentine Evening Club
- Dianne Smith, Committee Member, Central District, *Decatur Woman's Progressive Club
- Committee Members, Ex-Officio
 - Theresa Buntyn, President

WAYS AND MEANS

- Amy A. Jacobs, Committee Co-Chairman, Northern District, *Lanier Club
- Abby May, Committee Co-Chairman, Northern District, *Lanier Club

Special Committees 1935 SOCIETY & GAVEL CLUB

- Ivous Sisk, Committee Member, Past President 1986-1988, Central District, Gavel Club

- Jo Anne Reid, Committee Member, Past President 1998-2000, Central District, Gavel Club
- Tommye Rosenbaum, Committee Member, Past President 2000-2002, Central District, Gavel Club
- Celia C. Fisher, Committee Member, Past President 2002-2004, Central District, Gavel Club
- Deborah Dickens, Committee Member, Past President 2004-2006, Central District, Gavel Club
- Judy Thomas Martin, Committee Member, Past President 2006-2008, Central District, Gavel Club
- Carolyn C. Huey, Committee Member, Past President 2008-2010, Central District, Gavel Club
- Dr. Tammie M. McCoy, Committee Member, Past President 2010-2012, Central District, Gavel Club
- Suzanne Byrd Poynor, Committee Member, Past President 2012-2014, Central District, Gavel Club
- Darlene C. Adams, Committee Member, Past President 2014-2016, Central District, Gavel Club
- Tinker Forrester, Committee Member, Past President 2016-2018, Central District, Gavel Club
- Becky C. Wright, Committee Member, Past President 2018-2020,

Central District, Gavel Club

- Sherri E. Reid, Committee Member, Past President 2020-2022, Central District, Gavel Club
- Committee Members, Ex-Officio
 - Theresa Buntyn, President

MALONE-SISK EDUCATION/ LEADERSHIP ENDOWMENT FUND TRUST

- Ivous Sisk, Trustee - Chairman, Central District, *Gavel Club
- Dr. Tammie M. McCoy, Trustee - Finance Chairman, Northern District, Pontotoc Woman's Club
- Rebecca "Becky" W. Watkins, Trustee - Treasurer, Central District, Quitman Woman's Club
- Celia C. Fisher, Trustee, Northern District, *Lanier Club
- Committee Members, Ex-Officio
 - Theresa Buntyn, President

CHALLENGE GRANT

- Cherry Moon, Committee Chairman, Southern District, *Purvis Woman's Club
- Theresa Lynn Harris, Committee Member, Central District, *Raleigh Woman's Club
- Jo Anne Reid, Committee Member, Northern District, GF WC Ackerman Twentieth Century Club

* Indicates that GF WC-MFWC is part of the Club's Official name.

GFWC-MFWC 2022 - 2024 Directory

SARAH PEUGH "BUTTERFLY" SCHOLARSHIP

- Belinda Peacher, Committee Chairman, Central District, *Florentine Evening Club
- Becky Rhinehart, Committee Member, Southern District, *Fine Arts Club of Waynesboro
- Cassie Ferguson, Committee Member, Northern District, *Twentieth Century Club of Bruce

GFWC-MFWC Signature Programs

DOMESTIC & SEXUAL VIOLENCE AWARENESS AND PREVENTION

- Connie Johnston, Committee Chairman, Southern District, *Homochitto Heritage Club, Inc.

DOMESTIC & SEXUAL VIOLENCE AWARENESS AND PREVENTION

- Ashley Jarrell, Committee Co-Chairman, Southern District, Women's Club of Gulfport
- Jana Jarrell Owen, Committee Co-Chairman, Southern District, Women's Club of Gulfport

GFWC-MFWC Community Service Programs

ARTS & CULTURE

- Jody Brickson, Chairman, Southern District, Cosmopolitan Club

CIVIC ENGAGEMENT AND OUTREACH

- Shirley Wiltshire, Chairman, Southern District, Poplarville Woman's Club

EDUCATION AND LIBRARIES

- Lisa McGee, Chairman, Northern District, *Twentieth Century Club of Bruce

ESO

- Laura Ann Trigg, Chairman, Southern District, *Fine Arts Club of Waynesboro

HOBY CHAIRMAN

- Belinda Peacher, Chairman, Central District, *Florentine Evening Club

ENVIRONMENT

- Makayla Shelton, Chairman, Northern District, *Fine Arts Club of Bruce

HEALTH AND WELLNESS

- Patricia "Pat" B. Lee, Chairman, Southern District, *Purvis Woman's Club

GFWC-MFWC Advancement Plan Programs

COMMUNICATIONS AND PUBLIC RELATIONS

- Becky C. Wright, Chairman, Northern District, *Fine Arts Club of Bruce

LEADERSHIP

- Sherri E. Reid, Chairman, Southern District, Cosmopolitan Club

FUNDRAISING AND DEVELOPMENT

- Belinda Vowell, Chairman, Northern District, GFWC Ackerman Twentieth Century Club

LEGISLATION/PUBLIC POLICY

- Annajeral Knight, Chairman, Central District, *Star Woman's Club

WOMAN'S HISTORY AND RESOURCE CENTER (WHRC)

- Jeannie Pittman, Chairman, Central District, *Florentine Club

MEMBERSHIP

- Dr. Carolyn S. Tedford, Chairman, Southern District, Poplarville Woman's Club

GFWC Contest Appointments

COMMUNITY IMPACT PROGRAM

- Pollyanna Robelon, Chairman, Southern District, Women's Club of Gulfport

JENNIE AWARD

- Melba Watkins, Chairman, Central District, *Star Woman's Club

GFWC PHOTOGRAPHY CONTEST

- Linda Guraedy, Chairman, Central District, *Decatur Woman's Progressive Club

GFWC-MFWC Contest Appointments

GFWC-MFWC YOUTH ART & YOUTH CHALLENGE ART CONTESTS

- Eleanor J. Bayless, Co-Chairman, Southern District, *Homochitto Heritage Club, Inc.
- Dianne Roberts, Co-Chairman, Central District, *Florentine Club

GFWC-MFWC SCRAPBOOKS & YEARBOOK CONTEST

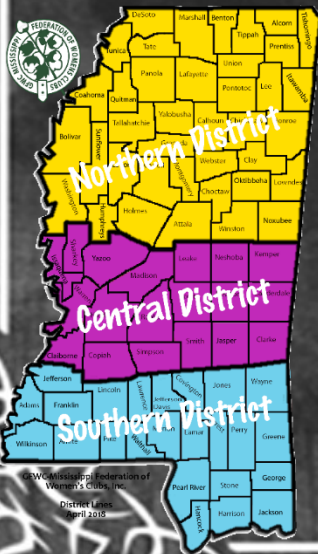
- Gail Mitchell, Chairman, Southern District, *Civic Woman's Club of Picayune

GFWC-MFWC Districts

EDUCATION

is the most
powerful
weapon which
you can use to
change
the world

- NELSON MANDELA -



GFWC-MFWC Federation of
Women's Clubs, Inc.
District Lines
April 2018

GFWC-MFWC 2022 - 2024 Northern Directory

Officers

- Lisa McGee, President, *Twentieth Century Club of Bruce
- Janae Winter, President-elect, *Fine Arts Club of Bruce
- Randi Baughman, Vice President, *Lanier Club
- Ashley Williams, Secretary, GFWC Ackerman Twentieth Century Club
- Pamela R. Maxwell, Treasurer, EPHFIC Women's Club of Cleveland

Chairman Appointments

- Becky C. Wright, Parliamentarian, *Fine Arts Club of Bruce
- Cassie Ferguson, Historian, *Twentieth Century Club of Bruce

- Frances H. Brown, Chaplain, *Twentieth Century Club of Bruce
- Carol Shoemaker, Photography Chairman, *Fine Arts Club of Bruce
- Sue Vance, Ways & Means, *Eupora New Century Club

General Clubs Presidents

- Julianne Bailey, EPHFIC Women's Club of Cleveland
- Belinda Vowell, GFWC Ackerman Twentieth Century Club
- Jackie Sergi, *Batesville Woman's Club
- Haley Murphy, *Eupora New Century Club
- Tammy Griffin, *Fine Arts Club of Bruce
- Brenda Whitfield, *Iuka Twentieth Century Club

- Susan Schultz, *Lanier Club
- Lisa White, *New Century Club of Calhoun City
- Chris Pasquale, *Twentieth Century Club of Bruce
- Lisa B. Lucius, Ph.D., Pontotoc Woman's Club
- Julie Taylor, Twenty-First Century Club of Kosciusko
- Woman's Club of Aberdeen, No contact information available
- Donna Wilkerson, Woman's Club of Booneville

Junior Clubs

- Katie Broadway, GFWC Magnolia Junior Woman's Club

Juniorette Clubs Advisors

- Leah Agnew, Ackerman Juniores
- Booneville High School Juniores, No Contact Information Available
- Emily Morris, Bruce Fine Arts Juniores
- Lauren Smith, Eupora Juniores
- Stephine Lee, Juniores of New Century Club
- Paige Royce, Pontotoc Juniore

GFWC-MFWC 2022 - 2024 Central Directory

Officers

- Theresa T. Berryhill, President, *Raleigh Woman's Club
- Diane Rouse, President-elect, *Florentine Evening Club
- Nixi Davis, Vice President, Crystal Springs Floral Club
- Rebecca "Becky" W. Watkins, Secretary, Quitman Woman's Club
- Lisa A. Harris, Treasurer, *Raleigh Woman's Club

Chairman Appointments

- Ada McGrevey, Parliamentarian, *Decatur Woman's Progressive Club

- Betty Harpe, Historian, *Florentine Club
- Melba Watkins, Chaplain, *Star Woman's Club
- Jeanne Pittman, MS Crafts Chairman, *Florentine Club
- Mary Edmond, Books Chairman, *Raleigh Woman's Club
- Annajeral Knight, Ways & Means Chairman, *Star Woman's Club

General Clubs Presidents

- Ann Lisk, Crystal Spring Floral Club
- Fortnightly Club of Meridian, No contact information available

- Pam Keith, *Decatur Woman Progressive Club
- Dianne Roberts, *Florentine Club
- Suzanne Byrd Poynor & Janet Berch, *Florentine Evening Club
- Suzanne Byrd Poynor, *Gavel Club
- Dr. Carolyn S. Tedford, *Leading Ladies
- Judy Thomas Martin, *Raleigh Woman's Club
- Annajeral Knight, *Star Woman's Club
- Nancy B. Moore, Present Day Club of Union
- Rebecca "Becky" W. Watkins, Quitman Woman's Club
- Rebecca Roberts, The Thursday Club (Walnut

Grove)

Juniorette Clubs Advisors

- GFWC-MFWC Florence Juniores, In-active this administration

* Indicates that GFWC-MFWC is part of the Club's Official name.

GFWC-MFWC 2022 - 2024 Southern Directory

Officers

- Laura Ann Trigg, President, *Present Day Club of Waynesboro
- Shirley Wiltshire, President-elect, Poplarville Woman's Club
- Connie Johnston, Vice President, *Homochitto Heritage Club
- LeeAnn Moon Miller, Secretary, *Purvis Woman's Club
- Jana Jarrell Owen, Treasurer, Women's Club of Gulfport

Chairman

Appointments

- Darlene C. Adams, Parliamentarian, *Civic Woman's Club of Picayune
- Cindy Holcomb, Historian, *Purvis Woman's Club
- Amy Pruitt, Chaplain, Fine Arts Club of Waynesboro
- Janis Sita, *Civic Woman's Club of Picayune & Lille Lofton, Fine Arts Club of Waynesboro, Arts/MS Crafts & Photography Co-Chairman
- Elanor J. Bayless, Books Chairman, *Homochitto Heritage Club, Inc.

- Pollyanna Robelen, Ways and Means Chairman, Women's Club of Gulfport

General Clubs Presidents

- Libby D. Everett, Cosmopolitan Club
- Blair Richardson, Ellisville Fidelity Club
- Debbie Blackwell, Fine Arts Club of Waynesboro
- Lorri Stockstill, *Civic Woman's Club of Picayune
- Connie Johnston, *Homochitto Heritage Club, Inc.
- Renee Keith, *Purvis Woman's Club
- Lucedale Fine Arts Club, No contact information available

- Dawn Vosbein, Poplarville Woman's Club
- Sandra Pelas, Women's Club of Gulfport

Juniorette Clubs Advisors

- Terri Mitchell & Bonnie Carpenter, Fidelity Juniores
- Connie Johnston, *Dixie Daisy Juniores
- Adrienne Pylant & Tiffany Terrell, *Les Amies Juniores
- Debbie Benoit & Darlene C. Adams, *Juniorette Diamonds



"Getting Back To Our GFWC Roots"


by promoting public libraries, education and literacy!

"Libraries store the energy that fuels the imagination. They open up windows to the world and inspire us to explore and achieve and contribute to improving our quality of life.

Libraries change lives for the better." — Sidney Sheldon

* Indicates that GFWC-MFWC is part of the Club's Official name.

GFWC-MFWC General Clubs and Juniorette Clubs by District



If every parent understood the huge education benefits and intense happiness brought about by reading aloud to their children, and if every parent and every adult caring for a child read aloud three stories a day to the children in their lives, we would probably wipe out illiteracy in one generation. – Mem Fox

GFWC-MFWC GENERAL CLUBS (AND THEIR OFFICIAL CLUB NAMES)

NORTHERN DISTRICT

Name of Club	Town	Organized	Federated
EPHFIC Women's Club of Cleveland	Cleveland		1958
GFWC Ackerman Twentieth Century Club	Ackerman		
GFWC Magnolia Junior Woman's Club	Bruce	2020	2020
GFWC-MFWC Batesville Woman's Club	Batesville	1937	1950
GFWC-MFWC Eupora New Century Club	Eupora		1946
GFWC-MFWC Fine Arts Club of Bruce	Bruce		1938
GFWC-MFWC Iuka Twentieth Century Club	Iuka	1935	1936
GFWC-MFWC Lanier Club	Okolona		
GFWC-MFWC New Century Club of Calhoun City	Calhoun City		1938
GFWC-MFWC Twentieth Century Club of Bruce	Bruce		1947
Pontotoc Woman's Club	Pontotoc	1938	1938
Twenty-first Century Club of Kosciusko	Kosciusko		
Woman's Club of Aberdeen	Aberdeen		
Woman's Club of Booneville	Booneville	1922	1922

CENTRAL DISTRICT

Name of Club	Town	Organized	Federated
Crystal Springs Floral Club	Crystal Springs		
Fortnightly Club of Meridian	Meridian		
GFWC-MFWC Decatur Woman's Progressive Club	Decatur	1928	1928
GFWC-MFWC Florentine Club	Florence		
GFWC-MFWC Florentine Evening Club	Florence		
GFWC-MFWC Gavel Club	Jackson		
GFWC-MFWC Leading Ladies	Jackson	2019	2019
GFWC-MFWC Raleigh Woman's Club	Raleigh	1931	1931
GFWC-MFWC Star Woman's Club	Star	2008	2008
Present Day Club of Union	Union	1927	1927
Quitman Woman's Club	Quitman	1926	1926
Thursday Club of Walnut Grove	Walnut Grove	1947	1948

SOUTHERN DISTRICT

Name of Club	Town	Organized	Federated
Cosmopolitan Club	Petal	1933	1933
Ellisville Fidelia Club	Ellisville	1948	1949
Fine Arts Club of Waynesboro	Waynesboro		1933
GFWC-MFWC Civic Woman's Club of Picayune	Picayune		1959
GFWC-MFWC Homochitto Heritage Club, Inc.	Meadville		
GFWC-MFWC Purvis Woman's Club	Purvis	1928	1928
Lucedale Fine Arts Club	Lucedale		1942
Poplarville Woman's Club	Poplarville		1942
Women's Club of Gulfport	Gulfport	1915	1915

GFWC-MFWC JUNIORETTE CLUBS (AND THEIR OFFICIAL CLUB NAMES)

NORTHERN DISTRICT

Name of Club	Town	Founded By General Club
Ackerman Juniorette	Ackerman	GFWC Ackerman Twentieth Century Club
Booneville High School Juniorette	Booneville	Woman's Club of Booneville
Bruce Fine Arts Juniorette	Bruce	GFWC-MFWC Fine Arts Club of Bruce
Eupora Juniorette	Eupora	GFWC-MFWC Eupora New Century Club
Juniorettes of New Century Club	Calhoun City	GFWC-MFWC New Century Club of Calhoun City
Pontotoc Juniorette Club	Pontotoc	Pontotoc Woman's Club

SOUTHERN DISTRICT

Name of Club	Town	Founded By General Club
Fidelia Juniorettes	Ellisville	Ellisville Fidelia Club
GFWC-MFWC Dixie Daisy Juniorettes	Meadville	GFWC-MFWC Homochitto Heritage Club, Inc.
GFWC-MFWC Juniorette Diamond	Picayune	GFWC-MFWC Civic Woman's Club of Picayune
GFWC-MFWC Les Amies Juniorettes	Purvis	GFWC-MFWC Purvis Woman's Club

State and District Dues

GFWC-Mississippi Federation of Women's Clubs, Inc

Theresa Buntyn, 2022-2024 President



Date: Sunday, December 18, 2022

To: GFWC-MFWC Club Presidents and Juniorette Advisors

FROM: GFWC-MFWC Treasurer Becky W. Watkins

CC: GFWC-MFWC President Theresa Buntyn

As a friendly reminder, your **MFWC Dues** must be **postmarked** by **January 1, 2023** to be eligible to have reports judged or to receive awards at State Convention.

Please note that all checks for **State Dues** should be made payable to GFWC-MFWC. A copy of the GFWC-MFWC Dues form can be found on our website by following this link: https://www.gfwc-mfwc.org/pdf/GFWC_MFWC_Forms/2022_2024/2022-2024_GFWC_MFWC_Dues_Form_V2.pdf. Please do not staple your check and roster to the Dues Form. Mail your club's check and the GFWC-MFWC Dues Form with one copy of your club roster with members names, mailing addresses, emails addresses and phone numbers to GFWC-MFWC Treasurer Becky W. Watkins at

Becky W. Watkins
GFWC-MFWC Treasurer
P. O. Box 740
Quitman, MS 39355

District Dues should be sent to your District Treasurer. Dues are \$1.00 per club member. Please include a copy of your club roster with your club dues. Please do not send your District Dues to Becky W. Watkins. Listed below is the contact information for District Treasurers.

Northern District
Pamela R. Maxwell

Central District
Lisa A. Harris

Southern District
Jana Jarrell Owen

Becky W. Watkins
GFWC-MFWC Treasurer
GFWC-Mississippi Federation of Women's Clubs, Inc.
P. O. Box 749 / Quitman, MS 39355
C/T: 601.938.5247 /E: beckywatkins@bellsouth.net

**“Bloom Where You Are Planted, Getting Back To Our GFWC Roots
by promoting public libraries, education, and literacy!”**

Lisa A. Harris
Media/Communications and Technology Coordinator &
Mississippi Clubwoman Magazine Editor & Circulation Editor
GFWC-Mississippi Federation of Women's Clubs, Inc.
822 SCR 115 S / Raleigh, Mississippi 39153
C/T: 601.940.1519 /E: lisaharris@outlook.com



Visit our website



“Like” us on facebook



“Follow” us on Twitter

This message is from the GFWC-Mississippi Federation of Women's Clubs, Inc. (MFWC). To be removed from or added to the GFWC-MFWC distribution list, send your request to Lisa A. Harris



GFWC-Mississippi Federation of Women's Clubs, Inc.



2022-2024 Dues Form

Club Information:

Club Name: _____ District: _____
 Club President: _____ Phone Number: _____
 Address: _____ Email: _____
 Club Treasurer: _____ Phone Number: _____
 Address: _____ Email: _____

Club Dues: \$30 x number of general members _____ listed on roster \$ _____
 \$25 x number of juniorettes _____ listed on roster \$ _____
(No District dues, please. District dues should be sent to the District Treasurer)

Contributions:

- GFWC-MFWC President's Special Project: "Getting Back To Our Roots" \$ _____
- Hebron Memorial Scholarship Fund (\$1,000 annual scholarship) \$ _____
- Sarah Peugh Butterfly Scholarship Fund (\$1,000 annual Juniette Scholarship) \$ _____
- Challenge Grant (for a Special Education Teacher) \$ _____
- State Institutions: MS School for the Blind \$ _____ MS School for the Deaf \$ _____ .. \$ _____
- Name of State Institute sponsored by club:** _____ \$ _____
- Mississippi Public Broadcasting \$ _____
- Youth Art: **\$10 per club suggested minimum** \$ _____
- HOBY: \$200.00 per sponsored student or other donation (**\$20 minimum suggested**) \$ _____
- Name of school sponsored by club:** _____
- Malone-Sisk (MS LEADS) Program \$ _____
- "Dollars for Delegates" for officers' expenses to attend GFWC meetings \$ _____
- Donation to Success for Survivors Scholarship which is a part of the GFWC Signature Program:
 Domestic and Sexual Violence Awareness and Prevention. \$ _____
- Other Contributions not listed: _____ \$ _____
- _____ \$ _____
- _____ \$ _____

(Additional pages may be attached, if necessary)

Total Of All Above: \$ _____

Instructions:

- Please mail this form along with your club's check made payable to MFWC and one copy of club roster with names, mailing addresses, email addresses & phone numbers postmarked by **November 1** to receive Honor Club Status to:
 Becky W. Watkins, GFWC-MFWC Treasurer, Quitman, MS 39355, C/T: (601) 938-5247,
 E: beckywatkins@bellsouth.net
- ALL checks MUST be made payable to MFWC. Please do not staple check to the form.
- Dues must be postmarked by **January 1** in order for a club to be eligible to have reports judged or to receive awards.
- For members added during the club year, please send name, address, email address & dues to Becky W. Watkins, GFWC-MFWC Treasurer.
- Send **deletions only** to Lisa A. Harris, *Mississippi Clubwoman* Circulation Editor at lisaharris@outlook.com or 822 SCR 115 South, Raleigh, MS 39153



General Federation of Women's Club



1734 N Street, NW
Washington, DC 20036-2990

Phone:
202-347-3168

For membership information:
800-443-GFWC
www.gfwc.org

THE POWER OF YOU:

A GFWC ADVOCACY TRAINING SERIES

POWER UP: ELEMENTS OF ADVOCACY

THURSDAY, JANUARY 19
7:00 PM

POWER UP: LAC IS FOR ME

LEGISLATIVE ACTION CENTER TUTORIAL
THURSDAY, JANUARY 26
7:00 PM

POWER UP: LEGISLATION AND LEADERSHIP

PAST SUCCESSES AND CURRENT PRIORITIES
THURSDAY, FEBRUARY 2
7:00 PM

POWER UP: PARTNERS TOWARD PROGRESS

(PARTS 1, 2, 3)
GFWC AFFILIATE ORGANIZATION ADVOCACY
THURSDAY, FEBRUARY 9, 16, 23
7:00 PM

REGISTER NOW



The Season of Giving

By Tric Heepe, Member of GFWC Annual Giving Committee



The *Season of Giving*, second quarter of the Annual Giving Program, comes to an end on **December 31**. This quarter, the first 100 donating \$100 or more will receive a plantable GFWC emblem ornament. If you have not made your 2022 donation to GFWC, it is not too late. When you mail your Christmas cards, address one envelope to *1734 N Street NW, Washington DC 20036*, and include your check with the [Annual Giving Donation Form](#). Remember, GFWC is a 501(c)(3) nonprofit organization, and the season of giving is upon us.

This is the season where we count our blessings and begin to focus on 2023. As I look at holiday card lists, I am amazed at all my valued friends from across the country and realize that without GFWC, I

would not know many of them. I am thankful for the opportunities GFWC has given me, and I look forward to meeting more GFWC sisters in 2023. I did not just meet new people when I joined my local GFWC club; I met lifelong friends. There are no bounds to the reach of this wonderful organization. My appreciation for the organization that drives me to continue financial support to ensure that it will be here for my granddaughter.

The Annual Giving Program Committee wishes all of you good health and prosperity in whatever way you celebrate this *Season of Giving*.

Holiday Season and Your Health

By Dale Fisher, 2022-2024 Health and Wellness Program Chairman

Happy Holidays! We are all familiar with the usual health and wellness resolutions of eating a healthier diet, exercising more, quitting smoking, and reducing the intake of alcohol. These are all great. However, we often find that our goals are too restrictive or unsustainable, thus resulting in failure and discouragement. You're more likely to succeed if you set goals that fit your lifestyle.

For example, be specific – I am going to lose 10 pounds, and I will devote 30 minutes, four days a week to a physical activity. Celebrate your milestones and accept that you'll encounter a setback. You do not need to be perfect. The occasional salty snack or piece of chocolate can help you to stay on track with your goals.



Add to your resolutions – learn something new, find a new hobby, take care of your teeth, schedule an annual checkup, reduce stress, get more sleep, and take time for yourself. Check out [Making New Year's resolutions that stick](#), an article posted on the Mayo Clinic's website.

Consider making some Health and Wellness New Year's Resolutions for your club. Allow time for a two-minute physical fitness activity at each monthly club meeting. Publish an article in each club newsletter focusing on a healthy lifestyle topic. Develop and execute a Health and Wellness Community Connection Initiative project. Have a club program focusing on nutrition, disease prevention, or physical and emotional care. Educate members on the GFWC Affiliates that focus on health areas and lend support – utilizing the GFWC Legislation and Public Policy resources, advocate for Health and Wellness issues.

Resolve to assess the health of your club and use materials available in the [GFWC Member Portal](#) to attain your goals.

Remember, *your good health is your true wealth*.

2023 Annual Convention, June 10-12, Update

GFWC members are welcome to book hotel and flight reservations now!

The official event hotel is the [Louisville Marriott Downtown](#) in Kentucky. You can book your room [here](#). If you prefer to call to make your reservations, please do so at the following dedicated group phone numbers: 800-266-9432 or 502-627-5045 (local).

In addition, GFWC has partnered with United Airlines for air travel. To make flight reservations online, please click on discount code [ZMWZ353876](#). MileagePlus members earn miles for their travel when using the Meetings discount code.

You also can call United Meetings Reservation Desk Monday through Friday at 800-426-1122 for booking assistance. Booking fees are waived for Meeting reservations. International customers may contact their local United Reservation Desk.

GFWC Member Portal FAQs and How-To Videos

Clubwomen have access to a wealth of information, resources, GFWC merchandise, and fun and informative events through the [GFWC Member Portal](#). Whether you are wondering how to sign up for an account of your own, register for events, purchase items from Marketplace, or want to learn more about GFWC Community Service Programs in the Club Manual, you can find answers to these questions and more by checking out the [Member Portal FAQs](#) page.

This useful tool, which is published within the GFWC Resources section of www.GFWC.org, includes sections on general GFWC Member Portal inquiries, navigating the Digital Library, registering for GFWC events, placing orders with Marketplace, making donations, and more.

The step-by-step answers will help guide you through many common questions and concerns regarding the GFWC Member Portal, from resetting your account password to accessing GFWC logos, emblems, and icons. Along with these instructions, GFWC has created helpful how-to videos you can watch on [YouTube](#) for additional assistance.

If you can't find the answer you are looking for in the Member Portal FAQs, please don't hesitate to email GFWC@GFWC.org, and someone will assist you with your inquiry.



Save the date and stay tuned for details. Registration opens in the early Spring!

GFWC

Ideas, Information, Insight, and Inspiration

Clubwoman

WINTER 2023 | Volume 101 | Issue 1

Magazine

Sharing Our Holiday Traditions

See page 6


www.GFWC.org
**GENERAL FEDERATION
of WOMEN'S CLUBS**


GFWC *Clubwoman Magazine* is the premier publication of the General Federation of Women's Clubs, and one of the most useful and beneficial communication tools we have to inform and educate our Federation about community service opportunities, project ideas, and ways to enhance club operations. Published quarterly, the magazine is a source for insightful and informative content that keeps our members in tune with all things GFWC. The magazine is released early March, June, September, and December, and all electronic issues are archived in the GFWC Member Portal, Resources, C, Clubwoman Magazine.