

Mississippi



Clubwoman

Volume LXVIII, Number 4

Spring 2016

CALL TO CONVENTION

118th STATE CONVENTION
April 28–30, 2016
Delta State University
Cleveland, Mississippi
“Bringing Hope – Changing Lives”



GFWC Mission Statement

"The General Federation of Women's Clubs is an international organization dedicated to community improvement through volunteer service and to providing opportunities that strengthen the role of women."

MFWC Mission Statement

"The Mississippi Federation of Women's Clubs, Inc., is an organization of women whose goal is personal enrichment leading to volunteer service that benefits the community, state, nation, and world."

CONTENTS

Message from GFWC-MFWC President.....	3
2016-2018 Candidate Bios.....	6
Officer Messages.....	8
District Presidents Messages.....	9
GFWC Community Service Programs.....	12
GFWC Advancement.....	14
GFWC Contests.....	15
Call to MFWC Convention.....	17
Proposed Amendments to the GFWC-MFWC Constitution and Bylaws.....	20
MFWC Convention Ad Form.....	23
MFWC Clubs in Action Photos.....	24
Southern Region Photos.....	29
GFWC Orientation Photos.....	30
Winter Board Meeting/Judging Day Photos.....	31
Future Clubwomen and Boosters Photos.....	32

IMPORTANT DATES

April 28-30	2016 GFWC-MFWC State Convention Delta State University Cleveland, Mississippi
June 25-29	2016 GFWC International Convention Baltimore, Maryland
October 21-23	Southern Region Conference Jacksonville, Florida

- ❖ Please send **ALL ADDITIONS (with DUES)** to your Club Roster directly to the **State Treasurer**, Diane Rouse, 2323 Tiffany Circle, Florence, MS 39073. She will, in turn, forward to the **Circulation Editor**, Lisa A. Harris.
- ❖ Please send **ALL DELETIONS AND CHANGES** to your Club Roster directly to the **Circulation Editor**, Lisa A. Harris.
- ❖ Requests for additional magazines (if available) should be addressed to the **Editor**, June Vaughn.

If you wish to keep current or be updated on GFWC-MFWC events and news, please "like" our facebook page at www.facebook.com/Mississippi-Federation-of-Womens-Clubs-Inc

Mississippi Clubwoman

Volume LXVIII, No. 4, Spring Issue

Editor: **June Vaughn**
89 CR 257
Bruce, MS 38915
662-983-4019 – h
662-983-8399 – c
junevaughn@brucetelephone.com

Assistant Editor: **Jeanette Thrash**
P.O. Box 906
Decatur, MS 39327
601-635-2699 – h
601-479-3101 – c
jbthrash39@gmail.com

**Circulation Editor/Website Chair/
Handbook Editor/Newsletter Editor:**
Lisa A. Harris
822 SCR 115 South
Raleigh, MS 39153
601-940-1519 – c
laharris@hughes.net

GFWC-MFWC State President:
Darlene C. Adams
3004 The Woods Road
Picayune, MS 39466
601-799-0157 – h
601-590-0251 – c
darleneadams@bellsouth.net

Website: **www.gfwc-mfwc.org**

Official Publication:
Mississippi Clubwoman

State Headquarters:
2407 North State Street
Jackson, MS
(Physical address only-not a mailing address)

2016 Fall Plans Issue Article Deadline:
To Be Announced at 2016
Post-Convention Board Meeting

**Message from 2014-2016
GFWC-MFWC President Darlene Adams**

Dear Federation Friends;

I want to invite you to our 118th GFWC-Mississippi Federation of Women's Clubs Annual Convention. The District IV host clubs want to make your experience in Cleveland an enjoyable one. Cleveland, "a hip little town in the Mississippi Delta," was named Smithsonian Magazine's #2 Small Town in 2013. We will have a group tour to the brand new "Grammy Museum Mississippi" on Thursday, April 28. This is the only Grammy museum outside of Los Angeles. If you arrive early Thursday, visit the Historic Crosstie Shopping District for shopping and lunch, or you can head over to Merigold, MS and visit McCarty's Pottery. You will want to come early and stay all weekend.

We are thrilled to have GFWC Director of Junior Clubs, Cathy Jo Bryant attend this convention. It's been too long since Mississippi has had a GFWC officer able to attend our state convention. Cathy Jo epitomizes the future of GFWC and will share with you how to encourage and retain junior members in your general club. We are also delighted Cathy Jo will install the incoming 2016-2018 administration at the Friday banquet.

If you enjoyed the workshop at last year's state convention presented by GFWC Chief Operating Officer, Rosemary Thomas, well ladies – she's back! Get ready for another exciting workshop that will have you motivated and inspired to lead your clubs when you return. This will be following the Friday afternoon Business Session.

Saturday morning will be our Prayer Breakfast with Jennifer Crawford Walker, native of Batesville and married to Minister James Walker of First Baptist Church Cleveland. Jennifer is the host of a local weekly Christian talk show "Smelling Coffee TV." Jennifer is all about "encouraging women to love Jesus passionately, walk with him intimately, and trust in him completely." We hope to have a few "familiar" faces as well during the breakfast for your entertainment.

We will host GFWC's 125th Anniversary Celebration Part II. You will not want to miss

what we have in store as we celebrate the history of GFWC. We may even have some surprise guests to enhance your convention experience throughout the convention.

Another convention highlight will be when we present the final check to the American Cancer Society, our President's Special Project. There is still time to contribute to add more zeros to that check. Through your support, the Hope Lodge will become a reality for cancer patients and their families.

I hope this has encouraged you to make the trip to the Mississippi Delta for this convention. This convention is for every club woman to come together for a common cause and celebrate the spirit of volunteering as we continue "Bringing Hope – Changing Lives" to our community, state, nation, and world.

As I close my final magazine article as your state president, I am reminded of the scripture, "As a face is reflected in water, so a person is reflected by his heart." (Proverbs 27:19) I hope you have seen my heart this past administration year and it was pleasing to your soul. I know I have seen yours every time I read one of your reports, see your volunteer in action pictures and have the opportunity to see you at your club meetings, district conventions and at the state conventions. Thank you for the love, support and memories of this administration. I will join other state presidents from 2014-2016 in our new GFWC Club – Babs' Inspirations. She says we have inspired her, but that's because ladies, you have inspired me. I am better to have known you.

Hope to see YOU in Cleveland!

In federation love,
Darlene

*Volunteers don't necessarily have the
time; they just have the heart!*

Administration Accomplishments 2014-2016

- Our biggest accomplishment was to retain our beautiful Headquarters Lease for 15 years with another 15-year option and meet with Governor Bryant for the Ceremonial Signing of the Bill.
- Chartered a new Juniorette Club with 26 chartered members.
- Created the Fund Development Committee to raise funds and also look for other sources to help support the operating budget.
- Corrected the use of the GFWC-MS Federation of Women's Clubs' emblem to match the cornerstone marker on the Headquarters.
- Created the 2014-2016 GFWC-MFWC Directory with photos of board members for more familiarity at meetings, and also set up the Directory with titles/positions in accordance with the MFWC Constitution & Bylaws.
- Put the entire 2014-2016 GFWC-MFWC Manual, Directory and Constitution & Bylaws and Standing Rules on jump drives for members.
- Started the "GFWC-MFWC Officer Manual" to be passed on and continue to be updated each administration moving forward for every incoming officer.
- Visited most of the clubs within the two years of the administration. Have four more first-time visits in May to install their officers.
- Held a "District Presidents Workshop."
- Implemented workshops at State Convention and increased the number of workshops at Summer Institute.
- Made recommendations to the Constitution and Bylaws according to current practices and bringing to vote at State Convention 2016.
- So far have kept all conventions and meetings self sustained due to streamlining expenses, and therefore, was able to deposit overage from both to the operating budget for other needs (*2016 State Convention not held yet*).
- Reinstated the use of our banner at state conventions by ordering a GFWC banner, customized with the MFWC emblem. Also, using this banner at the Headquarters' fence for special occasions.
- Held MFWC's first daylong LEADS Workshop – the first year at state convention, second year's objective attained holding prior to Convention in February.
- Considering wisely members' time, combined all Board Meetings for both years with Judging Day and Summer Institute.
- Started the first Webinars to train leaders in local clubs (*ready for viewing in May 2016*).
- Created the first "President's Cup" Awards for outstanding participation in attendance and reporting by club size category."

"Alone we can do so little; together we can do so much." ~ Helen Keller



Shelia "Tinker" Forrester
2016-2018
GFWC-MFWC President

Shelia "Tinker" Forrester will be installed as the fifty-ninth president of the GFWC-Mississippi Federation of Women's Clubs, Inc., at the one hundred eighteenth annual State Convention.

Tinker Forrester has been a member of MFWC since 1993. She began her service on the MFWC Board in 1998 when Jo Anne Reid asked her to be the editor of the Mississippi Clubwoman during her administration as MFWC President. Tinker continued to serve in this position for 5 more administrations. She has also served as District 2 President-elect & President, as well as Crafts Chairman for many years.

Even though she is serving MFWC as an Executive Officer, she remains very active in the GFWC Ackerman 20th Century Club, holding the position of Treasurer – among MANY other things.

Tinker resides in her hometown of Ackerman with her husband of 23 years, Larry, their furry friend – Muffin and their grandpuppy 'Blu'. Their oldest daughter Ginny teaches 6th grade at Ackerman Elementary, has been married to Brian for 14 years and they have one child, Raynee Claire who is 8. She is also the current President of the Ackerman club. Their daughter Chelsea works with Larry's business – Forrester & Associates, LLC, an environmental contracting company; is married to Trenton Lane and they have four children – Rylee – 15, Kamren – 13, Adelynn – 8 and TJ – 7. Larry and Tinker's son, Clayton, graduated from Winston Academy where he played football and is now a sophomore at Mississippi State University pursuing a degree in Business Management and Marketing as he intends to relieve his father of the day-to-day operations of his business in the future. This past fall, he pledged and has been initiated into the Sigma Alpha Epsilon fraternity.

Tinker has received college credit from Wood Community College; the University of Mississippi and Delta State University. Her

work history is as varied as her talents – from hospitals, doctor and dentist offices, the Social Security Administration, U. S. Postal Service, Farmers Home Administration, wholesale furniture buyer, office manager for a timber company (where she met Larry) and for a narcotics task force and lastly, as the administrative assistant for Larry's company. Oh yes, she even – at one time – had her barber's license!

As you can see, there isn't much that Tinker hasn't done which should put the membership of MFWC at ease knowing that our Federation will continue to be in very capable hands.

**You are invited to a Reception
honoring**

Tinker Forrester

2016-2018
GFWC-MFWC President

and

Cathy Jo Bryant

2014-2016
GFWC Director of Junior Clubs

**immediately following the
Friday night Banquet and
Installation of Officers
at State Convention**

**Hosted by GFWC-MFWC
Ackerman Twentieth Century Club**

2016–2018 Candidate Bios

Becky Wright **Candidate for** **GFWC-MFWC President-elect**



The GFWC-MFWC Fine Arts Club of Bruce enthusiastically endorses outstanding club and community leader Becky Wright for the office of GFWC-MFWC President-elect. An active member of her local club since 1995, she has served in most all offices and chairmanships. As 2002-2004 President, she led the club in earning recognition for the first time in its history as MFWC Club of the Year. Notably, she served as the club's chairman of the MFWC President's Special Projects for four consecutive administrations 2006-2014, leading the club to donate large sums to these projects.

Becky was chosen as her club's first LEADS Candidate in 2003 to attend MFWC's first LEADS Seminar and represented MFWC as its LEADS Delegate to the 2003 GFWC International Convention. A member of the MFWC Board since 2003, she has served as Leadership Chairman, Newsletter Contest Chairman, Assistant Editor of Mississippi Clubwoman Magazine, a member of the Challenge Grant Scholarship Committee and currently as GFWC-MFWC Vice President. Additionally, she completed a successful term as

District III President 2006-2008 having served as Vice President and President-elect.

Her extensive community service has included four terms as Bruce Chamber of Commerce President, Bruce March of Dimes Walk-America Chair, Bruce Elementary School Team (BEST) Chair, and the town's Sawmill Festival Chair. Her unsurpassed community volunteerism has garnered her many awards including Chamber Member of the Year, Volunteer of the Year, Parent of the Year, and Who's Who Among Young American Women.

Becky and her husband James have two sons, two daughters, three granddaughters, two grandsons, and a foster grandson. She and James are co-owners/operators of Piggly Wiggly Grocery Store in Bruce since 1994. An active member of Bruce United Methodist Church, she serves as Chairman of the Children's Ministry and the Worship Committee and on the Board of Trustees. Becky enjoys camping with her family, playing Scrabble, reading classics and Mississippi authors, spectator sports, traveling, and learning about different cultures through food and cooking.

Noting her proven leadership and her commitment to federation as well as her volunteer spirit, GFWC-MFWC Fine Arts Club of Bruce proudly supports Becky Wright for the office of Vice President.



Sherri Reid **Candidate for** **GFWC-MFWC Vice President**



It is with great pride that Cosmopolitan Club of Petal supports the nomination of Sherri Reid for the office of Vice-President for the Mississippi Federation of Women's Clubs. Our club has a long history (73 years) of serving at the district and state level. Sherri Reid follows that long tradition with her commitment to service.

She has been an energetic supporter of club activities and an interested recipient of knowledge from MFWC and GFWC. Soon after becoming a Cosmopolitan Club member in 2004, she served on the local board as Club Historian and Club Reporter. In 2005 and 2006, her second and third year as a club member, she chaired the Relay for Life project that raised over \$5,000.00 for the American Cancer Society just from our club. In 2007 and 2008, she chaired the Holiday Tasting Tea, our largest fund-raiser, which raises over \$1,000.00 for club projects. She has also been selected as Clubwoman of the Year for our club. She has served our club as Public Issues PSP chairman (more than once), vice-president, president-elect, and president.

She has attended every district and state convention since becoming a member. She has also attended GFWC conventions. On the district level, she has served as secretary, vice-president, president-elect, and is currently serving as president of District 1. For MFWC, she has been a LEADS candidate, International Outreach PSP chairman for two state presidents, and corresponding secretary.

In each of these positions, she has shown herself to be organized, responsible, and enthusiastic. We believe she is an excellent candidate for MFWC Vice-President and shows all the characteristics of someone who would be committed to serving in a leadership role for our organization in the years to come.

Sherri and her husband, Lance, have two sons, Blake, a senior at Petal High School and Carlton, a junior at William Carey University. Lance is the Chief Deputy of the Chancery Court and Sherri works with Dr. Chuck Harrell, a local dentist. They are active members of Asbury United Methodist Church. Sherri loves USM sports, community involvement, reading, and is an avid lover of antiques, with an extensive Fostoria collection.

Theresa Buntyn
Candidate for
GFWC-MFWC Recording Secretary



The GFWC-MFWC Decatur Woman's Progressive Club takes great pleasure in recommending Theresa Buntyn for the office of GFWC-MFWC Recording Secretary for the 2016-2018 administration. Theresa has been an active member of Decatur Woman's Progressive Club since 1989. She has served her club as Reporter, Parliamentarian, Recording Secretary, Vice President, and President. She currently chairs two committees and participates in all activities and projects. Her enthusiasm and willingness to undertake any assigned task and to follow it to completion are immeasurable assets to her club.

Theresa is currently serving as 2014-2016 District II President. Her prior experiences and administrative roles in Home Health Care and Club President have prepared her to successfully guide its membership for the last two years.

She is currently serving on the GFWC-MFWC Executive Board as a member of the Long-Range Planning Committee and as Chairman of International Outreach Partnership Program. Other previous Board positions have included Home Life Chairman for four years with her reports receiving international awards at annual GFWC conventions.

Nominated by her club as a 2012 GFWC-MFWC LEADS Participant, she was selected as the 2012 MFWC LEADS delegate to represent MFWC at the LEADS Workshop at the 2012 GFWC Convention. Chosen by her club as 2013 Clubwoman of the Year, Theresa was named 2013 GFWC-MFWC Clubwoman of the Year.

Currently the Director for Sta Home Health & Hospice, she holds a BSN in Nursing from University Medical Center and advanced certifications in gerontology. She is the recipient of the Sta Home Agency Joyce P. Carraci Award for Excellence in Nursing.

Married for 34 years, she and her husband Mark have two special sons, Eric and Wesley. She and her family make their home in Decatur, MS. Theresa is a Member of the Greater Decatur Chamber of Commerce and was chosen "Citizen of the Year" in 2013.

Theresa enjoys walking, traveling, photography, antique shopping, and lining up the Christmas Parade each year. Her motto is "Bloom Where You Are Planted." No matter where God places us on our journey in life, we are always to serve and do our best.



Diane Rouse
Candidate for
GFWC-MFWC Treasurer



The GFWC-MFWC Florentine Evening Club of Florence wholeheartedly recommends Diane Rouse for the office of GFWC-MFWC Treasurer. Diane has been a member of the GFWC-MFWC Florentine Evening Club since 2002. Since joining, she has served as Club President, Corresponding and Recording Secretary, Reporting Chairman and Chairman of various committees. Diane is currently serving as MFWC Treasurer in the 2014-16 administration, as well as previously in the 2012-14 administration. Diane has served on the MFWC Board since 2006 having served as MFWC Meetings Coordinator and MFWC Ways & Means Chairman. In 2011, she was selected as the Mississippi LEADS Representative to attend the GFWC International Convention in Milwaukee, Wisconsin.

A Rankin County native, Diane is a graduate of Brandon Academy and holds a degree in Interior Design and Marketing from Stratford Women's College in Atlanta, but pursued a number of other career choices through the years, as well – Church Treasurer, Budget Analyst at the Mississippi Department of Education and most recently prior to leaving state government, Personnel Director at the Schools for Deaf and Blind. Since 2005, Diane has enjoyed working as a freelance designer, partner in a catering business, marketing director of a food service management company and owner/partner of "Judith Anne's" children's designs.

Diane enjoys spending time with her husband, Clay, traveling, reading, gardening, decorating, shopping, serving in her church wherever needed, and volunteering in her community. Diane has two grown sons, Jeremy and Justin, one grandson, Brody and one granddaughter, Paislee. Recognizing her strong commitment to GFWC and MFWC and her drive for excellence, the GFWC-MFWC Florentine Evening Club of Florence proudly endorses Diane Rouse for the office of GFWC-MFWC Treasurer.



**GFWC-MFWC President-elect
Tinker Forrester**

I had no idea - a little over two years ago - when I agreed to serve as the GFWC-MFWC President-elect that time was going to pass so quickly! I feel as though I should change my name to Dorothy and my little friend Muffin's name should be Toto and we have just been set down in Kansas! This realization hit me right between the eyes as I was getting my thoughts together for the things that I will be saying at the upcoming District Conventions.

The past twelve months have been a whirlwind of activities - some planned, some not so much - but all have been encouraging and insightful. Since the last time I shared my experiences with you, I have had the opportunity to do a little traveling. In October I attended the Southern Region Conference in Perdido Beach, Alabama. It was good to be able to spend time with my Southern Sisters and to have my passion reignited for Federation! In November, Delta Airlines delivered me to Washington, D.C. to attend the Orientation for the 2016-2018 GFWC Board of Directors. It was an information-packed four days and nights filled with meetings, a tour of the DC area AND our beautiful GFWC Headquarters at 1734 N Street and did I mention meetings ;)

I would be remiss if I didn't mention the many opportunities that I had to form bonds with fellow incoming State Presidents from across the country. I believe, if memory serves me correctly, there were 46 other women besides myself that were wearing the same shoes as me - just maybe not a size 10!!! Young and old, alike, we shared the same wide-eyed, childlike wonder with a little bit of apprehension for the whirlwind roller coaster ride we are all standing in line to get on!

As my time as MFWC President-elect draws to its' close, I would like to say Thank You to those of you who have believed in and encouraged me along the way. I won't even begin to name names, but YOU know who you are! My journey isn't quite complete, but in the twinkling of an eye 2018 will be here. For now, all I can say is...the Emerald City sure is shining bright!

**GFWC-MFWC Vice President
Becky Wright**

It has been an honor and a pleasure to serve as your Vice-President for this administration. I have gained valuable insights to all the wonderful happenings around our great state. I sit here with a full heart as I am reminded of the great works that come from this amazing group of ladies that make up our Mississippi Federation of Women's Clubs! What a great organization this is to belong to as we all are "Living the Volunteer Spirit"! As I am preparing the awards booklet, award cards, and certificates for our 118th State Convention, I am in awe of the difference our ladies are making not just in communities across Mississippi, but throughout the world. You have left a trail of glitter and brought sparkle to so many lives, and you will never be forgotten.

Twenty-eight MFWC General Clubs and two Juniette Clubs reported 240,536 hours of volunteer

service in 4,366 projects! Club donations totaled \$583,253 with additional in-kind donations of \$371,453. MFWC did a remarkable job raising \$117,661 in funds to support programs and projects. In addition, collectively we volunteered 9,827 hours, with club donations of \$82,649 and in-kind donations of \$58,544 in 297 MFWC projects! We should all be proud of the impact we make in the lives we touch with our dedication to service. If the effect of one goodhearted person is incalculable, just imagine for a moment the exponential effects of our federated family!

Thankfully, the fear of the unknown that many of us faced Judging Day 2015 was replaced with confident and unbiased judges who worked tirelessly to pick our winners. With few changes on our Reporting Form and our Chairmen with a year's experience under their belt, Judging Day 2016 was smooth sailing. My heartfelt thanks goes out to all who judged. We are blessed with a diverse group comprised of women of both wisdom and the eagerness to learn. Your patience and diligence made my job easier, as did the guidance of those of you who paved the way. As I continue to build on what I have learned, it is my hope that I may better serve you.

As we make our preparations to attend the GFWC Convention in Baltimore this June, we look forward to hearing Mississippi a lot. We have confidence in our MFWC Chairmen to produce winning entries with their way with words and figures from the amazing works of our members. Again, thank you for your service and your encouragement.

**GFWC-MFWC Treasurer
Diane Rouse**

Thank you, Ladies, for stepping up with a wonderful array of contributions given already through the Dues form and direct contributions. At this writing, \$31,149.10 has been contributed to GFWC partners' projects, GFWC-MFWC community service projects and the President's Special Project. As you know, many of the recipient organizations rely SOLELY on contributions to operate. Keep up the good work!

**GFWC-MFWC Corresponding Secretary and
Mississippi Clubwoman Editor
June Vaughn**

It has been my pleasure for the past 14 years to have been part of MFWC's communication efforts to provide vital information to our members for promoting and enhancing volunteer service on the national, state, and local club levels. Serving as Editor of the *Mississippi Clubwoman* Magazine 2010-2016 and as Circulation Editor 2002-2010 has been "joy unspeakable."

The support from MFWC Presidents, past and present, fellow board members, and clubwomen throughout the state has been overwhelming and was appreciated beyond measure. Friendships made and renewed as well as the "sweet, sweet" volunteer spirit of my federated sisters will never be forgotten.

Inspired by your servant hearts, I look forward to many more years of involvement with our wonderful federation as we continue to bring hope and change lives in our communities, state, nation, and world.

GFWC-MFWC Parliamentary

Judy T. Martin

Your Constitution and Bylaws Committee has been hard at work on a much-needed review of the organization's governing documents. This is evident from the proposed amendments to the GFWC-MFWC Bylaws that have been appended to the Call to Convention in this magazine.

As you can see, it will be very important for you to be at State Convention to cast your vote on these updates and suggested revisions. Please feel free to contact me if you have any questions about this process or about eligibility of voting delegates.

In addition, amendments to the GFWC-MFWC Standing Rules were made at the February 13, 2016, Winter Board meeting. The following amendments will take effect at the adjournment of the 2016 State Convention:

1. Standing Rule #9 is amended as follows: "The annual Convention of the GFWC-Mississippi Federation of Women's Clubs shall convene on the fourth weekend of April of each year unless there is a conflict with Easter. The Districts shall serve in rotation as official hostesses. The President, in consultation with the President of the host District, shall determine a suitable and affordable location. No contract for State Convention shall be executed without the prior approval of the Executive Committee."
2. A new Standing Rule #11 is adopted, which provides: "In even-numbered years, an installation ceremony shall be conducted for the Elected Officers after they are duly elected and prior to the commencement of their terms of office at the adjournment of the Convention. At the request of the incoming President, the Appointed Officers may be included in the installation ceremony. The wishes of the incoming President shall be considered in the selection of the person to conduct the installation ceremony, so long as it can be done at no additional cost to the GFWC-Mississippi Federation of Women's Clubs."
All subsequent Standing Rules will be re-numbered accordingly.
3. Standing Rule #19 is amended as follows: "All money from advertising or any other fundraising activities, along with monies from registration and meals, shall be put in the Annual Meeting Treasury. After all expenses are paid twenty-five percent (25%) of the balance in the Annual Meeting Treasury shall be transferred to the host District Treasurer and the remainder shall be to the GFWC-Mississippi Federation of Women's Clubs Treasurer and retained for future Annual Meetings and/or for hosting Southern Region Conference. All transfers of this money, along with an itemized statement of income and expenses, shall be completed by June 15."
4. Standing Rule #22 is amended as follows: "District and State GFWC-Mississippi Federation of Women's Clubs Youth Art contests

may be held annually according to established guidelines. If funds are available, First place District winners shall receive five dollars (\$5.00). Second and third place District winners shall receive certificates and/or ribbons. Sponsoring clubs of all winners shall receive award cards. If funds are available, First place State winners shall receive ten dollars (\$10.00). Second and third place State winners shall receive certificates and/or ribbons. Sponsoring clubs of all winners shall receive award cards."

Please update your Standing Rules accordingly. In addition, please note that corresponding editorial revisions will be made to the Bylaws, in order to correct any references to particular Standing Rules that are re-numbered.

I look forward to seeing you at State Convention. As always, please feel free to call me, if I can assist you in any way.

District Presidents' Messages

District I – Sherri Reid

I love club work and clubwomen! We just completed judging day at The MS School for the Deaf and Blind. It was a beautiful day in Jackson, MS! There were many board members attending and lots of great reports to read. One of the activities I like most in being a part of MFWC is sitting and reading reports. I love the creativity that each club puts into their club activities!

Every year at Judging Day, I leave with a renewed purpose for reporting better in the year to come than I did the year that we were judging. As I judge the reports I see the "Why we report". So this year as we listen to the awards at State Convention, renew within your club the excitement and purpose for reporting with vigor this year!

Thank you to the clubwomen in District I who are tenacious about reporting their hours and projects. Thanks also to the members of the clubs that put the reports together and get them to our MFWC State Vice-President! I know it takes many, many hours of putting them together.

I hope all of you are looking forward to State Convention this year in Cleveland, MS April 28-30. I am anxious to get to the Delta and see that flat land and eat some good food. Please make sure and get your registration forms in early for this Convention!

District II – Theresa Buntyn

It is hard to believe 2016 is already here and at this writing we are preparing for our District Convention March 5th in Louisville. Unfortunately, our district experienced a tragic loss in the death of Karen Wallace, Club President of The Round Table Club of Meridian last July. Karen was our convention chairman for the last District II Convention and did an outstanding job. Karen, who had never been to a district meeting, had a determined spirit, provided creative ideas, and ensured that members had fun at our convention. Karen, who had been very active in activities at Merrehope and her

church as well as with friends and her family, is missed by so many. A pink Christmas tree has been placed in the Williams House, located adjacent to Merrehope, in her memory. This tree is decorated with all of Karen's favorite things, special pictures, and items revealing her areas of service. I have included a picture of this tree and would encourage anyone in the Meridian area or visiting there to tour the Williams House to see Karen's special tree. We appreciate Donna White stepping up as Club President for Round Table Club of Meridian. We have had another change in our Club Presidents for the Present Day Club of Union. Joan Feliciano moved to Phoenix and Melissa Carleton, our District Treasurer, also stepped up to the plate and is serving as Present Day Club of Union Club President. Please join me in thanking both of these ladies for their willingness to serve and lead their clubs for this term. We lost a special group of ladies in the Sallis community, Twentieth Century Club of Sallis. These ladies have worked hard for their community despite their small size. Hats are off to each of these ladies for their many years of service to Sallis and the surrounding area.

We have indeed experienced several changes throughout our two years in many of our clubs and have dealt with various challenges. Despite this, our clubs are pushing forward to serve their local communities and remain steadfast in undertaking many projects in their local areas.

Listed below are some of the highlights and activities for District II.

- ❖ GFWC Ackerman Twentieth Century Club continued Distinguished Young Women Program.
- ❖ Enterprise Woman's Club held Christmas Tour of Historical Homes.
- ❖ Quitman Woman's Club hosted a Christmas Tea in Quitman.
- ❖ GFWC-MFWC Decatur Woman's Progressive Club participated in the annual East MS Christmas Party for male residents.
- ❖ Present Day Club of Union held a garage sale and raised money for Hope Lodge.
- ❖ Thursday Club of Walnut Grove identified veterans' graves in four local cemeteries. Each Veterans Day and Memorial Day the club places flags on approximately 100 graves.
- ❖ Round Table Club of Meridian and Fortnightly Club of Meridian held Tour of Trees at Merrehope.

Thanks to all our District II members for "Living the Volunteer Spirit" in our District II Community. I am so blessed to have met and served with you and to call you my Federated Friends.

Those who can, do.

Those who can do more, volunteer. "

-Author Unknown



District III – Abby May

Can you believe this administration is about to be harvested? All I can say is, "It has been an honor to serve as Your District President." I have represented you on the local, District, State, Southern Region and General Federation levels. It has been my pleasure and a tremendous joy!

As District III President, I know that District III blooms wherever it is planted. I have reviewed your reports and received the District's winners' package. You plant, nourish and grow in all that you do. Your communities reap the benefits because of your work. I look forward to seeing you at the District III Convention in Bruce. We will be planting a new slate of officers and cultivating your outstanding volunteer service. Thank you for your spirit of volunteerism. You are Bringing Hope – Changing Lives.

District IV – Ella Cronin

The 2014-2016 club years for District IV have been extremely eventful and challenging. President Darlene Adams' charge to all clubs was clear and personal: **"Let's get 'WILD' to finish the fight! 'Bringing Hope...Changing Lives'"** was very real. I was diagnosed with cancer and admitted to a hospital for chemotherapy followed by extensive radiation. Concurrently, the District set a strong agenda that included two annual conventions and a State convention at Delta State University. Deana Pittman, Vice President of District IV, stepped in with great support from her Club members in the Batesville Woman's Club. Also, with great skill and success, they planned and implemented two District Conventions in 2015 and 2016. Concurrently, with the continued celebration of the 125 year anniversary of the GFWC, District IV was selected to host the State convention at Delta State University in Cleveland, Mississippi in April 2016. Again, the District, the Cleveland Woman's Club where I am a member, the Batesville Woman's Club, the EPHFIC Club in Cleveland, and the Greenwood Woman's Club are joining to plan and prepare for the convention under the City Chairman, Norma Cooper, President of the Cleveland Woman's Club. Committee assignments were made and in a coordinated effort with State officers, preliminary convention preparations were completed—University facilities designated for meetings, a dinner arranged at the Cleveland Country Club for Executive Officers meeting prior to convention registration, food menus identified and costs approved for all convention functions, motel rooms reserved with special pricing negotiated and contracted, a special invitation accepted to tour the new GRAMMY facility on the Delta State University campus, the list could go on-and-on. The leadership of Darlene Adams and Sheila "Tinker" Forrester was most effective and appreciated.

I am finishing the **"Fight"** with the great team support of District IV clubs, committed club members, and our excellent State leaders. The City of Cleveland and Delta State University are delighted to welcome GFWC-MFWC members and special guests at Delta State University April 28, 29, and 30 and to celebrate 125 years of excellent service in our communities, state, nation, and international affiliates.

District V – Melba Watkins

My 2014-2016 service as MFWC District V President is almost in my rear view mirror. I am not saddened by that because I know that I have gained knowledge about our organization, I have been forced, in a gentle way, out of my comfort zone and I have gained true friendships during this time. Being able to share volunteer service with one's peers is a joyous and productive experience. It allows growth in service, partnerships, camaraderie, compassion and patience.

Working with President Darlene Adams and her devotion to helping find a cure for cancer and the GFWC Partnership with St. Jude Children's Hospital, I have been able to volunteer for two projects that are near and dear to my heart. My family, like most, has been hit by cancer many times and the American Cancer Society has

always been there with help and support. For the last ten years our family has been a real cheerleading squad for St. Jude. With an extremely rare condition known as I-Cell their team gave life to a little fellow who really wasn't given much hope for survival. Today he is a bright, happy, creative eleven year old who is in remission due to the amazing work at St. Jude. Our family continues to be blessed.

During the last two years I have had the pleasure and honor of visiting with several clubs in District V. Thank you to the LeBonte' Women's Club of Clinton, the Crystal Springs Floral Club, the Florentine Club, the Florentine Evening Club, the Raleigh Woman's Club and the Twentieth Century Club of Prentiss for your hospitality, kindness and most of all for making me feel like an active member of your club. My traveling partner, Annette Ainsworth, and I talked about how special all of you made us feel. Thank you for that.

In my approximately twenty years in MFWC I can truthfully say that these past two years have been a wonderful experience for me. I am blessed by having had this opportunity and I look forward to continued service with our fine organization for I do think I have a few more years left in me.

Thank you again for your kindness and your support.

GFWC-MFWC Special Appointments

***MFWC President's Special Project:
"Let's Get Wild to Finish the Fight!"***

***Abby A. May, Chair
Frances Brown, Tommye Rosenbaum,
and Tami Harris***

Well, we iterate that the words "Thank You" are small words for all that YOU did to support GFWC-MFWC President Adams' Special President's Project – The American Cancer Society. You carried out 237 programs and projects, volunteered 8,077 hours, and raised and donated money for the benefit of the American Cancer Society and Hope Lodge. You went *Wild to Finish the Fight!* President Adams and her PSP committee look forward to sharing the final monetary tally with you at State Convention on all your efforts. We know that although this has been an emphasis this administration, you will continue to *Get Wild to Finish the Fight!*

You all are the Queen of Hearts! You are "Bringing Hope – Changing Lives."

GFWC-MFWC Standing Committees

Ways and Means Annajeral Knight, Chair

Let's wrap up this ways and means campaign with a sell out! We have left in our pink t-shirt stock 6 shirts in a size small, 6 shirts in a size large, and 3 shirts in a size extra-large. These shirts are great for

working out either in the garden or at the gym. Let's clean out this line!

We also have the lavender cancer shirts, and they are available in all sizes!

We have some note cards left. They are good for writing those "Thank You" notes to everyone who put your District Convention together!

We have our cucumber dip packets – just ready for a club meeting, church supper, party, or even just for healthy snacking! Let's all buy a pack or two!

Of course there are opportunities to own at the ways and means table. You never know what might be there! Save some dollars to pitch our way and let's get wild and finish the fight!

Don't forget this is the year to turn in your big Hog Wild Challenge check, and the winners will be announced at State Convention! **Thank you!!!**

GFWC-MFWC Special Committees

Fund Development Jo Anne Reid, Chair

The Fund Development Committee has been hard at work at our last two state meetings! A 50/50 at Summer Institute raised \$124.00, and we all had fun participating in a 50/50 at the MFWC Winter Board Meeting on February 13th called "Buy A String or Three", with special red, pink and silver Valentine beads. This game, with a little "twist" raised \$225.50 for MFWC and Beth Herring of Fine Arts Club of Waynesboro was the lucky winner of the other half!

Plans are already underway for several different activities at the 118th MFWC State Convention to be held the last weekend in April in Cleveland, MS. There will be a special fundraiser at the Executive Board Dinner and opportunities to purchase chances on the "President's Purse", filled with wonderful "goodies" (maybe even some \$CASH\$), donated by the MFWC Gavel Club, our Past Presidents. "Buy A String or Three" was such a big hit that a rerun has been requested!

Other fun activities are in the works, so make your plans **NOW** to attend and start saving "a little along" so you can benefit MFWC and have a **great** time doing it!

Sarah Peugh Butterfly Scholarship Shirley Hilburn, Chair

As I write this article, I am anxiously awaiting the arrival of Sarah Peugh Butterfly Scholarship applications that are due to GFWC-MFWC President Darlene Adams by March 1. Mississippi has some awesome Juniorettes, as evidenced by the amazing accomplishments of last year's scholarship applicants. I know the scholarship committee members will be equally impressed this year.

Thanks to general club members and Juniorette advisors for assisting and encouraging these ladies in applying for the scholarship. Thanks, also, to those clubs who contributed on the dues form. Remember, if each club member contributes only \$1.00 per year, we can fund this \$1,000 scholarship and make such a difference

in the pursuit of a Juniorette's educational goals. Thanks for all you do on behalf of MFWC!

Community Service Programs

ARTS

Meri Ford Newell, Program Chair

As we head out of the winter and into spring in Mississippi, let me thank you for all that you do to support, educate, and foster the arts in your clubs, schools and communities.

As I was reading your club reports today, I was again impressed by all of the different projects happening across Mississippi to bring music, visual arts, theater, and literary experiences to our children both in and outside the classroom. Please keep supporting the performing and creative arts in schools; with state budgets in flux, arts programs are under fire. We need to do all that we can to ensure that future generations have the means for self-expression in these media.

Please continue to support local theater as well as traveling productions in venues such as Thalia Mara Hall and Bologna Performing Arts Center. Come to Hattiesburg during the second week of June to see "Rock of Ages" in conjunction with Festival South. We are so fortunate to have numerous opportunities to see good theater in Mississippi!

Finally, continue to volunteer your time and talents. Most arts events large and small depend on people like you who live that volunteer spirit. Call your local arts council, school system, university, college, etc. and find out how you can be of assistance. When your club actively volunteers for an event, take pictures so that we can see the wonderful work that you are doing. Don't forget to report and include this evidence in your end-of-year reports. Thank you again for all that you do to support the arts in our great state.

CONSERVATION

(Information from Jenny Schmidt, National Program Director for our new GFWC Conservation Partner, The Nature Generation)

"We are so pleased to be your new Conservation Partner, and to provide you with information on our projects and awards! We have a number of **exciting projects for GFWC clubs**, all focused on the environment and teaching children about the role they have in protecting it. Please visit our website at <http://www.natgen.org/gfwc/> to read more about project options for your clubs.

We also wanted to let you know about our **Conservation Awards** which will be awarded at Convention. We have state and club awards focused on club projects, as well as money raised for our programs. All information and applications can be found on the GFWC national website or on our website at <http://www.natgen.org/gfwc/>

We are using the month of April to **challenge clubs to raise money** for our programs and to help us reach

the next generation of environmental stewards. I encourage you to support our challenge in any way you can – hold a fundraiser, pass the plate – every dollar counts!

We have also started a **newsletter** focused on our work with GFWC and the first issue is out.

Thanks for allowing us to be your Conservation Partner!”

You may contact Jenny at:
Jenny Schmidt
National Program Director
Cell: 703-727-8242
Email: jschmidt@natgen.org
www.NatGen.org

EDUCATION

Vera Beech, Program Chair ***Penny Barr, Partnership Chair***

What a difference MFWC clubwomen made in the lives of others through education community service and partnership projects, as evidenced by the 2015 club reports submitted for judging day! Out of 22 clubs reporting, there were an impressive 461 projects, nearly 40,000 volunteer hours, approximately \$80,000 donated, as well as \$35,000 in kind. This included, but was not limited to, scholarships for high school students across our state to assist with college tuition, donations of supplies and monies to local schools, recruiting and serving as tutors, supporting library reading programs, promoting library card sign ups, supporting teacher appreciation projects, and educating club and community members on local and national literacy levels. The 400 women represented in these reports are a shining example of “living the volunteer spirit.”

I would like to encourage you to consider planning projects or activities to include in 2016 reports that coincide with some of these upcoming important dates, such as, March 2, Read Across America Day, celebrating the life and work of Theodore Geisel, aka Dr. Seuss; April 10-16, National Library Week and Week of the Young Child; April 18-22, Public School Volunteer Week; and May 2-6, PTA Teacher Appreciation Week. Also, remember to support our partner, Hugh O'Brien Youth leadership program (HOBY) by sponsoring and/or supporting a high school sophomore in attending the May conference, and bringing Sam's or Wal-Mart gift cards to district or state convention. The gift cards enable HOBY staff to purchase snacks and other items for the leadership conference.

Kudos to you for your hard work and efforts the past year, and I wish you well in your volunteer endeavors in 2016. Remember to strengthen friendships and have some fun along the way!

“Every day is a new beginning; take a deep breath and start again.” --- Unknown

HOME LIFE

Sue Addy, Program Chair

Greetings from Sue Addy, GFWC-MFWC Home Life Community Service Program Chairman!

During the 2015 calendar year, twenty eight clubs involved 600 members in 804 projects that benefited the health and well being of their communities, state, nation and world. 66,247 hours of work resulted in \$177,593 donated and \$179,655 in kind offerings. An additional 92 partnership projects that required 11,414 volunteer hours raised \$12,552 in donations. Although this administration will come to a close in May, the need and work in the Home Life CSP and Partnerships will continue into the future.

Throughout the spring, strive to finish the President's Special Project with the energy that was demonstrated in the beginning. Involve your club in Relays for Life, fund raising for the construction of Hope Lodge, and individual assistance for cancer patients. Let's finish the fight, bringing hope and changing lives as we fight against cancer.

INTERNATIONAL OUTREACH

Theresa Buntyn, Partnership Chair

Together, GFWC-MFWC members have researched, donated, and shared projects for our International Outreach CSP Partners. Our four partners have various ways club women can make a difference all across the world by meeting nutritional, housing, water, health and many other needs. Let's take a look at each of our partners and discover something new or an idea other clubs have used to support our International Outreach CSP Partners.

Together, GFWC-MFWC members and **Operation Smile** can give children new smiles and new lives. Club ladies can raise funds to support Operation Smile's programs to give a child a new smile and hope for a better future. Members can sew and prepare Smile bags, Smile dolls, children's hospital gowns, blankets and quilts, and armbands for children undergoing surgery. Clubs can collect needed items and supplies; needs lists are in the information packet.

GFWC-MFWC club members can partner with **Shot @ Life**, a movement to protect children worldwide by providing life-saving vaccines where they are most needed. Every 20 seconds, a child dies of a vaccine-preventable disease like pneumonia, diarrhea, measles, and polio. You can help save a child's life by encouraging, learning about, advocating for, and donating vaccines. GFWC clubs can support Shot@Life by: Planning advocacy and awareness events around key dates such as World Polio Day (October 24) and World Pneumonia Day (November 12) It's easy to help, and it starts when you get your immunization at Walgreen's. When you get a whooping cough, shingles, pneumonia or any other immunization at Walgreen's, you could help save a life. Together with the United Nations

Foundation's Shot@Life campaign, we're helping to provide lifesaving vaccines to children in need.

GFWC-MFWC clubs across the state have participated in the Trick-or-Treat for **UNICEF** program, in which kids across the country collect money to help children of the world survive and grow. Clubs have collected money at club meetings and some have added businesses to collect money for UNICEF. UNICEF promotes assistance in combating Human Trafficking. Several clubs held informative programs on this growing problem locally and internationally. The Fine Arts Club of Bruce, Twentieth Century Club of Bruce, and Bruce Fine Arts Juniores held a joint meeting in November for a special program on "Human Trafficking" presented by Paula Broome, Chief Deputy Bureau of Victim Assistance in Jackson, MS. Cosmopolitan Club of Petal held a program on "Human Trafficking" that was presented by Donna Harbin of "Advocates for Freedom." There is a current opportunity to develop and build a Courage House in Mississippi that would allow girls who have been sold for sex a place to escape and live.

Club members can go to the **Heifer International** site and purchase a basket or animals to be given to underdeveloped countries. For spring, an idea currently on the site is:

Ready for the Chick Challenge? Check your chick knowledge with five quick questions. Plus, every completed quiz earns \$0.50 for Heifer International. Following the quiz the participant has an opportunity to give the gift of a flock of chicks. This is a perfect gift to honor someone at Easter. The gift of a flock of chicks can change the lives of a family forever.

I encourage all of our GFWC-MFWC clubs to identify at least one of our International Outreach CSP Partners and discover how your club can make a difference in lives of others.

GFWC Signature Project: Domestic Violence Awareness and Prevention ***Amy Jacobs, Chair***

Thank you for your continued efforts in bringing awareness to prevent and stop Domestic Violence and supporting those affected. You reported 162 projects, volunteering 1,346 hours, and donating \$6,391.49. GFWC-MFWC is being heard! Please continue to support your local shelters and continue to raise awareness. And don't forget that abuse also happens to men, the elderly and teens.

You are Bringing Hope – Changing Lives!

GFWC ADVANCEMENT

Legislation and Public Policy ***Dorothy Thomas, Chair***

REMEMBER!!! General Federation of Women's Clubs provides clubs and Clubwomen a super easy way to participate in GFWC's legislation and public policy activities. It also gives all of us easy projects to include in our annual reports. The program is TAKE ACTION.

In 2015, GFWC gave us opportunities to contact our Congressmen and Senators on a wide range of issues. Among them were congressional bills to protect victims of sexual assault on college and university campus and in military service, to provide education aid for K-12 age children, action to prevent us from having to deal with bigger and longer trucks on our highways and to aid for women and children who are victims of domestic violence.

How do we get involved? On internet login to www.gfwc.org. When the Federation's homepage comes up on your screen you have two choices. At the bottom of the page you can sign in to receive GFWC emails. Or, at the top of the page you can click on "What We Do." Keep your cursor depressed and move it to "Legislation Action Center." Click

This takes you to a section which provides abundant information. Current TAKE ACTION information is at the top of the page. On the right side of the page is an invitation to sign up for GFWC messages. You may want to do that last and spend some time in reviewing the information on current issues GFWC is asking you to support. Also on this page you can see a list of Congressional bills with the word "Federal" followed by the House of Representative (HR) or Senate (S) bill number. If you click on one of the bills a listing of members of the House or Senate who are sponsoring the bill will be displayed. This makes it easy to see if our members of Congress are current sponsors.

Be sure, if you haven't already signed in to receive email message for the Federation, do that. To TAKE ACTION on specific issues GFWC is asking you to support, click on that issue. A section of the screen will be displayed to allow us to send a message to our member of the House or Senate where the issue is active.

GFWC's primary focus is on federal issues. However, that is not the only venue we are likely to want to be active in. Remember last year's high level, and successful, state legislation campaign, led by MFWC President Darlene Adams, to obtain a new 15-year lease on the state Headquarters site, plus an option for an additional 15 year lease. Many of the 2015 annual reports submitted on Legislation and Public Policy included report information on actions taken by Clubs and Clubwomen during the movement to get that critically essential new Headquarters lease legislation. Many of the reports on 2015 actions included other legislative and public service activities by individual Clubwomen.

Remember GFWC, MFWC and affiliated Clubs are advocates – NOT lobbyists. Useful information to help us be advocates and NOT lobbyists is available in the GFWC's Legislation and Public Policy Advancement Guild in the 2014-2015 GFWC CLUB MANUAL available on internet.

"Together we can make a world of difference."
~Craig Kielburger

Membership

Tinker Forrester, GFWC-MFWC President-elect and Membership Chair

It was wonderful getting to see everyone on February 13th in Jackson for Judging Day! I am so thankful that the weather chose to cooperate and provide us with perfect conditions!

I enjoyed getting to see friends that I haven't seen since this past summer but, more importantly, I enjoyed reading the different ways you educate and encourage your current membership and the innovative ways you go about recruiting new ones!

The current membership for GFWC-MFWC stands at 960 members in 44 General clubs and 181 members in 9 Juniette clubs, which equals a combined total of 1,141 members in 53 clubs.

Of the 30 clubs that turned in reports from across the state, 23 (2 of those being Juniette Clubs) turned in reports in the Advancement Area – Membership.

I am pleased to tell you that the combined totals for those reports are:

480 members completed and/or participated in 169 projects logging 2,537 hours and spending \$7,815.00 to promote Membership in their respective clubs and communities. My hat is off to those diligent Report Writers for a job well done. HOWEVER, can you just imagine what those totals would look like IF all the clubs in MFWC had reported, at the very least turned in the Report Cover Sheet with their statistics! Well, let's pull up our bootstraps and step out there to be an encouragement to those who don't realize the impact and importance of reporting!

Please feel free to give me a call, text or email if I can ever be of assistance to your club.

Women's History and Resource Center

Becky Rhinehart, Chair

Thanks so much to the clubs who worked diligently in the WHRC Advancement Area in 2015. Those clubs reported a total of 101 projects with 3,040 volunteer hours, and spending \$3,107.34. Widespread involvement in WHRC projects was reported in all districts.

The Florentine Club of Florence's main WHRC project was the collection of archival material from the local newspaper. They met once a week to put the material in bound books that are indexed for future historians. Additionally, they worked with the Florence Schools to get students to help them scan this archival information onto disks. This project has benefited the club and the city, as well as encouraged the students to know their local history.

In recognition of March as Women's History month, Fine Arts Club of Bruce WHRC chairman presented a history of the Mason fruit jar at the March meeting. Afterwards, members shared vintage heirlooms with a show-and-tell.

GFWC-MFWC Contests

Youth Art

Libby Everett, Chairman

Youth Art is an area that is near and dear to my heart, and I am thrilled each year to see the talent expressed by some of the young artists.

Youth Art is a state competition only. Winners are not sent to GFWC for judging so there is no need for a GFWC consent form signed by the parents, however, the club may choose to send a letter to the parent notifying them that their child's artwork has been chosen to be submitted.

Holding an art show is not a requirement. You may choose the selection process your club uses to determine submissions.

First place district winners in each class and division are sent to the state chairman for judging. Districts provide cash prizes if that is in their bylaws. First place winners in each class and each division would be transported by the president or her designee to me.

Changes to the Youth Art Guidelines are reflected in the MFWC handbook. Please note the changes to Classes and Divisions. We hope this will clarify some issues that have been noted in the past.

When submitting artwork, please be respectful of the artist's work-no matter how young. Take care to treat delicate artwork with care and cover with a transparent material or fixative – NO GLASS. Please do not submit art work on copy paper unless it is on backer board, poster board, card stock, or something to keep it tidy-NO FRAMES. I receive many pieces of youth art each year and I take special care that they are returned to the clubs in much the same way they were given to me.

At district conventions, a receptacle should be provided for the artwork to be transported by the state president. Two pieces of poster board taped together on three sides makes an excellent container.

All district submissions are displayed at the state convention. MFWC provides a cash prize (\$10.00) to the 15 first place state winners. Second and third place receive a ribbon. Districts/clubs are responsible for picking up their artwork at the conclusion of state convention.

Please contact me if you have any questions.

Libby Everett

Libby_everett@hotmail.com

601-544-8463 (H)

601-466-9418 (C)

"The heart of a volunteer is not measured in size, but by the depth of the commitment to make a difference in the lives of others."

~DeAnn Hollis

GFWC Jennie Award 2014-2016



MFWC is pleased to recognize Paula Jeffery as its 2014-2016 recipient of the GFWC Jennie Award. This award is named in honor of GFWC's founder, Jane Cunningham Croly, who wrote for national newspapers under the pseudonym, "Jennie June." The award highlights those extraordinary clubwomen who epitomize her spirit of independence, courage and persistence through their roles as volunteers. The only national honor that recognizes individual members for personal excellence, it is the highest honor bestowed by GFWC.

Paula Jeffery is the epitome of the GFWC volunteer as she gives freely of her time, talents, and resources while pouring her heart into serving her club, community, and family. Born and raised in Bruce, Mississippi, Paula was a leader in her school and community at a young age. Such leadership skills have dominated her adult life. While in college, she met and later married Miles, her husband of 46 years. They made their home in Bruce and raised their now adult twins, Allen and Ellen.

Paula purchased a local gift shop in 1981 and began a successful career as a businesswoman and esteemed community leader. As current co-owner of "Jeffery's" with her daughter Ellen, Paula is recognized as a prominent entrepreneur who is continuously giving back to the community.

A member of the GFWC-MFWC Fine Arts Club of Bruce since 1983, Paula has served two terms as President and held every officer and chair position. For Paula, federation involvement is a family affair. Her mother was a federated member for many years and her daughter Ellen is an active member of the Fine Arts Club of Bruce. Paula is providing a legacy of community service for her two grandchildren and instilling in them an attitude of caring and sharing.

Paula is most passionate about projects that benefit and improve her community. She coordinated and held daily dessert sales of members' home baked pies and cakes by the piece at her business 2001-2005 with all proceeds going to the club's designated community improvement projects including an \$80,000 community playground/pavilion, Bruce Museum Renovation, and Town Square Decorations. Her unique vision that raised over \$15,000 was evidence that desired funds can be raised "a dollar at a time."

One of Paula's most committed causes is Cancer Awareness as so many club members' lives and families have been touched by cancer, including her Dad and her Mom, both of whom she cared tirelessly for during their lengthy illnesses. Her husband Miles is a cancer survivor. A project special to Paula is the annual Bruce Sawmill Festival. Paula has joined Fine Arts Club fundraising activities at the events including pancake breakfasts, cake walks, pie sales, homemade ice cream sales, and T-shirt sales. Paula played vital roles in the club's 65th, 70th and 75th anniversary celebrations. Serving on the committee for organizing the events, she led the club in recognizing past club leaders. She has been instrumental in seeking out and encouraging women of all ages and teenagers to become a part of federation efforts.

A member of First Baptist Church, Bruce, Paula has taught Sunday School for five year olds for over 40 years. She is active in all church programs and ministries and has served on most all committees.

In recognition of her lifetime of volunteer service and "putting service before self", Paula received the Bruce Chamber of Commerce Business Improvement Award in 1997 as well as the Chamber's Business of the Year Award multiple times. She received the Rotary Club's Vocational Award in December 2002, was named her club and District Clubwoman of the Year in 2003, and chosen as the Bruce Chamber of Commerce's 2014 Citizen of the Year.



OFFICIAL CALL
GFWC-Mississippi Federation of Women's Clubs, Inc.
118th State Convention
Delta State University Campus
April 28 – 30, 2016
Darlene C. Adams, GFWC-MFWC President 2014-2016
“Bringing Hope – Changing Lives”

The one hundred eighteenth annual convention of the GFWC-Mississippi Federation of Women's Clubs, Inc., will be held in Cleveland, Mississippi, Thursday, April 28, through Saturday, April 30, 2016.

REGISTRATION AND INFORMATION

The Convention is open to all members of GFWC-MFWC.

Registration Schedule:

Thursday, April 28th 12:30 – 2:30 p.m./4:00 – 7:00 p.m., Hampton Inn Lobby, 912 North Davis Avenue in Cleveland, MS
Friday, April 29th 8:00 a.m. – 5:00 p.m., Delta State University, Jobe Hall
Saturday, April 30th 7:30 – 9:30 a.m., Delta State University, Jobe Hall

All members attending must be registered. Advance registration is necessary for all meal tickets. Prices and the meal reservation form, along with the Credentials Card, can be found on the following page.

The deadline for hotel reservations is April 4, 2016. The block of rooms will be released after this date and regular rates will apply at \$139 + tax nightly. You may make your own room reservations by calling 662/846-2915. You must identify yourself with the group-block **“MS Federation of Women's Clubs.”** The group-block room rate is \$119 per night (*not including tax*) through April 4, 2016. Check-in is 3:00 p.m., and checkout is 11:00 a.m.

The deadline for meal reservations to be received is April 13, 2016. Meal reservations may not be guaranteed if received after this date.

EXHIBITS

The Exhibit Room will close at 6:30 p.m., Friday, April 29th, and all Youth Art, Photography, Scrapbook, and Yearbook entries **MUST** be picked up Friday evening between 6:00 and 6:30 p.m. Clubs are completely responsible for retrieving entries from the Exhibit Room.

MENU OPTIONS

Menu options will be offered for the evening meals. Please indicate your menu preferences on the registration form. Please understand that selections are not guaranteed, but every effort will be made to provide you with the meal of your choice. For the Thursday evening Board Dinner, the choices are: 1) beef, or 2) seafood. For the Friday evening Banquet, the choices are: 1) pork, or 2) chicken.

REPRESENTATION

The Voting Body shall consist of the General Officers; Appointed Officers; Past State Presidents; State Chairmen of Standing Committees, Special Committees and Community Service Programs; District Officers and Chairmen, corresponding with those of the State; and, regularly accredited Club delegates. Voting delegates shall wear a special designation on their name badges. Each Federation Club of fifteen (15) members or less shall be entitled to representation by the President or her appointee and one elected delegate. For each additional membership of fifteen (15) or major fraction thereof, a club shall be allowed another delegate.

RESOLUTIONS

Emergency resolutions may be presented to the Resolutions Committee. All other resolutions must be submitted in advance, pursuant to Article IX, Section 9 B-C of the GFWC-MFWC Bylaws. *An emergency resolution is one arising from a sudden condition calling for immediate action, which because of its nature could not have been submitted at the designated time.*

Registration and Meal/Workshop Reservation Form

Mail to:

Rachel Tate, Registration Chairman
809 S. Fifth Avenue, Cleveland MS 38732
602-719-3109
racheltate@cableone.net

Club member: _____
District: ____ **Club:** _____
Phone #: _____

	<u>Member</u>	<u>Booster</u>
Registration (1 day only)	_____ \$15.00	_____
Registration (more than 1 day)	_____ \$20.00	_____
Tour to Grammy Museum/Delta Music Institute	_____ \$10.00	_____
Executive Board Dinner, Thursday, 4/28 (Please circle your preference: beef medallions or shrimp & grits)	_____ \$36.00	_____
Gavel Club Continental Breakfast, Friday, 4/29 (Gavel Club Members Only)	_____ FREE	_____
Luncheon, Friday, 4/29 (boxed lunch)	_____ \$12.00	_____
Membership/Leadership Workshop, Friday, 4/29 (Fun interactive workshop presented by GFWC COO Rosemary Thomas. All members are encouraged to attend.)	_____ FREE	_____
Banquet, Friday, 4/29 (Please circle your preference: pork or chicken)	_____ \$26.00	_____
Prayer Breakfast, Saturday, 4/30	_____ \$17.00	_____
Post-Board Luncheon, Saturday, 4/30 (boxed lunch) (For 2016 – 2018 Executive Board)	_____ \$12.00	_____
*Registration Late Fee	_____ \$10.00	_____
TOTALS:	_____	_____

**Per GFWC-MFWC Standing Rule #8, a late fee of \$10.00 will be assessed for registrations received after the deadline.*

CREDENTIALS CARD GFWC-MFWC 118th Annual Convention

Name: _____ **Club:** _____ **District:** _____

_____ **I am a Non-Voting Delegate.**

_____ **I am a Voting Delegate, because I am: (Please mark *only* the highest position you hold.)**

_____ **An elected or appointed State Officer of GFWC-MFWC.**

_____ **A Past State President of GFWC-MFWC.**

_____ **A State Chairman of a Standing Committee, Special Committee, or CSP.**

_____ **A District Officer or Chairman corresponding with those of the State.**

_____ **A regularly accredited club delegate. (Each club of 15 members or less shall be entitled to representation by the President or her appointee and 1 elected delegate. For each additional membership of 15 or major fraction thereof, a club shall be allowed another delegate.)**

If voting delegate, please have Club President to sign, and mail this along with your meal reservations.

_____, Club President

Please mail this completed form, along with a check payable to GFWC-MFWC 2016 State Convention, to Rachel Tate at the address above. The registration form is also available for download from www.gfwc-mfwc.org. All registration forms and fees must be received by April 13, 2016.

TENTATIVE Schedule of Events*
118th State Convention
“BRINGING HOPE – CHANGING LIVES.”

Thursday, April 28:

12:30 – 2:30 p.m. **Registration** (Hampton Inn Lobby)
1:30 p.m. **Audit Committee Meeting** (State President’s Suite)
Immediately following **Finance and Executive Committee Meetings** (State President’s Suite)
3:30 – 5:00 p.m. **Tour to Grammy Museum**
4:00 – 7:00 p.m. **Registration resumes** (Hampton Inn Lobby)
6:30 p.m. **GFWC-MFWC Executive Board Dinner Reception** (Cleveland Country Club, Cash Bar)
7:00 – 9:00 p.m. **GFWC-MFWC Executive Board Dinner and Meeting** (Cleveland Country Club, *Sunday dress or party attire.*) All GFWC-MFWC members are invited with only Board members allowed to vote.

Friday, April 29:

7:30 a.m. **Gavel Club Breakfast** (Hampton Inn, room location TBA)
8:00 a.m. – 9:00 a.m. **Complimentary Morning Coffee** (Jobe Hall Lobby)
8:00 a.m. – 5:00 p.m. **Registration** (Jobe Hall Lobby)
9:00 a.m. **Convention Convenes** (Jobe Hall, *Business attire*)
Reports by: Officers, Executive Board, Audit Committee, Headquarters, 1935 Society, State Institutions, MPB, Constitution & Bylaws Part I
12:00 p.m. – 2:15 p.m. **Luncheon** – “GFWC’s 125th Anniversary Part II”
Reports by: GFWC Signature Project - Domestic Violence Prevention & Awareness, Advocates for Children, WHRC, Legislation & Public Policy, Leadership, Membership
2:30 – 4:30 p.m. **Business Session**
Reports by: Home Life, Arts, Youth Art, Scrapbooks, Yearbooks, Fundraising & Development, Communications & Public Relations, Constitution & Bylaws Part II, Nominating
4:30 – 5:15 p.m. **Leadership/Membership Workshop: GFWC Chief Operations Officer, Rosemary Thomas**
(All members are encouraged to stay and participate in this no-charge workshop.)
5:15 – 6:30 p.m. **Free Time**
Exhibit Room Open
6:00 – 6:30 p.m. **Pick up All Exhibits** (*Youth Art, Photography, Scrapbooks, and Yearbooks*)
7:15 p.m. **Processional Assembles**
(MS LEADS Participants, Jennie Nominee, District Clubwomen of the Year, Club Presidents of District Clubs of the Year, District Presidents, Past State Presidents, GFWC-MFWC Elected/Appointed Officers, & GFWC Guests)
7:30 – 9:30 p.m. **Banquet** - (Ewing Hall, *Semi-formal or formal attire*). **Reports by:** PSP, LEADS, Jennie Award, All Scholarships
Followed by Installation of 2016-2018 Officers
10:00 – 11:00 p.m. **Reception honoring GFWC Director of Junior Clubs, Cathy Jo Bryant and Incoming 2016-2018 GFWC-MFWC State President, Tinker Forrester**

Saturday, April 30:

8:00 – 9:30 a.m. **Prayer Breakfast and Memorial Service – featuring speaker Jennifer Walker**
7:30 – 9:30 a.m. **Registration**
9:45 a.m. – 12:30 p.m. **Business Session** (*Business or business casual attire since it is a travel day*)
Reports by: District Presidents, Conservation, Education, International Outreach, Public Issues Juniores, Constitution & Bylaws Vote
Awards: Juniores of the Year, Clubwoman of the Year, Juniores & General Club of the Year
Adjournment
12:45 – 2:00 p.m. **Post-Board Luncheon for 2016-2018 Executive Board**

** If a report is moved to another day/time slot, the chairman will be notified. Chairmen are requested to always have your report with you at all meetings. If possible, we will continue with reports as time permits, in order to expedite the program.*

PLEASE BRING FOR:

President’s Special Project: * National chain Gift Cards for “Opportunities to Win” Gift Card Tree
Ways & Means: * “Silent Auction” Items and “New to You” Clothes and Accessories

PROPOSED AMENDMENTS TO THE GFWC-MFWC CONSTITUTION AND BYLAWS

By direction of the Executive Board, the Constitution and Bylaws Committee recommends the following amendments to the Bylaws. These proposed amendments will be presented for a vote at the 2016 State Convention:

1. Amend Article 1, Section 1.C. to provide that: a) a Member-at-Large is to pay District dues in the District in which she resides, and b) a Member-at-Large may have a vote at state meetings, if she holds a position that is entitled to a vote.

IF ADOPTED, Article 1, Section 1.C would read: "Members-at-Large shall be those women in counties where there is no organized GFWC-Mississippi Federation of Women's Clubs club, or in which membership in a GFWC-Mississippi Federation of Women's Clubs club is not available. Members-at-Large shall pay District dues in the District in which they reside. At Conventions and Executive Board Meetings, Members-at-Large may have a voice but not a vote, unless elected or appointed to a position with a vote."

RATIONALE: To clarify District membership for Members-at-Large and allow voting privileges for Members-at-Large who are appointed or elected to a position on the Executive Board.

2. Amend the last sentence of Article III, Section 4.A.2.k to allow for the Editor to serve more than two consecutive terms.

IF AMENDED, the final sentence of Section 4.A.2.k would read: "No appointed officer shall be eligible to serve more than two consecutive terms, except the Editor."

RATIONALE: To conform to current practice.

3. Amend Article III, Section 4.B.1.d to delete the term "ex-officio" in describing the President-elect's membership on the Finance Committee and conform with Article IX, Section 3.A (which provides that all elected officers are "members" of the Finance Committee).

IF ADOPTED, Article III, 4.B.1.d (duties of the President-elect) would read: "She shall serve as ~~an ex-officio~~ member of the Finance Committee, and an ex-officio member of the Headquarters Committee, the Audit Committee and the Long-Range Planning Committee."

RATIONALE: To clarify that the President-elect is a member (not an "ex-officio" member) of the Finance Committee and remove inconsistencies between Article III, Section 4.B and Article IX, Section 3.A.

4. Amend Article III, Section 4.B.1.e to insert the word "authorized" to describe the contracts that a President-elect co-signs.

IF ADOPTED, Article III, Section 4.B.1.e (duties of the President-elect) would read: "She shall co-sign, with the President, all authorized contracts which would extend into her term of office as President."

RATIONALE: To provide consistency with other provisions that require and describe proper authorization for contracts.

5. Amend Article III, Section 4.F.1 to delete Corresponding Secretary from the list of Appointed Officers and to insert the Juniorette Director as an Appointed Officer. This would also require editorial changes in other areas of the Bylaws where the Appointed Officers are listed or mentioned (such as Article III, Section 4.A.k describing the duties of the President to appoint certain officers and Article VI, which lists those invited to Executive Committee meetings).

IF ADOPTED, Article III, Section 4.F.1 would read as follows: “F. The President shall appoint persons to the following positions. The persons in these positions shall be the Appointed Officers: 1. Juniorette Director The Juniorette Director shall lead the Juniorette Clubs as specified in Article I, Section I.B, and shall serve on the Membership Committee.—~~Corresponding Secretary a. The duties of the Corresponding Secretary shall be: i. To conduct the correspondence of the GFWC Mississippi Federation of Women’s Clubs as requested by the President. ii. To keep a roster of the State and District Officers, Community Service Program and Committee Chairmen, and Presidents of member clubs.~~” Corresponding editorial changes would be made in all other instances where the Appointed Officers are listed or mentioned.

RATIONALE: To clarify that Article III, Section 4.F is the official listing of Appointed Officers; to delete the obsolete office of Corresponding Secretary, whose duties overlap with the Circulation Editor of the *Mississippi Clubwoman*; and, to add the Juniorette Director, as the a leader of a large segment of the membership, to the list of Appointed Officers.

6. Amend Article III, Section 4.F by inserting subsection 5 to include the Chaplain as an Appointed Officer. This would also require editorial changes in other areas of the Bylaws where the Appointed Officers are listed or mentioned (such as Article III, Section 4.A.k describing the duties of the President to appoint certain officers and Article VI, which lists those invited to Executive Committee meetings).

IF ADOPTED, the new Article III, Section 4.F.5 would read: “5. Chaplain The duties of the Chaplain shall be: i. To give inspirational presentations and promote the good will of the members as requested by the President. ii. To compile a list of deceased members since the last Memorial Service and conduct a Memorial Service at the time and place designated by the President.” Corresponding editorial changes would be made in all other instances where the Appointed Officers are listed or mentioned.

RATIONALE: To include the Chaplain in the list of Appointed Officers and define her duties.

7. Amend Article III, Section 5.E to clarify the process for reimbursing Elected Officers for certain lodging and meal expenses for State Convention.

IF ADOPTED, Article III, Section 5.E would read: “The expenses of all elected officers for lodging (based on double occupancy, except the President) and planned meal functions incurred in attending the State Convention shall be paid from the Annual Meeting Treasury after all other expenses of the State Convention have been paid—~~by the federation as part of the Convention expense.~~ This does not include travel. If the receipts for State Convention are insufficient to pay all authorized lodging and meal expenses, any money that remains in the Annual Convention Treasury after all other State Convention expenses have been paid shall be used to reimburse the Elected Officers for these expenses on a pro rata basis until depleted. Officers may then submit any of these unreimbursed lodging and meal expenses to the Finance Committee for consideration as an unbudgeted expense.”

RATIONALE: To clarify the source of funding for these reimbursements.

8. Amend Article IX, Section 10.A to correct the total number of members on the State Headquarters Committee, given that there are now five Districts and not six.

IF ADOPTED, Article IX, Section 10.A (State Headquarters Committee) would read: “This Committee shall be composed of ~~eleven (11)~~ ten (10) members. The President, the President-elect and the Vice President shall be ex-officio members of this Committee. The remaining members shall be as follows: one from the State at large, one from the Jackson area, and one from each of the Districts.”

RATIONALE: To clarify the number of members on the State Headquarters Committee.

9. Amend Article IX, Section 10.D.2 to insert a reference to State law on the use of the State Headquarters building.

IF ADOPTED, Article IX, Section 10.D.2 (duties of the State Headquarters Committee) would read: “To have the rules governing the Headquarters published in the *Mississippi Clubwoman*. The establishment and/or revision of the rules shall be the responsibility of the Headquarters Committee. In accordance with State law, the State Headquarters building shall be used exclusively for the furtherance of the work of the GFWC-Mississippi Federation of Women’s Clubs. Therefore, it is the policy of this organization that the State Headquarters building may be used for functions of the GFWC-Mississippi Federation of Women’s Clubs at any time and may be used by federated clubs as provided in the Headquarters Rules. It shall not be rented or used by members of the general public. When requested, the Executive Committee may approve the use of the State Headquarters building by the State of Mississippi and by non-profit organizations with which the General Federation of Women’s Clubs has a formal partnership agreement. Any use of the State Headquarters building must comply with the applicable statute.”

RATIONALE: To document that the rules on the use of the State Headquarters building that are in compliance with State law.

10. Amend Article IX, Section 10.D to add subsection 4 to address the responsibility of the State Headquarters Committee regarding access to the State Headquarters building by individuals.

IF ADOPTED, Article IX, Sections 10.D.4 would read: “To have one member maintain a list of individuals receiving gate access and/or keys to the State Headquarters building for each administration and to collect keys and remote controls for the gate from the outgoing President and any other members at the end of each administration. She shall also document on the list that any outgoing occupants returned the keys/gate remotes and new occupants were issued a key/gate remote. The GFWC-Mississippi Federation of Women’s Clubs shall provide a key and a gate remote for the President; the State Headquarters Chairman; one member of the State Headquarters Committee, if designated by the State Headquarters Chairman; and, the State Headquarters occupant. Other members may be issued keys/gate remotes at their own expense, provided that prior approval is received from the Executive Committee.”

RATIONALE: To establish procedures for documenting and approving the individuals with access to the Headquarters Building from administration to administration.

11. Amend Article IX, Section 10.D to add subsections 5 to address the reporting of volunteer hours and other financial data to the State of Mississippi in payment of the State Headquarters lease.

IF ADOPTED, Article IX, Sections 10.D.5 would read: “The State Headquarters Chairman shall compile any data necessary for lease payments and submit it to the Executive Committee for approval. Upon approval by the Executive Committee, she shall submit this information to the State of Mississippi as required in the State Headquarters lease. She shall also provide a copy to the Treasurer, to be included in the regular financial records of the GFWC-Mississippi Federation of Women’s Clubs.”

RATIONALE: To establish procedures for documenting and approving submission of information to the State of Mississippi related to the State Headquarters lease and to provide for the retention of those records.

If adopted, these amendments shall take effect at the close of the 2016 State Convention.

“Volunteers are the only human beings on the face of the earth who reflect this nation’s compassion, unselfish caring, patience, and just plain loving one another.”
~Erma Bombeck

**2016 GFWC-MFWC
State Convention Program Ad Form**

The 2016 State Convention will be held April 28-30, 2016 in Cleveland, Mississippi.

When selling or buying an ad in the Convention Program, please complete the following information for each ad submitted.

Ad Size (check one)	Cost
<input type="checkbox"/> Full page (9.4" h x 6.9" w)	\$100
<input type="checkbox"/> ½ page (4.5" h x 6.8" w)	\$50
<input type="checkbox"/> ¼ page (4.5" h x 3.6" w)	\$30
<input type="checkbox"/> ⅛ page (2.28" h x 3.6" w)	\$20

Name of Company/Person purchasing the ad:

Amount Paid: \$

Name of Clubwoman selling the ad:

Phone: ()

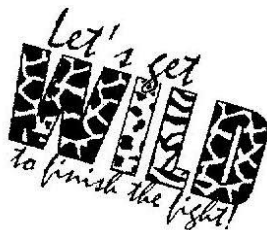
Email:

Club:

City:

Ordering Instructions:

- All ad information and payment should be submitted with this form.
- Ad (including GRAPHICS and PICTURES) should be *CAMERA READY in digital file format if at all possible.
- Make check(s) payable to: GFWC-MFWC 2016 State Convention and make note on the check(s) that it is for a convention ad.
- Mail check(s) and completed form to: Lisa A. Harris, 822 SCR 115 S, Raleigh, MS 39153. Email ad to laharris@hughes.net
- **Deadline -- (postmarked) April 17, 2016**



*Camera-ready in digital file format means that the ad is ready to be printed and was sent by email.

Bringing Hope – Changing Lives

**2016 GFWC
Annual Convention
“Charm City”
Baltimore, Maryland
June 25-29, 2016**

Room Reservation
Baltimore Marriott Waterfront
1-877-212-5752
Experience all of the “charms” of this vibrant city right at your footsteps.
<https://resweb.passkey.com/go/2016GFWCAnnualConvention>

Convention Registration Now Open!
For questions or assistance contact GFWC at 1-800-443-4392 or email Convention@GFWC.org. To register online, visit GFWC.org to find the link to the online registration site. All registrations must be submitted by June 1, 2016.

**SAVE the DATE!
GFWC
Southern Region
Conference
October 20-23, 2016
Jacksonville, Florida**

*Opportunities to network, learn, and laugh with ladies from Aruba, Alabama, Florida, Georgia, South Carolina, and Mississippi

*Support Mississippi's own Jo Anne Reid as she takes over the reigns of Southern Region leadership.

Of course, there will be
“Shopping...Shopping...
and more Shopping”

*****MFWC CLUBS IN ACTION*****



GFWC-MFWC Decatur Woman's Progressive Club members assemble items for the Operation Smile Bags.



GFWC-MFWC Decatur Woman's Progressive Club members serve at East MS Christmas Party.



GFWC-MFWC Decatur Woman's Progressive Club member Linda Guraedy sews an Operation Smile Gown.



GFWC-MFWC Decatur Woman's Progressive Club members present Youth Art Awards at Newton County Elementary School.

(Below and right)
GFWC-MFWC Raleigh Woman's Club celebrates 85th Club Anniversary.



*****MFWC CLUBS IN ACTION*****



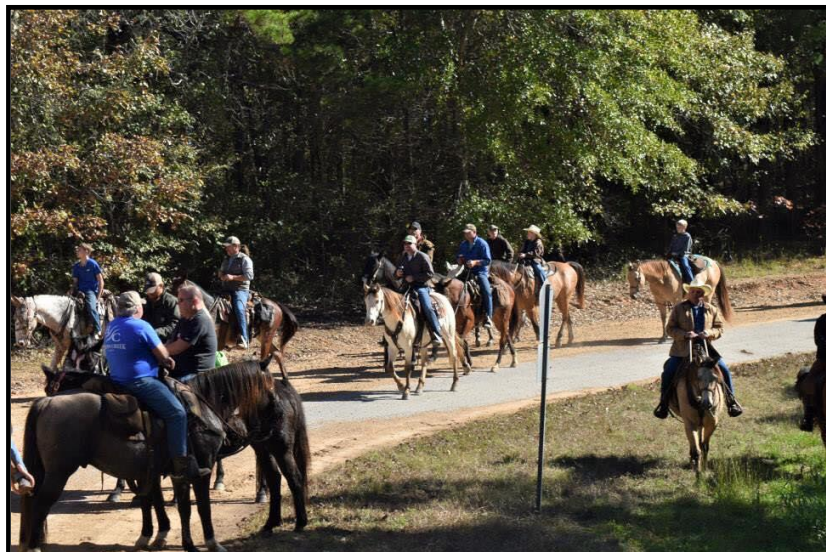
Raleigh Woman's Club held its December meeting at the GFWC-MFWC Headquarters.



President Darlene Adams receives donation of gift cards to President's Special Project from Juniorette Annah Katherine Kleinpeter at annual Juniorette Retreat.

(Right and Below) MFWC Cosmopolitan Club of Petal was named Champion of the Year by the Petal School District. The club was the lead float in the Homecoming parade and was presented with a plaque at halftime of the Homecoming game. A portrait of club members was taken to hang in the school district Central Office.





GFWC-MFWC Twentieth Century Club of Bruce hosts a Trail Ride to raise funds for the MFWC President's Special Project, American Cancer Society.



Twentieth Century Club of Bruce members work at Relay for Life Auction.



Twentieth Century Club of Bruce members walk as a team in the Calhoun County Relay for Life.



Bruce Fine Arts Juniores hold a Road Block with proceeds donated to the local Dog Lovers League.

*Nothing teaches hope, kindness,, courage, and
compassion like helping others!*

*****MFWC CLUBS IN ACTION*****



Bruce Fine Arts Juniorette member places medal on survivor before the Survivor Lap at the Calhoun County Relay for Life.



Bruce Fine Arts Juniores assist with local Easter Egg Hunt. One member was the Easter Bunny and a children's favorite.



Fine Arts Club of Bruce members assist with birthday party at local nursing home.



Fine Arts Club of Bruce members visit St. Jude Children's Hospital and donated toys collected at its annual Toy Drive .



Fine Arts Club of Bruce members helped decorate and served refreshments at Daddy-Daughter Dance that benefited St. Jude.



Fine Arts Club of Bruce members walk as a team in Calhoun County Relay for Life event.

*****MFWC CLUBS IN ACTION*****



Star Woman's Club emphasizes October as Domestic Violence Awareness Month and Breast Cancer Awareness Month with special decorations.



In observance of Read Across America Day, Star Woman's Club members visit a local classroom and helped with reading and refreshments.



In observance of Veterans Day, Star Woman's Club members provided and served a luncheon where local vets enjoyed a hot meal and friendship with other vets. Lunches were also delivered to vets who could not attend due to health issues.



Batesville Junior Woman's League members, their children, grandchildren, and Little Miss Batesville 2015 pose with a resident at Providence Assisted Living home after passing out Halloween treats to the residents.



The treasure, the set and BJWL members are all ready for the 38th annual Little Miss Batesville Pageant.



Batesville Junior Woman's League members take a break from passing out water and snacks to take a quick picture at the St. Jude Walkathon held in Batesville.

GFWC Southern Region Conference ~ October 22-25, 2015 Perdido Beach Resort, Orange Beach, Alabama



2014-2016 Southern Region Presidents including GFWC-MFWC President Darlene Adams (second from right) pose for "fun" photo at 2015 Conference.



2014-2016 GFWC International President Babs Condon (center) visits with Civic Woman's Club of Picayune member Nancy Griffin (left) and GFWC-MFWC President Darlene Adams (right).



GFWC-MFWC President Darlene Adams photobombs the Bruce girl's photo shoot.



GFWC-MFWC Past President Suzanne Poynor and Decatur Woman's Progressive Club members Theresa Buntyn and Jeanette Thrash visit at Southern Region Conference.



Mississippi Southern Region attendees gather for photo at Friday night Beach Night Dinner.



GFWC-Mississippi Delegation at Southern Region Banquet



2014-16 President-elect carries flag in opening processional.

GFWC Orientation Board Meeting ~ November 2015



MFWC members serving on the GFWC International Board attend 2016-2018 Orientation at GFWC Headquarters in Washington, DC



MFWC members attending GFWC Orientation pose for photo with GFWC President-elect Sheila Shea (left).



2014-2016 GFWC-MFWC President-elect poses for photo with 2014-2016 President-elect Sheila Shea.



2014-2016 GFWC-MFWC President Darlene Adams poses for photo with 2014-2016 GFWC International President Babs Condon.

*****Winter Board Meeting and Judging Day*****



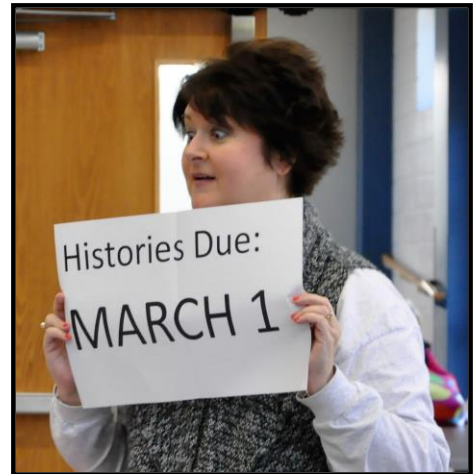
Jo Anne Reid, MFWC Fund Development Chair, presents winnings from the 50/50 at the MFWC Winter Board Meeting to Fine Arts Club of Waynesboro member Beth Herring. The fundraiser was called "Buy A String or Three" with special red, pink and silver Valentine beads.



State Program and Committee Chairs Melba Watkins, Annajeral Knight, and Jeannie Pittman take a break from judging reports to visit with Star LEADS Representative, Annette Ainsworth



GFWC-MFWC Past Presidents are being Photobombed at Winter Board/Judging Day.!

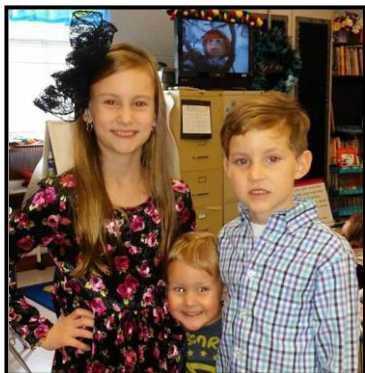


GFWC-MFWC Historian Susan Shurden encourages clubs to submit annual histories by the due date.

(Right) MFWC Home Life Chair Sue Addy and State Headquarters Committee Member Coreen VanDevender judge reports.



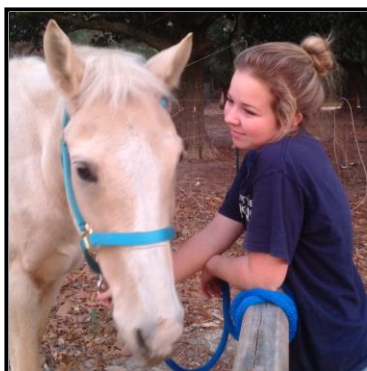
*****FUTURE CLUBWOMEN AND BOOSTERS*****



Grandchildren of GFWC-MFWC President Darlene C. Adams,
GFWC-MFWC Civic Woman's Club of Picayune



Daughter and special "friend daughter"
of GFWC-MFWC Juniorette Director
Brook McCarty, GFWC-MFWC Present
Day Club of Waynesboro



Daughter of Brook McCarty,
GFWC-MFWC Present Day
Club of Waynesboro



Great Granddaughter of Joyce
Stanley and Granddaughter of
Karen Thornton, GFWC-MFWC
Present Day Club of Waynesboro



Children and Grandchildren of Angi Tynes,
GFWC-MFWC Present Day Club of Waynesboro



Daughter (left) of Mandy Laiche and
daughter (right) of Renay Zumbro, GFWC-
MFWC Homochitto Heritage Club, Inc.

*****FUTURE CLUBWOMEN AND BOOSTERS*****



Granddaughters of Melba Watkins,
GFWC-MFWC Star Woman's Club



Grandchildren with
Grandmother Tammie McCoy,
MFWC Past President
Pontotoc Woman's Club



Grandson of
Chris Pasquale
GFWC-MFWC Twentieth
Century Club of Bruce



Granddaughter of
Carolyn Huey, MFWC Past President
GFWC-MFWC Decatur Woman's
Progressive Club



Granddaughter of
Carolyn Huey, MFWC Past President
GFWC-MFWC Decatur Woman's
Progressive Club



Grandson of
Carolyn Huey, MFWC Past President
GFWC-MFWC Decatur Woman's
Progressive Club



Grandson of
Carolyn Huey, MFWC Past President
GFWC-MFWC Decatur Woman's
Progressive Club

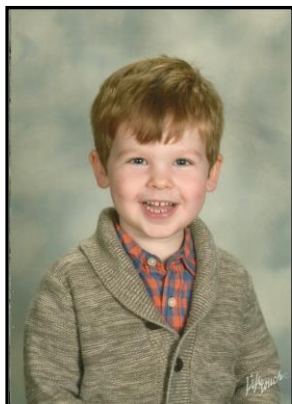


Granddaughter of
Carolyn Huey, MFWC Past President
GFWC-MFWC Decatur Woman's
Progressive Club

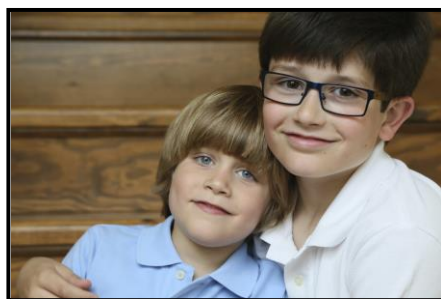
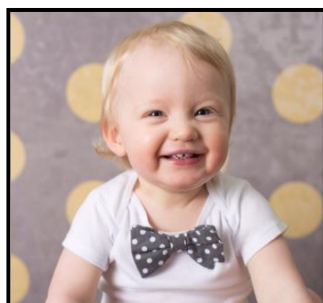


Grandchildren of
Carolyn Huey, MFWC Past President
GFWC-MFWC Decatur Woman's
Progressive Club

*****FUTURE CLUBWOMEN AND BOOSTERS*****



(Above and Left)
Children, Grandchildren
and Great Grandchildren
of Libby Everett,
GFWC-MFWC
Cosmopolitan Club of
Petal.



Grandchildren of Annette Ruth,
GFWC-MFWC Twentieth Century Club of Bruce



Granddaughter of Diane Rouse
Florentine Evening Club



Son and Grandson of Diane Rouse
Florentine Evening Club

*****FUTURE CLUBWOMEN AND BOOSTERS*****



Daughters of Deana Pittman,
Batesville Junior Woman's League



Children of Christi Stacy
GFWC-MFWC Fine Arts Club of Bruce



Sons of Judy Martin,
MFWC Past President
GFWC-MFWC Raleigh Woman's Club



Son of Bethany Davis and
Grandson of Jeanne Cole,
GFWC-MFWC Fine Arts
Club of Bruce



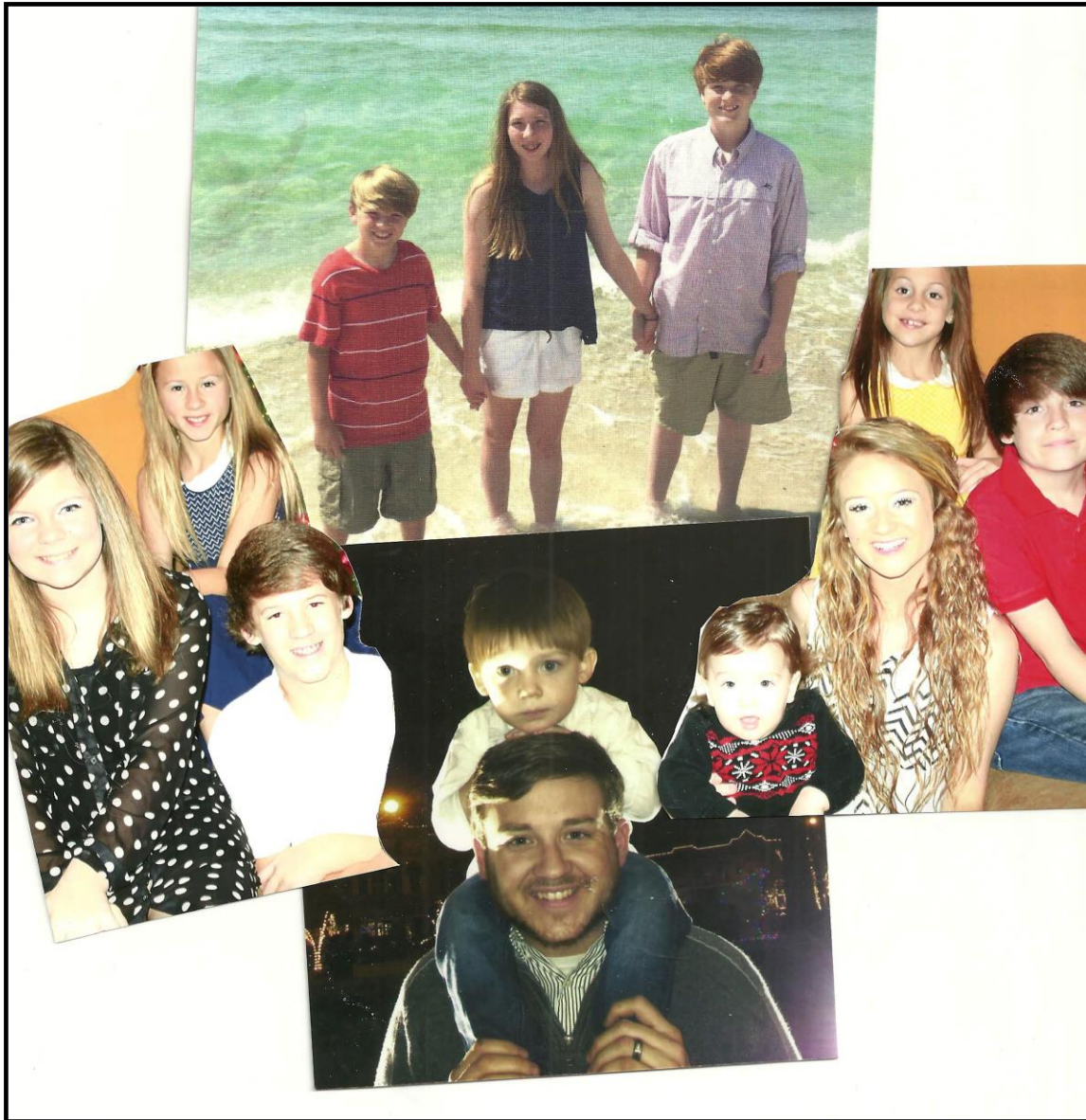
Daughter and Son of Ellen Shaw
and Grandchildren of Paula
Jeffery, GFWC-MFWC Fine Arts
Club of Bruce



Grandchildren of Sandra Cain, GFWC-MFWC Fine Arts Club of Bruce



Daughters of Tonya Camp,
GFWC-MFWC Fine Arts Club
of Bruce



Grandchildren and Great Grandchild of Dee Payne, GFWC-MFWC Florentine Evening Club, Florence

~ GFWC-MFWC ~
A Proud Past
and a
Promising Future