



# The Heartbeat

Do something today that your future self will thank you for!

Plant ► Recycle ► Pick It Up!

PLANT ► RECYCLE ► PICK IT UP



February 2021

Volume XII Issue I

## THE EARTH IS NOT YOUR DUMPSTER



## DON'T BE A LITTERBUG



The mission of the GFWC-Mississippi Federation of Women's Clubs, Inc. is an organization of women whose goal is personal enrichment leading to volunteer service that benefits the community, state, nation and world.



Founded on May 25, 1898 and a member of the General Federation of Women's Clubs Since 1904.

# **GFWC-MFWC Headquarters & Elected Officers**



**GFWC-MFWC Headquarters  
2407 North State Street  
Jackson, Mississippi 39216**

## **2020-2022 Elected Officers**

**Sherri E. Reid  
President  
Cosmopolitan Club  
Southern District**

**Carolyn Tedford  
Vice President and Dean of Chairmen  
Poplarville Woman's Club  
Southern District**

---

**Theresa H. Buntyn  
President-elect,  
Advisor to District Presidents  
and State Membership Chairman  
GFWC-MFWC Decatur Woman's Progressive  
Club  
Central District**

---

**Deana T. Pittman  
Secretary  
GFWC-MFWC Batesville Woman's Club  
Northern District**

**Belinda Peacher  
Treasurer  
GFWC-MFWC Florentine Evening Club  
Central District**

## In This Issue



GFWC-MFWC Headquarters & Elected Officers	2
A Message from Your State President Sherri E. Reid	4
Exploring Our Roots	5
Membership	6
Official Calls to District Conventions	8
In Case You Missed It (ICYMI)	11
A Brief History of Mississippi Libraries	13
Littering Statistics in America	15
Don't Trash Mississippi - MS Litter Stats	16
Jennie Award Nominations	17
Sesame Street in Communities	18
Important Dates	19
Save the Date	20
 General Federation of Women's Club Latest News	
GFWC News	22
Support GFWC	25

The GFWC-MFWC Newsletter "The Heartbeat" is published by the GFWC-MFWC. All submissions are welcome. Photographs are encouraged. Mail articles and/or photographs to Lisa A. Harris, 822 SCR 115 S, Raleigh, MS 39153 or email to [lisaharris@outlook.com](mailto:lisaharris@outlook.com). Questions or comments, contact Lisa at (601) 940-1519.

# A Message From Sherri E. Reid

Greetings Club Members of MFWC!

I am very excited for you to see and enjoy this month's Heartbeat newsletter. Lisa Harris has outdone herself by picking out my favorite things to share with you! Books, Libraries and Litter...or picking up litter.

Although I love trees and recycling, litter has become very important in my day. If you are in Petal you may see my car stop at any given moment on the side of the road to pick up litter. If you are shopping with me, I may not walk directly to my car but through the other side of the parking lot to pick up someone's leftover Styrofoam box of dinner left there for the birds or rodents to forage through?!

I hope that through everything we learn and experience the next year 2 months that we gain insight into the world we live in and how to preserve it for generations. I hope each of you will become passionate about sustaining our world.

As you continue through this newsletter Theresa Buntyn's heartfelt letter is full of awesome news, regarding our membership. As we are sad of the decline of club members, we can also rejoice in the plan of action coming from GFWC and being implemented by Theresa and our members throughout the state. I know we have a plan and we will grow our members.

Get those elevator speeches out and talk to everyone you meet about the great club and federation you belong to. If we talk about all the great projects and programs, we stand for, why would any likeminded person not want to be a member of your club or MFWC? Thank you for all each of you do for our organization and continue to do. We are GFWC and proud!

Do something today that your future self will thank you for!!

In federation service,  
Sherri

Plant  Recycle  Pick It Up



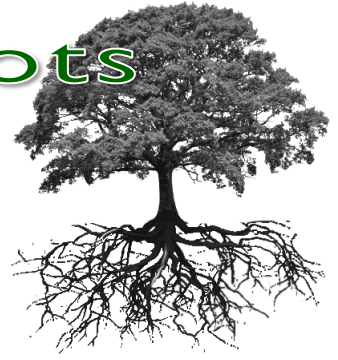


# Exploring Our Roots

## "A History of the Mississippi Federation of Women's Clubs"

Administration of Mrs. E. B. (Gladys) Nash

1938 - 1940



🌳 Twentieth-first President of the MFWC from Indianola, MS.

🌳 The theme of her administration was, "Investing in the Future."

### Highlights of this Administration

- Mrs. Nash at the time of installation as the twentieth-first MFWC President was the youngest state president in the history of the General Federation.
- Highlights from the forty first annual convention of the MFWC held in Tupelo, MS on October 31 - November 2, 1939 with Mrs. E. B. Nash presiding.
  - At this convention, the MFWC was comprised of two hundred forty-five clubs and a membership of 5,877. An increase of ten new clubs and two hundred one new members was reported.
  - All of the departments reported at this convention on the club work throughout the state.
    - ◆ Of particular note was the work of the International Relations Department. Mississippi had received national recognition by placing second in the General Federation in Essay, Panel Discussion and One-Act Play Contest.
    - ◆ The Education Department reported that many districts were now awarding college scholarships in addition to the Hebron Memorial Scholarship which the MFWC supported.
    - ◆ The Child Welfare Committee reported on preschool clinics, free dental work for the needy, funding for health nurses and providing free lunches for needy children.
    - ◆ One project of the Conservation Committee was to make the study of conservation compulsory in the schools.
  - The Federation recommended the extension of library services and the employment of trained librarians. By working with the Legislature, clubs helped secure funds for the operation of the state Library Commission.
- Highlights from the forty second annual convention of the MFWC which was held in Jackson, MS in November 1940 with Mrs. Nash presiding.
  - This convention featured a Golden Jubilee Celebration of the organization of the General Federation of Women's Clubs.
  - A number of resolutions resulted from this convention. They included endorsement of the Library Legislative Program of 1940, which called for increased support for the Library Commission, state aid and certification of librarians; urging support of an appropriations bill to support alcohol education; urging passage of a bill to eliminate billboards from state highways; endorsement of a movement devoted to improving all state libraries; and the promotion of the use of more products, calling for a cotton Christmas.

*Source: "A History of the Mississippi Federation of Women's Clubs 1898-1998" by Tommye Hogue Rosenbaum, 1998, Commemorating The Centennial of the Mississippi Federation. Published by the GFWC Mississippi Federation of Women's Clubs, Inc., 2407 North State Street, Jackson, MS 39216. Copyright 1998 by Tommye Hogue Rosenbaum for the Mississippi Federation of Women's Clubs, ISBN: 0-935515-32-1.*

# Membership

Message from GFWC-MFWC President-elect Theresa H. Buntyn



Greetings club ladies. First of all, I would like to express my gratitude to our volunteers across the state that have continued to serve your community and help others during this last year's pandemic. It has been a very challenging year, to say the least, for our club ladies, families, towns, communities, businesses and friends. The words normal or usual were seldom used during the last year. We have lost loved ones in our clubs, families and community. Broken hearts, sorrows, fear, fatigue, political unrest and isolation has made a major impact across our state and nation. I was reminded yesterday of a quote from Martin Luther King Jr., "If you can't fly then run, if you can't run then walk, if you can't walk then crawl, but whatever you do you have to keep moving forward."

To remain resilient in our clubs and communities we have to continue to move forward. It's been great to see the strong response, clubs have shown by pursuing opportunities as quickly as they are revealed. Many clubs have shown some outside the box thinking with meetings. Our club meetings now have a different look. Ladies spread out in larger areas, wearing mask and ensure food is individually packed. Many of our clubs have embraced technology and are meeting by zoom or Facebook live. There are clubs that have drive-by meetings which have proven successful. Our clubs planted trees, recycled and picked up litter. Clubs members supported domestic violence, public issues, legislative events, sewed mask, bought groceries, provided individual wrapped meals and so many other acts of service.

Our GFWC Mississippi is a wonderful organization whose beauty is magnified by unity and diversity. Shelli Fehr, GFWC Membership Committee Member in the GFWC January newsletter reminded us "Building Membership Connections Is an Ongoing Effort"

Fehr reminded us that now more than ever, it is important for clubs to strengthen connections with seasoned members and build them with new ones. Connections to GFWC and clubs will be strengthened if the following are practiced. Additional comments are added in italics for our Mississippi clubs.

1. Connection through communication. The number one way to keep members engaged is communication. *Communication can be written, verbal, remote, or in-person, and it must be appropriate for the member, Facebook, twitter, iPhone, tablets or onsite social distancing.*
2. Connection through club occasions. Events should be frequent, planned, and conveyed to all members.

*Even though meeting may look different our clubs still need to support our programs; Adopt a Highway, I Support the Girls, Youth Art virtual exhibits, Heart health programs, supporting cancer patients and so many other events.*

3. Connection through crafty introductions. Allow time for members to talk about themselves at each meeting and submit a short bio and photo for the newsletter or Facebook page. This leadership technique also puts a face to a name. Share events or *members serving on Facebook and twitter. Remember to mention the name of the member and the club name.*



(Continued on page 7)

## GFWC Advancement Plan - Membership

(Continued from page 6)

4. Connection through caring. Remember shut-ins or non-active members with a gift, card, or call. *Call or contact our club members that have been isolated or with no family due to risk of travel in the pandemic.*
5. Connection through creative contributions. Ask for member suggestions at each meeting. Remember, we are all learning as we go! *Club Presidents check the temperature on your members. Listen to their ideas or suggestions.*



December, January, and February  
**MENTORING**  
**"BUILDING the CONNECTION"**  
 Report due March 1



March, April, and May  
**RECOGNITION**  
**"CELEBRATING THE VICTORIES"**  
 Report due June 1

It is not too late for clubs to participate in **GFWC'S "HATS OFF TO MEMBERSHIP" RECRUITMENT CAMPAIGN**. This is a year-round process with a focus on new members. Clubs can plan creative membership recruitment campaigns and events around the many national Awareness issues and commemoration days that are aligned with GFWC Special Programs and Community Service Programs. The possibilities are endless when we look for diversity.

I encourage all of our Mississippi clubs to be reminded of what a great volunteer organization MFWC is and the great volunteer work that we do in our communities.

Even though the last year was a tough challenge, I call on you, as well as myself, to remember "the heart of a volunteer is not measured by size, but by the depth of the commitment to make a difference in the lives of others." One member can truly make a difference in your club and the lives of others.

Please do not hesitate to email me at [mfwctab@gmail.com](mailto:mfwctab@gmail.com) or call me 601-562-6547 with any questions.

In Federation Love,  
 Theresa Buntyn  
 GFWC-MFWC President-elect

The Value of One Member

*Ten little members* standing in line  
 One disliked the President, then there were nine.  
*nine ambitious members* offered to work late  
 One forgot her promise, then there were eight.  
*eight creative members* had ideas good as heaven  
 One lost enthusiasm, then there were seven.  
*seven loyal members* got into a fix  
 They quarreled over programs, then there were six.  
*six members remained*, with spirit and drive  
 But one moved away, then there were five.  
*one became indifferent*, then there were four.  
*four cheerful members* who never disagree  
 'Till one complained of meetings, then there were three.  
*three eager members*...what do they do?  
 One got discouragement, then there were two.  
*two lovely members*, our rhyme is nearly done  
 One joined a bridge club, *then there was one*.  
 One faithful member was feeling rather blue  
 Met with a neighbor, *then there were two*.  
 Two earnest members each enrolled one more  
 Doubled their number, *then there were four*.  
 Four determined members just could not wait  
 'Til each won another, *then there were eight*.  
 Eight excited members signed up sixteen more  
 In another six verses, there will be a  
**"Thousand-twenty-four"**



# GFWC Advancement Plan - Leadership



Log on to Zoom  
Central District 2021 Convention

8:50 a.m.  
9:00 a.m.

- Club President (General & Juniorette) should mail or email a copy of their two-minute report about their club's 2020 activities to Lisa A. Harris at 822 SCR 115 S, Raleigh, MS 39152 or lisaharris@outlook.com by Monday, March 1, 2021.
- Please send the name, biographical information and picture of any club member who has passed away since our 2020 convention to Jackie Etie, 1023 Fifth Street, Decatur, MS 39327 or jackie@clarkevenable.com by Monday, March 1, 2021.
- Send your Walmart or Sam's gift cards for HOBY snacks to Belinda Peacher at 2339 Tiffany Circle Florence, MS 39073.
- In lieu of a registration fee, please send donations to Belinda Peacher at 2339 Tiffany Circle Florence, MS 39073. Make checks payable to MFWC. In the memo box, please indicate that the donation is to help defray the cost of the 2021 State Convention.



## Central District Convention Registration Form

Postmark deadline: March 1, 2021



Mail registration form to Lisa A. Harris at 822 SCR 115 S, Raleigh, MS 39152 or lisaharris@outlook.com.

Name: \_\_\_\_\_ Club: \_\_\_\_\_

Address: \_\_\_\_\_ Phone No: \_\_\_\_\_

Check One: ☐ Club President ☐ Club Delegate\* ☐ Club Member

☐ District Officer ☐ District Chairman Title: \_\_\_\_\_

☐ State Officer ☐ State Chairman Title: \_\_\_\_\_

\*Please check bylaws for the number of voting delegates that your club may have.

Do Something Today That Your Future Self Will Thank You For! - Plant ♻️ Recycle ♻️ Pick It Up ♻️





# FOOD FOR THOUGHT: HUNGRY TO SEE EVERYONE AGAIN!

GFWC-MISSISSIPPI  
106<sup>TH</sup> ANNUAL SOUTHERN DISTRICT CONVENTION  
SECOND ANNUAL ZOOM CONVENTION  
(AND HOPEFULLY, THE LAST!)  
OFFICIAL CALL  
SATURDAY, MARCH 20<sup>TH</sup>, 2021  
10:00 a.m. - 12:30 p.m.

- Zoom Invitation Link will be sent to each District Club President, the GFWC-Mississippi Executive Board, and the Southern District Executive Board. Please share this information with your clubmembers.
- See the attached document for Youth Art, Youth Art Challenge, Mississippi Crafts and GFWC Photography Contest information.
- Club Presidents (General and Juniorette) will give a brief two minute (or less) summary of 2020 club activities after Roll Call. Please send a copy of your President's Report to Secretary Connie Johnston at [connie.johnston01@gmail.com](mailto:connie.johnston01@gmail.com) and to Historian Leahne B. Lightsey at [Leahne.lightsey@petalschools.com](mailto:Leahne.lightsey@petalschools.com).
- Club Presidents will send the name, picture, biography of any member who has passed away since our last Convention to Chaplain Penny Barr at [pennybarr88@gmail.com](mailto:pennybarr88@gmail.com) for the Memorial Service.
- Send your Walmart or Sam's gift cards for HOBY snacks to Belinda Peacher at 2339 Tiffany Circle Florence, MS 39073.
- In lieu of a registration fee, please send donations to Belinda Peacher at 2339 Tiffany Circle Florence, MS 39073. Make checks payable to MFWC. In the memo box, please indicate that the donation be given to the President Reid's President's Special Project (Heifer International) or for State Convention (to help defray costs).

**Please plan to attend and enjoy fellowship with your Southern District sisters.**



## Southern District Convention Registration Form

RSVP Postmark deadline: March 13, 2021,  
(Sorry, NO REFUNDS.)



Mail registration form to Meri F. Newell, 533 Leeville Road, Petal, MS 39465 or email to [newellmf57@gmail.com](mailto:newellmf57@gmail.com).

Name: \_\_\_\_\_ Club: \_\_\_\_\_

Address: \_\_\_\_\_ Phone No: \_\_\_\_\_

Check One: ☐ Club President ☐ Club Delegate\* ☐ Club Member

☐ District Officer ☐ District Chairman Title: \_\_\_\_\_

☐ State Officer ☐ State Chairman Title: \_\_\_\_\_

\*Please check bylaws for the number of voting delegates that your club may have.

# GFWC Advancement Plan - Leadership



## OFFICIAL CALL

GFWC-MFWC Northern District

One Hundred Sixth Annual Convention  
Saturday, March 13, 2021

Zoom Video Conferencing



Log on to Zoom  
Northern District 2021 Convention

9:50 a.m.  
10:00 a.m.

- Club President (General & Juniorette) should mail or email a copy of their two-minute report about their club's 2020 activities to Secretary Sue Vance @shvance94@yahoo.com and Historian Misty Wright @misty\_merie@yahoo.com.
- Please send the name, biographical information and picture of any club member who has passed away since our 2020 convention to Cassie Ferguson, 108 Circle Drive, Bruce, MS 38915 or cassiefbryant@yahoo.com by Saturday, March 6, 2021.
- Send your Walmart or Sam's gift cards for HOBY snacks to Belinda Peacher at 2339 Tiffany Circle Florence, MS 39073.
- In lieu of a registration fee, please send donations to Belinda Peacher at 2339 Tiffany Circle Florence, MS 39073. Make checks payable to MFWC. In the memo box, please indicate that the donation is to help defray the cost of the State Convention or to President Reid's President Special Project.



## Northern District Convention Registration Form

Postmark deadline: March 6, 2021



Mail registration form to Lisa McGee, 1321 CR 20, Houlika, MS 38850 or email to lm.barefield@gmail.com

Name: \_\_\_\_\_ Club: \_\_\_\_\_

Address: \_\_\_\_\_ Phone No: \_\_\_\_\_

Check One: ☐ Club President ☐ Club Delegate\* ☐ Club Member

☐ District Officer ☐ District Chairman Title: \_\_\_\_\_

☐ State Officer ☐ State Chairman Title: \_\_\_\_\_

\*Please check bylaws for the number of voting delegates that your club may have.

Do Something Today That Your Future Self Will Thank You For! - Plant ♻️ Recycle ♻️ Pick It Up ♻️





# In Case You Missed It (ICYMI)

Source: GFWC News & Notes, February 4, 2021

## Volunteers in Action

This week's GFWC Blog features the GFWC Cosmopolitan Club of Petal (Mississippi). See article below.


## GFWC Cosmopolitan Club of Petal (Mississippi)

Members of the Education and Libraries Committee with the GFWC Cosmopolitan Club of Petal (Mississippi) helped develop a lending library called “Rinse and Read” at a local laundromat in Petal. The library was made out of a re-purposed newspaper dispenser, which was purchased from a vintage store and transformed by the Petal School District maintenance department. A shelf was added to fit inside and it was filled with children’s books. The collection includes both Spanish and English books to reach the growing Hispanic communities in the area and school district. Club members began collecting the books early last year.



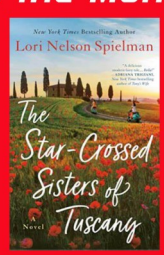
Children are encouraged to return the books to the lending library, and books will be replenished or repaired each month as needed. A sticker also will be adhered inside each book with information about the importance of reading and visiting the public library for more books.

The “Rinse and Read” project was made possible by a partnership between the GFWC Cosmopolitan Club of Petal and Excel By 5, an early education program that promotes early childhood education, resources, and parent education.



## ΕΣΟ Reading with the President Challenge


### February 2021 Selection of the Month



*The Star-Crossed Sisters of Tuscany*  
by Lori Nelson Spielman


Category:  
Fiction, General or  
Travel and Geography

PLANT • RECYCLE • PICK IT UP



“I do believe  
something very magical  
can happen when you  
read a good book.”

-J.K. Rowling



Good  
Reading

# In Case You Missed It (ICYMI)

Source: GFWC News & Notes, February 4, 2021

## State President's Project: Sherri Reid, Mississippi



The theme for GFWC Mississippi State President Sherri Reid's special project is: *Do something today that your future self will thank you for! Plant – Recycle – Pick It Up!*

As a youngster, President Reid spent a lot of time outside with her father experiencing nature and reading while leaning against trees. She always enjoyed the trees in particular, and her dad taught her early on the names of the trees native to Mississippi in the woods surrounding their property.

"He taught me to identify them by the bark, the fruit, and the shape of the leaves. He taught me everything about the trees," she said. President Reid assumed everyone had that same knowledge, but learned not everyone grew up in the middle of the forest.

Throughout the years, this appreciation for woodlands fostered an awareness of the way the world is treated. Trees convert carbon dioxide into oxygen; they provide habitats and food for animals and much more. More trees need to be planted to enhance the world for the future.

President Reid believes seeing waterways, woods, and roads littered with trash—trash that is purposefully left by someone—is offensive. She hopes during the rest of her Administration people will learn about these habitats and keep areas clean by picking up bottles, plastic, paper plates, cigarette butts, and food containers. Instead of filling landfills with "stuff" that doesn't break down, everyone can recycle and upcycle to make the world a better place.

Clubs in Mississippi are doing something that will make a difference! Members are planting trees for all occasions, being creative with recycling and upcycling in their communities, adopting highways, and keeping streets picked up. President Reid asks that everyone does something their future selves will thank them for and *Plant – Recycle – Pick It Up!*



# A Brief History of Mississippi Libraries

**Source:** A Brief History of Mississippi Libraries | Directors' Resource Guide ([directorguide.lib.ms.us](http://directorguide.lib.ms.us))

As with many states, the first libraries in Mississippi were those of the private citizens. These were in no way considered “public.” In 1818 (when Mississippi was a new state) the Mississippi Literary and Library Company of Gibson-Port was chartered as a subscription library. This was the first organization in Mississippi to be called a “library.” Located in Yazoo City, the Manchester Library Association, chartered in 1840, offered a circulating collection to members. Between 1900 and 1919 citizen groups formed public libraries in Hazlehurst, Brookhaven, Columbia, Greenville, Port Gibson, and Laurel.

## Development of Public Libraries in Mississippi

In 1926, 83 percent of the state was still without free library service. By 1970, all 82 counties in Mississippi were supporting, to some degree, free county-wide library service. The following are significant steps in the development of public libraries in Mississippi:

- **Carnegie Libraries** (1908 -1916) Mississippi, like many other states, benefited from the philanthropy of Andrew Carnegie. The Carnegie Foundation gave more than \$185,500 to establish libraries in Mississippi. Eleven public library buildings were erected in ten communities across the state in eight years. Libraries were built in Houston, Mound Bayou (which never functioned as a library), Meridian, (a main branch and a Negro branch were created), Greenwood, Clarksdale, Jackson, West Point, Okolona, Vicksburg, and Gulfport. Today only Clarksdale, Houston and Okolona utilize the Carnegie buildings as libraries.
- **Federation of Women’s Clubs** (1925 -1975) Without the support and steadfast resolve of the women in the various women’s clubs in Mississippi, public libraries would have taken a back row seat to many other community projects. However, in 1925, the state federation of women’s clubs determined to ask for library service in every county in the state. In 1926 the Mississippi Library Commission was established and adopted the same goal as the women’s clubs. It would take more than 50 years to accomplish this goal.
- **Emergency Relief Act (ERA)** (1933) Although Mississippi and the country suffered through the Great Depression, several good things resulted. One was the ERA funds that helped to establish libraries in Liberty, Pike County, and Walthall County.
- **Works Progress Library Project (WPA)** (1934 -1935) In 1934, the WPA Library Project also helped provide jobs for the unemployed and also established library service for the first time in six areas: Bay St. Louis, New Albany, Noxubee County, Pontotoc, Sunflower County, and Winston County. Funds from this project reinvigorated the public libraries already established in Attala County, Bolivar County, Greenville, Holmes County, Leake County, Marshall County, Natchez, Port Gibson, and Yazoo City. In 1935, with the additional aid of WPA and community groups, libraries were established in DeSoto County, Long Beach, Osyka, Aberdeen, Batesville, Lee County, Meridian, Montgomery County, and Oktibbeha County.



**February is Library Lover's Month**

(Continued on page 14)

## GFWC Education and Libraries CSP

(Continued from page 13 - A Brief History of Mississippi Libraries)

- **World War II** (1939-1945) Until the outbreak of World War II, the development of libraries in Mississippi was well underway. During the war, some were forced to close; others had little development; and no new libraries were established.
- **State Aid** (1948-present) Public libraries continued to struggle with funding from local sources. In 1950 the Legislature passed a law allowing the counties to levy a one mill tax for library support. With the passage of \$45,000 for “state aid for libraries” in 1948, legislators recognized the need for assistance from the state level. In 1969 the Legislature adopted a unique state aid program – the Personnel Incentive Grant Program. The purpose was to upgrade public library personnel and bring salaries in line with salaries in other Southern states. In 1988 the program became a block grant distributed per county/per capita basis to accredited public library systems. In 2004 more than \$5.2 million in the Personnel Incentive Grant Program and an additional \$3 million for health and life insurance for public library employees was distributed to qualified public library systems.
- **Multi-County Library Systems** (1950-present) The establishment of the original multi-county library system in the state occurred with the formation of First Regional Library in 1950. By 1973 there were 16 multi-county public library systems in the state and by 1998 there were 18.
- **Federal Aid** (1956-present) Libraries in Mississippi also benefited from the Library Services Act, passed by Congress in 1956, which has evolved over the years. By 2004, the Library Services and Technology Act grant program generated more than \$1.6 million in direct and indirect benefits.
- **Gates Library Foundation** (1998-present) In 1998, all public libraries were offered computers and software under a statewide grant according to the needs of the local public service area. Gates returned a couple of years later with a training grant that was used to develop an intensive, multi-tiered program designed to offer appropriate, convenient, no-cost technology training for public library personnel.
- **MAGNOLIA** (1997-present) In 1997 the Mississippi Legislature funded Mississippi Alliance for Gaining New Opportunities Through Library Information Access (MAGNOLIA), a statewide online database consortium for all publicly funded libraries, schools, universities, colleges, and state agencies. MAGNOLIA was the first consortium of its kind to provide online database access to an entire state and remains supported by the Legislature.

## Discover Mississippi history and culture from partners all across the state.

The Mississippi Digital Library is the collaborative digital library for the state of Mississippi. Their mission is to provide an online space to search and explore Mississippi’s rich abundance of cultural and historical resources held by institutions and repositories all across the state. Emphasizing collection building and discoverability, their goal is to help our partners build sustainable, high-quality digital collections and deliver those materials to the researchers. They are committed to providing free open access to these digital collections.

Made up of over 40 institutions, our partners include archives, historical societies, museums, public libraries, academic libraries and more. **Partnership and searching the collections are always free!**

See what Mississippi has to offer. [Search the collections.](#)

# Littering Statistic in America

**Source: 11 Littering Statistics in America, published May 28, 2017 by Brandon Gaille**

Did you know that the annual cost of picking up litter is over \$11 billion dollars? Littering is something that many people admit to doing when they are in a rush, but the impact of that decision to litter is often not realized. The trash that you could be leaving out in nature could be catching up with you right now!

## LITTERING FACTS

Nearly 50% of all littering is from cigarette butts. Think about all the chemicals that are in a cigarette. Now think about what the purpose of the filter on a cigarette does – it removes the worst of the worst of the cigarette so it doesn't go into your body. Then this remaining filter is flicked onto the ground where these compounds can leak into the dirt, the ground water, and even our rivers and streams!

## HOW MUCH LITTER DOES THE WORLD PRODUCE?

1. In the last year alone, 9 billion tons of litter was dumped into the world's oceans.
2. 75% of people, when surveyed, admitted that they littered at least once within the last 5 years.
3. The average amount of steps it takes for someone to find a piece of litter on the ground is just 12. That's right – every 12 steps outside, you'll find a piece of trash.

**Takeaway:** A lot has been said about climate change, but not a lot has been said about littering. If we allow our trash to pile up, we're going to destroy our local eco-systems just as quickly, if not more quickly than climate change can. That's why it is so important to pack out what you pack in... or to dispose of some litter when you come across it. Most importantly, however, just don't litter in the first place!

## OTHER SOBERING LITTER STATISTICS

1. Fast food products account for a full third of all litter that is produced around the world. That

includes the food itself and the packaging materials.

2. Paper products account for 29% of the world's litter, a product which quite often is fully recyclable.
3. It takes a cigarette butt 12 years to full decompose. On the other hand, it takes a banana peel just 12 days to do so.
4. 95% of farmers today have at some point had to clear litter off of their farmlands that they themselves did not produce.
5. 98% of the fulmars in the North Sea, a seabird, have plastic within their digestive tracts.
6. It is not uncommon for turtles to eat plastic bags that have been discarded into the water because they look like jellyfish.
7. Nearly 100 billion plastic bags are used in the United States alone and a discarded plastic bag can take up to 1,000 years on estimate to decompose.
8. 75% of people admit to littering in some form last year.

**Takeaway:** It's up to us to take care of our planet. The animals, the plants, and yes, even ourselves require our responsible management of nature so that it can be preserved for the generations to come. Without litter management, we may not even have a planet left in a few generations... or if we do, we'll be spending a vast fortune to clean up the messes we've made.

**Be part of the solution,  
not the pollution.**



# Don't Trash Mississippi - MS Litter Stats

**Source:** Mississippi Department of Transportation website: [MS Litter Stats - Don't Trash Mississippi](#).

## What is litter composed of?

U.S. surveys have found half of all litter is of deliberate origin, consisting mainly of convenience packaging and products. The other half of litter is of accidental origin, resulting from uncovered trucks, unsecured loads, loss of vehicle parts, trash can spills and simple human carelessness.

## Who is responsible for the litter on our roadways?

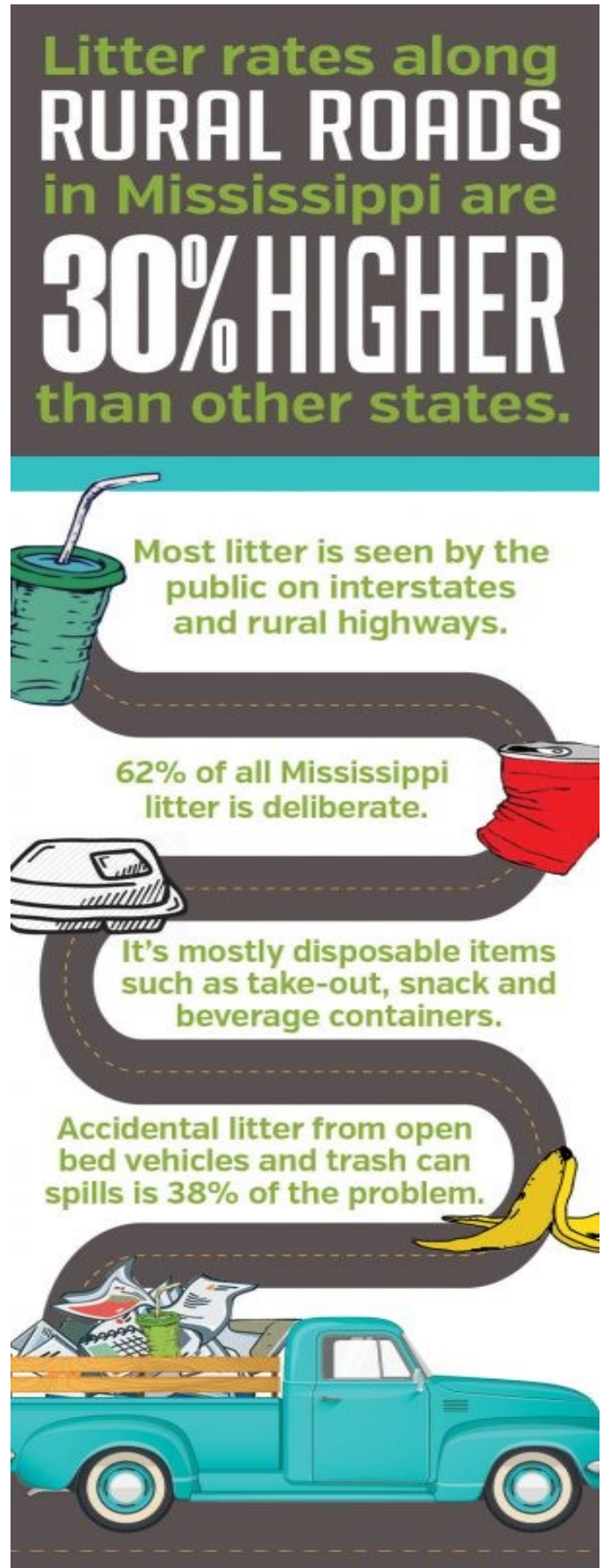
Statewide, males have been found to be responsible for 72 percent of all deliberate littering and 89 percent of all accidental littering. Male motorists driving pickup trucks are a disproportionate source of litter. This group is responsible for almost one-third of all littering by motorists and two-thirds of the escaping single items from vehicles.

## LITTER IS EVERYBODY'S PROBLEM.

It costs money to clean up litter – lots of it. MDOT spends over \$3 million a year picking up litter along Mississippi roadways – not counting the costs of decreased property values, decreased commerce and tourism and health risks. This money could be used to build and maintain roads and bridges.

Here are some surprising litter statistics about Mississippi:

- In 2016, there were 50,960 cubic yards of litter removed from Mississippi highways. This much trash could:
  - Fill up the Lincoln Memorial Reflecting Pool one and a half times; or,
  - Fill up seven Goodyear Blimps; or,
  - Fill up three-fifths of Spaceship Earth at EPCOT Center.
- Put another way, 8,910 tons of trash were removed from Mississippi highways. That is:
  - Almost as heavy as the Eiffel Tower which weighs 11,100 tons; or,
  - One-third as heavy as the Statue of Liberty which weighs 28,000 tons.
- In 2016, MDOT employees spent 30,526 hours picking up trash on the side of the road. That equals almost three and a half years!





## GFWC-Mississippi Federation of Women's Clubs, Inc



Sherri E. Reid, 2020-2022 President

**Date:** Thursday, January 28, 2021**To:** GFWC-MFWC Executive Board and Club Presidents**FROM:** GFWC-MFWC Jeannie Award Chairman Frances H. Brown**CC:** GFWC-MFWC President Sherri E. Reid**RE:** Reminder for Jennie Award Nomination

Once each administration we have the opportunity to honor that special lady in your club who always goes the extra mile as a volunteer in her club, community, and family or extended family. The GFWC Jennie Award is the only national honor that recognizes members for personal excellence. Club members are nominated by their clubs to compete at state, regional, and national levels for the Federation's highest honor.

The nominee should have an outstanding record of success and achievement in her club, her role in a leadership position, her effort to build membership and promote the club to others, and her overall spirit of volunteerism. She should be kind, loyal, and positive in her relationships with other clubwomen. Unlike Clubwoman of the Year which honors a member for her achievements for a specific year, the Jennie Award nominee's commitment should be continuous, rather than a year. The nominee must be a member in good standing of a GFWC club for a minimum of five years.

The judging criteria and the GFWC Jennie Award Nomination Form can be downloaded from the GFWC Member Portal.

Please remember that your Jennie Award applications must be postmarked by March 1, 2021 and mailed to GFWC-MFWC President Sherri E. Reid.

If you have any questions or comments, please contact me at [frannabrown@hotmail.com](mailto:frannabrown@hotmail.com) or (662) 414-1048.

I am looking forward to receiving nominations from each club.

Frances H. Brown  
 GFWC-MFWC Jeannie Award Chairman  
 GFWC-Mississippi Federation of Women's Clubs, Inc.  
 680 Highway 9 North /Buce, MS 38915  
 C/T: (662) 414-1048 / E: [frannabrown@hotmail.com](mailto:frannabrown@hotmail.com)



Visit our website



"Like" us on facebook



"Follow" us on Twitter

*This message is from the GFWC-Mississippi Federation of Women's Clubs, Inc. (MFWC). To be removed from or added to the GFWC-MFWC distribution list, send your request to [Lisa A. Harris](mailto:Lisa A. Harris)*

**GFWC-MFWC Special Emphasis Project: Mississippi Public Broadcasting**

Mississippi Public Broadcasting applauds the work of Mississippi Federation of Women's Clubs, Inc. and we are certainly happy to have your organization join MPB as we bring Sesame Street in Communities to your area.

We are happy to announce that we were able to obtain one of the grants offered by Sesame Workshop. As a result, we are partnering with civic organizations like Mississippi Federation of Women's Clubs to promote this project.

Your role in this will be to assist us in recruiting educators and families in rural areas that would not normally interact with a public media station. Our target population is childcare providers and families from rural areas, but we will not shy away from participants in urban areas.

MPB will focus on the following: Building Literacy, Science and Health Emergencies. The SSIC website at <https://sesamestreetincommunities.org> features tools and resources that help kids and families enrich and expand their knowledge during the years of birth through six.

Participants will be able to select one day that they would like to attend the virtual training. The dates scheduled are March 23<sup>rd</sup>, 25<sup>th</sup> and April 1<sup>st</sup>. The training should last no longer than two and a half hours. Teachers who commit to the virtual training for the duration and complete the survey will receive professional development hours. All participants, including partner agencies, will receive wonderful door prizes for being a part of this great project.



## Important Dates (Overview)

<b>February 2021</b>	
19 <sup>th</sup>	2021 GFWC-MFWC <b>Finance Committee &amp; Executive Committee</b> Meeting
20 <sup>th</sup>	2021 GFWC-MFWC <b>Winter Executive Board Meeting</b> (Zoom Video Conferencing)
<b>March 2021</b>	
6 <sup>th</sup>	GFWC-MFWC <b>Central District Convention</b> (Zoom Video Conferencing)
13 <sup>th</sup>	GFWC-MFWC <b>Northern District Convention</b> (Zoom Video Conferencing)
20 <sup>th</sup>	GFWC-MFWC <b>Southern District Convention</b> (Zoom Video Conferencing)
<b>April 2021</b>	
18 <sup>th</sup> -24 <sup>th</sup>	GFWC Volunteers In Action Week
24 <sup>th</sup>	GFWC Federation Day
TBA	GFWC-MFWC Annual <b>State Convention</b> (Zoom Video Conferencing)
For a complete listing of Important Dates, <a href="#">click here</a> .	

### Postmark Deadline:

Please note: if the postmark deadline falls on a Sunday or a Holiday, the application/form must be postmarked prior to postmark date.





# General Federation of Women's Club



1734 N Street, NW  
Washington, DC 20036-2990

Phone:  
202-347-3168  
For membership information:  
800-443-GFWC

[www.gfwc.org](http://www.gfwc.org)



## GFWC News

### GFWC Notable Events

- 1<sup>st</sup> - 28<sup>th</sup> - Library Lovers Month
- 1<sup>st</sup> - 28<sup>th</sup> - Teen Dating Violence Awareness and Prevention Month ([Link](#))
- 17<sup>th</sup> - Webinar with Prevent Child Abuse America ([Link](#))
- 21<sup>st</sup> - Girl Day/ Introduce a Girl to Engineering Day ([Link](#))
- 24<sup>th</sup> - Webinar with Canine Companions for Independence ([Link](#))

## Announcing the Convention Theme



The theme for the 2021 GFWC Annual Convention is *"Celebrating Culture, Cultivating Connections."* Culture reflects a society's values and customs, and provides a means to relate to and understand one another. Cultural awareness promotes effective communication and profoundly increases the ability to appreciate and enjoy a variety of new people and experiences.

Connecting with each other as individuals, or in groups, gives us the opportunity to work together to bridge the cultural divides that hinder our efforts to have a positive impact in our communities and around the world.

Stay tuned for 2021 Convention details and imagine the possibilities as we make plans to come together in friendship and earnest pursuit of improving the lives of others!

## Seeking 2021 Croly Award Applications

It's time to spread the word that the application for the [2021 Croly Award](#) is now open! Encourage all journalists you know who have helped advance the rights of women to apply by **April 30, 2021**, using this application form, and consider sharing the award information on Facebook. All journalists who contribute to newspapers, broadcast news programs (radio, television, and digital), magazines, or online publications, either on staff or in a freelance capacity, are welcome [to apply](#). A deserving journalist could be working right next door!

## Affiliate Organization Webinars Continue with Canine Companions for Independence on February 24

Follow *News & Notes* and monitor the Important Dates Calendar at [www.GFWC.org](http://www.GFWC.org) for updates regarding the Webinar Series.

The [third Affiliate Organization Webinar](#) will be Canine Companions for Independence at 4:00 p.m. EST on Wednesday, February 24. Founded in 1975, this nonprofit organization's goal is to enhance the lives of people with disabilities by providing highly trained assistance dogs and ongoing support to ensure quality partnerships.

These webinars are presented live and will include time for Q&A. To register, visit Events in the [GFWC Member Portal](#). For ongoing webinar updates, visit the [Important Dates Calendar](#) on the GFWC website.



**GFWC NEWS****Help Stop Teen Dating Violence This February****By Trisha Schafer, Signature Program Committee Teen Dating Violence Advisor**

Together, we can make a difference this Teen Dating Violence Awareness and Prevention Month! Launch a Teen Dating and Education Awareness Challenge Project, if your club has not done so already. You and your club can play a critical role in preventing another teen from becoming involved in an abusive relationship or becoming an abuser.

Adolescents need a forum to seek help when coping with anxiety, bullying, anger, and other issues that today's 12- to 18-year-olds face. Teens and their parents need to know what a healthy relationship looks like and where to find resources and certified teen counselors or domestic violence, rape crisis, or sexual assault subject matter experts. The GFWC Signature Program Committee has developed a series of resources to help you promote Healthy Teen Relationships.

Visit the [GFWC Member Portal's Digital Library](#) for:

- The Challenge Project General Information Flyer - available now
- Healthy Relationships Rackcard - coming soon
- Press Release - coming soon

All resources will be available under "C" Resources in the "Challenge Projects" sub-folder.

Reach out to your local middle and high schools, Juniorette Clubs, youth groups, Girl and Boy Scout troops, and community centers. Contact GFWC's Affiliate Organization Prevent Child Abuse America (PCAA), as well as the National Coalition Against Domestic Violence (NCADV), National Sexual Violence Resource Center (NSVRC), National Center on Domestic and Sexual Violence (NCDSV), and/or Futures Without Violence to order Healthy Teen Relationship materials. Spread the word!

Let's hear those success stories! Email [PR@GFWC.org](mailto:PR@GFWC.org) a summary of your project and how it made a difference to be considered for the GFWC Blog.



# Support GFWC

## Support GFWC When You Shop at Amazon.com

Help strengthen GFWC's volunteer programs the next time you shop at Amazon.com by making your purchases through GFWC's Amazon.com affiliate link. The link enables members to direct **up to 0.5% percent** of your total purchases to the Federation. For more information, [click here](#).

**amazon**smile  
You shop. Amazon gives.

## Let Your Flag Fly

The time has never been better to let our Emblem-spangled banner wave. GFWC Flags come in 3'x5' and 4'x6' sizes. You can also order a GFWC Podium Banner or Road Sign. Prices start at \$35.00. The GFWC flag is a perfect, highly visible, and easily portable way to brand any event, publicity table, or speaking engagement. Go to [GFWC Marketplace](#) to place your order today.



## GFWC Marketplace: 2020-2022 Administration Pin

Have you ordered your 2020–2022 Administration Pin yet? It's an initial step you can take in joining this Administration to light a path toward the future! This brightly-colored pin features a rising sun, a symbol of new beginnings. The back is magnetic for your convenience. Celebrate the start of the 2020–2022 Administration and order your pin (\$5.00) in [GFWC Marketplace](#).



## Renew Your Magazine Subscription Online

A new feature has been added to the [GFWC Member Portal](#) that allows you to renew your one-year GFWC *Clubwoman Magazine* subscription online! Once logged into the portal, go to the Marketplace tab and then select "Education Add-Ons." A one-year *Clubwoman* subscription should then be the only option on the next page.

## GFWC Infinity Scarf

With the February chill in the air, there is no better time to pick up a GFWC infinity scarf! This soft and silky Viscose Scarf is made of lightweight and slightly sheer fabric, measures 21X70, and is seamed together to create a loop. Whether you are dressing up or down, this will be the perfect GFWC edition to any outfit! [Order yours today](#).

