



The Heartbeat

September 2020

Volume XI Issue I



Do something today that your future self will thank you for! -

Plant 🌱 *Recycle* ♻️ *Pick It Up* 🗑️



The mission of the GFWC-Mississippi Federation of Women's Clubs, Inc. is an organization of women whose goal is personal enrichment leading to volunteer service that benefits the community, state, nation and world.

Founded on May 25, 1989 and a member of the General Federation of Women's Clubs Since 1904.



GFWC-MFWC Headquarters
 2407 North State Street
 Jackson, Mississippi 39216

2020-2022 Elected Officers

Sherri E. Reid
 President
 Cosmopolitan Club
 Southern District

Carolyn Tedford
 Vice President and Dean of Chairmen
 Poplarville Woman's Club
 Southern District

Theresa H. Buntyn
 President-elect,
 Advisor to District Presidents
 and State Membership Chairman
 GFWC-MFWC Decatur Woman's Progressive
 Club
 Central District

Deana T. Pittman
 Secretary
 GFWC-MFWC Batesville Woman's Club
 Northern District

Belinda Peacher
 Treasurer
 GFWC-MFWC Florentine Evening Club
 Central District

In This Issue



GFWC-MFWC Headquarters & Elected Officers	2	GFWC Partners to GFWC Affiliate Organization	26
Exploring Our Roots	4	Our 5 New Community Service Program Areas	28
A Message from Your State President Sherri E. Reid	5	GFWC-MFWC Important Dates (Overview)	30
Changing of the Guard	7		
A Message from your Immediate State President Becky C. Wright	8	General Federation Of Women's Club News	30
September Is...	11	Message from International President	33
Childhood Cancer Awareness Month	12	Meet your GFWC Executive Committee for the 2020 - 2022 Administration	34
Awards Won at GFWC International Convention	13	Official Call to Southern Region Conference	38
Online Club Resources	14	GFWC Resources Moved to Members Portal - Logging On	40
GFWC-MFWC State & District Dues	15	Support GFWC	41
Summer Board Meeting and Summer Institute 2020	16		

The GFWC-MFWC Newsletter "The Heartbeat" is published by the GFWC-MFWC.

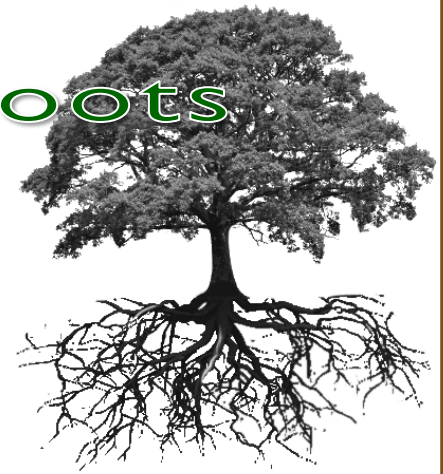
All submissions are welcome. Photographs are encouraged. Mail articles and/or photographs to Lisa A. Harris, 822 SCR 115 S, Raleigh, MS 39153 or email to lisaharris@outlook.com. Questions or comments, contact Lisa at (601) 940-1519.

Exploring Our Roots

"A History of the Mississippi Federation of Women's Clubs"

Administration of Mrs. O. B. Taylor

1932 - 1934



✿ Eighteenth President of the MFWC from Jackson, MS

Highlights of this Administration

- ✿ During Mrs. Taylor's administration, most of the Federation's work was geared to alleviating the suffering of their fellow Mississippian during the Depression.
- ✿ Several new Departments were created under this administration. They were: Soils and Minerals; Highway Beautification; World Peace; Radio; Advertising and Circulation and Child Welfare. The Department of Fine Arts which had been suspended was reinstated. The Commission on Rural Extension was changed to County Cooperation. The Committee on Juniors was elevated to a Department so that more emphasis would be placed on younger women.
- ✿ The thirty fifth annual Convention of the MFWC was held in Hattiesburg, MS in November, 1933 and it was presided over by Mrs. Taylor. The convention theme was "Latent Power," and the keynote was "Look to the Work to Times Reveal."
 - District Presidents and committee chairmen made reports on their programs. One interesting report from the Law Enforcement Chairman was that resolutions had passed in all districts against the repeal of the 18th Amendment. The Club Extension Chairman reported an increase of several new clubs throughout the year, increasing the Federation's membership. The Public Welfare Committee was recognized as having the most outstanding activity of the year. This committee had been responsible for Feeding the Hungry of the State. Undernourished children had been supplied with milk and hot lunches. The Health Committee reported the immunization of 10,000 Mississippi Children. First aid centers were established, and recreation and playground facilities were created.
 - Several resolutions were adopted at this convention, most of which pertained to the Federation's operation. Other resolutions were endorsement of the ratification of the Child Labor Amendment to the United State Constitution and ratification by the Mississippi Legislature; that the Mississippi Highway Commission be aware of natural beauty in maintenance of roads; and an appeal to the Mississippi Legislature to retain the state's dry laws.
- ✿ The thirty sixth annual meeting of the MFWC was held in 1934 in Jackson, with Mrs. Taylor presiding.
 - Seventeen new clubs were added during the year. The World Peace Department was added to the Federation.
 - Several achievements by the Legislative Committee were reported. A State Forest Bill with a Parks Amendment passed in the Mississippi Legislature. Also passed by the Legislature was a restoration of appropriations for the Mississippi Library Commission which had lapsed two year before. The committee

(Continued on page 10)



From the desk of... **Sherri E. Reid**

Happy Fall Y'all!

What is the first thing that you think of when you realize it is fall? I know everyone of you thought I would say the color of the leaves on the trees. Well that is probably the truth. Fall is the best time of the year to plant a tree!

I do think of the beautiful leaves on the trees, but I also think of what a busy season it is. Fall brings, football games, Fall ball, Fall festivals...but as clubwomen it is all about school starting back, volunteering, school supplies, dance and gym returns. We begin our club season.

Please pay close attention to some of the wonderful ideas that our chairman have suggested in our newsletter. Most of these ideas these are specifically designed to be things we can do while trying to stay home and keep our distance.

As we begin looking at the needs in our community do not get so busy that you forget about yourself and your health. Stay in touch with your club members and stay safe. Wear your mask, wash your hands and take care of yourself!! I want you to be able to continue to support our communities.

As you drive down the road or have your quiet time in the mornings, notice those amazing trees that God created to change for us in the fall to give us something beautiful to be amazed by.

Thank you for all you do.

Do something today that your future self will thank you for! Plant, Recycle, Pick it up!!

sherri



Sherri E. Reid
2020-2022 GFWC-MFWC
President

Plant  **Recycle**  **Pick It Up** 

GFWC Leadership - Southern Region Annual



Dear MFWC Clubwoman,

I am writing to ask you to please consider attending our Southern Region Virtual Meeting on Saturday, October 31st. I know that our Southern Region Meetings are known throughout the MFWC for their tours, southern cuisine, fun and educational opportunity in some of the South's great cities. But meeting and getting to know some of our Southern Sisters virtually should be a whole new experience for all of us.

By meeting virtually, it provides all attendee (first timers and returnees) with the chance to vote on Region level issues, learn how states work and even influence the direction and future of our organization. Just think, you can attend this meeting without traveling far from home, spending a lot of money or buying new clothes.

Our Region Officers, as well as GFWC International President and President-elect, and an a special speaker will be educating us on GFWC programs. There is even a chance that you can WIN prizes!! Did you read that correctly? Yes, Prizes!!!

Cynthia Geis, our Southern Region President, has found innovative ways to make this virtual meeting FUN!!! It won't be all business and no play – she has planned virtual tours, games, and door prizes.

Registration is open now on the GFWC Website at the MemberSuite Portal under "Events." Select "Browse Events." Select "2020 Region Conferences." Once you begin the process, you are allowed to select your Region. If you have a problem with the Portal, please contact GFWC at gfwc@gfwc.org or call (202) 347-2937 during business hours. There is a registration fee of \$35.00, with \$25.00 to GFWC; \$10.00 to Southern Region. Any MFWC member who registers will be entered into our own MFWC drawing.

Cynthia assures us that we will be finished in time for trick or treaters coming to our doors Or dressing up for your own costume party!!

Join me and all our Southern Sisters by registering today for our Southern Region Meeting on October 31!

Do something today that your future self will thank you for! – Plant > Recycle > Pick It Up!

sherri



GFWC Advancement Plan - Leadership

Changing of the Guard

During even year of the GFWC-MFWC State Convention, the “Changing of the Guard” usually happens but due to COVID-19, our State Convention was cancelled and the “Changing of the Guard” did not happen. What is Changing of the Guard? It is a phase that refer to a situation in which there is a big change when a new group of people replace other people in position of importance.

As COVID-19 continued to effect more and more people in our nation, Governor Reeves issues Executive Orders to curve the spread of COVID-19. Under his “Stay Home” and other Executive Orders we were not able to hold our Summer Institute and Board Meeting in person. Not to be outdone, our GFWC-MFWC leadership decided to hold a Zoom Summer Board Meeting and Summer Institute. It was during this meeting that the changing of the guard happen. Below are several picture taken by Terri Whitehurst of this event.

Congratulations to Sherri E. Reid on become our sixty-second president of the GFWC-Mississippi Federation of Women’s Clubs, Inc.



Becky turns over the “reins” of the GFWC-MFWC to President Sherri E. Reid.



GFWC-MFWC President Sherri E. Reid pins outgoing President Becky C. Wright with a copy of the GFWC Mississippi pin.



GFWC-MFWC President Becky C. Wright pins our GFWC-MFWC State President’s pin on Incoming President Sherri E. Reid.



The changing of the guard has happened.

Congratulation to Sherri E. Reid on her appointment as GFWC-MFWC President.



An Empowering Article from Becky C. Wright 2018 - 2020 GFWC-MFWC President

“I’m not sure what I will do, but —well, I want to go places and see people. I want my mind to grow. I want to live where things happen on a big scale.” —F. Scott Fitzgerald. When I began my GFWC journey in 1995, my hope was simply to become involved in my little community and meet friends. Little did I know that being a member of the oldest volunteer organization in the world for women would empower me with the opportunity to go to so many places and see so many people, grow in ways I never dreamed of, and live in volunteer land where collectively things do happen on a big scale. What an honor it has been to serve as the President of GFWC-MFWC and watch you go places and see people, grow your mind, and make things happen as you Empowered the Heart to Make A Difference!

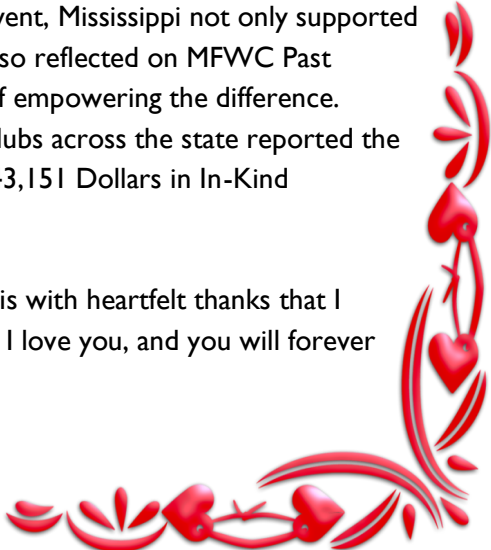
Over the past two years, my journey has taken me across the state of Mississippi to some of the most beautiful places to meet the most beautiful members who now will always have a special place in my heart. For your welcoming hospitality, encouragement, and support, I will forever be grateful. Representing MFWC I excitedly traveled to Richmond, Virginia; Austin, Texas; Charleston, South Carolina; and Washington, DC —multiple times, but my proudest moments were when I traveled with you — visiting our State Capitol and the Governor’s Mansion making our presence known with our state leaders — seeing people and being seen!

As you all know the President’s Special Project – *Empowering the Heart to Make A Difference: Detect. Correct. Protect.* was very special to my heart in that my mother was my inspiration. To honor her memory, the goal of the PSP was to raise awareness, raise funds, and advocate for women’s health. We would detect the problems, correct the problems, and protect our future health. You outdid yourselves and I will forever be grateful! For the 2018-2020 PSP you reported 434 Projects, 22,209 Volunteer Hours, Donated \$29,970, and \$37,875 in In-Kind Donations! That is incredible! However, what I am most grateful for is knowing that the awareness raised through the programs and information provided by the American Heart Association empowered our members to detect, correct, and protect their heart health — what a blessing to receive calls of gratitude from members who thanks to the PSP learned the numbers, treated the issue and are with us today! Above all else, guard your heart! (Prov. 4:23)

Fulfilling one of the goals to learn something at each meeting, I watched you grow alongside me and together everyone achieved more. My heart swelled with pride as I watched so many of you grow in your leadership as you lead our members through service projects and then followed through with your report, showing that collectively we could make things happen on a big scale. By implementing a service project at each state meeting and event, Mississippi not only supported the Seven Grand Initiatives of GFWC International President Mary Ellen Brock, but also reflected on MFWC Past President’s PSPs to remind members of the ways MFWC has a longstanding history of empowering the difference. *Empowering the Heart to Make A Difference* during the 2018-2020 Administration, 34 clubs across the state reported the following: 8,882 Projects; 398,558 Volunteer Hours; \$722, 222 Dollars Donated; \$943,151 Dollars in In-Kind Donations; \$282,279 Raised; and \$187,012 Spent.

To paraphrase Dr. Seuss, I don’t cry because it’s over, I smile because it happened. It is with heartfelt thanks that I write this article as your Immediate Past President —you have empowered my heart, I love you, and you will forever have a special place in my heart.

Forever *Empowering the Heart to Make A Difference*,
Becky



Administration Accomplishments: 2018-2020

- ♥ Encouraging all members to embrace the history within, MFWC graciously put out the welcome mat at our beautiful Headquarters, most notably welcoming GFWC International President Mary Ellen Brock. In addition to regular meetings, eight events were held at Headquarters as well as our welcoming guests for a two-page feature in *Find It In Fondren* magazine and the presentation of the Mississippi Digital Library 2019 Cultural Heritage Digitization Award.
- ♥ Amended the Constitution and Bylaws to reflect changes resulting from redistricting and amended Standing Rules pertaining to the Hebron Memorial Scholarship to clarify.
- ♥ In support of the President's Special Project, MFWC approved a Resolution for presentation to the GFWC Resolutions Committee. After consideration, the GFWC Resolutions Committee will be proposing the resolution at the 2020 GFWC Convention as an amendment to 013-540 Tobacco and Young People.
- ♥ Building on the reinstating of the ESO Charter, the President's Reading Challenge was established with monthly President's Picks plus four selections from Reading to Children to allow members "Reading with the President" to complete the required reading to become a member of ESO within the year.
- ♥ Established a Mississippi affiliate with I Support the Girls that allowed members to embrace the GFWC Signature Program to provide bras and hygiene items to those in need across Mississippi.
- ♥ Hosted Domestic Violence: kNOw More to bring awareness and provide education on prevention for the GFWC Signature Program including planting purple pinwheels on the Headquarters' lawn.
- ♥ Chartered one General Club, Leading Ladies, consisting of GFWC LEADS Delegates and one Juniorette Club.
- ♥ Focusing on Leadership, held an Incoming Leaders Training at the beginning of the administration for club presidents, district officers, and state chairmen and two MS LEADS Seminars open to all members.
- ♥ To enhance our communication, officers visited almost every club in our state to build relationships, share knowledge and encourage leadership. Additionally, MFWC continued to publish two *Mississippi Clubwoman* magazines and nine editions of *The Heartbeat*—our GFWC-MFWC Newsletter.

(Continued on page 10)



GFWC Leadership - Accomplishment from 2018 - 2020 Administration

(Continued from page 9)

- ♥ Empowering the heart to make a difference, MFWC embraced the Seven Grand Initiatives of GFWC International President Mary Ellen Brock, reminding GFWC and the world that Mississippi is the most charitable of all states. By implementing a service project at each state meeting and event, Mississippi not only supported the Seven Grand Initiatives, but also reflected on MFWC Past President's PSPs to remind members of the ways MFWC has a longstanding history of empowering the difference.
- ♥ To maintain relevancy, and to engage and connect with more members, we have grown our social media presence on Facebook and Instagram utilizing hashtags, more photos, and engaging posts.
- ♥ Implemented the option of electronic payments for registration and Ways and Means.
- ♥ Established a Score Card for judging reports and a Playbook for clubs to have a better understanding of reporting. The MFWC President and MFWC Vice President/Dean of Chairmen took the Score Card and Playbook on the road for five training sessions.
- ♥ Published and made available GFWC-MFWC Membership Tri-folds with information about highlighting past and present projects and programs for public relations and recruiting. Additionally, a Membership Publicity Display Board and Project Posters were purchased to display at meetings and events to bring awareness and promote membership.

GFWC Women's History and Resource Center - Exploring Our Roots

(Continued from page 4)

also reported the failure by the Mississippi Legislature to ratify the Child Labor Amendment. It did, however, retain Mississippi's dry laws, which was viewed a victory by the Mississippi Federation.

- Other projects which Mrs. Taylor directed were a survey of the handicapped in the state; health surveys, the Ten-cents-a-member: campaign for the cure and control of cancer; and the rehabilitations of the handicapped program.
- Earlier Mrs. Taylor had appointed a special committee to investigate and make recommendations about establishing a Federation home. Mrs. Taylor directed them to recommend a location, decide on the type of building needed, and to ascertain if any funds were available. Miss Covington stated that \$1,000 was available. The committee unanimously selected Jackson as the site for the building. Consequently, the 1934 convention approved the establishment of a State Headquarters and set aside \$3,000 for that purpose.
- Another resolution endorsed by the convention was support for Civilian Conservation Corps Camps and their program. The Federation also endorsed the movement for the acquisition of "Malmaison," the antebellum home of Greenwood Leflore, by the United State Government to be used as a Federal Park and National Shrine, and pledged support to this effort.

Source: "A History of the Mississippi Federation of Women's Clubs 1898-1998" by Tommye Hogue Rosenbaum, 1998, Commemorating The Centennial of the Mississippi Federation. Published by the GFWC Mississippi Federation of Women's Clubs, Inc., 2407 North State Street, Jackson, MS 39216. Copyright 1998 by Tommye Hogue Rosenbaum for the Mississippi Federation of Women's Clubs, ISBN: 0-935515-32-1.

September

As the ninth month of the year, September marks the beginning of autumn in the northern hemisphere (and the start of spring in the southern). Traditionally considered the month that marks transitions between seasons, it is often one of the most temperate weather-wise.

Notable Dates

September 17 is **Constitution Day**. This day celebrates the adoption of the U.S. Constitution, which occurred on September 17, 1787 (just five years prior to the founding of *The Old Farmer's Almanac*, believe it or not!).

September 21 is recognized as the annual **International Day of Peace**. Observances range from a moment of silence at noon to events such as peace walks, concerts, and volunteering in the community.

September 22 marks the start of fall! This year's **Autumnal Equinox** falls on September 22 at 9:31 A.M. EDT. At this time, there are approximately equal hours of daylight and darkness.

September 26 marks the virtual Walk/Run to End Childhood Cancer hosted by St. Jude Research Hospital.

September 26 is **National Public Lands Day**. This year's events fall on September 26 when outdoor freaks and geeks come out to participate in planting trees, removing trash, and observing wildlife.

Notable Monthly Events

- Baby Safety Month
- Classical Music Month
- National Blood Cancer Awareness Month
- National Childhood Cancer Awareness Month
- National Childhood Obesity Awareness Month
- National Honey Month
- National Library Card Sign Up Month
- National Preparedness Month
- National Self-Care Awareness Month
- Pulmonary Fibrosis Awareness Month
- Self Improvement Month
- National Suicide Prevention Month



2020

Disasters Don't Wait.
MAKE YOUR PLAN TODAY.



September is Childhood Cancer Month

What is Childhood Cancer?

Childhood cancer (also called pediatric cancer) typically means a cancer that is found in children and teens, and sometimes young adults. It is not just one disease. There are many types, which can be found in different places throughout the body.

The most common cancer in children is leukemia, a type of blood cancer. Cancer can also occur in organs and tissues such as the lymph nodes (lymphoma), nervous system (brain tumors) and muscles, bone and skin (solid tumors).

The Facts (Statistics)

- Cancer is diagnosed each year in about 175,000 children ages 14 and under worldwide.
- Cancer is the leading cause of death by disease past infancy for U. S. children.
- However, thanks to better therapies, more than 80% of U. S. childhood cancer patients now becoming long-term survivors.
- Survival rates can vary depending on the type of cancer.
- About 420,000 childhood cancer survivors live in the U. S. with many more around the world.

What Causes Cancer in Children?

The causes of childhood cancer are not completely understood. While adult cancers are often linked to lifestyle or environmental factors, cancer in children is different in several ways.

In a young person, cancer is less likely to be caused by the patient's environment or lifestyle. Instead, cancer-causing genetic changes (called mutations) are most commonly thought to occur by chance. However, in about 8% of cases children are born with genetic changes that increase their risk of getting cancer.

You Can Help!

Your help is needed. How you ask?

- Provide a listening ear. Call on a regular basis and talk to the child with cancer, siblings and/or parents - whoever you think you can best support.
- Send a handwritten card.
- Find a local restaurant and have them deliver a meal to the home or hospital for one night. Or deliver the child's favorite food to their house.
- Stay in touch using email or text messaging with the child. Make sure you have the parents permission.
- Contact the point person for the family and tell them you wish to help out and have them let you know if a need arises.
- Donate money to Childhood Cancer Research.

Sources: St. Jude Research Hospital and CureSarch.org.

Awards Won at GFWC International Convention

Due to COVID-19, the “Remember The Rose” GFWC Convention was held virtual on YOUTUBE video instead of in Atlanta, GA as planned. By way of video, you were able to cheer as the CSP, Advancement Area, and Contest Chairmen announced their awards. The Junior Banquet session featured the Junior Membership Increase Awards, the Juniorette Participation Awards, the Juniors' Special Program Awards, the March of Dimes Awards, and the Millie Crom Awards.



The Gala Banquet highlighted the Community Improvement Program winners, the Jennie Award winners, and the Charlotte Emerson Brown Excellence in Leadership winners. As with a change of administration Convention, there was the 2018–2020 Director of Junior Clubs Trisha Schafer's Farewell Address, 2018–2020 International President Mary Ellen Brock's Farewell Address, and 2020–2022 International President Marian St.Clair's Inaugural Address. The fantastic totals for the Seven Grand Initiatives and Three Brand Initiatives were revealed during International President Mary Ellen Brock's Farewell Address, and they were astounding.

Listed below are the awards that were received by GFWC-Mississippi Federation of Women's Club, Inc. clubwomen for their volunteering in local communities, on the state, regional and international level. My congratulations to all GFWC-MFWC Clubwomen and their volunteer effects.

- Tammy Griffin, 2020 LEADS Delegate
- Conservation CSP - Theresa T. Berryhill, Chairman
- Canine Companions for Independence State Award - Minetta Veazy, Home Life Chairman
- Newsletters State Awards - Lisa A. Harris, Editor
- Newsletters Club Awards - First Place - GFWC-MFWC Raleigh Woman's Club, Raleigh, MS - Lisa A. Harris, Editor
- Websites State Awards - Lisa A. Harris, Webmaster
- Leadership Advancement Area - Carolyn Tedford, Chairman
- Membership Advancement Area - Sherri E. Reid, Chairman
- Membership Increase Awards - Sherri E. Reid, Chairman
- Fundraising and Development - Karan Hardin-Nester, Chairman
- Women's History and Resource Center - Miranda Vaughn, Chairman
- Domestic Violence and Prevention Fund - Top Ten Awards - GFWC Mississippi - #9 - Deana Pittman, Chairman
- Juniorette Participation Awards - Bruce Fine Arts Juniorettes, Juniorette Diamonds, Ackerman Juniorette, Pontotoc Juniorette Club, Dixie Daisy Juniorette and Juniorettes of Ellisville.
- Junior's Special Program: Advocates for Children - Rebecca King, Chairman
- Charlotte Emerson Brown Award - Becky C. Wright

For a copy of the complete awards booklet, use this [link](#).



Online Club Resources

Available now on our website for downloading/printing/viewing or saving to your computer, phone or tablet are the following 2020-2022 resources:

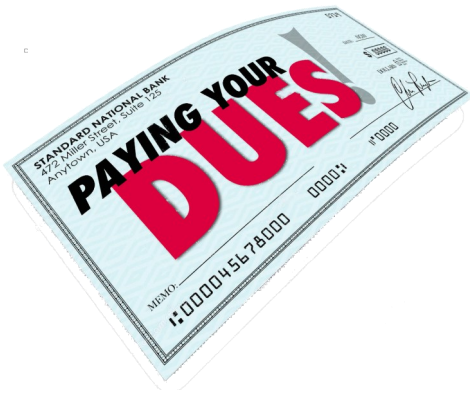
- On the [Important Dates](#) tab you will find the 2020 -2020 Administration Important Dates. Be sure to check out the new monthly calendar for 2021.
- At the [Club Resources page](#) you will find the following resources:
 - * 2020 - 2022 Handbook and Governance
 - * 2020 - 2022 Administration Logos. If you wish a high resolution copy, please email Lisa A. Harris at lisaharris@outlook.com for a copy of this administration logo. Please include why you need a high resolution logo with your request.
 - * GFWC-MFWC Logos. If you wish a high resolution copy, please email Lisa A. Harris at lisaharris@outlook.com for a copy.
 - * Directions for downloading GFWC 2020 - 2022 Emblems, Logo Files and Administration Logo.
 - * Directory - Contact Lisa A. Harris at lisaharris@outlook.com for an electronic copy of our directory. For verification purposes you will need to provide your name and your club name in the requesting email. We are doing this to protect against identity theft of your contact information and photograph. Please do not share the information in this directory with anyone outside our organization.
- At GFWC-MFWC [Awards and Contest](#) page you will find updated Entry Cards for Arts/Craft, Youth Arts Contest and Youth Art Challenge Contest.
- At GFWC-MFWC [Forms](#) page, you will find the following updated forms for the 2020-2022 Administration:
 - * Club Dues Form for 2020-2021, updated 7/2020
 - * Club History Report Form, updated 7/2020
 - * MFWC Reporting Form for Club Year 2020, Reporting Year 2021. This is a DRAFT COPY. Things may change on the GFWC level which could impact the way we report our volunteer hours so keep checking back for the latest copy. The final copy should be posted to our website by the first week in December 2020.
 - * Mississippi Public Broadcasting Report Form and State Institutions Report Form, updated 7/2020
- At GFWC-MFWC [President's Special Project](#) page, you will find the 2020 - 2022 Administration theme, tag line, logo and a special note from GFWC-MFWC President Sherri E. Reid.



Recycling Facts: Since 1990, the total amount of MSW going to landfills has dropped by 5.7 tons, from 145.3 million tons in 1990 to 139.6 million tons in 2017.

GFWC-MFWC Leadership

GFWC-MFWC State Dues



When paying your GFWC-MFWC State Dues and other contributions, please download and use the new 2020-2021 Dued Forms. You can find this form on our website by using this [link](#).

During our Summer Board Meeting it was approved to **NOT** mass print our Mississippi Clubwoman Magazine, therefore, if any one in your club (General or Juniorette) wishes for a printed copy they will need to pay the \$10.00 per club year for the magazine. All printed magazine will be mailed to the Club President or Juniorette Advisor, so, please make sure your mailing address is correct.

We realize that not all clubs give to the State Hospital at Whitfield, so we are asking that you include the name of the state hospital that you wish your donation to be sent to.

When sending in your roster, please indicate who the President and Club Treasurer will be for this administration. Remember, please don't staple the check to the dues form and make the check payable to MFWC with State Dues in the memo line. All District Dues should be sent to your District Treasurer. To be considered for Honor Club, dues must be submitted to me by postmark date of November 1, 2020. To be eligible to have reports judged or to receive awards, dues must be postmarked by January 1, 2021.

If you have any questions or comments, please contact me, Belinda Peacher, at bbpeacher@gmail.com.

Belinda Peacher
GFWC-MFWC Treasurer

Paying Your GFWC-MFWC District Dues

When paying your district dues, please send your check with District Dues in the memo line to your District Treasurer. Do not send your District Dues to Belinda Peacher, State Treasurer. When sending in your District Dues, please include a copy of your club roster with the President and Club Treasurer marked.

According to Article III - Membership and Dues, Sections 2 - 4 of District Bylaws that were adopted by all districts in 2018: 1) each member club shall pay per capita dues of \$1.00 per member, dues are payable to the District Treasurer by January 1 of each year, 2) Members-at-large of the GFWC-Mississippi Federation of Women's Clubs, Inc., who reside in the District shall pay \$1.00 dues to the District Treasurer by January 1 of each year and 3) Clubs and members-at-large whose dues have not been paid before District Convention shall not be entitled to representation at the District Convention.

A listing of our District Treasurers and their contact information can be found in our Directory. If you need a copy of our 2020 - 2022 Directory, please contact Lisa A. Harris at lisaharris@outlook.com for an electronic copy of our directory. For verification purposes you will need to provide your name and your club name in the requesting email. We are doing this to protect against identity theft of our members information and photograph. Please do not share the information in this directory with anyone outside our organization.

Summer Board Meeting Summer Institute 2020



PLANT › RECYCLE › PICK IT UP



Planting a New Administration 2020 - 2022

On June 24, 2020, President Sherri E. Reid issued her first Official Call to Meeting for her Administration. Plans were being made, speakers were writing speeches, meeting space was being rented, and food was being catered. BUT, on June 30th, Sherri and the Executive Committee had to address the COVID-19 situation in Mississippi and delivered the bad news that our first face to face meeting since March 15, 2020 would not be happening now. In her words ... *After much deliberation and research your MFWC Executive Committee discussed on Sunday the rising number of positive cases of Covid-19 virus. With the best interest of all members, it does not seem at all that meeting together face to face on July 18th is what we need to do. The thought of someone contracting this terrible virus from our meeting together is not something any one of us could bear. A vote was taken by email and was unanimous to meet in an electronic format. Zoom was designated the most user friendly. Therefore, the MFWC Summer Board Meeting and Summer Institute will be held via Zoom on July 18th.*

On the following pages, you will find the scripts, call outs or articles that each chairman presented during our Video Summer Institute. If you have any questions, please contact that chairman for answers or clarification.

GFWC Advancement Area - Leadership - Summer Institute

GFWC-MFWC President Sherri E. Reid on her President's Special Project.

Growing up I would spend a lot of time in the woods watching nature, reading against a tree, always enjoying the trees, the leaves on the ground, the solace and peace of it all. My Daddy enjoyed being outside too. He taught me to identify the trees by their bark, the fruit, and the shape of the leaves; all about the trees. My first year of college my biology professor spent the first two weeks of class walking with our class around the campus looking at the bark, the leaves, and the fruit of the trees. I thought everyone knew what a wild cherry tree or a hickory tree looked like. I was amazed that no one knew the name and identification of the trees in the woods. Not everyone was lucky enough to grow up with woodlands to enjoy!

Over the years, this appreciation for the trees and the outside world fostered in me an awareness for the way in which our world is treated. Seeing our creeks, rivers, and beaches littered with trash; trash that is purposefully left by someone is offensive to me. I want to say, "Just pick up your trash!" Driving around my town and our state, seeing other counties and cities that are littered with trash just makes me so sad. I want to pull over and pick it up.

I hope that over the next two years we can learn about natural habitats and keep them clean by picking up the bottles, plastic, Styrofoam, paper plates, cigarette butts, and food containers. Instead of filling our landfills with more trash, maybe we can make some changes in our lives and make an effort to add less to them. We can learn what will recycle and ask the question for our town, "Is recycling a priority for us?" It may not be but let's ask the question, because "Yes" may be the answer.

We should plant a plethora of trees to populate our forests. There is not one bad thing about a living tree. Trees use carbon dioxide to reduce global warming, provide firewood, release oxygen, furnish timber, stop erosion, provide food for bees, birds, animals, and humans, provide windbreaks, beautify the landscape, supply shade, and offer habitat for birds and animals. Trees make everything better!!

Do something today that your future self will thank you for! - Plant ▶ Recycle ▶ Pick It Up!



Plant 🪵 *Recycle* ♻️ *Pick It Up* 🗑️



GFWC Advancement Area - Leadership - Summer Institute

Call Outs from the Chairmen

Community Impact Award



Penny J. Barr,
Chairman

This award was formerly known as Community Improvement Award.

Your club's entry can feature one to three local projects undertaken by your club. Each entry should include

one page of information on each project highlighting the selection process, goals, plan of action, how members are engaged, collaborators, and measurable impacts. The description and guidelines are spelled out very well in the GFWC 2020-22 Club Manual.

Financial incentives range from \$35 to \$2,500. The award period goes from January 1, 2020 to December 31, 2021.

Club entries are due to Penny Barr by February 22, 2022.

Mississippi Emphasis Project - Mississippi Public Broadcasting (MPB)



Libby D. Everett,
Chairman

In 1969, the Mississippi Legislature established ETV with the mission of providing "educational and instructional professional growth and public service programs for the students and citizens of Mississippi." As of February 1, Mississippi Public Broadcasting is commemorating 50 years of service to Mississippi residents.

Each MFWC club should provide projects and programs during the club year to emphasize the importance of MPB in their communities. Programs and projects are reported on a separate MFWC reporting form that records individual contributions to MPB, MPB club membership, local MPB membership drives, publicizing MPB programs in local media, legislative contact, and other support. This can be cross-reported in the Education and Libraries CSP.

Fundraising & Development



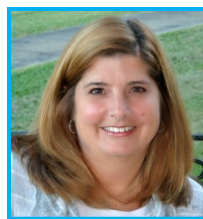
Diane Rouse,
Chairman

Fundraising is essential and beneficial to your club and your community because you are raising capital for scholarships, local projects, GFWC program area projects, affiliate organizations, etc. BUT it is also an excellent opportunity to make your local club KNOWN in your community by seeing how much FUN you are having when you are FUNdraising.

Don't be afraid to try something new or do things in a new way and always, ALWAYS be creative.

- ♦ Try a FACEBOOK auction, New to You sale or even a GoFundme for your club.
- ♦ Research and apply for community service grants through businesses.
- ♦ Partner with local small businesses to sell items your crafty club member make.
- ♦ Wear masks and meet outside to have plant sales.

Arts and Culture CSP



Abby May,
Co-Chairman



Amy A. Jacobs,
Co-Chairman

Hey! We're back....As your Arts and Culture Chairs. This is going to be so much fun! Why? Because a good many of the things you are already doing is what you need to continue to do with a twist. You get to embellish your creative side. Use your imagination and those thoughts you had to do things with a twist. That's what we will be looking for.

Now let's bring a little culture to the mix. Research and learn and share

about musicals, ballets, operas, theatre, and artist. Learn and share about art galleries, museums throughout the world. Learn and share about those cultures you are interested in and never took the time. Now is the time. Research, learn and share with us all. Google is your friend. Let us all know that one thing you found so intriguing.

All of these things are what your clubs can do social distancing and even with a mask on ...There's another idea. How creative can one get with their mask? Let us count the ways. Show us!

Leadership Advancement Plan



Melba Watkins,
Chairman

Mississippi is known for our hospitality, our generosity, our writers, our entertainers and our diverse culture. Consistent and on-going LEARNING AND LEADERSHIP are the biggest factors behind all Mississippi's success.

The purpose of this Advancement Plan is to promote and prosper our state and local club leadership. In closing, with the development of strong leaders our local clubs will grow thus growing state membership. Strong leadership is the single biggest way to impact an organization.

Watch for upcoming dates for our LEADS seminars.



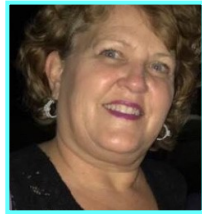
For More
Information

GFWC Advancement Area - Leadership - Summer Institute

value of One Member



Theresa H. Buntyn,
Chairman



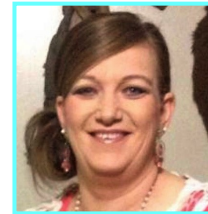
Sharon Hudson,
Northern



Theresa T. Berryhill,
Central



Laura Ann Trigg,
Southern



Connie Johnston,
Juniorette Advisor

2020 - 2022 Membership Committee

The Membership Committee offered up the following tips on how to increase membership during the 2020 - 2022 Administration.

Our first tip comes from Connie Johnston, 2020 - 2022 Juniorette Advisor

- **ONE MEMBER** can ignite the opportunity to establish a Juniorette Club in their community by using social media to bring awareness to young girls to:
 - ◆ Develop and practice leadership skills,
 - ◆ Participate in diversified social activities,
 - ◆ Explore education and career Possibilities,
 - ◆ And to fulfill community service graduation requirements.

Can you be that **ONE MEMBER** who ignite at the opportunity to establish a Juniorette Club?

Our next tip comes from Northern District President-elect Sharon Hudson.

- **ONE MEMBER** can invite a neighbor, friends and former members to participate in a club project that promotes your town or community. This member can follow-up with a phone call or email invitation to join the club.

Can you be that **ONE MEMBER** who invites a person or persons to your next club project?

Our third tip come from Central District President-elect Theresa T. Berryhill.

- **ONE MEMBER** can be a mentor to assist the new member in her first year in every way needed, from answering questions about the club and club activities to helping her determine which committee to serve on, and introducing her to current club members.

Can you be that **ONE MEMBER** who mentor a new member?

Our final tip come from Southern District President-elect Laura Ann Trigg.

- **ONE MEMBER** can offer a ride to club and committee meeting and project sites.

Can you be that **ONE MEMBER** who offers the ride to the new member?

Can you be that **ONE MEMBER** ?

The Value of One Member

Ten little members standing in line
One disliked the President, then there were nine.
Nine ambitious members offered to work late
One forgot her promise, then there were eight.
Eight creative members had ideas good as heaven
One lost enthusiasm, then there were seven.
Seven loyal members got into a fix
They quarreled over programs, then there were six.
Six members remained, with spirit and drive
But one moved away, then there were five.
One became indifferent, then there were four.
Four cheerful members who never disagree
Till one complained of meetings, then there were three.
Three eager members...what do they do?
One got discouraged, then there were two.
Two lovely members, our rhyme is nearly done
One joined a bridge club, then there was one.
One faithful member was feeling rather blue
Met with a neighbor, then there were two.
Two earnest members each enrolled one more
Doubled their number, then there were four.
Four determined members just could not wait
Till each won another, then there were eight.
Eight excited members signed up sixteen more
In another six verses, there will be a
"Thousand twenty-four"

GFWC Advancement Area - Leadership - Summer Institute

Civic Engagement and Outreach CSP

Submitted by Theresa T. Berryhill, Chairman.

Thank you, President Sherri Reid, for the opportunity to serve as chairman of the Civic Engagement and Outreach Community Service Program. Most of the programs that have been formally serviced under our Public Issues will be reported within the Civic Engagement and Outreach Community Service.

Our Community Service program now includes the Hungry, Homeless and Needy. The best way to remember the area that will be reported are four "broad strokes" of Civic Engagement and Outreach, which are Citizenship, Crime Prevention; Safety and Disaster Preparedness; Needy, Hungry and Homeless; and Our Military Personnel and Veterans.

Citizenship

- Invite a speaker from the League of Women Voters (www.lwv.org) to your meeting. The League of Women Voters encourages informed and active participation in government, works to increase understanding of major public policy issues, and influences public policy through education and advocacy.
- Honor and celebrate patriotic holidays by hosting or volunteering for events commemorating Presidents' Day, Memorial Day, Independence Day, Veterans Day, Constitution Day, and others. Consider purchasing or printing copies of the United States Constitution for distribution. One organization that provides copies at bulk rate is Freedom Factor (www.freedomfactor.org).

Crime Prevention, Safety and Disaster Preparedness

- Warn club members and others by sharing information on Identity Theft from USA.gov, including potential victims, types of theft, warning signs, and prevention.
- Go to the National Council on Aging for information about scams against seniors that target grieving spouses, worried grandparents, and those with medical concerns. Share fact sheets with members and friends, including "The Top Ten Financial Scams Targeting Seniors," and "Eight Tips for How Seniors Can Protect Themselves from Money Scams."
- Utilize materials from the National Safety Council and other experts to educate teen drivers about the dangers of distracted driving during Distracted Driving Awareness Month in April. Use this link: www.nsc.org/road-safety/safety-topics/distracted-driving.

Needy, Hungry, and Homeless

- Organize a club day of service at a local food pantry by donating essential goods and sorting and organizing their shelves. Offer a few surprises, such as "Birthday Bags" filled with cake mix, a can of icing, candles, a baking pan,

and a birthday card.

- Hold a collection drive for I Support the Girls, an organization that provides bras, underwear, sanitary napkins, and tampons to women and girls in need. Donate the items to the closest I Support the Girls affiliate location or a similar local nonprofit organization, so they can be distributed in your area.
- Advocate for "Housing not Handcuffs," a campaign of the National Coalition for the Homeless that aims to put an end to homelessness and the criminalization of the homeless.

Our Military Personnel and Veterans

- Work with your VA to identify veterans who need household supplies and furniture, employment assistance, educational scholarships, or other help. Consider establishing an ongoing relationship with one or more veterans.
- Contribute to Wreaths Across America by sponsoring wreaths or volunteering at Veteran Cemeteries to place or remove wreaths.
- Contribute to the Honor Flight Network by donating, volunteering as a "Guardian" to accompany an honoree, and/or being part of a "Welcome Home" congregation.
- Support the Quilts of Valor Foundation by donating fabric, quilt squares, or quilts, or by making monetary contributions or becoming a sponsor.
- Donate clothing, nonperishable food items, backpacks, and other items to Stand Downs, VA events that provide necessities, health screenings, and referrals for homeless veterans. For specific information on Stand Downs go to www.va.gov/homeless/events.asp

Listed above are just a few of the examples listed in the Civic Engagement Outreach CSP Guide that is available from the members portal of the GFWC website. Be sure to read this guide as it gives you a lot of great information and examples on how to put our civic duty into action.

As you Civic Engagement and Outreach Chairman, I am looking forward to working with each club.



CHOOSING TO PARTICIPATE

The Power of Civic Engagement

PLANT, The first word in GFWC-MFWC

President's Special Project

Submitted by Lisa A. Harris.

Good Afternoon Ladies,
Today, I want to talk with you about **PLANT**. The first word in President Reid's Special Project of **PLANT** ► **RECYCLE** ► **PICK IT UP**.

Why should we **PLANT**, **where** should we **PLANT** and **what** should we **PLANT**? These are all big questions that can be answered in one word ... Just **PLANT**.

Take a second, close your eyes and image your world without any trees, shrubs, or plants. In your mind's eye you should see a bland world with no animals, no soil, no oxygen, no food, no place to play, very little medicine, and no clean water. But you will breath lots of carbon dioxide, hear noise pollution, have no shelter, drink dirty water and feel excessive heat.

So, what can you do to change this picture? **PLANT**.

Why PLANT?

PLANTing trees, shrubs and plants is one of the easiest and most sustainable, renewable ways to positively affect our environment. Trees, shrubs and plants are our lifeline to cleaner air and a healthier environment.

Trees, shrubs and plant help clean the air we breathe, filter the water we drink and provide habitat to over 80 percent of the world's biodiversity.

Interesting Facts - Forest provide jobs to over 1.6 billion people, absorb harmful carbon from the atmosphere, and are key ingredients in 25 percent of all medicines. Have you ever taken an Aspirin? Sure, you have but did you know it comes from the bark of a tree! Yes, a white willow tree.

Two Interesting Mississippi Facts - Forest covers over 62% of over state or 19.2 million acres. Mississippi is home to more tree farms that any other state and has one of the largest timber economies in all of North America.

Trees, shrubs and plants are the vacuums cleaners of our planet. Through their leaves and bark, they absorb harmful pollutants and release clean oxygen for us to breathe. In urban environments, trees, shrubs and plants absorb pollutant gases like nitrogen oxides, ozone, and carbon monoxide, while sweeping up particles like dust and smoke and reducing the effects of climate change.

Trees, shrubs and plants play a key role in capturing rainwater and reducing the risk of natural disasters like flood and landslides. Their roots systems act like filters by removing pollutants and slowing down the water's absorption into the ground and preventing harmful waterslide erosion and reduces the risk of over saturation and flooding.

Another Interesting Fact - According to United Nations, one mature evergreen tree can capture more than 3,962 gallon of water every year. That's a lot of water.

Trees, shrubs and plants feed us. You can grow your own fruits, nuts and vegetables in your backyard or in pots on your back porch. By **PLANT**ing fruit/nut trees and vegetables in your yard, you can produce abundant food for yourself and your family and perhaps even enough to share with friends, neighbors, and others in your community.

Another Interesting Mississippi Fact - The value of timber harvesting in Mississippi has averaged in excess of \$1 billion per year over the past 20 years.

Trees, shrubs and plants provide homes to hundreds of species of insects, fungi, moss, mammals and other plants.

PLANTs such as Zinnia, Mexican Sunflowers, Milkweed, Butterfly Bushes, Lily of the Nile, Century Plant, Texas Firecracker and many more provide food for Butterflies and Hummingbirds. For bees, who are declining in number every day, such **PLANT**s as lavender, rhododendrons, white clover, heather, bachelor's button and thyme are all great plants to **PLANT**. Don't forget that there is an abundance of fruit and vegetables that only grow as a result of pollination, so it is vital that bees have sufficient means to continue pollinating.

Beside all of these plants will provide color, wonderful smells and some will even provide leaves for cooking.

Planting trees, shrubs and plants are a great way to add a touch of beautiful nature to your property while improving the value of your property.

Where to PLANT?

■ Your Own Land.

If you are ready to convert your open spaces, such as fields or unused pastures, to a pine or hardwood forest. You can check with your local County Forester and he/she will talk with you about available Federal programs and may have a list of consultants that you can contact.

■ Our National Forest & Parks.

You don't own land, so where are you going to **PLANT** trees? There are several companies or foundation that will **PLANT** a tree for you in our National Forest for a donation. The National Forest Foundation, Arbor Day Foundation and A Living Tribute are just three of many companies that will **PLANT** trees

(Continued on page 22)

GFWC Advancement Area - Leadership - Summer Institute

(Continued from page 21)

for you. Visit their websites for more information. **PLANT**ing trees supports wildfire recovery, improves water quality, mitigates climate change, and so much more.

*Another Interesting Fact - By **PLANT**ing 50 million trees on our National Forests, we are investing in healthy forests for today and for future generations.*

■ Urban Green Spaces and Your Home.

Several import reasons for **PLANT**ing trees, shrubs and plants in the right location in the landscape of homes, buildings and other urban spaces are:

- They reduce heating/cooling cost by 10-50% with a few well-placed shade trees. Net cooling effect of one young, healthy tree in urban parks is equivalent to 10 room size air conditioners operating 20 hours a day. Test in mall parking lots showed a 31-degree difference between shaded and un-shaded area.
- **PLANT**ing 100 million trees and shrubs could reduce carbon by an estimated 18 million tons per year, while saving American consumers \$4 billion each year on utility bills.
- It not all about money saving, trees also help us with our ability to cope mentally with life in an urban environment. Being around nature has been shown to reduce the levels of stress hormone in our brains and lower the symptoms of anxiety and depression.
- Provides recreational use: a place to play, meditate, gather, or rest.

With everyone moving from rural to urban, we are losing our urban green trees and plants every day while increasing the amount of concrete, steel and vehicle pollutants. Therefore, we need more trees, shrubs and plants to offset our expanding cities and reduce the urban heat island effect.

By working with your city or town to develop green spaces such as walking

trails, playground or parks you can do your part to expand our green spaces. Check and see if your city is part of the TREE CITY USA program or has a staff horticulturalist. This is a great place to start turning the urban concrete jungle into healthy natural area.

What to **PLANT**?

Before you **PLANT** any trees or large shrubs in your yard, check out these prerequisites:

- Don't **PLANT** near your home foundation, septic system, or underground pipes and wiring. Large trees, ones that grow to height of 70 feet or more, should be planted at least 20 feet from your home. Medium sized trees, those that grow up to 70 feet tall, should be planted at least 15 feet from your home and finally, small trees that don't grown more than 30 feet tall should be planted at least eight to ten feet from your home. Need help locating your underground wiring, visit www.ms811.org or call (800) 227.6477 to submit planned excavation. Yes, planting a tree, building a fence or any other circumstances that include digging in your yard need to be submitted.
- Don't forget to look up for overhead power lines. You will need to check with your local power company for their rules about **PLANT**ing trees, shrubs and plants under or near utility post and lines.

Now **What** to **PLANT** in your Mississippi yard and green spaces. These plants are proven successes in landscapes throughout Mississippi and the South. Choose one of these award-winning plants to add beauty to your Southern landscape and garden.

- Gardenia
- Chinese Snowball
- Cherry plum
- Holly
- Oakleaf Hydrangea
- Japanese Red Maple
- Crape Myrtle
- Indian Summer Black-eyed Susan
- Knock Out roses
- Camellia

- Flowering Dogwood
- Southern Magnolia

While considering what to **PLANT**, here are a few invasive tree species you should NOT **PLANT**. But first, what is an invasive tree species, Invasive alien species are plants, animals, or other organisms that are introduced to a given area outside their original range and cause harm in their new home. Because they have no natural enemies to limit their reproduction, they usually spread rampantly. Invasive alien species are recognized as one of the leading threats to biodiversity and impose enormous costs to agriculture, forestry, fisheries, and other human enterprises, as well as to human health.

- Tree-of-Heaven
- Silktree, Mimosa
- Paper Mulberry
- Chinese privet
- Chinaberry
- Princesstree
- Hardy Orange
- White poplar
- Tallowtree, also known as Popcorn tree or Chinese Tallow

Some of the above trees can be **PLANT**ed in your yard or green spaces, only if you plan to mow all sprouts down to prevent the spread of these trees. Within in month or a year or two, they can take over your entire yard, green space or field. Example of this is the Mimosa, Chinaberry and Popcorn tree.

When picking out what shrubs and plants to **PLANT**. Take these considerations into account. Mississippi has a humid subtropical climate with long, warm/hot summers and mild winters. When **PLANT**ing shrubs and plants in Mississippi, check to see if they will live in our USDA Hardiness Zone of 7 & 8, what is the mature **PLANT** size and will it fit where you want to plant it, what is its intended use, amount of litter cleanup, bloom time and bloom color. Check out this list from Mississippi State University Extension, Native Shrubs for Mississippi Landscapes at <http://extension.msstate.edu/native-shrubs-for-mississippi-landscapes>. A few of the

GWFC Advancement Area - Leadership - Summer Institute

listed shrubs are Red Buckeye, American Beautyberry, Buttonbush, Fringe Tree, Oakleaf Hydrangea, Winterberry Holly, Yellow Native Azalea and Honeysuckle Azalea.

When **PLANT**ing flowering plants, consider these native Mississippi wildflowers and herbs: Black-Eye Susan, Partridge Pea, Purple Coneflower, New England Aster, Yarrow, Milkweed, Butterflyweed, Lady Fern, Sweet William, Hibiscus and Cardinal Flower.

CONCLUSION.

PLANT, what does **PLANT** mean to you? To me . . . as a landowner, a homeowner and a retired Forester, **PLANT** is a way of life. I **PLANT** trees and shrubs in my yard and public spaces for wood supply and wildlife habitat. I **PLANT** in pots and along the house in flower beds and in the yard for color and fruit. I **PLANT** for the bees, butterflies, hummingbird, deer, squirrels, and birds for the pure enjoyment of having nature all around me.

*Another Interesting Fact - To make up for the loss of trees and shrubs in the past decade, we need to re**PLANT** 321 million acres, which entails **PLANT**ing approximately 14 billion trees and shrubs*

every year — for 10 consecutive years.

Do something today that your future self will thank you for! - **PLANT**.

Sources:

- Roosevelt Trail Landscape & Garden Center, <https://roosevelttrailgardencenter.com/gardeningtips/why-plant-trees-shrubs-at-all-environmental-and-benefits-of-fall-planting/>
- Mississippi State University Extension Service, <http://extension.msstate.edu/native-shrubs-for-mississippi-landscapes>
- [Onetree planted.org](https://onetreeplanted.org/), <https://onetreeplanted.org/?url=https%3A%2F%2Fonetreeplanted.org%2Fpages%2Fwhy-trees>
- Mississippi Forestry Association, Mississippi Forestry Facts, [https://cdn.ymaws.com/www.msforestry.net/resource/resmgr/website_files/2020_forest_facts_sheet.pdf#:~:text=NET%20MISSISSIPPI%20FORESTRY%20ASSOCIATION%20Timber%20is%20a%20vital,opportunities%2C%20encourage%20tourism%2C%20and%20create%20environmental%](https://cdn.ymaws.com/www.msforestry.net/resource/resmgr/website_files/2020_forest_facts_sheet.pdf#:~:text=NET%20MISSISSIPPI%20FORESTRY%20ASSOCIATION%20Timber%20is%20a%20vital,opportunities%2C%20encourage%20tourism%2C%20and%20create%20environmental%20benefits%20such)

[20benefits%20such](https://www.gardenguides.com/96589-shrubs-plant-mississippi.html)

- Garden Guides, What Shrubs Do I Plant in Mississippi? <https://www.gardenguides.com/96589-shrubs-plant-mississippi.html>
- A Healthier Michigan, 8 Reasons Why You Should Plant A Tree For Earth Day, <https://www.ahealthiermichigan.org/2017/04/19/8-reasons-why-you-should-plant-a-tree-for-earth-day/>
- A Living Tribute, <https://www.alivingtribute.org/>
- Arbor Day Foundation, <https://www.arborday.org>
- National Forest Foundation, <https://www.nationalforests.org/>
- Tree City USA, <https://www.arborday.org/programs/treeCityUSA/index.cfm>
- Mississippi's Tree City USA, <https://www.arborday.org/programs/treeCityUSA/treecities.cfm?chosenstate=Mississippi> and <https://www.arborday.org/states/documents/Mississippi.pdf>.

Tree Facts

oxygen

A single tree produces approximately 118 kilograms (260 pounds) of oxygen per year. That means two mature trees can supply enough oxygen, annually, to support a family of four.

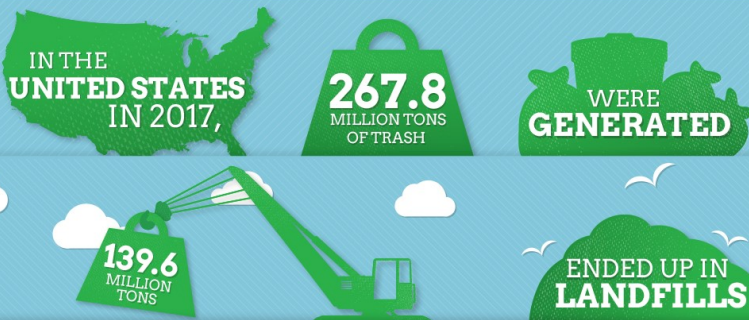


GFWC -MFWC President's Special Project: Plant > Recycle > Pick It Up!

TOGETHER, WE CAN MAKE A DIFFERENCE

SMALL CHANGES IN BEHAVIOR CAN HAVE A BIG IMPACT ON OUR PLANET!

WHEN YOU *THROW* SOMETHING AWAY, WHERE DOES IT GO?



BUT IT DOESN'T HAVE TO

THE IMPACT

RECYCLING HELPS TO CREATE CLEANER LAND, AIR, AND WATER, AND BETTER HEALTH.



RECYCLING AND COMPOSTING HELPS **SAVE NATURAL RESOURCES.**

MAKE A DIFFERENCE TODAY!

IF WE ALL TAKE SMALL STEPS EVERY DAY TO REDUCE THE AMOUNT OF WASTE WE PRODUCE, WE CAN HELP PROTECT THE PLANET FOR GENERATION TO COME.

For more information, visit www.epa.gov/recycle.

Recycling Facts from United States Environmental Protection Agency (EPA)

- The combined recycling and composting rate increased from less than 10 percent of generated Municipal Solid Waste (MSW) in 1980 to 35.2 percent in 2017.
- Without including composting, recycling alone rose from 14.5 million tons (9.6 percent of MSW) in 1980 to 67.2 million tons (25.1 percent) in 2017.
- Composting was negligible in 1980, but it rose to 27.0 million tons in 2017.

YOU CAN DRAMATICALLY
REDUCE THE AMOUNT OF TRASH
THAT IS THROWN AWAY BY
TAKING A FEW EASY STEPS:

REDUCE
THE AMOUNT OF
MATERIALS
YOU USE, WHICH



REDUCES
THE AMOUNT
OF WASTE
YOU CREATE.

REUSE
MATERIALS
WHEN POSSIBLE



RECYCLE
WHENEVER
POSSIBLE



RETHINK
THE MATERIALS

**YOU
USE**

AND
THOSE

**YOU
THROW
AWAY**

BY THINKING ABOUT WHAT WE'RE USING AND HOW TO REDUCE THE WASTE WE PRODUCE, WE CAN HELP CREATE A CLEANER, HEALTHIER ENVIRONMENT.

WHAT IS MUNICIPAL SOLID WASTE (MSW)?

OUR **TRASH, OR MUNICIPAL SOLID WASTE,** IS COMPRISED OF VARIOUS MATERIALS CONSUMERS CONTINUOUSLY THROW AWAY AFTER BEING USED.



MSW **DOES NOT** INCLUDE INDUSTRIAL, HAZARDOUS, OR CONSTRUCTION WASTE.



DID YOU KNOW?

ABOUT **75% OF FOOD**

THAT COULD BE COMPOSTED

ENDED UP IN LANDFILLS

IN 2017, OVER 24 MILLION TONS OF YARD TRIMMINGS WERE COMPOSTED...

MORE THAN FIVE TIMES AS MUCH AS IN 1990.



THE TOTAL AMOUNT OF MSW GOING TO LANDFILLS DROPPED

FROM **145.3 MILLION**

TO **139.6 MILLION TONS**

WHILE THE U.S. POPULATION INCREASED



HOW YOU CAN HELP

In **STORES:**

- Shop for products made with recycled materials.
- Buy items with less packaging.
- Buy refillable, reusable containers.
- Bring your own bags to the store.
- Buy only what you need or what you know you will use (applies to food as well).

At **HOME:**

- Use bags that you already have in your home and recycle bags that you no longer need if they can be recycled.
- Ask to be removed from paper mailing lists.
- Don't throw anything away that can be reused or repaired.
- For unwanted used electronics, try upgrading the device to continue using it. Otherwise, donate or recycle it.
- Print on both sides of paper (and use recycled paper) or don't print at all.
- Compost your food scraps and yard waste.

GFWC Affiliate Organization

GFWC Partners to GFWC Affiliate Organization

From International President Marian Simmon-St.Clair, In preparing for this Administration, I have worked with the Strategic Planning Committee to generate new ideas and to set achievable goals. I am particularly proud of our efforts to streamline and modernize the Federation, and I hope you will help us continue that process. Your leaders have also carefully studied information garnered through member surveys and dialogs, and used it to revitalize our Special Programs, Community Service Programs, and Advancement Plans. Many thanks to the Executive Committee and the Chairmen and Committee Members who brought these plans to fruition.

One of the changes that was made during the streamlining of the Federation was to change Partners to Affiliate Organizations.

According to GFWC website . . . GFWC is proud to work side-by-side with a number of dynamic and impactful organizations. Together, we work to improve our communities and better our world. Our Affiliate Organizations offer unique and customized services, including: materials, speakers, kits, and/or additional information specifically designed for GFWC clubs.

More Information on each Affiliate Organization can be found Under Affiliate Organizations in the digital library of the [GFWC Member Portal](#).

Platinum Affiliate Organizations

- **United National Foundation Shot@Life Campaign.**
(<http://shotatlife.org/>)
Shot@Life, a United Nations Foundation's campaign, seeks to educate, connect, and empower Americans to champion vaccines in order to save children in developing countries. Every 20 seconds, a child dies of a vaccine-preventable disease like pneumonia, diarrhea, measles, and polio. You can help save a child's life by encouraging, learning about, advocating for, and donating vaccines.

- **Shot@Life Resources**
[Fundraising Grant Application](#)

- **St. Jude Children's Research Hospital.**
(<https://www.stjude.org/>)

St. Jude Children's Research Hospital is leading the way the world understands, treats and defeats childhood cancer and other deadly diseases. Everything the organization does is centered on finding cures and saving children. And families never receive a bill from St. Jude.

St. Jude continues the vision of its founder, Danny Thomas, that no child is denied treatment based on race, religion, or a family's ability to pay. By sharing our knowledge freely and exchanging ideas openly, St. Jude inspires more collaboration between doctors and researchers worldwide, and, as a result, more lifesaving treatments for children everywhere.

Treatments invented at St. Jude have helped push the overall childhood cancer survival rate from 20 percent to 80 percent since it opened 50 years ago.

- **St. Jude Resources**

[St. Jude Regional Offices](#)

[St. Jude Donation Wish List](#)

- **Prevent Child Abuse America**

(<http://www.preventchildabuse.org/>)

Prevent Child Abuse America is the leading national, not-for-profit organization whose sole mission is "to prevent the abuse and neglect of our nation's children." They believe that every child deserves to have a great childhood and the chance to grow up in a positive, nurturing environment.

Gold Affiliate Organizations

- **Canine Companions for Independence.**

(<https://www.cci.org/>)

Canine Companions is the oldest and largest assistance dog program providing trained dogs for children, adults, and veterans with physical disabilities. Founded in 1975, Canine for Companions is the leader in the field and has placed more than 6,300 assistance dogs. Canine Companions breeds and trains their own dogs to get the temperament, intelligence, focus, health, and work ethic needed. Their breeding program is highly regarded and looked at by others for best practices. At eight weeks old, puppies are placed with volunteer puppy raisers who raise the puppies for 15 months, teaching basic obedience

commands and socialization skills. Then they return the dog to Canine Companions for four to nine months of professional training to learn the 40+ commands they need to know to do tasks for people with disabilities.

■ Heifer International

(<http://www.heifer.org/>)

For more than 70 years, Heifer International has provided gifts of livestock and environmentally-sound agricultural training to improve the lives of those who struggle daily for reliable sources of food and income. Since 1944, Heifer has helped over 22 million families in more than 125 countries through training in livestock development and livestock gifts that multiply.

• Heifer Resources

[Brochure and GFWC Program Kit](#)

■ Hugh O'Brian Youth Leadership (HOBY)

(<http://www.hoby.org/>)

Founded in 1958, HOBY's mission is to inspire and develop our global community of youth and volunteers to a life dedicated to leadership, service, and innovation. For more than five decades, HOBY has been inspiring young people to make a difference and become catalysts for positive change in their home, school, workplace, and community. HOBY also provides adults with opportunities to make a significant impact on the lives of youth by volunteering. More than 4,000 committed HOBY volunteers plan and execute the programs each year. Due to the selfless efforts of volunteers and the contributions of generous donors, nearly 10,000 students participate in HOBY programs annually.

• HOBY Resources

[HOBY Brochure](#)

■ March of Dimes

(<http://www.marchofdimes.org/>)

The mission of March of Dimes is to improve the health of babies by preventing birth defects, premature birth, and infant mortality. They carry out this mission through research, community services, education, and advocacy to save babies' lives. They help moms have full-term pregnancies and healthy babies, and if something goes wrong, they offer information and comfort to families.

■ Operation Smile

(<http://www.operationsmile.org/>)

Operation Smile is an international children's medical charity focused on restoring children's smiles through performing surgery on facial deformities such as cleft lip and cleft palate. They are dedicated to raising awareness of this life-threatening issue and providing lasting solutions that will allow children to be healed, regardless of financial standing, well into the future. Operation Smile's free surgeries and medical missions are made possible by the thousands of volunteers and donors, throughout the world, who generously contribute time, talent and resources.

■ U. S. Fund For UNICEF

(<http://www.unicefusa.org/GFWC>)

For more than six decades, GFWC has supported UNICEF, the United Nations Children's Fund, in its efforts to ensure the world's most vulnerable children have access to health, and immunization, clean water, nutrition, education, emergency and disaster relief, and more.



Prevent Child Abuse
America



HEIFER
INTERNATIONAL



GFWC Community Service Programs

Our 5 New Community Service Program Areas



Another way in which the Federation was modernize was the streamlining of our Community Service Programs from six programs to five programs.

The new five Community Service Program Areas are

- ♦ ARTS AND CULTURE
- ♦ CIVIC ENGAGEMENT AND OUTREACH
- ♦ EDUCATION AND LIBRARIES
- ♦ ENVIRONMENT
- ♦ HEALTH AND WELLNESS

Listed below is a short description of each of the 5 CSPs and their Challenge Project for the 2020 - 2022 Administration.

ARTS AND CULTURE

The GFWC Arts and Culture Community Service Program encourages members to promote and support art and cultural programs in their clubs and communities, and to expand understanding on every level, from local and regional to national and international. Our goal is to create projects that include crafts, dance, drama, food, music, and other manifestations of art and culture that develop skills, awareness, and appreciation. It is designed to inspire clubwomen and ignite within them a desire to make the world a more beautiful, thoughtful, and caring place. As Edgar Degas once said, "Art is not what you see, but what you make others see."

Challenge Project: Youth Art Contest.

Affiliate Organizations: Heifer International, March of Dimes, Operation Smile, PCAA, St. Jude Children's Research Hospital and UNICEF USA.

GFWC-MFWC Co-Chairmen - Abby May and Amy A. Jacobs (better known as The Twins)

CIVIC ENGAGEMENT AND OUTREACH

In this Community Service Program, four "broad strokes" of Civic Engagement and Outreach are highlighted and encouraged, including: Citizenship; Crime Prevention, Safety, and Disaster Preparedness; the Needy, Hungry, and Homeless; and Our Military Personnel and Veterans. Beyond these suggestions, look within your own community and to the wider world for ways to make a positive impact.

Challenge Project: Support and aid women veterans.

Affiliate Organizations: Heifer International, HOBY, March of Dimes, Operation Smile, PCAA, St. Jude Children's Research Hospital, UNF Shot@Life Campaign, and UNICEF USA

GFWC-MFWC Chairman - Theresa T. Berryhill

EDUCATION AND LIBRARIES

As clubwomen, GFWC members promote education in both children and adults. We aim to help others, while we also continue to learn. Projects in the Education and Libraries Community Service Program are designed to foster schools, as well as other educational institutions and opportunities, and to promote

GFWC Community Service Programs

libraries, literacy, and the love of a good book. Through these efforts, we encourage the growth of individuals and communities at home and around the world.

Challenge Project: Support STEM programs & activities for special needs student.

Affiliate Organizations: Heifer International, HOBY, Operation Smile, PCAA, St. Jude Children's Research Hospital, UNF Shot@Life Campaign, and UNICEF USA
GFWC-MFWC Chairman - Meri F. Newell

- Nutritious food is the first building block of good health. Wise food choices support a healthy body weight, meet nutrient needs, and lessen the risk for chronic disease.
- Continued wellbeing depends on disease prevention, including immunizations and efforts that reduce the development and severity of chronic illnesses such as heart disease, cancer, and diabetes, which are the leading causes of death and disability in the United States.
- Physical and emotional care encourages actions to keep the body and mind healthy throughout life, plus ways to support family, friends, and community members in their efforts.

ENVIRONMENT

The GFWC Environment Community Service Program encourages us to become stewards of the earth by working to preserve the world's resources, protect wildlife and domesticated animals, live sustainably, and beautify our communities and enjoy nature.

Challenge Project: Reduce plastic Use -- Refuse, Reuse, Repurpose, Recycle.

Affiliate Organizations: Heifer International, and UNICEF USA
GFWC-MFWC Chairman - Pam R. Maxwell

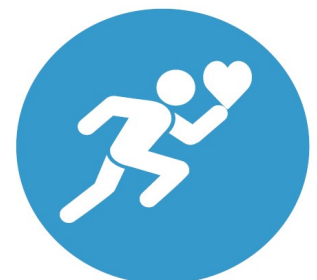
Challenge Project: Physical Funding for mental health programs.

Affiliate Organizations: Heifer International, March of Dimes, Operation Smile, PCAA, St. Jude Children's Research Hospital, UNF Shot@Life Campaign, and UNICEF USA
GFWC-MFWC Chairman - Bethany Flint

If you have any questions or comments on any of the new Community Service Programs, be sure to contact your GFWC-MFWC Chairman for that Program.

HEALTH AND WELLNESS

This Community Service Program aims to explore the various opportunities for awareness and advancement of each of these vital areas:





Announcements

HERE'S WHAT'S HAPPENING!

Important Dates (Overview)

October 2020	
31	Virtual GFWC Southern Region Conference, Huntsville, AL. (Link)
November 2020	
1	GFWC-MFWC State Club Dues must be postmarked by this date each year to receive Honor Club status. (Link)
January 2020	
1	GFWC-MFWC State Club Dues must be postmarked by this date each year for club reports to be judged and to be eligible for awards. (Link)
1	GFWC-MFWC District Club Dues . Please note: District Dues must be sent to your District Treasurer.
For a complete listing of Important Dates, click here .	

Postmark Deadline:

Please note: if the postmark deadline falls on a Sunday or a Holiday, the application/form must be postmarked prior to postmark date.

MFWC



Family



General Federation of Women's Club



1734 N Street, NW
Washington, DC 20036-2990

Phone:
202-347-3168
For membership information:
800-443-GFWC

www.gfwc.org

From GFWC's International President

Dear Fellow Members,

I am thrilled to welcome you to the 2020-2022 GFWC Administration and am so honored to serve as your 53rd GFWC International President. I hope you are as eager as I am to embrace the many opportunities of leadership, service, and fellowship that will be ours over the next two years. I plan to serve both GFWC and our communities, here and around the world, to the full extent of my energy and abilities, and I know that I can count on you to be there with me!

Just weeks ago, GFWC marked 130 years since 63 woman's clubs met in New York City to ratify our constitution and, thus, to launch the first volunteer organization for women. The world has faced many challenges since that time, and now, with illness and unrest spreading throughout our country, we also will be tested.

Like the women who have gone before us, I am certain we will rise to the challenge. Our commitment is as strong as ever.

In preparing for this Administration, I have worked with the Strategic Planning Committee to generate new ideas and to set achievable goals. I am particularly proud of our efforts to streamline and modernize the Federation, and I hope you will help us continue that process. Your leaders have also carefully studied information garnered through member surveys and dialogs, and used it to revitalize our Special Programs, Community Service Programs, and Advancement Plans. Many thanks to the Executive Committee and the Chairmen and Committee Members who brought these plans to fruition.

As clubwomen, we gain strength and confidence from every volunteer experience. When we work together, **no dream is too big**.

The [2020–2022 Club Manual](#) is now available for us to start planning new beginnings, together. After logging in to the GFWC Member Portal, select “My Digital Library” after clicking on the profile icon in the upper right corner of your screen. Alternatively, each section is available individually on the [GFWC website](#). However, the entire Manual as one document is only available through the Portal.

Yours in ***Living the Volunteer Spirit!***

Marian Simmons-St.Clair
GFWC International President



**GFWC International President
Marian Simmons-St.Clair**

Meet Your GFWC Executive Committee for the 2020 - 2022 Administration

GFWC International President Marian Simmons-St.Clair

A passionate and energetic clubwoman since 1989. She has been a member of the GFWC Board of Directors in succeeding administrations since her 2002-2004 term as South Carolina State President, serving as Bylaws Committee Member, Conservation Beautification Chairman, Leadership Committee Member, Treasurer, Secretary, and Second Vice President. She has also assisted with LEADS, presenting, "How to Write a Great Speech."



Marian is a Master Gardener and Master Naturalist who works as a freelance garden writer and photographer for *The Greenville News* and *Carolina Gardener Magazine*. She leads garden tours to Europe and other areas of interest, and produces a gardening blog, Hortitopia. As a horticulture expert, Marian has been a guest on Martha Stewart Radio and other media, and a presenter at symposia.

A devoted volunteer who relishes hands-on opportunities, Marian is an active member of many community service and philanthropic organizations, including Greenville Women Giving. She has been honored by the Rape Crisis Network, SC Wildlife Federation, and SC County Agriculture Agents, and was named a GFWC Woman of Achievement.

Born in Virginia to a military family, Marian lived in Guantanamo Bay, Cuba, and various other locations before studying Liberal Arts at Virginia Tech and moving to South Carolina. Married to Tim St.Clair, the couple has two sons and daughters-in-law, and two adorable grandchildren.

GFWC President-elect Deb Strahanoski

Deb Strahanoski has been a dedicated GFWC Illinois clubwoman for 32 years and is regarded as a great mentor to many. Deb's boundless energy has been apparent during her Federation journey; she has served GFWC Illinois in various roles on the Board of Directors including Director of Junior Clubs 2000–2002, President Elect/Dean of Chairmen, President 2008–2010, and currently serves on the Leadership Committee.

Her GFWC leadership positions have included Membership Chairman, Community Improvement Program Chairman, Capital Campaign Chairman, Treasurer, Secretary, Second Vice President, and First Vice President. Currently Deb serves as GFWC President-elect, where she enthusiastically and effortlessly leads the GFWC State Presidents.



Deb is also a highly respected volunteer and leader within her community. She has served Easterseals and Prevent Child Abuse Illinois at both the regional and state levels and has been honored with the coveted Friends of Children Award by PCA Illinois.

A member of the National Easterseals Development Leadership Network and Brand Marketing Council, Deb has been employed with Easterseals for the past 15 years, managing all annual fundraising activities

(Continued on page 35)

Meet Your GFWC Executive Committee for the 2020-2022 Administration

(Continued from page 34)

and events for the Joliet Region. She credits much of her professional success to all she has garnered through Federation.

Deb also continues to assist her husband Bill in his public accounting office, which they have owned since 1984. Married for 38 years, they have two children and two grandchildren.

Her visionary leadership, extensive experience, and infectious enthusiasm have inspired new and veteran members alike.

GFWC First Vice President Suellen Brazil

Suellen Brazil applies the national perspective, organizational expertise, and collaborative skills developed throughout 47 years in diverse leadership roles. With a rich background and extensive experience, Suellen is a highly enthusiastic, dynamic leader whose dedication and passion are unwavering.

From 1980–84, Suellen served as GFWC Alabama Director of Junior Clubs, then GFWC Junior Education Chairman. Suellen then became HOBY International Leadership Seminar National Volunteer Chairman, with 12 years of national service and exponential growth within the Hugh O'Brian Youth Foundation.



During 45 years on the GFWC Alabama Board, Suellen served all appointed/elected offices, including State President (1998–2000) where policy improvements she championed impact Alabama today. She organized leadership training opportunities, along with seminars at the Alabama State Capitol, and implemented state/district LEADS programs.

After being State President, Suellen successfully led several GFWC programs, and GFWC Southern Region as treasurer, secretary, vice president, and president. Focused on strengthening international connections, she welcomed the Woman's Club of Aruba to Southern Region. That international commitment continues today. As GFWC Leadership Chairman (2012–14) she oversaw a 73% increase in GFWC State LEADS programs and provided numerous leadership resources.

A native Alabamian, she and husband Billy have two sons. Retired after 44 years with Baldwin County Schools, her final position was Executive Elementary Administrator, supervising 28 schools and 18,000 students. Working with domestic violence prevention, homeless, and veterans keeps her grounded in grassroots service.

GFWC is excited to enter a new fundraising agreement with Starfish Project for the 2020–2022 Administration. Starfish Project is an organization that supports women escaping human trafficking and exploitation. Look for more information in the October issue of the Heartbeat.



Meet Your GFWC Executive Committee for the 2020-2022 Administration

GFWC Second Vice President Wendy Carriker

A dedicated clubwoman since 1985, Wendy Carriker has been involved in volunteer and leadership opportunities throughout her community, state, and region.

Wendy served as GFWC-NC Director of Junior Clubs (2000-2002) and her service to GFWC-NC continued as she served in various positions. Starting in 2004, she was a State Officer, until serving as State President 2012-2014. During her Administration, a new membership video was distributed to clubs across NC and her Special Project's goal was met and exceeded, with over 17 million meals provided to food-insecure children. She led the GFWC Communication and Public Relations Committee as Chairman 2014-2016.



An active volunteer with Victory Junction Camp, a camp for chronically ill children, Wendy volunteers each summer as a camp counselor, is on their speakers' bureau, and helps provide handmade bears that campers take home.

Wendy is highly respected in her community. She was elected to the Mount Airy City Schools Board of Education in 1996, where she has served as Chairman since 2004. She is committed to serving the students of NC through her membership with the NC School Boards Association and the NC Association for Scholastic Activities.

The owner of Wendy Jane Creations and Megan's Mutt Munchies, she stays busy creating and baking. Married for 40 years to her husband Chip, they have two daughters.

GFWC Secretary Jolie R. Frankfurth

"Don't be the woman who fears something—be the woman who is excited to be a part of creating its future." What incredible adventures Jolie has been part of while serving as a GFWC Officer and 23-year clubwoman. As a member of the GFWC Board of Directors, she has been an integral part of decisions that will take this organization into the future.

Jolie is a graduate of the University of South Florida with a Master's in Educational Leadership and Bachelor's in Business Education. Teaching at the college level has enhanced her abilities to train adult learners in leadership and membership efforts.



Jolie utilizes her experiences as Past President of several GFWC clubs and Advisor of the Juniorette club to help members recognize leadership building techniques and the value of creating new club models. Jolie's style of leadership is unique; it fosters change, builds loyalty, and encourages others to be a part of the decision-making process.

If you "friend" her on Facebook, you will see that she loves to fish, paddle board, and go on adventures. Although she spent her young life traveling in a military family, Jolie and her husband Tom have lived in Tampa almost 28 years. They have two grown children, Darby and Derek.

Jolie's leadership vision is for members to choose to commit, to work hard, to focus on the big picture of community service, and be resilient in their efforts to making communities a better place.

Jolie will strive for each State Federation to pursue new and energized club and leadership models—the key to making GFWC's future bright and strong.

Meet Your GFWC Executive Committee for the 2020-2022 Administration

GFWC Treasurer Mary Beth Williams

Mary Beth served as 2018–2020 GFWC International Outreach Chairman, on the GFWC Leadership Committee, and is a 2012 LEADS graduate. She served as GFWC Colorado President (2014–2016) and was Charter President of Babs Inspirations. Other GFWC Colorado roles include Chairman of Leadership, International Outreach, Signature Project, and Newsletter Editor, and Club President among other club positions. She started the Colorado Leadership program and launched her club's "After 5" group. For the Western States Region, she served twice as the Fundraising Chairman. Mary Beth traveled to Zambia with UNICEF to witness firsthand the work done by this Affiliate and attended the UN Foundation Shot@Life Summit for three years.



She has been involved in various organizations over the years holding numerous leadership roles, most notably: president of a local historic theater friends group, co-chair of a major community science symposium, serving as PTA president at four schools including opening two new schools, serving on various United Way committees, president of the local senior center friends group (formed 501(c)(3) for the center), and currently serves as president of the Board for a historic child care center for low income children.

Mary Beth has both an undergraduate and graduate degree in Agricultural Economics. She has worked for the Foreign Agricultural Service, Colorado School District 11, and earned her Certified Volunteer Accreditation. Married to her husband Larry for 40 years, they have a son and daughter in-law with two children, and a daughter, a GFWC Massachusetts member.

GFWC Director of Junior Clubs Kristina Higbee

A dedicated clubwoman for over 16 years, Kristina is currently serving as GFWC Director of Junior Clubs. She has served on the GFWC Board of Directors for the past six years. She is a past GFWC-WI State Director of Junior Clubs, receiving an Outstanding Director of Junior Clubs award in 2016. She has served as Convention Chairman and Nominating Chairman for the Great Lakes Region. Joining the Oconomowoc Junior Woman's club in 2004, she has served in many offices including club president twice. She received the GFWC-WI Junior of the Year award in 2017. She is a 2009 LEADS graduate.



Kristina has been a scout leader for over 10 years, earning the council District Award of Merit in 2015 and Silver Beaver Award in 2019. She is the Committee Chair for Venturing Crew 196 and has served as a Wood badge staff member. She is a lifelong Girl Scout, earning her Silver Award in her youth. She is a member of First Congregational UCC, Oconomowoc where she has served on the board of directors for the preschool, as a Sunday school teacher and worked with the scouts of her church to earn their scout religious emblem awards. She earned the BSA God & Service award in 2016.

Kristina is an accomplished artist and photographer. She owns a glass studio and also works for Lifetouch photography.

Married to her best friend Michael, they have three wonderful children with whom they enjoy many adventures, whether it is exploring the National Parks or camping with the scouts.

Cynthia Kay Geis
2020-2022 GFWC Southern Region President



September 1, 2020

Dear GFWC Southern Region Members,

You are enthusiastically invited to attend the October 31, 2020, virtual GFWC Southern Region Annual Meeting beginning at 1 p.m. Eastern Daylight Time (EDT), via Big Marker. As this is a virtual meeting, there will be no need to worry about travel arrangements, hotel and meal reservations, or what to pack! Additionally, you'll be home in time for Trick or Treat!

In addition to conducting essential Region business, our conference agenda will feature presentations given by our GFWC chairmen and committee members. We'll also hear reports from our State Federation Presidents and Junior Directors from Alabama, Florida, Georgia, Mississippi, and South Carolina and our international affiliates in Aruba and Belize.

Our very special guests are our 2020-2022 GFWC International President, Marian Simmons-St.Clair, and GFWC President-elect, Deb Strahanoski. These two dynamic leaders are certainly "lighting the way" during this most unusual time in GFWC history and will share their visions for GFWC and update us on happenings in our wonderful organization. We'll also have greetings from the GFWC Officers within our Region.

It won't be all business – we're planning virtual tours, games, and door prizes.

There will also be time to socialize – beginning with a Zoom "Halloween House Party" beginning at 7 p.m. EDT on Friday, October 30. So, pour yourself a quarantini (or a glass of sweet tea) and join us.

Registration is open now on the GFWC Website at the MemberSuite Portal under "Events." Select "Browse Events." Select "2020 Region Conferences." Once you begin the process, you are allowed to select your Region. If you have a challenge with the Portal, please contact GFWC at gfwc@gfwc.org during business hours. There is a registration fee of \$35.00, with \$25.00 to GFWC; \$10.00 to Southern Region.

Whether we're live or remote, you don't want to miss time with your GFWC sisters. We're saving a seat for you and look forward to "seeing" you on October 31st!

Yours in Federation friendship and service,

Cynthia Kay Geis
2020-2022 GFWC Southern Region President

TORONTO

2021 GFWC ANNUAL CONVENTION

JUNE 26 - JUNE 28



JOIN US AT THE SHERATON CENTRE TORONTO

**JUNE 25
LEADS**

**Board of Directors Meeting
GFWC Canada Night**

**JUNE 26
Opening Ceremony**

**JUNE 28
Gala Banquet**

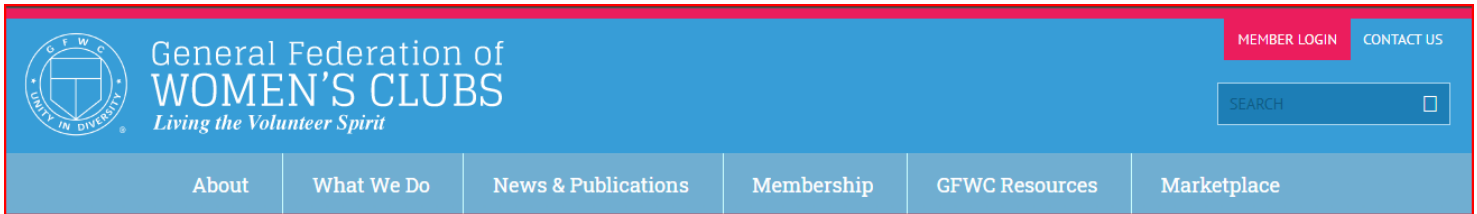
GFWC News & Notes

GFWC Resources Move to the Member Portal

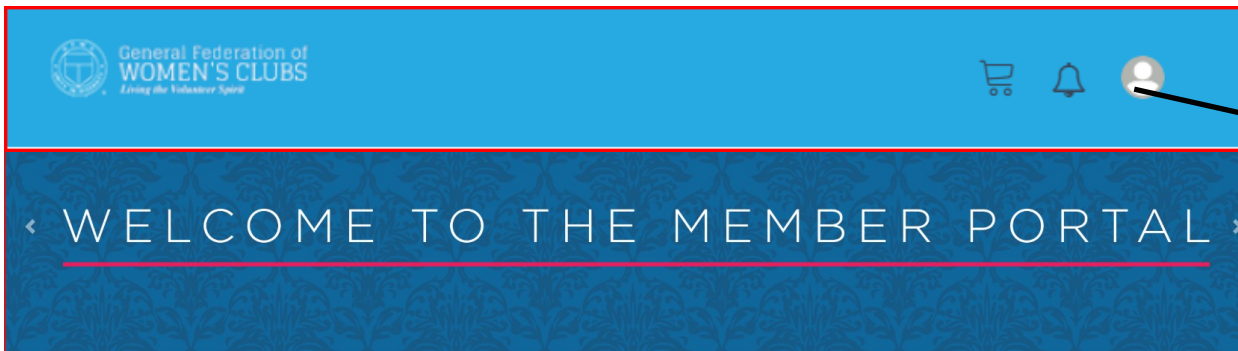
Among the many member benefits offered, GFWC's Member Portal has a more sophisticated documents library than www.gfwc.org. MemberSuite, the system hosting the Member Portal, allows you to download documents much faster! And after August 1, GFWC resources will only be available by logging into the GFWC Member Portal and clicking on "My Digital Library."

There are two ways to access the GFWC Member Portal.

1. Click on this link: www.gfwc.org/memberportal
2. Go to GFWC website (www.gfwc.org), then click on the pink "Member Login" box on the top right of the website.



Once you reach this page . . .



Profile Icon

Logging in for the First Time

The first time you log in to the Member Portal, there are a few things to remember:

- Select the option to "Allow Cookies."
- Use your full email address as your username (all lowercase).
- Select the "Forgot my password" option at the bottom. You will receive an email with information on creating your profile and setting a password.

To create a profile, select "Need an account? Sign Up" link at the bottom. You will be prompted to enter a username and password. Passwords include an uppercase letter, lowercase letter, number, special character (!@#\$), and are at least eight characters long.

Logged in Before

Have you successfully used the Member Portal before but are having trouble using your username or password?

- Remember your password is case sensitive. Passwords include an uppercase letter, lowercase letter, number, special character (!@#\$), and are at least eight characters long.
- If you enter an incorrect password, try clearing your browser history, your cache, or cookies before attempting to log in again.

Subscribe to News & Notes

Simply provide your name, mailing address, email, and club name to gfwc@gfwc.org!

Support GFWC

Support GFWC When You Shop at Amazon.com

Help strengthen GFWC's volunteer programs the next time you shop at Amazon.com by making your purchases through GFWC's Amazon.com affiliate link. The link enables members to direct **up to 0.5% percent** of your total purchases to the Federation. For more information, [click here](#).

amazonsmile
You shop. Amazon gives.

Let Your Flag Fly

The time has never been better to let our Emblem-spangled banner wave. GFWC Flags come in 3'x5' and 4'x6' sizes. You can also order a GFWC Podium Banner or Road Sign. Prices start at \$35.00. The GFWC flag is a perfect, highly visible, and easily portable way to brand any event, publicity table, or speaking engagement. Go to [GFWC Marketplace](#) to place your order today.



GFWC Marketplace: 2020 -2022 Administration Pin

Have you ordered your 2020–2022 Administration Pin yet? It's an initial step you can take in joining this Administration to light a path toward the future! This brightly-colored pin features a rising sun, a symbol of new beginnings. The back is magnetic for your convenience. Celebrate the start of the 2020–2022 Administration and order your pin (\$5.00) in [GFWC Marketplace](#).



Renew Your Magazine Subscription Online

A new feature has been added to the [GFWC Member Portal](#) that allows you to renew your one-year GFWC *Clubwoman Magazine* subscription online! Once logged into the portal, go to the Marketplace tab and then select "Education Add-Ons." A one-year *Clubwoman* subscription should then be the only option on the next page.

GFWC Notebook

Get creative with service projects that follow local social distancing guidelines. This unique spiral-bound notebook is the perfect place to write your innovative ideas on how to make a difference in GFWC's five new Community Service Program areas: Arts and Culture, Civic Engagement and Outreach, Education and Libraries, Environment, and Health and Wellness! It features a 1929 cover of *General Federation News* that has a beautiful illustration of GFWC Headquarters. Get yours for \$12 in the [GFWC Marketplace](#).

