



# GFWC- MISSISSIPPI FEDERATION OF WOMEN'S CLUBS, INC.

FALL 2011

VOLUME 2, ISSUE # 3



GFWC-MFWC  
2407 NORTH STATE  
STREET, JACKSON,  
MS 39202  
WWW.GFWC-MFWC.ORG

## 2010-2012 ADMINISTRATION OFFICERS

TAMMIE MCCOY  
PRESIDENT

SUZANNE POYNOR  
PRESIDENT-ELECT

LIBBY EVERETT  
VICE PRESIDENT

SUE ADDY  
RECORDING  
SECRETARY

SHIRLEY HILBURN  
TREASURER

THE MISSISSIPPI  
FEDERATION OF  
WOMEN'S CLUBS,  
INC., A PROUD  
MEMBER OF THE  
GENERAL  
FEDERATION OF  
WOMEN'S CLUBS



www.gfwc.org

## A MESSAGE FROM GFWC-MFWC PRESIDENT MCCOY

Dear Fellow  
Clubwomen,

I know that by now your club year is well under way and that you are preparing for the holidays. It has been fun learning about all of the programs and projects that you have planned for this year. I never stop being amazed by your hard work.

The last three months have been busy in MFWC. In late August, Judy, JoAnne, and I attended the GFWC board meeting in Seattle. We enjoyed renewing friendships and learning more about federation. Carlene had planned an amazing four days with an outstanding finale: A Tribute to Lives Lost on 9.11.

Then in late October, nineteen Mississippians joined me at the Southern Region Conference in

Tampa. We had a wonderful time seeing our Southern Sisters and certainly enjoyed the festivities. The pirates from Mississippi were the best "dressed" and enjoyed visiting Buccaneer Stadium. We even "raided" the pirate ship in the rain.

JoAnne did an outstanding job as our SR Treasurer. As you remember, at our 2011 convention, MFWC endorsed her for the office of Southern Region Secretary for the 2012-2014 administration. She was elected to that office and will be installed at the GFWC convention in June. Congratulations JoAnne!!!

Suellen was so glad to have Judy by her side when Carolyn's committee recommended numerous bylaw changes. Thanks Judy



GFWC-MFWC President  
Tammie McCoy

and Carolyn for keeping us on track and up to date.

We are fortunate to have so many creative ladies in MFWC. Our Mississippi reception was a huge success. "Batty for Federation" was in honor of Celia Fisher, our Mississippi Jennie winner. A great time was had by all. The decorations and food was outstanding: Lisa, Terrie, Rannie and Sherry made sure that everything was just so and all the Mississippi

(Continued on page 2)



*The GFWC-MFWC  
Newsletter is published by  
the GFWC-MFWC.*

*All submissions are wel-  
come. Photographs are en-  
couraged. E-mail or mail  
articles and  
photos to  
Lisa A. Harris  
822 SCR 115 S  
Raleigh, MS 39153  
laharris@bughes.net  
(601) 940-1519*

## Star Pin Recruitment System Update

In order to better recognize the growing number of clubwomen who have recruited more than 25 new members, GFWC has expanded and updated the Star Recruitment Pin system. Colored discs worn behind the original star pins allow GFWC to recognize 10 levels of recruitment success.

Federation membership is a gift, so it's important to recognize members who love to pass that gift along to others! For more information, contact your State Membership Chairman or email [GFWC@GFWC.org](mailto:GFWC@GFWC.org)

*(Continued from page 1)*

ladies pitched in to help. If you see Penny Barr, ask her about homemade beverages, she will have a story to tell!!! Thanks also to Suzanne, our outfits were great—you must see the pictures to believe her handy creative work.

Thanks to all of the clubs who supported our day of service with our Southern Region sisters: the sock project. It was an overwhelming success and

a very worthy service.

I cannot wait to hear about our membership; Suzanne and I are looking forward to paying a high bounty for new members. We will keep you posted on the overall number of members gained.

I hope that each of you have a wonderful holiday season. I am thankful for each of you and your dedication to community service. Merry Christmas and Happy New Year.

Thanks for all of your help in Feeding Fellow Mississippians during this special season. Hope to see each of you soon. Your voices are being heard!! Remember WE are TEAM MFWC: One Strong Voice for Volunteerism.

Love in Volunteer Service,

*Tammie*

## Membership Motivation!!

By Suzanne Poynor, President-elect and Membership Chair

At the Southern Region Conference in Tampa a MEMBERSHIP Workshop was on program! Two of our MFWC Clubwomen, Jeanith Burdine and Abby May, participated in a Membership Skit. They were quite the actresses! The Workshop included information on how to orient and engage members, how to develop leaders, and how to cure some common club ailments. The skit is available. Just let me know and I will get it to you.

These Membership Motivators will help keep our members happy, motivated, and eager:

Newly Recruited Members:

- Understand and align their interests with opportunities in the club that excite them. A good way to discover interests is to have them complete a *GFWC Member Profile and Interest Sheet*.
- Use a "Federation Friend", an established member, to work with the newer member to answer any questions, explain club procedures, history, and Federation Facts.
- Be a cheerleader by acknowledging contributions of time and talents.
- Use the "Membership Satisfaction Survey"

about six months after a member joins.

Resources can be found in the Resource Section of the GFWC Membership Advancement Guide at [www.GFWC.org/ClubManual](http://www.GFWC.org/ClubManual).

Established Members:

- "Interest Profiles" should be completed annually.
- Establish a sense of community. Friendship bonds tend to create more participation in club projects and activities.
- Projects should be worthwhile and promote interest of members.

*(Continued on page 17)*



# WANTED! ALIVE!



## MFWC CLUBWOMEN REWARD OFFERED!

By Membership Task Force:  
**\$10 per member net increase**

### Membership Contest Rules:

- Contest begins July 1, 2011 to December 31, 2011.
- New member information must be reported with dues postmarked by December 31, 2011 to Shirley Hilburn.
- Rewards will be presented at 2012 District Conventions.

Reward offered by:  
the authority of GFWC-MFWC , Inc.,  
GFWC-MFWC President Tammie McCoy and  
Membership Chairman Suzanne Poynor.



## 2012 CLUB YEAR DUES FORM UPDATED

The Dues Form has been updated to include donations to the MS LEADS program. Please download and use this new form. Download from [http://www.gfwc-mfwc.org/pdf/GFWC\\_MFWC\\_Forms/GFWC\\_MFWC\\_Dues\\_Form06242011.pdf](http://www.gfwc-mfwc.org/pdf/GFWC_MFWC_Forms/GFWC_MFWC_Dues_Form06242011.pdf)



Visit the GFWC-MFWC Batesville Woman's Club on the web at: <http://mfwc-batesvillewomensclub.weebly.com>

Does your club have a website, let us know and we will add your link on the GFWC-MFWC website.

# MFWC NEWS

## PHOTOGRAPHS ARE NEEDED!!

GFWC-MFWC pictures are needed. The pictures you submit will be used for the following projects, the website, the newsletters (General and Juniorette), the Mississippi Clubwoman, PowerPoint presentations, dvd movies and the President's scrapbook.

When submitting your pictures, please include the following information with each picture: name of activity, people in picture, name of club(s), location, who took the picture and date taken.

Please submit all pictures to Lisa Harris at [laharris@hughes.net](mailto:laharris@hughes.net).



## COMMUNICATIONS

### Email Address Needed

If you know someone who would like to receive GFWC-MFWC updates, notes, news and other items by email, please have them to email Lisa Harris at [laharris@hughes.net](mailto:laharris@hughes.net) and ask to be placed on the mass communication listing.

## MEGAPHONE CLUBS

Check out our new membership page at <http://www.gfwc-mfwc.org/>



## 2012 - 2014 Elected Officer Positions

The deadline for submitting suggestion for candidates for the 2012 - 2014 elected officer positions is January 1, 2012.

Cubs are encouraged to send suggested names of qualified clubwomen to Nominating Committee Chairman June Vaughn, 89 CR #257, Bruce, MS 38915.





# MFWC NEWS

## *2nd Annual Rudolph Run 5K Walk/Run, 10K Run, and Family Fun Run*

**Historic Downtown Pontotoc, Mississippi**

**Special Guest, Patrick House  
Winner of Biggest Loser Season 10**

**Hosted by the Pontotoc Woman's Club**

**Saturday, December 10, 2011**

**10K Run 8am**

**5K Walk/Run and Family Fun Run 8:15am**

Register online beginning August 1<sup>st</sup> at

**[www.pontotocwomansclub.com](http://www.pontotocwomansclub.com)**

**[www.racesonline.com](http://www.racesonline.com)**

For more information,  
email Emily Gibbs at  
**[rudolphrun@pontotocwomansclub.com](mailto:rudolphrun@pontotocwomansclub.com)**



## MFWC FACTS

Taken from "A History of the Mississippi Federation of Women's Clubs 1898-1998" by Tom-mye Hogue Rosenbaum.

### **The Early Years 1898-1912**

- \* Mrs. D. N. Hebron of the Vicksburg Twentieth Century Club was the first president of the MFWC. She was president from 1898-1900.
- \* Most of Mrs. Hebron's term was devoted to organizing the Federation.
- \* During the term of Mrs. A. G. Weems, our second president, several accomplishments were noted:
  - More clubs were organized.
  - Traveling libraries were enhanced.
  - Purchased and distribution of itinerant pictures and art galleries.
  - Organizing literary societies in our schools, purchasing playground equipment and inau-

(Continued on page 12)



### **GFWC Sock Project Information Needed**

Would each club that participated in the Sock Project as part of the Make A Difference Day, please send to GFWC-MFWC Domestic Violence Awareness Chair Jeanith Burdine the following information: number of sock collected, number of clubwoman participating and number of hours involved in purchasing socks, making labels and delieving the socks. Please send the information by email to [burdineoo@dtcweb.net](mailto:burdineoo@dtcweb.net).

## STUFF YOU DIDN'T KNOW?

- \* Everyday more money is printed for Monopoly than the U. S. Treasury
- \* Men can read smaller print than women can; women can hear better than men.
- \* Coca-Cola was originally green.
- \* It is impossible to lick your elbow.
- \* The State with the highest percentage of people who walk to work: Alaska.
- \* The percentage of Africa that is wilderness is 28 %. The percentage of North America that is wilderness is 38%.
- \* The average number of people airborne over the U.S. in a given hours: 61,000.
- \* The first novel ever written on a typewrite was Tom Sawyer.
- \* The San Francisco Cable cars are the only mobile National Monuments.

(Continued on page 7)

# MFWC NEWS

## Tour of Homes

The GFWC-MFWC Florentine Clubs of Florence invite you to their 16th annual Christmas Tour of Homes on Sunday, December 4, 2011 from 1:00 p.m. to 5:00 p.m. The tour will consist of four lovely homes, three businesses and a silent auction to be held at the City Hall. Tickets are \$10.00 each and the proceeds will go toward community projects and improvements in the Florence area. Refreshments are include in the cost of the ticket.

For more information, call Diane at (601) 454-5350.

Hope you can join us as we are getting into the holiday spirit.



# MFWC NEWS



The following GFWC-MFWC Clubs have facebook pages. Like them on Facebook to stay connected:

- \* Batesville Junior Woman's League
- \* Dixie Daisy Juniores
- \* Fine Arts Club of Bruce
- \* GFWC-MFWC
- \* GFWC-MFWC Juniores
- \* GFWC-MFWC Homochitto Heritage Club, Inc.
- \* Pontotoc Woman's Club
- \* Twentieth Century Club of Bruce

If you club has a facebook page and would like to share with other MFWC clubwoman, send an email to laharris@hurghes.net and I will get the word out to everyone.

## DONATE A MAMMOGRAM.

ALL YOU HAVE TO DO IS CLICK. It takes less than 10 seconds to do this. Please help. The

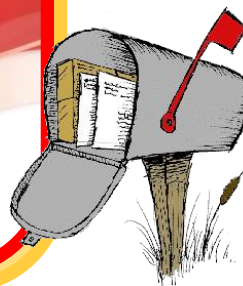
Breast Cancer site is having trouble getting enough people to click on their site daily to meet their quota of donating at least one free mammogram a day to an underprivileged woman. It takes less than a minute to go to their site and click on 'donating a mammogram' for free (pink window in the middle). This doesn't cost you a thing. Their corporate sponsors /advertisers use the number of daily visits to donate mammogram in exchange for advertising. Here's the web site! Pass it along to people you know. [http://](http://www.thebreastcancersite.com/)

[www.thebreastcancersite.com/](http://www.thebreastcancersite.com/)



(Continued from page 6)

- \* Each king in a deck of playing cards represents a great king from history:
  - Spades - King David
  - Hearts - Charlemagne
  - Clubs - Alexander the Great
  - Diamonds - Julius Caesar
- \* If a statue in the park of a person on a horse has both front legs in the air, the person died in battle. If the horse has one front leg in the air, the person died because of wounds received in battle. If the horse has all four legs on the ground, the person died of natural causes
- \* In Shakespeare's time, mattresses were secured on bed frames by ropes. When you pulled on the ropes, the mattress tightened, making the bed firmer to sleep on. Hence the phrase... Good-night, sleep tight.



## CALL TO ACTION: NATIONAL MOVEMENT FOR AMERICA'S CHILDREN

Join with GFWC in support of the newly-formed National Movement for America's Children. The NMAC is focused on drawing national attention to develop a comprehensive strategy to ensure that every child has an equal opportunity to succeed. Through online forums and town hall meetings, NMAC will facilitate conversations on how to change both policy and culture for the benefit of America's children. Go to

[www.MovementforChildren.org](http://www.MovementforChildren.org) and pledge your support. For more information, go to [www.GFWC.org](http://www.GFWC.org)



# GFWC NEWS

## SUPPORT THE SAFE TEEN ACT

According to reports, one in four adolescents reports emotional, physical, or sexual dating violence. Last week, bipartisan legislators introduced the [Stop Abuse for Every Teen Act](#), which recognizes the severity of teen dating violence throughout the country and allows schools to use existing federal funding for prevention and education. This bill does not call for monetary or budgetary considerations. Contact your senator and representative to encourage their support of this vital bipartisan legislation. For more information and to take action, go to [www.GFWC.org](http://www.GFWC.org).

## CONSERVATION PROJECTS FROM GFWC CLUBS

Looking for a conservation project? GFWC Conservation Community Service Program Collaboration Chairman Dotti Zimmerman compiled a list of great ideas from GFWC clubs throughout the country. From fashion shows and nature classrooms to crayon recycling and gardens, you're certain to find a project for your club. [Read the full program posting for more information .](#)



## WIN UP TO 5,000 FOR COMMUNITY IMPROVEMENT

A GFWC tradition since 1955, the Community Improvement Program Award (formerly the Community Improvement Contest) recognizes clubs for what they do best—serving individual communities around the world and enhancing the lives of others by meeting community-specific needs. This award is the heart and soul of GFWC. If you haven't done so already, now is the time to identify a community need that your club can address through a Community Improvement project. Chances are, your club is already working on a project that is eligible for the award. For more information, go to [www.GFWC.org/GFWCMembers](http://www.GFWC.org/GFWCMembers).

## AWARD YOUR MEMBERS WITH GFWC CERTIFICATES

Your members contribute incredible accomplishments in your communities every day—it's only fitting that they be recognized. Did you know that GFWC provides a variety of recognition resources, including a customizable GFWC certificate template? [Click here to access these certificates.](#)



# GFWC NEWS

## FACE THE CHALLENGE WITH INMED

GFWC International Outreach Community Service Program Partner INMED Partnerships for Children is launching its **Face the Challenge Campaign** with GFWC. Join with INMED to help rescue children around the world who are suffering daily, and train them as future leaders. You can help by going to [www.INMED.org](http://www.INMED.org) and filling a challenge campaign request form. You'll receive a campaign kit with more information on how to plan and execute a fundraising and awareness event. For more information, contact campaign coordinator Doris Girgis at [DGirgis@INMED.org](mailto:DGirgis@INMED.org) or 703-729-4951 ext. 238.

## GIVE YOUR TIME TO A GREAT PROJECT

The American Mural Project, a GFWC Arts Community Service Program Partner, invites GFWC members to be a part of a celebration of American ingenuity, productivity, and commitment to work with the largest collaborative piece of indoor artwork in the world. In honor of the countless hours of volunteer time that clubwomen donate, GFWC will be honored in the mural with watches.

Send watches, along with a \$1 donation for each watch, to P.O. Box 538, 100 Whiting Street, Winsted, CT 06098. For more information, go to [www.WallOfAmerica.org](http://www.WallOfAmerica.org).

## RETURN TO GFWC



For personal or club correspondence, let your Federation pride show as your letters fly through the postal system. [GFWC Address Labels](#) are now available through the GFWC Marketplace. These professional labels are full color and feature the GFWC emblem, and shipping costs are included. Go to [www.GFWC.org/Marketplace](http://www.GFWC.org/Marketplace) to order.

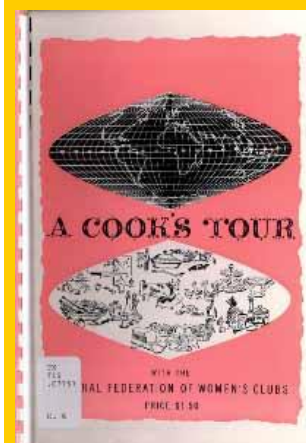
## LEARN ABOUT BONE HEALTH

GFWC Home Life Community Service Program Partner National Osteoporosis Foundation invites you to participate in its *Healthy Bones, Build Them For Life* webinar series. Upcoming webinar topics will cover safe yoga practices and risks and benefits of osteoporosis treatment. Go to [www.NOF.org/Webinars](http://www.NOF.org/Webinars) to register, or call 1-866-702-3278.



## HISTORIC FARE FOR YOUR TABLE

Do you have your full Thanksgiving or Christmas menu ready to go? If not, consider using recipes from *A Cook's Tour*, a 1957 GFWC publication. The GFWC Women's History and Resource Center has the full text of this cookbook [available online](#). Go to "Click here to read the full text," and then explore more WHRC resources through the [online catalog](#).



## DONATION LABELS

[GFWC Donation Book Insert Labels](#) promote book donations to your local libraries. Be a part of this unique way to generate recognition for your generous contributions to literacy. Go to [www.GFWC.org/Marketplace](http://www.GFWC.org/Marketplace) to order.



## CELEBRATE YOUR CLUB'S BIRTHDAY

Is your club celebrating a milestone anniversary (25, 50, 60, 70, 75, etc. years)? To receive a certificate and letter signed by International President Carlene Garner acknowledging your club's accomplishment and to be featured in an upcoming issue of *GFWC Club-woman Magazine*, please email [GFWC@GFWC.org](mailto:GFWC@GFWC.org) or call 1-800-443-GFWC (4392).

## IT'S A VOLUNTEER THING

GFWC—It's a Volunteer Thing® Post-Its are back with an updated look. These stickies are the perfect way to keep organized, put reminders anywhere, or send a little note home in an orientation folder for new members. 50 sheets per pack. Go to [www.GFWC.org/Marketplace](http://www.GFWC.org/Marketplace) to place an order

# GFWC NEWS

## WOMAN BEAN PROJECT

GFWC is proud to announce our latest endorsed fundraiser: **Women's Bean Project**. Founded in 1989, the Bean Project is dedicated to helping women break the cycle of poverty and unemployment by providing stepping stones to self-sufficiency through social enterprise. Women who participate in the Bean Project receive employment training in the areas of gourmet food production and jewelry-making. Partner with this worthwhile organization and help your club at the same time by selling some of the beautiful jewelry they create. Literature will be mailed to club presidents in the coming weeks. Visit [www.GFWC.org/Fundraising](http://www.GFWC.org/Fundraising) for more information

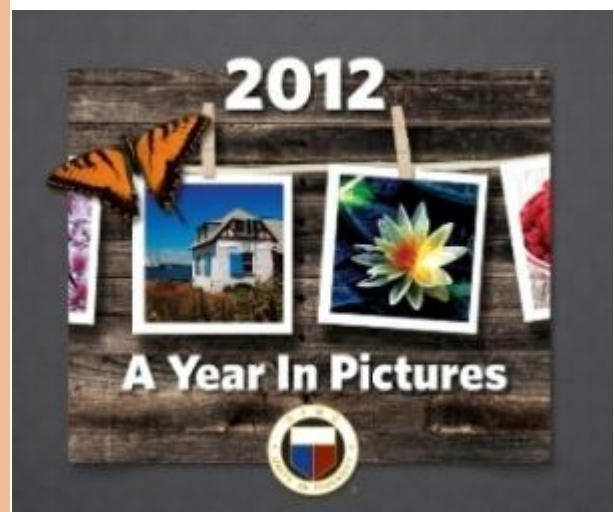
## THE CUTEST CALENDAR AROUND

GFWC Home Life Community Service Program Partner **Canine Companions for Independence** has been training and placing assistance dogs for children, adults, and veterans with disabilities since 1975. Due to the tremendous support from GFWC members, CCI has named a puppy after International President Carlene Garner. Puppy Carlene is featured on the cover of the Canine Companions 2012 Calendar, as well as inside. The calendar contains beautiful dog photographs, a cute pullout poster, and \$14 in Eukanuba dog food coupons. Help Canine Companions place more dogs with people with disabilities by [purchasing one today](#).



## GFWC CALENDARS ARE WAITING FOR YOU

The 2012 GFWC Year in Pictures Calendars have arrived. The perfect stocking stuffer for anyone on your list, each month features a striking photo taken by the Year in Pictures photography contest winners. Remember important dates with the new Buy-a-Day feature, where members and friends purchased a day to highlight special commemorations—from birthday greetings to club anniversary celebrations and fundraising bazaars. Go to [www.GFWC.org/Marketplace](http://www.GFWC.org/Marketplace) to place your order.





# GFWC NEWS



**amazon.com**  
and you're done.™

## *SUPPORT GFWC WHEN YOU SHOP AT AMAZON.COM*

Help strengthen GFWC's volunteer programs the next time you shop at Amazon.com by making your purchases through GFWC's Amazon.com affiliate link. The link enables members to direct **up to 15 percent** of their total purchases to the Federation. The link can be accessed here, or by clicking on the Amazon.com image at [www.GFWC.org](http://www.GFWC.org).



## *GET JAZZED FOR FUNDRAISING WITH COFFEE*

Grounds for Change offers coffee with a twist: with every bag, their coffee focuses on the social, environmental, and financial implications of conducting business. With products personalized to GFWC, members can provide a personalized and premium product to fundraising supporters. The end result is a truly exceptional cup of coffee! For more information, go to [www.GFWC.org/GFWCMembers](http://www.GFWC.org/GFWCMembers).



**GENERAL FEDERATION  
of WOMEN'S CLUBS**

## GO NUTS FOR FUNDRAISING

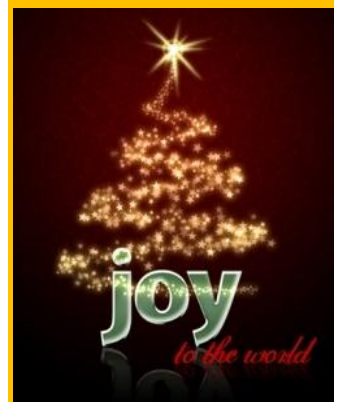
Looking for an easy fundraiser that your supporters will love? Consider Uncle Al's Pecans. A family-owned and operated business founded nearly 30 years ago, Uncle Al's has been a part of the GFWC family for years. Uncle Al's can supply your club with nuts (raw, roasted or salted) chocolate or toffee coated items, fruit mixes and other snack products for your fundraising project. For more information, contact Uncle Al's .. Monday-Friday at (800) 877-4208

## LET YOUR FLAG FLY

The time has never been better to let our Emblem-spangled banner wave. **GFWC Flags** come in 3'x5' and 4'x6' sizes. The GFWC flag is a perfect, highly visible, and easily portable way to brand any event, publicity table, or speaking engagement. Go to [www.GFWC.org/Marketplace](http://www.GFWC.org/Marketplace) to place your order today.

## DOMESTIC VIOLENCE

Save time, money, and the environment while helping domestic violence survivors by purchasing GFWC holiday e-cards. Select the Joy to the World image or one of two other specially-designed holiday e-cards, create a unique message to send to up to 250 of your closest friends, and GFWC will do the rest. Best of all, proceeds benefit the GFWC Signature Project: Domestic Violence Awareness and Prevention Fund. All purchases include a special gift and will be acknowledged in the January+February 2012 issue of GFWC Clubwoman Magazine. All donations are tax-deductible. Deadline is **December 1, 2011**. Contact [PR@GFWC.org](mailto:PR@GFWC.org) for more information.





(Continued from page 5)

- gulating school libraries,
- Create a Domestic Science Chair at the Industrial Institute and College.

#### MISSISSIPPI FOOD NETWORK FACEBOOK CHALLENGE

Remember this posting on the MFWC facebook page:

Facebook friends, please vote and help the Mississippi Food Network win this food for our fellow Mississippians. Ask you other facebook friends to vote for the Mississippi Food Network. Let win this food for Mississippi.

Well it worked. See below.

Officials from Tyson Foods, Inc. distributed 30,000 pounds of chicken to the Mississippi Food Network. Dozens of boxes of various types of chicken were unloaded off of an eighteen wheeler, and into freezers at the Mississippi Food Network. 30,000 pounds of chicken will provide 120,000 servings of food. Bud Odom from Tyson Foods, says, "we need to be as good stewards

(Continued on page 13)

## Important Dates

### December 2011

1	World AIDS Day (International Outreach), National Freedom Day
10	Human Rights Day (International Outreach),
22	December Solstice
25	Christmas Day
25	Jesus Christ's Birthday

### January 2012

	National Poverty in America Awareness Month (Public Issues), Birth Defect Month, National Renewable Energy Month
1	New Year's Day
16	Martin Luther King Jr. Day/Day of Service (Public Issues), Civil Rights Day
16	Robert E. Lee Birthday (State of Mississippi Holiday)

### February 2012

	Library Lovers Month (Arts & Education), American Heart Month, America Saves Week,
1	National Freedom Day
2	Groundhog Day
3	National Read Wear Day (Home Life)
5-10	Women's Heart Week
5-11	National Burn Awareness Week
21	President's Day



## Important Dates

### March 2012

	Youth Art Month (Arts), Read Across America Month (Education), American Red Cross Month, National Consumer Protection Week (Home Life)
2	Read Across America Day -Dr. Seuss's Birthday (Education),
8	United National for Women's Rights and International Peace (International Outreach), Mardi Gras,
13	Daylight Saving Time Starts
17	St. Patrick's Day
20	Vernal Equinox (Spring begins)
21	International Day for the Elimination of Racial Discrimination (International Outreach),
22	World Day for Water (Conservation & International Outreach),
24	World TB Day (Home Life & International Outreach)
27	Education and Sharing Day (Education),

### MFWC Conventions

Feb 25	GFWC-MFWC District V Convention (Florence, MS)
Mar 3	GFWC-MFWC District I Convention (Picayune, MS)
Mar 10	GFWC-MFWC District II Convention (Meridian, MS)
Mar 17	GFWC-MFWC District III Convention (Bruce, MS)
Mar 24	GFWC-MFWC District IV Convention (Indianola, MS)
Apr 26-28	GFWC-MFWC State Convention hosted by District V (Eagle Ridge Conference Center, Raymond, MS)

### NEWS NEEDED!!!

If you have any news items that you would like to share with your MFWC Clubwomen, send it to la-harris@hughes.net.



### LET'S HELP

in the fight against breast cancer. Here is how it works: Look for pink lids on your favorite Yoplait products this fall and redeem your lids online, by mail or both! Yoplait will donate \$.10 to Susan G. Komen for the Cure® for each pink lid redeemed by December 31, 2011.

For more information, check out this link: <http://www.yoplait.com/save-lids-save-lives/about-save-lids-save-lives/>.

*(Continued from page 12)*

of large companies, we need to give back to the people who buy our products, who support us, but we also need to recognize those people who are very needy."

The Mississippi Food Network received the distribution after winning a Facebook challenge back in September.

Be sure to  
check out each  
month:

Tammie's  
Tidbit  
and  
Suz's  
Snippets.



Support the  
President's Special  
Project -  
Feeding Fellow  
Mississippians

WE'RE ON  
THE WEB!  
WWW.GFWC-  
MFWC.ORG

## Important Dates

### MFWC Deadlines

Jan 1	Final date to <b>submit Club dues (State level)</b> in order for reports to be judged. Mail dues and 2 copies of membership roster to Shirley Hilburn, GFWC-MFWC Treasurer, 1100 South Fifth Avenue, Cleveland, MS 38732.
Jan 1	Final date to <b>submit Club dues (District Level)</b> . Mail dues and 1 copy of membership roster to District Treasurer: District I - Shirley Wiltshire, 508 S. Julia Street, Poplarville, MS 39470, District II - Melissa Carleton, P. O. Box 253, Union, MS 39365, District III- Carolyn Long, 204 Buckingham Street, Okolona, MS 38840, District IV - Ella Cronin, 403 South First Street, Cleveland, MS 38732, District V - Phyllis Whittington, 5313 Berrytown Road, SE, Meadville, MS 39653.
Jan 1	Final date for clubs to suggest state officers for 2012-2014 administration. Mail suggestions to June Vaughn, 89 CR 257, Bruce, MS 38915.
Feb 1	<b>Club reports</b> must be postmarked by this date. Mail Cover Sheets only to GFWC-MFWC President McCoy, 177 West Oxford Street, Pontotoc, MS 38863; Report, Cover Sheets & Supporting Materials to GFWC-MFWC Vice President Libby Everett, 113 Temple Rd, Petal, MS 39465 and Reports and Cover Sheets only to GFWC Department P, 1734 N. Street NW, Washington, DC 20036.
Feb 1	<b>Challenge Grant Application</b> must be postmarked and mail by this date. Mail to Jana Jarrell, 46 54th Street, Gulfport, MS 39507.
Feb 1	<b>Hebron Memorial Scholarship Application</b> must be postmarked by this date. Mail application to Tinker Forrester, 5257 Highway 15, Ackerman, MS 39735.
Feb 1	<b>Submission to <i>Mississippi Clubwoman</i></b> magazine must be email to June Vaughn by this date. Email articles to June Vaughn at junevaughn@brucetelephone.com.
Feb 10	GFWC-MFWC Executive/Finance Committee Meeting at Headquarters



Feb 10	Final date to submit <b>Clubwoman of the Year Nominations</b> . Mail to President McCoy, 177 West Oxford Street, Pontotoc, MS 38863.
Feb 10	<b>GFWC LEADS Participant Application</b> postmarked by this date. Mail to Susan Shurden, 160 Blythe Creek Road, Mathiston, MS 39752
Feb 11	GFWC-MFWC Judging Day at Headquarters
Feb 15	<b>Scrapbooks and Yearbooks</b> must be postmarked (mailed) to the District Book Chair by this date. District I - Donna Hutchings, 901 39th Avenue, Gulfport, MS 39501, District II - Mary Ford, 212 Brock Avenue, Quitman, MS 39355, District III - Jewel Phillips, 511 High Street, Aberdeen, MS 39730, District IV - Deana Pittman, 477 Katherine Trail, Batesville, MS 38606, District V - Letha Smith, 12 Pawnee Trail, Clinton, MS 39506.
Mar 1	<b>Sarah Peugh Butterfly Scholarship</b> must be postmarked by this date. Mail to Dana Carol Bridges, P. O. Box 238, Star, MS 39167.
Mar 1	<b>Club History Report</b> must be postmarked by this date. Mail to Celia Fisher, 109 West Monroe Avenue, Okolona, MS 38860.
Mar 15	All <b>Publicity Books</b> must be in the hands of the Publicity Book Chairman by this date. Mail to or give to Lisa A. Harris, 822 SCR 115 South, Raleigh, MS 39153.

### GFWC COMMUNITY SERVICE PROGRAMS ARTS - COLLABORATION

As the holiday season approaches, it is an excellent time to be mindful of ideas to be creative. They say "Beauty is in the eye of the beholder". Nothing is more true. Being creative doesn't mean you have to be able to paint or draw. Be a facilitator. Very successful people, a lot of times, have very limited "artistic" ability. They are able to lead and direct. Take this time to "lead" a child or disabled adult. Assist them in finding their hidden talents. You will be surprised. Buy supplies, volunteer. I know the holiday season is very busy, but I think we will all be "blessed" and taking a break from all the hustle and bustle will help us all be more grounded during this time. Have a "Blessed Holiday" .

Terrie Whitehurst,  
Art CSP Collaboration Chairman

### ITEMS AVAILABLE AT MFWC MARKET PLACE

- ◇ MFWC Aprons . . \$10.00 (Reduced)
- ◇ MFWC T-Shirts . . \$7.00 (Reduced)
- ◇ MFWC Notecards . 10 for \$6.00  
5 for \$3.00
- ◇ MFWC Members Pins . . \$5.00
- ◇ MFWC Sweat-shirts . . \$20.00
- ◇ MFWC Polo Shirts (special order) . . \$20.00
- ◇ MFWC Umbrella . . \$15.00
- ◇ MFWC Cloth Grocery Bag . . \$5.00
- ◇ Kym Garraway Notecards . . \$1.00 ea.
- ◇ Pin Ribbons . . \$1.00 ea.

### NEW ITEMS!!!

- ◇ MFWC Charm . . . \$10.00
- ◇ MFWC Mousepad . \$5.00

Contact Diane Rouse,  
Ways and Means Chair  
to order any of these items.

**GFWC MEMBERSHIP ADVANCEMENT AREA:**
***CLUB ANNIVERSARIES***

Club Presidents and/or Club Historians,

We need you help in updating the GFWC files. Please review the list below and let me know your clubs correct federation date. Please note, this is not your organized date.

<b>District</b>	<b>Official Club Name</b>	<b>Federated*</b>	<b>Official Club Name</b>	<b>Federated*</b>
I	Cosmopolitan Club Of Petal	N/A	Lucedale Woman's Club	1925
I	Fidelia Club of Ellisville	N/A	Moss Point Fortnightly Club	N/A
I	Fine Arts Club of Waynesboro	N/A	Pascagoula Civic Guild	1947
I	GFWC-MFWC Civic Woman's Club of Picayune	N/A	Poplarville Woman's Club	N/A
I	GFWC-MFWC Present Day Club of Waynesboro	N/A	Woman's Club of Gulfport	1915
I	Home and Garden Club	1924		
II	Decatur Woman's Progressive Club	1928	Present Day Club of Union	1927
II	Enterprise Woman's Club	N/A	Quitman Woman's Club	1926
II	Fortnightly Club of Meridian	1898	Round Table of Meridian	1913
II	GFWC Ackerman Twentieth Century Club	1909	Thursday Club of Walnut Grove	1947
II	GFWC-MFWC Futura Club	1959	Twentieth Century Club of Sallis	1939
II	Philadelphia Woman's Club	N/A	Twenty-first Century Club of Kosciusko	1898
III	Fulton Civic Club	1938	GFWC-MFWC Twentieth Century Club of Bruce	N/A
III	GFWC-MFWC Eupora Twentieth Century Club	N/A	GRACE Club of Bruce	N/A
III	GFWC-MFWC Fine Arts Club of Bruce	N/A	Pontotoc Woman's Club	1938
III	GFWC-MFWC Iuka Twentieth Century Club	1935	Sorosis Club of Tupelo	1940
III	GFWC-MFWC Lanier Club	1993	Woman's Club of Aberdeen	1920
III	GFWC-MFWC New Century Club of Calhoun City	1938	Woman's Club of Booneville	1922
IV	Batesville Junior Woman's League	N/A	Greenwood Woman's Club	1910
IV	EPHFIC Woman's Club Cleveland	1956	Indianola Civic League	1947
IV	GFWC-MFWC Batesville Woman's Club	1937	LeBonte Woman's Club of Greenwood	1951
IV	GFWC-MFWC Cleveland Woman's Club	1919	Tunica County Woman's Club	1914
V	Crystal Springs Floral Club	1899	GFWC-MFWC Purvis Woman's Club	1993
V	GFWC-MFWC Florentine Club	1930	GFWC-MFWC Raleigh Woman's Club	1931
V	GFWC-MFWC Florentine Evening Club	N/A	GFWC-MFWC Star Woman's Club	2007
V	GFWC-MFWC Gavel Club	1977	LeBonte Woman's Club of Clinton	1974
V	GFWC-MFWC Homochitto Heritage Club, Inc.	1971	Maid & Matrons	1950
V	GFWC-MFWC Jackson Pearl Club	N/A	Twentieth Century Club of Prentiss	N/A

\* as shown in GFWC records.




VISIT THE OPERATION SMILE STORE ON TINYPRINTS TODAY

With the holidays around the corner,  
get a jump start on your season's greetings  
by ordering your holiday cards today.



tinyprints 

SHOP NOW 

## PERSONALIZED HOLIDAY CARDS

This holiday season, send greeting cards that show your support for Operation Smile and help ensure brighter futures for children worldwide.



SHOP NOW 

**10% OFF  
ORDERS OF  
\$49 OR MORE!**

Use promo code SMILE10 to receive the discount. Choose from hundreds of items and 13% of all sales will be donated to Operation Smile!

- Holiday Greeting Cards
- Photo Books
- Calendars
- Invitations
- Stationary
- And More!

(Continued from page 2)

- Engage members. Give members an opportunity to have a voice.
- Recognition is important to everyone and is a great motivator for further involvement.
- Personal stories allow members to share something that might be unknown about themselves.
- Keep in touch with members by phone call, newsletter, e-mail, or postal mail.

Did you notice that each of these suggest that we get to know our members and their likes and dislikes?

A club that responds to the wishes of its members has a greater chance of having motivated members which will result in a successful club. Happy members are your club's best advertisement!

## VOLUNTEERING

**There is no better  
exercise for your heart,  
Than reaching down  
and helping to lift  
someone up  
~Bernard Meltzer**



## EMAIL ADDRESS CORRECTIONS

If you email address has changed in the last six months, please send your new email address to Lisa





## 2012-2014 GFWC ORIENTATION

By Suzanne Poynor, GFWC-MFWC President-elect.

After hearing about "Orientation" for years, it was finally my time for this experience. I was going to represent MFWC at the 2012-2014 Administration Orientation Meeting in Alexandria, Virginia. The idea of going was exciting as well as daunting!

The morning I arrived at the Westin in Alexandria, I saw familiar GFWC faces and I was greeted with warm smiles and hugs. I knew this would be a special meeting.

That afternoon, we loaded bus-

es and we were on our way to the GFWC Headquarters Reception. As I exited the bus, I looked up and saw the flags of the United States and GFWC blowing gently in the breeze against the white walls of the elegant Victorian mansion. I was speechless. Carlene Garner met us with her sweet smile. First timers to visit were welcomed with a "key" to headquarters. The wall coverings, moldings, furnishings, paintings, window treatments, well everything, was just lovely. We were treated to a delicious table of goodies. Our GFWC Headquarters is truly a treasure.

After a dinner meeting and a

fun Wear a Pair, Bring a Pair Pajama Party, we got down to business early the next morning. We began leadership training to inform and to arm the incoming 2012-2014 Team with plans and information to empower GFWC to be the very best volunteer organization! I am enthusiastic about the plans and information that were explained and I am anxious to share it with our MFWC Clubwomen.

Thank you for giving me the opportunity to make more GFWC friendships and memories as we prepare for a successful GFWC-MFWC 2012-2014!



## *GFWC-MFWC IUKA TWENTIETH CENTURY CLUB CELEBRATES 75 YEARS OF SERVICE*

By Terrie Whitehurst,  
President, GFWC-MFWC  
Iuka Twentieth Century  
Club

The GFWC-MFWC  
Iuka 20th Century Club  
celebrated 75 years of  
Volunteerism in October

this year at the Iuka  
Library.

We were fortunate  
to have President  
Tammie McCoy and her  
husband, Bruce, as our  
special guests. Also  
attending from out of  
town was Lisa A. Harris,  
from the Raleigh

Woman's Club. We really  
appreciate her  
documenting the day  
with lots of pictures and  
laughs. Our other guests  
included the Mayor,  
aldermen, Food Pantry  
director, several past  
members, friends and  
family.

Thirteen members  
were present. Our last  
charter member, Jewell  
Kitchens passed in May.  
Several of her family  
members were present.  
We will be honoring her  
with a memorial at our  
Christmas Social.



## *GFWC-MFWC IUKA TWENTIETH CENTURY CLUB REMEMBER JEWELL KITCHENS*

By Terrie Whitehurst, President,  
GFWC-MFWC Iuka Twentieth Century  
Club

Jewell Kitchens, 97, died  
Thursday, July 7, 2011. She was an  
active and lifelong member of the  
Iuka Baptist Church. She was a  
very accomplished homemaker  
that enjoyed sewing, crocheting,  
and quilting. She was a charter

member of the Iuka 20th Century  
Club, and was a member for 75  
years. She was a 1935 graduate of  
the Mississippi State College for  
Women and was in the Vertically  
Elite Club there for her straight  
posture, which was a big honor  
during that era. She also helped  
manage Eastport Marina for 25  
years.

She was gifted in so many ways  
and always shared of herself. Mrs.  
Kitchens was the mother of local  
physician, Dr. Ben Earl Kitchens  
and her daughter in law, Joy is a  
current and active member of the  
Iuka 20th Century Club. She will be  
missed by us all.



## GFWC REPORTING:

**2011 REPORTING REVIEW**

By GFWC-MFWC Vice President Libby Everett.

Reports on club activities from January 1st to December 31st this year are due to MFWC by February 1st, 2012. Since we have all had a year to get acquainted with changes in the process and procedure of reporting, I'm expecting some wonderful reports for this club year.

I hope that all of you pay your club's MFWC dues by January 1st in order for your reports to be judged. Even if you do not pay dues by that date, please send in your reports. Your club's efforts will still count toward the in-kind hours that allow us to keep our MFWC Headquarters in Jackson.

- Please note that changes have been made to the GFWC Photography Contest rules. They will be in effect for this contest year May 2010-May 2011. You can find these on the MFWC website [www.gfwc-mfwc.org](http://www.gfwc-mfwc.org) in the May newsletter.

- Keep an accurate record of "Dollars Donated" by members to various Community Service Programs and Special Projects. For example, if your club raises \$20,000.00 through several fundraisers during the year, that total amount (\$20,000.00) is reported in the "Dollars Donated" column in the Fundraising Advancement Area and your narrative would describe the ways your club raised the money. For monies given to the various Community Service Programs and Special Projects, report the exact amount of "Dollars Donated" to each program and project. Example: Of the \$20,000.00 raised, report that your club designated \$2,000.00 to Arts collaboration, \$5,000.00 to Home Life partnership, etc. Just be sure when totaling your "Dollars" that you do not count these dollars twice! It is anticipated that the GFWC Report Form will be

changed to better clarify dollars raised/dollars donated.

- The main area of concern in writing reports and judging them was clarifying Collaboration versus Partnership. My hope is that, since this will be a complete year of the new language, we will have fewer problems in writing and judging reports. Collaborations are programs and projects that are independent of any GFWC relationship, while meeting needs in your own community. Anything that is not reported in Partnership (GFWC Partners identified in the GFWC 2010-2012 Manual), is reported in Collaboration.
- Another area of concern for most clubs was in-kind donations. In-kind Donations are the dollar value of ANY resources **other than money** that are used or obtained by the club to complete a project. This includes anything donated to the club for that purpose (other

than money) whether it is from club members or others.

- Narratives are important for they give valuable information about your projects not found on the statistical form. You must submit one narrative and a report form for each area you are reporting in if you wish to be considered for awards.

I hope this clarifies some issues that came up during Judging Day and thereafter.

Please do not hesitate to contact me if you need assistance. I will be happy to answer all that I can and find out how I can best help you. My telephone number is **601-544-8463**. If I do not answer, please leave a message and a good time to call back and I will do so.

From my family to yours; Merry Christmas and Happy New Year! May the joy of the season and the good tidings of the New Year bring peace, happiness, and prosperity to your home!



## *RECOGNIZING 25 YEARS OR MORE OF SERVICE TO THE GFWC-MFWC FINE ARTS CLUB OF BRUCE*

By June Vaughn, President, GFWC-MFWC Fine Arts Club of Bruce

GFWC-MFWC Fine Arts Club of Bruce proudly recognizes Wanda Watkins, a Fine Arts Club member for 34 years and Paula Jeffery, a Fine Arts Club member for 28 years.

Wanda, a member since 1977, has served two terms as President in 1979 and 1987 and was named the club's Clubwoman of the Year in 2004. A tremendous asset to the Fine Arts Club and its endeavors, Wanda is that "one of a kind" club member with sincere humility who always puts others first. Additionally,

she is that rare club member who is quick to point to others for credit and accomplishments, never wishing to put herself in the limelight, though very deserving of recognition. Such programs as March of Dimes, Relay for Life, Breast Cancer Awareness, and other women's health issues have been very important to Wanda and she has dedicated many hours, resources, and much effort to their causes. Additionally, her genuine love and concern for others draws her to involvement in club efforts in assisting targeted groups or individuals. Furthermore, as a retired educator after 28 years in the classroom, she is al-

ways quick to be a champion for education.

Paula, a member since 1983, has served two terms as President in 1986 and 1997 and was named the club's Clubwoman of the Year as well as District III Clubwoman of the Year in 2003. Projects initiated or emphasized during her presidencies focused on community improvement. Paula has garnered over 30 years as a successful businesswoman and esteemed community leader. As co-owner of Jeffery's Gift Shop with her daughter, she is known for her generosity to others in sacrificially volunteering her time, talents, and resources.

As a club member who always puts "service before self," she is continuously and consistently giving back to the community. Recognizing her passion for volunteer service and success as a leader, club Presidents and other officers have looked to her for direction and guidance. As a true club leader, she does in fact lead by example, but by the example of "doing" not by "being." She furthermore demonstrates that to become and be a leader, one must possess the basic traits of kindness, compassion, patience, and humility, and above all show love for others.



Left— Wanda Watkins  
Right—Paula Jeffery





## *GFWC-MFWC SALUTE OUR 25 + YEARS OF SERVICE MEMBERS*



The **GFWC-MFWC Raleigh Woman's Club** would like to salute our 25+ year of service members: Mary Edmond, 25 years; Nicki Yeager, 55 years and Vivian Corley, 75 years of service. Left to right, President McCoy and Nicki Yeager, Mary Edmond, and Lisa A. Harris, Vivian Corley and President McCoy.



The **GFWC-MFWC Iuka Twentieth Century Club** would like to recognize the following clubwomen for their years of service: Zenobia Oaks , 53 years; Maxine Wade, 53 years; Willadeen Thorne, 43 years; Nancy Daughterty, 35 years; Joy Kitchens, 35 years and Fredda McCune with 27 years.



GFWC JENNIE AWARD

## MISSISSIPPI'S JENNIE AWARD HONOREE



The GFWC Jennie Award honors one clubwoman from each GFWC Region for outstanding commitment to club, community and family. They are chosen by their clubs to compete at state, region and national levels for their outstanding personal commitment to club, community, and family.

The GFWC Jennie Award is named in honor of GFWC's founder, Jane Cunningham Croly, who wrote for national newspapers under the pseudonym, "Jennie June." The award is an occasion to highlight those extraordinary clubwomen who epitomize her spirit of independence, courage, and persistence in purpose through their roles as volunteers within their clubs, elsewhere in the community, and as members of a family or extended family. Although GFWC has many awards for states and clubs, the GFWC Jennie Award is the only national honor that recognizes individual members for personal excellence. In fact, it is the highest honor bestowed by GFWC.

Nominations are evaluated on the following criteria:

### **Commitment to Club**

The nominee should have an outstanding record of success and achievement, not only in terms of her club's volunteer programs and

projects, but also her role in a leadership position, her activity to build membership and promote the club to others, and her overall spirit of volunteerism. She should be kind, loyal, and positive in her relationships with other clubwomen, and her commitment should be continuous, rather than a onetime activity.

### **Commitment to Community**

Community service must address real community needs and concerns. This service should go beyond club activities and be carried out through other community organizations (e.g. schools, hospitals, an elected/appointed position, scouts, etc.) as well as through the workplace. Activities should reflect an innovative or unique approach to volunteerism.

### **Commitment to Family**

Recognizing that families come in many different forms, the nominee might be a single parent, a grandparent raising her grandchildren, an adult caring for an elderly relative, or an adult without children. The definition of a family member may include persons who are older or younger than the nominee. It may include nuclear as well as extended family members. The nominee should exemplify outstanding concern for the well-being, health, and welfare of one or more persons

by providing aid and comfort on an on-going basis, separate and apart, from club and community work.

The following article appear in her local home town paper. See if you can guess who is the Mississippi's 2012 Jennie Award Honoree.

*The GFWC-MFWC ---- Club of ---- is excited to announce that clubwoman, Mrs. -----, has been nominated for an exciting award and has won on the state level!*

*The award, called the Jenny Award, honors one clubwoman from each General Federated Woman's Clubs' Region for outstanding commitment to club, community, and family. Candidates are chosen by their clubs to compete at state, region, and national levels for their outstanding personal commitment to club, community, and family.*

*The GFWC Jennie Award is named in honor of GFWC's founder, Jane Cunningham Croly, who wrote for national newspapers under the pseudonym, "Jennie June." The award is an occasion to highlight those extraordinary clubwomen who epitomize her spirit of independence, courage, and persistence in purpose through their roles as volunteers within their clubs, elsewhere in the community, and as members of a family or extended family. Although GFWC has many awards for states and clubs, the GFWC Jennie Award is*





*(Continued from page 23)*

the only national honor that recognizes individual members for personal excellence. In fact, it is the highest honor bestowed by GFWC.

Mrs. --- was surprised Monday night when MFWC President, Dr. Tammy

McCoy, came to the club's meeting in order to inform her that, not only had she been secretly nominated for the award by her club and church members, husband and many others; but also, that she had won the award at the state level, and will be recognized

as such at a convention in Tampa, FL in late October where she will attend with several club members.

The Mississippi Federation of Women's Club, Inc. is proud to honor Mrs. Celia Coleman Fisher as our 2012 GFWC Jennie

Award Honoree. Congratulation Celia!!!

P. S. Newspaper article was written by Rannie Collums Gillentine, President of the GFWC-MFWC Lanier Club.



## MISSISSIPPI'S GOES TO SOUTHERN REGION CONFERENCE IN TAMPA, FLORIDA

By Lisa A. Harris, Editor, President of GFWC-MFWC Raleigh Woman's Club.

The Mississippi Federation of Women's Clubs, Inc. packed their business casual clothes, pirate outfits and our formal dresses, hop in cars and boarded planes and journeyed to Tampa, Florida to enjoy the 2011 Southern Region Conference.

We enjoyed exceptional speakers and a agenda that included activities designed to give us a new and updated perspectives on several GFWC topics.

Topics included Canine Companions, Prevent Child Abuse America, Domestic Violence Awareness, Advocates for Children, leadership development, LEADS presentations, reports from State Presidents and much, much more. Other activities include a meeting between Club President and GFWC President Garner and a tour of the Keel & Curley Winery.

Friday night, the MFWC ladies deck out in their pirate outfits and following Captain Tammie McCoy to the Raymond James Stadium, where we enjoyed a meal, great entertainment (band and dancing) and a tour of the Pirate Ship. Yes

ladies, we toured the Tampa Bay Buccaneers Pirate Ship.

Back at the hotel, the Mississippi Pirates enjoyed a fun night of Karaoke with all our friends from the Southern Region.

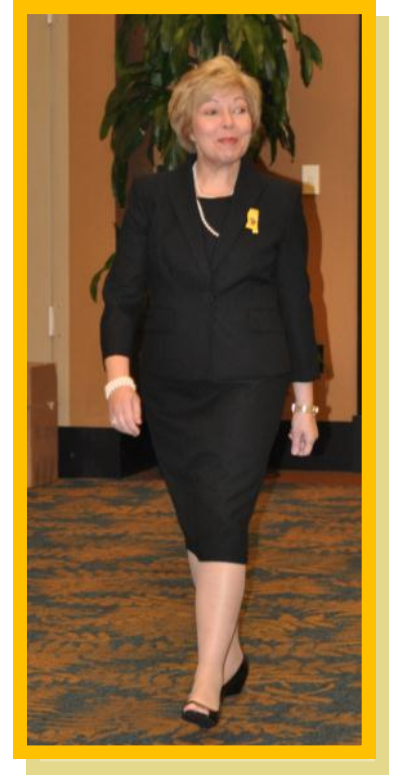
Saturday morning started with a inspirational speech by our very own President McCoy on the Pencil Parable. A full day of meetings and

banquet which honored the GFWC Southern Region Jennie Award Nominees followed. After the official SRC business, ended at 11:00 p.m., the Mississippi ladies hosted a "Batty For Federa-

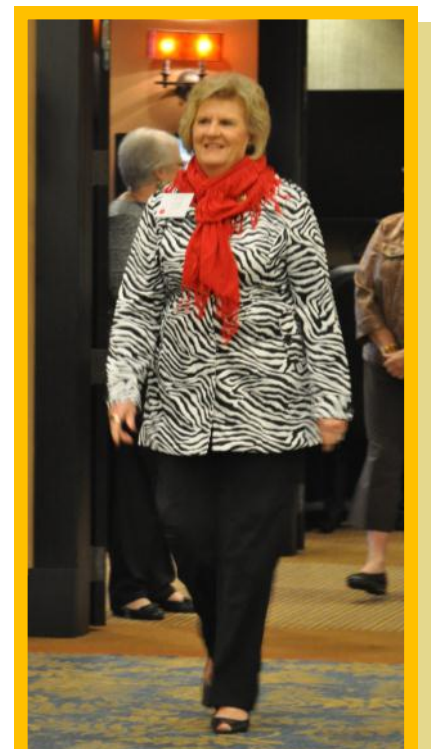
tion" party in honor of Mrs. Celia Fisher. As usual, fun was had by all who attended the Mississippi party.

Sunday morning was comprised of breakfast, inspirational entertainment, more speeches and traveling home. President McCoy give a short and witty report on the GFWC-MFWC accomplishments done in the style of Captain McCoy.

Be sure to "drive" yourself to Augusta, Georgia for the 2012 SRC. Considering attending and enjoying fellowship with your southern GFWC sisters.



**President McCoy enters SRC 2011 Convention.**



**SR Treasurer Jo Anne Reid enters SRC 2011 Convention.**



## SOUTHERN REGION CONFERENCE 2011 TAMPA, FLORIDA



SR Parliamentarian Judy T. Martin enters SRC 2011 Convention.



Lisa and Terrie encountered a little excitement while traveling to Tampa.



MFWC ladies deck out in their pirate outfits followed Captain Tammy McCoy to the Raymond James Stadium, home of the Tampa Bay Buccaneers.







Jo Anne Reid enjoys doing the "YMCA" dance at the Karaoke , while Lisa Harris is having fun with other Southern Region sisters.



"Raiding" the pirate ship in the rain.



Jeanith and Abby participating in Leadership Skit.



The Mississippi ladies all dressed up for the formal banquet.





# Southern Region Conference









# 'Batty For Federation' Reception











# Batesville Junior Woman's League



Batesville Junior Woman's League teamed up with MDOT to collect Band-aids for Blair E. Batson hospital. Pictured here is BJWL member Rachel Kirkland helping gather up the club's donations.



Batesville Junior Woman's League participated in the Batesville Mainstreet's Trunk or Treat for Halloween. The theme for the club's display was "BJWL is Batty for Service." Shown here are members Chanda Lantern, Misty Wright, Deana Pittman, Michelle Ford, and future BJWL members Abbi Pittman and Megan Ford.

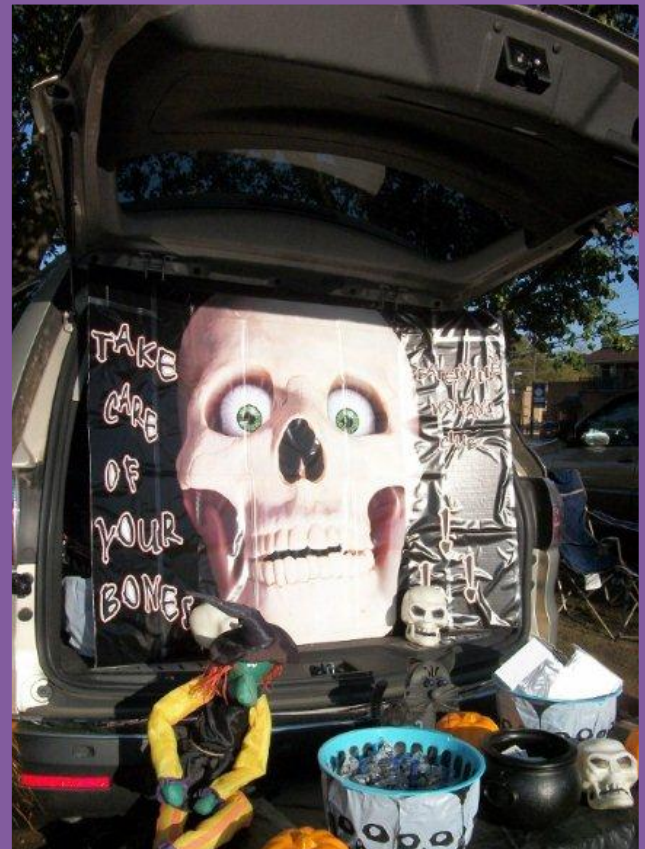


*Volunteering .... It's What We Do !*





*Volunteering .... It's What We Do !*



## *Batesville Woman's Club*

Trick or Trunk was celebrated by MFWC Batesville Woman's Club with two decorated trunks visited by about 300 children accompanied by other family members. Apples were distributed from one trunk; the other contained information about osteoporosis, press-on skeleton tattoos, and healthy snacks.





# Batesville Woman's Club

For a home life community service project, MFWC Batesville Woman's Club donated hats and caps to the Family Cancer Center Foundation/Baptist Memorial Medical Group in Oxford, MS to be given to cancer patients who lose their hair. Dawn Lipscomb, director, reported some of the patients receiving treatment at the time the hats were delivered began selecting their favorite hat immediately.

The group picture shows club members Denise Brooks (third from left), Barbara Young (fourth from left), and Mary Jo Cook (far right) along with oncology nurses, two cancer navigators, and director Lipscomb.



*Volunteering .... It's What We Do !*





In September MFWC Batesville Woman's Club conservation service committee visited the Audubon Society Strawberry Plains Hummingbird Festival near Holly Springs, MS. While there they observed volunteers banding and recording statistics for each bird. Other activities included discussions by various experts who displayed bats, snakes, and other animals. Others showed ways to sustain the environment with native plants. Plans are being made for the whole club to attend the festival in 2012.

The pictures show the process of attaching the band to the hummingbird's leg and holding the bird before release.

*Batesville Woman's Club*



*Volunteering .... It's What We Do !*





Fine Arts Club of Bruce members Sandra Pope and Lib Massey work at booth at Very Special Arts Festival in Oxford on September 22nd helping participants make a "Spin the Top."



*Volunteering ....  
It's What We Do !*

## *Fine Arts Club of Bruce*



Fine Arts Club of Bruce held a Soup Luncheon on October 14th with all proceeds of \$859 going to the Daily Bread Food Pantry as a part of the President's Special Project. Pictured are Polly Bare, Linda Stepp, Carol Shoemaker, and Sandra Cain preparing take out bags.

# Fine Arts Club of Bruce



Fine Arts Club of Bruce held its second annual St. Jude Toy Drive on October 1<sup>st</sup> and collected toys valued at \$360 for the outpatient area toy boxes and cash donations of \$546. The cash donations were used to purchase items from their 2011 Patient Holiday wish list. Pictured are club members Rose Mary Shelton and Amanda Weeks receiving toy from donor.



Fine Arts Club of Bruce President June Vaughn packs box of 81 pairs of socks collected by members as a part of the GFVC Domestic Violence Sock Project on "Make a Difference Day" on October 22, 2011. The socks were donated to Safe Haven, Inc., in Columbus, the Domestic Violence Shelter that services our Bruce area.



*Volunteering ....  
It's What We Do !*





Raleigh Woman's Club members helped at the Very Special Arts Festival in Laurel, MS. Pictured is Mary Edmond (left) and Willie Grace Myatt (below).



*Volunteering ....  
It's What We Do!*



## Raleigh Woman's Club



Raleigh Woman's Club president Lisa Harris delivered 100 pairs of sock and cleaning supplies to our Domestic Abuse Shelter in Laurel, MS.

Raleigh Woman's Club and the Raleigh Friends of the Library hosted a program on Smith County Veterans of WWII. Speaker was local historian Gene Tullos.





## GFWC Awards, Contests & Grants

### *Photography Contests Update*

GFWC apologizes for any confusion associated with the 2011 Photography Contests. We hope the following clarifies the rules and entry requirements for the 2012 contests.

The GFWC Photography Contests encourage members' artistic expression, and recognize and support members' achievements in photography. GFWC offers three photography contests:

- **The World in Pictures** encourages members to capture the beauty of the world and people around us in three categories:

#### Natural History

#### Scenic

#### Feature

- **GFWC Volunteers in Action** provides members with the opportunity to demonstrate their volunteer activities during the year through photography.
- **A Year in Pictures**—also known as the GFWC Calendar Contest—allows members to showcase their talents while supporting GFWC through the fundraising calendar.

#### Contest Rules

- All photographers must be dues-paying members of active GFWC clubs.
- Contest year runs from January 1-December 31 (i.e., January 1-December 31, 2011, for entries judged in 2012).
- Each photo must have a label affixed to its back with the following information: Contest name; photographer's name, email address, mailing address, phone number; name and state of sponsoring club; brief caption giving location and other notes about the photo; and photo title.
- Each entry must include a signed GFWC Creative Arts Waiver (available at [www.GFWC.org](http://www.GFWC.org) or by contacting GFWC at 1-800-443-GFWC or [GFWC@GFWC.org](mailto:GFWC@GFWC.org)).
- Photos may be taken using film or digital cameras. Date stamps should not appear on photographs.

#### World in Pictures and GFWC Volunteers in Action Contests

- Clubs must send photos to their respective state photography chairmen.
- States will submit winning photos to GFWC Headquarters.
- Submission deadline is May 15, 2012. Special consideration will be made for States with conventions scheduled for after this date.
- All entries must be matted.
- Size of entry (including matting) must be at least 10 x 12 inches but no larger than 14 x 16 inches. All others will be disqualified. No frames or glass allowed.

#### Year in Pictures Contest

- Photos must be horizontal.
- Entries must be in color.
- Each GFWC club may submit one photo to GFWC Headquarters by May 1, 2012.
- Photos must measure 8 x 10 inches.
- No matting is allowed.

For the complete contest rules, refer to the *GFWC Awards, Contests, and Grants Guide* at [www.GFWC.org/ClubManual](http://www.GFWC.org/ClubManual). Direct contest-specific questions to GFWC Photography Contests Chairman Gayle Hanna at [asbda@alpinecom.net](mailto:asbda@alpinecom.net) or GFWC Programs Associate Kathleen Sullivan at [KSullivan@GFWC.org](mailto:KSullivan@GFWC.org).

**Wishing You a Merry Christmas!!!**

