

# Mississippi



## *Clubwoman*

Volume LXVII, Number 1

Fall 2012

# GEWC-MFWC



**Honoring Past Gifts While  
Celebrating the Present  
...Freedom to Volunteer!**

## CONTENTS

Messages.....	3
District Presidents.....	5
Special Appointments.....	7
GFWC Community Service Programs.....	10
GFWC Advancement.....	14
Awards, Contests, and Grants.....	16
2012-2014 Dues Form.....	19
Directory.....	20
MFWC Photos.....	29
2012-2013 Budget.....	31
2012 GFWC Awards.....	31

## IMPORTANT DATES

October 25 – 28	Southern Region Conference, Augusta, GA
November 1	Dues Deadline for Honor Club recognition
January 1, 2012	Dues Deadline for reports to be eligible for judging
February 1	Deadline for District Dues
February 1	Deadline to postmark reports for judging
February 1	Deadline to postmark Hebron Memorial Scholarship Applications
February 1	Deadline to postmark Challenge Grant Applications
February 7	Deadline to postmark MS LEADS Nominations
February 9	Executive Board Meeting, Jackson, MS
February 9	Judging Day
February 9	Deadline for submissions for <i>Mississippi Clubwoman</i>
February 10	Deadline to postmark Clubwoman of the Year and Juniorette of the Year Nominations
February 15	Scrapbooks and Yearbooks due to District Books Chairman
February 23	District I Convention, Poplarville, MS
March 1	Deadline to postmark Sarah Peugh Butterfly Scholarship Applications (Juniorettes)
March 1	Deadline for Club History Reports
March 2	District II Convention, Location TBA
March 9	District III Convention, Location TBA
March 15	GFWC-MFWC State Chairman Reports due to GFWC Chairman
March 16	District IV Convention, Batesville, MS
March 23	District V Convention, Raleigh, MS
April 25 – 27	115 <sup>th</sup> GFWC-MFWC State Convention
April 25 – 27	Eagle Ridge Conference Center
April 25 – 27	Raymond, MS
June 30 – July 2	122 <sup>nd</sup> GFWC International Convention
June 30 – July 2	Hollywood, FL

### GFWC Mission Statement

*"The General Federation of Women's Clubs is an international organization dedicated to community improvement through volunteer service and to providing opportunities that strengthen the role of women."*

### MFWC Mission Statement

*"The Mississippi Federation of Women's Clubs, Inc. is an organization of women whose goal is personal enrichment leading to volunteer service that benefits the community, state, nation, and world."*

# Mississippi Clubwoman

Volume LXVII, No. 1, Fall Issue

**Editor:** **June Vaughn**  
89 CR 257  
Bruce, MS 38915  
662-983-4019 – h  
662-983-8399 – c  
junevaughn@brucetelephone.com

**Assistant Editor:** **Jeanette Thrash**  
P. O. Box 906  
Decatur, MS 39327  
601-635-2699 – h  
601-479-3101 – c  
jbthrash39@gmail.com

**Circulation Editor/Website Chair/ Handbook Editor/Newsletter Editor:** **Lisa A. Harris**  
822 SCR 115 South  
Raleigh, MS 39153  
601-940-1519 – c  
laharris@hughes.net

**GFWC-MFWC State President:** **Suzanne Byrd Poynor**  
225 Briarhill Cove  
Florence, MS 39073  
601-845-7014 – h  
601-668-9627 – c  
suzpoynor@aol.com

**Website:** [www.gfwc-mfwc.org](http://www.gfwc-mfwc.org)

**Official Publication:** **Mississippi Clubwoman**

**State Headquarters:**  
2407 North State Street, Jackson, MS  
(Physical address only-not a mailing address)

**Printers:** **Watermark Printers**  
1085 Stark Road, Starkville, MS 39759

**Article Deadlines:**  
**Spring 2013** February 9, 2013  
**Fall 2013** June 24, 2013  
**Spring 2014** February 8, 2014

- ❖ Please send **ALL ADDITIONS (with DUES)** to your Club Roster directly to the **State Treasurer, Diane Rouse**, 2323 Tiffany Circle, Florence, MS 39073. She will, in turn, forward to the **Circulation Editor, Lisa A. Harris**.
- ❖ Please send **ALL DELETIONS AND CHANGES** to your Club Roster directly to the **Circulation Editor, Lisa A. Harris**.
- ❖ Requests for additional magazines (if available) should be addressed to the **Editor, June Vaughn**.

**If you wish to keep current or be updated on GFWC-MFWC events and news, please "like" our facebook page at [www.facebook.com/Mississippi-Federation-of-Womens-Clubs-Inc](http://www.facebook.com/Mississippi-Federation-of-Womens-Clubs-Inc)**

**Message from 2012-2014  
GFWC International President  
Mary Ellen Laister**



My Dear Fellow Club Members:

It was with great humility and a very humbling experience that I was installed on June 17, 2012, in Charlotte, North Carolina, as the 49th International President of the General Federation of Women's Clubs.

The theme of the 2012-2014 administration is **Remember the Past to Step into the Future**. Our Federation is rich in history and accomplishments. The history has been set in stone on the administration that has just closed. Today, we are opening a new chapter in our GFWC history, and we are on page one. Our only limitation is ourselves, and now the sky is the limit.

The *Club Manual* has been delivered to your clubs with a new exciting look, which is very professional, very user friendly, and contains lots of new information. The *Club Manual* was written by the 2012-2014 GFWC chairmen and committee members, in conjunction with our professional staff at GFWC Headquarters.

The "dreaded club reporting" that every club woman is afraid to tackle has been revamped into a very simple system. This was initiated at the GFWC Board Orientation in Alexandria, Virginia, in November 2011. A mixture of GFWC Officers, Region Presidents, State Presidents, chairmen, and committee members worked together to improve the reporting system. Refer to the printed *Club Manual* or refer to [www.GFWC.org/ClubManual](http://www.GFWC.org/ClubManual) for more information.

The main focus of this administration will be Public Relations, Membership, and Leadership. We will present interactive workshops at all eight Region Conferences. We are going to provide the tools so that you will successfully increase your membership during this administration—and into the future.

We are electrified and excited by you, the clubwoman.

Yours in Federation,  
Mary Ellen Laister

**In Memoriam  
Mrs. Booster (Julia Faye) Algood  
MFWC President 1988-1990**

Mrs. Booster (Julia Faye) Algood died on May 20, 2012, at St. Dominic's Hospital at the age of 93.

Mrs. Algood was a native of Pickens but had lived in Jackson and was a member of Parnassus Club. She was an MFWC member for many years. She served as MFWC President 1988-90. She also served as President-Elect 1986-1988, 1st Vice President 1984-1986, and Recording Secretary 1982-1984.

As state president her theme was "Today for Tomorrow." Her special project was the MFWC Headquarters. During her administration, the headquarters was placed on the National Register of Historical Places. It was the only Jackson building honored in 1988.

When she announced her project, Mrs. Algood said: "Our early presidents were farsighted enough to realize the necessity of a headquarters. Let us as a tribute to past presidents, continue to restore and preserve this building."

She is survived by several nieces and nephews. To honor Mrs. Algood, you may send a donation to The 1935 Society.

**Message from 2012-2014  
GFWC-MFWC President  
Suzanne Byrd Poynor**



Dear GFWC-MFWC Friends:

As we begin the 2012-2014 Administration, it is with enthusiasm, optimism, and pride that I extend best wishes to you. During the Post Convention and Summer Board Meetings of our GFWC-MFWC Officers and GFWC-MFWC Board, the room was filled with a SPIRIT of excitement and caring. Each person was anxious to implement plans for a new time of volunteer service to improve the community, state, nation, and internationally. As you read the information in each article in our *Mississippi Clubwoman*, I HOPE that you, our GFWC-MFWC Clubwomen, CATCH that SPIRIT!

*Honoring Past GIFTS while Celebrating the PRESENT...FREEDOM to VOLUNTEER!* is the theme for the next two years. The President's Special Project will Honor our Veterans and Celebrate the Bravery of those currently in Military Service to ensure our freedoms. These FREEDOMS provide the foundation on which our GFWC-MFWC Clubwomen have the CHOICE to VOLUNTEER, FREEDOM to VOLUNTEER!

My father's military service in WWII was an inspiration to me in choosing the President's Special Project. For the next two years, please join me in participating in programs and projects that better the lives of our Veterans and Active Military Women and Men in our communities, state, nation, and internationally. ANY and ALL projects that support our Veterans and Military are included in this Special Project. Needs in our Veterans Homes in Jackson, Collins, Oxford, Kosciusko, and Gulfport offer numerous opportunities for volunteer service. The families of those away from home in Military Service are scattered throughout Mississippi. They need our encouragement and support. Those serving away enjoy receiving cards, snacks, and supplies from those back at home. Through the GF Partnerships such as Sew Much Comfort and the various USO Programs, there are numerous ways that our Mississippi Clubs can find the right fit to participate in the President's Special Project. Annajeral Knight, Chairman of the President's Special Project, and her committee are willing to connect you with many worthwhile projects.

Membership will continue to be a focus of this administration. Darlene Adams, our GFWC-MFWC President-elect, will serve as Membership Chairman. Darlene and the Membership Committee have many exciting ideas and plans to build our GFWC-MFWC Membership. Long Range Planning Chairman, Tommye Rosenbaum, and Committee will also have Membership as an area of concentration. I KNOW with these dedicated clubwomen providing our clubs with the Membership Resources they need, our GFWC-MFWC Membership MUST INCREASE.

REPORTING is REVAMPED to a simple system by GFWC. Under Sue Addy's leadership and guidance as our GFWC-MFWC Dean of Chairmen, there will be a smooth transition. I always try to keep in mind that change provides new opportunities. Sue and I are available to assist you, IF you need us! Reading the 2012-2014 GFWC Manual is suggested. Your Club President should have received the 2012-2014 GFWC Club Manual. The GFWC Club Manual can be found at [www.GFWC.org/ClubManual](http://www.GFWC.org/ClubManual).

Congratulations to the outstanding 2010-2012 Administration of Tammie McCoy! It was a joy to attend GFWC-MFWC Meetings as well as to travel with Tammie throughout the State, to Southern Region Conferences, and GFWC International Conventions. Tammie, thank you for

sharing your wisdom with me! How proud I was to accompany you as we accepted 14 Awards for GFWC-MFWC in Charlotte, North Carolina. Also, Mississippi beamed with pride when your name was called as one of the twelve winners of the Charlotte Emerson Brown Award for Excellence in State Leadership.

Serving as the 58<sup>th</sup> GFWC-MFWC President is a tremendous honor. Thank you for allowing me this opportunity. Over the past 25 years, I have witnessed the inspiring leadership of many GFWC-MFWC Presidents and Clubwomen and their passion for VOLUNTEERISM. This passion was passed to them and now to the 2012-2014 Administration. What a LEGACY! May we make them proud...Freedom to Volunteer!

May we ALWAYS have the FREEDOM to Volunteer,  
Suzanne

### **GFWC-MFWC President-elect Darlene Adams**



What a joy it is for me to serve as your GFWC-MFWC President-elect! One I promise I will not take lightly. What an honor to serve under Suzanne Poynor and gain from all her expertise. I have big "shoes" to fill as your Membership Chairman. Speaking of shoes, GFWC's Membership Theme is "The Sole of the Federation." We will have the "Coveted Shoe Award" and learn about "Sole Sisters." You will be hearing a lot of play on words to go along with that theme. It may be a great excuse to go shoe shopping! What do the actors call it - method acting or field study? Either way, duty calls; are you with me?

My Membership Committee consists of my "Sole Mates" who serve as District President-elects: Sherri Reid, District I, Theresa Buntyn, District II, Terrie Whitehurst, District III, Ella Cronin, District IV, and Melba Watkins, District V. We will be sharing new ideas for membership recruitment and retention with you. **(SEE MEMBERSHIP ON PAGE 15)**

I am pleased to announce that the Long Range Planning Committee's main focus this administration is to increase federation membership and will work with our committee to stop the decreasing numbers that have plagued many organizations such as ours. I appreciate Chairman Tommye Rosenbaum for her passion and willingness to preserve our federation.

The quote I will use throughout this administration is  
**"One shoe can change your life."** (*Cinderella*)

Did GFWC-MFWC change your life? I know it did mine – therefore, change a life, one member at a time.

My next assignment is Advisor to the District Presidents. I'm forever grateful to have served as District I President for three years so I will better understand the needs of these presidents. Your District Presidents are: Nancy Griffin, District I, Anne McKee, District II, Sandra Pope, District III, Mary Ellen Holloway, District IV, and Cindy Holcomb, District V. Your District Presidents have put on their "running shoes" and have already hit the ground hard to serve your district. My desire for these next two years is for District Presidents to better communicate with their respective clubs, find out their needs, and determine how MFWC can assist them. We are willing to travel to any club that would like a one-on-one consultation.

Don't forget to check out my monthly News Notes, "Darlene's Heart and Sole" on our MFWC website. Hmm...there just may be a clue in the mist of the newsletter for readers to find.

I am on a very "fast track" the next two years as an MFWC officer. I ask for your patience and by all means, your love and support. Thank you for being my federation friend.

### **GFWC-MFWC Vice President Sue Addy**



We are off on another adventure with great gifts in store for us as we undertake the task of reporting. With each new administration there are varied changes, but in this case change is good!

**1. Clubs will no longer report directly to GFWC.**

**2. Our MFWC Clubs will report using our own report form** that is tailored to our needs but also in accordance with the GFWC Statistical Form. Individual reports under a cover sheet will include up to two pages single space narrative and three pages of supportive material. The club president will send all copies of cover and narrative to **Suzanne Poynor, GFWC-MFWC President, 225 Briarhill Cove, Florence, MS 39073** and all copies of cover, narrative, and supportive material to **Sue Addy, Vice President, 211 Long Street, Union, MS 39365**. Reports should be postmarked by February 1, 2013, for work done during 2012. Dues must be paid before January 1, 2013, in order to be judged.

**3. We will not have a Collaboration Chairman...**only a Community Service Program Chairman and a Community Service Program Partnership Chairman. There will be two reports for each of the six Community Service Programs. There will also be one chairman with one report for each of the five Advancement Areas and the Special Projects (GFWC, MFWC and Junior Projects).

**4. The MFWC Report Form will be two pages.** Page one includes GFWC Special Projects and Community Service Programs and Partnerships. The statistics for each specific partnership will be detailed. Page two includes the GFWC Advancement Areas (5), Fundraising, and MFWC Special Projects. The cover sheet for each narrative should include only the information for that specific report.

**5. The club president will fill out both pages to include all club report statistics** which will provide the statistics for the MFWC President to report on the GFWC Statistical Report Form.

**6. Please note that Money is described four different ways in the total on the final page.** *Dollars donated* and *In-kind donations* are in Special Projects and CS Programs; *Dollars spent* are in Advancement Areas; and *Dollars raised* are in Fundraising. All are totaled separately and are each defined at the bottom of the second page.

**7. Reporting guidelines have changed for State Chairmen.** Only the GFWC President fills out a GF Statistical Form. There are two cover sheets that state chairmen should use to accompany the narratives and send to their GF Counterpart.

a. **State Award Entry** will include up to two pages describing no more than ten specific projects completed by clubs that have made the most impact on the community or club. One additional page, single spaced, will describe the activities at the State Federation level initiated and organized by the state or chairman.

b. **Club Creativity Award Entry** will be a one page narrative of the most creative project by one club for consideration for the \$50 creativity award. The State Chairman is responsible for completing the cover sheet and attaching it to the narrative that she rewrites.

I am looking forward to the new administrative changes and opening each of the gifts that you send my way in February.

**Remember to nominate a deserving clubmember for 2012 Clubwoman of the Year and Juniette of the Year by February 10, 2013. Guidelines are printed in the MFWC Handbook and available on the MFWC Website.**

## **GFWC-MFWC Recording Secretary Abby May**



First of all, let me say Thank You for the opportunity to serve you and our federation as Recording Secretary. As Recording Secretary, I will record the information of our organization impartially, accurately, and in a timely manner (as best I can).

As keeper of the records, our history will be preserved by the compiling of the reports, minutes, and documents of Mississippi Federation (in at least 2 books)

I have already learned that the best part of the job is being at the "front" and "roll call" because I can see and hear the commitment of others and know the future of the federation is in good hands.

And of utmost importance, we have a budget to start the 2012-2013 administration.

As we begin this new administration, let's not forget to *Honor Past Gifts while Celebrating the Present... Freedom to Volunteer!*

## **GFWC-MFWC Treasurer Diane Rouse**



It is a great honor to have been elected as your 2012-2014 MFWC Treasurer. I appreciate the work of my predecessors, Merle McLeod and Shirley Hilburn, for setting such an excellent standard of record-keeping. Using their examples will make my job much easier.

The **2012-2104 MFWC DUES FORM** is included in this issue of your *Mississippi Clubwoman*. Please make sure your club treasurer uses this form and not previous years' forms when mailing in dues, etc. Also remember to attach to the dues form two (2) copies of your club roster in alphabetical order.

Dues forms must be postmarked no later than **November 1** in order for your club to be recognized as an Honor Club. Clubs whose dues are not postmarked by January 1 **WILL NOT** be eligible to have reports judged or receive awards at State Convention.

As your club adds new members during the year, please send their names, addresses, and dues of \$25 for general members/\$20 for juniorettes to my attention: Diane Rouse, 2323 Tiffany Circle, Florence, MS 39073.

Personal and club donations are always appreciated and may be mailed to me at any time during the year to honor someone. An appropriate card will be mailed to the honoree or her family as an acknowledgment of these gifts.

## **Mississippi Clubwoman Circulation Editor/Website Chair/Handbook Editor/Newsletter Editor Lisa A. Harris**



I would like to thank everyone who uses our website and facebook page. All GFWC and MFWC news, updates, and forms can be found at [www.gfwc-mfwc.org](http://www.gfwc-mfwc.org). If you would like to receive immediate updates, notes, and greetings from the MFWC, please go to our facebook page and "like" us. If you would like updates and news by email, please send your name and email address to me at [laharris@hughes.net](mailto:laharris@hughes.net). For those of you who did not order a printed 2012-2014 MFWC Handbook, you may

download the entire book from this link: [http://www.gfwc-mfwc.org/pdf/GFWC\\_MFWC\\_Handbook/2012\\_2014/2012\\_2013\\_GFWC\\_MFWC\\_Handbook\\_B\\_W\\_V4.pdf](http://www.gfwc-mfwc.org/pdf/GFWC_MFWC_Handbook/2012_2014/2012_2013_GFWC_MFWC_Handbook_B_W_V4.pdf).

Pictures of club activities as well as news articles are needed for upcoming issues of our online newsletters, the *MFWC News* and *Juniorette Jazz*. Please send submissions to [laharris@hughes.net](mailto:laharris@hughes.net). All pictures (with captions) and articles are welcome!

## **GFWC-MFWC Historian Misty Wright**



Please help our organization preserve its heritage by submitting your club's history each year. The histories are combined and bound in book form and placed at State Headquarters so that they will be preserved. This is a valuable tool for anyone wishing to research an individual club or MFWC in the future. It is important that every club send in its history. Certificates will be given at State Convention to those clubs that do send in a history. **Just fill in the one page form provided in the MFWC handbook or on the MFWC website.** It will mean much to clubwomen of the future. In addition to the form, a concise narrative (no more than one page) may be added describing outstanding programs and/or projects of your club year. Do not include photographs. Please do not fold, staple, or punch holes as your actual report will be bound into the state's history book for the year.

Histories are due **March 1, 2013**. They are to be mailed directly to me at: 115 Holly Cove, Batesville, MS 38606

## **GFWC-MFWC Juniorettes Mandy Mullins Laiche, Director**



Mississippi Juniorettes have had an amazing 2012 so far! In April, several Juniorettes attended the MFWC State Convention. The clubs of the year were awarded at the convention banquet. Fourth place Club of the Year went to Fulton Juniorettes. Third place Club of the Year went to Pontotoc Juniorettes. Second place Club of the Year went to Bruce Fine Arts Juniorettes. First place Club of the Year went to Dixie Daisy Juniorettes. Congratulations to all the amazing girls, and thanks so much to the advisors for making sure they turned in their reporting. I was honored to present the Sarah Peugh Butterfly Scholarship to Miss Bethany Wilemon of the Fulton Juniorettes. Congratulations Bethany! I was also honored to present a prestigious award for Juniorette of the Year. This was the very first year for this award to be presented, and it went to Miss Kelsey Jackson of the Dixie Daisy Juniorettes. Congratulations Kelsey! At the time of writing this, we are busy planning the summer Juniorette Retreat which will be held July 28<sup>th</sup> and 29<sup>th</sup> at Mrs. Carolyn Huey's barn. I can't wait to tell you all about how it goes in the next magazine!

## **District Presidents' Reports**

### **District I – Nancy Griffin**



We have kicked off our celebration of veterans with the Poynor administration! I am so excited about the opportunities that we have to honor the men and women who have served in our military. They have put their lives on the line for you and for me. They have risked everything for our freedoms. There are so

many ways that our clubs can recognize and serve our military veterans. I anxiously wait to hear all you are doing for our veterans.

Suzanne and I have a bond between us with her President's Special Project. Her father and my father were nose gunners in the Air Force, formerly the Army Air Corps. I am sure we will have much to talk about in the next two years.

Recently I visited the World War II Museum in New Orleans and was amazed at the displays. My group left me because I was so wrapped up in the stories and films available for the guests. The movie theater was so action packed, and the special effects made you feel as if you were right there on the battle front. If you have never been to the WWII Museum, I invite you to take the time to experience it for yourselves. It is something you will never forget. (You could take a veteran with you and that would be a project for you to report.)

We, in District I, will be busy during this administration. We will be hosting the State Convention in April 2013. Before we can recuperate from state convention, Mississippi will be hosting the Southern Region Conference in Biloxi in October 2013. We will have a lot to do since the venue is located in our district. We will need to dust off our work boots and work gloves in 2013 to ensure the success of these two events.

Good Luck to Fidelia Club of Ellisville, Woman's Club of Gulfport, Lucedale Fine Arts Club, Lucedale Woman's Club, Fortnightly Club of Moss Point, Pascagoula Civic Guild, Cosmopolitan Club of Petal, Civic Woman's Club of Picayune, Poplarville Woman's Club, Fine Arts Club of Waynesboro, Home and Garden Club of Waynesboro, Present Day Club of Waynesboro, Juniors Club of Pascagoula, Picayune Service Club, and Sub Debs of Waynesboro with all of your projects and events this year. I look forward to reading your reports in February to see what all you have been doing in your local clubs. The clubs in District I always do an outstanding job serving their communities.

Let me hear from you and your club. I would love to visit your club meetings and projects. All you have to do is call me at 601-798-8591 to let me know when and where, and, if possible, I will be there.

### **District II – Anne B. McKee**



Today, the Mississippi temps soared to 101 degrees. Hey, that's nothing to the hot, hot, hotties of District II. We work it ... work it ... work it – no matter; thermometer, barometer – whatever. The weather rock is our mainstay: Wet – raining, Dry – sunny, Hot – summer, Cold – winter. We just grab the umbrella or cold-weather jacket – tee-shirts/shorts, and we're ready to go. Sometimes, we pull on the sequins and long dresses, plus strappy sandals – it's all the same. Yes, Federation Work is the Name of the Game. I'm so proud of my District II Clubs. Allow me a SHOUT-OUT to Ackerman, Enterprise, Decatur, Philadelphia (Futura & Woman's Club), Sallis, Union, Walnut Grove, Quitman, Kosciusko, and Meridian (Round Table & Fortnightly). MFWC, DISTRICT II – YOU ROCK!

I am especially excited about "FREEDOM to VOLUNTEER" President's Special Project with an emphasis pertaining to present and past military needs – active and veteran. Thank you, President Suzanne Poynor, for the opportunity to uplift and acknowledge our valiant, true, and brave men and women in uniform.

The Ninety-second Annual Convention of GFWC-MFWC District II met at the Meridian Activities Center on Saturday, March 10, 2012, and was hosted by Thursday Club of Walnut Grove, Fortnightly Club of Meridian, and Round Table Club of Meridian. The facility was decorated with an Irish theme. The "Rapping Leprechauns" (who shall remain anonymous)

presented a questionable, but enjoyable skit with song and dance (oh, so light on the feet). Completing the theme, District II presented President Tammie McCoy 254 pounds of Irish Stew to support MFWC President McCoy's special project, "Feeding Fellow Mississippians." Fannie Johnson of Love's Kitchen, Meridian, was on hand to receive the "stew gift." Congratulations to District II Club of the Year – Quitman Woman's Club. The 2012 Clubwoman of the Year was a tie – Congratulations to Sue Saxon of Philadelphia Woman's Club and Jennie Lucas of the Ackerman 20<sup>th</sup> Century Club!

The 2010-2012 GFWC-MFWC year is in the books and what a year it was! Congratulations to President Tammie McCoy for her constant and inspiring leadership. Now it is time to turn our faces toward the New Year in Federation – "HONORING PAST GIFTS while CELEBRATING the PRESENT ... Freedom to VOLUNTEER!" Let us give MFWC President Suzanne Poynor our BEST District II respect and support.

### **District III – Sandra Pope**



Here we are again at the beginning of a new administration which seems to always come quickly. I am so excited to have this unique opportunity to work alongside each of you District III talented and hard working clubwomen in our volunteer efforts to improve our communities. It is remarkable what a difference these efforts make in the lives of so many.

Thanks to all of the ladies and Juniors from the Bruce clubs who went above and beyond to make the 2012 District III Convention a great celebration of our district's accomplishments. Jo Uptain is to be commended for serving so tirelessly as District III President for three years and in continuing the legacy of excellent leadership our district is so proud of.

My first honor as President was to install the 2012-2014 officers of my own club, GFWC-MFWC Fine Arts Club of Bruce, in May. It would be my joy to visit with each club in District III for a meeting or club project or assist your club in any way. I look forward to your invitation.

A few housekeeping items...(1)Make recordkeeping of your volunteer service a priority; plan now to report even if it is only the cover sheet with hours and dollars so that all Mississippi club work can be counted through GFWC; (2) Send your club's dues to MFWC Treasurer Diane Rouse no later than November 1<sup>st</sup>; (3) Send District dues (\$1 per club member) to District III Treasurer Frances Brown; (4) Plan to attend our District Convention to be held March 9<sup>th</sup> in the northern part of our district. The exact location is not yet determined.

Dear friends in District III, may our gifts of service be wrapped in love and compassion and tied with dedication and commitment. Let's embrace President Suzanne Poynor's Special Project and exercise our "Freedom to Volunteer" to the fullest as we serve in our communities, state, nation, and world.

### **District IV – Mary Ellen Holloway**



The Indianola Civic League did a super job hosting the District IV Convention on March 24, 2012. Thank you, ladies, for a job well done. We even issued a stress call to clubs in other districts, and thanks to all of you who came to our rescue. The Mississippi Federation of Women's Clubs is a wonderful organization.

President Suzanne Poynor did not waste a minute putting together plans for the new administration. Her Special Project for 2012-2014, *Honoring Past GIFTS while Celebrating the PRESENT...FREEDOM to VOLUNTEER!*, is certainly timely.

There are numerous ways we can reach out to our veterans, active military, and their families. Suzanne and her committee gave ideas and suggestions for programs and projects at the Summer Institute in Jackson on July 14. Thank you to those of you who made a special effort to attend the Institute. We not only got ideas for programs and projects, but this time together served as a B12 shot to give us renewed energy and enthusiasm.

Please let me know if I can help you in your club work in any way. If I do not have a solution for your problem, I will call on my "support team" to come to our rescue.

### District V – Cindy Holcomb



It is my great pleasure to be the new president for District V. I look forward to the next two years and hope that I can be the leader that you deserve. District V is very active and always has so much to offer the citizens of their towns, Mississippi, and our national organization.

Congratulations to the District V club winners at the MFWC State Convention last spring. Keep up the good work as we show our "Freedom to Volunteer" the next two years.

I look forward to meeting with each club within the next two years. I appreciate the welcome of the Florentine Club of Florence and the privilege of installing their officers for 2012-2014. I appreciate the invitations I was unable to accept this spring and look forward to visiting another time.

Remember to read the new guidelines for 2012-2014 and report according to these suggestions. I look forward to reading about all the accomplishments of District V clubs. Have a great year as we plan for the "Freedom to Volunteer."

### GFWC-MFWC Special Appointments

#### BOOKS

**Cassie Bryant, Scrapbook Chair**  
**Lisa Barefield, Yearbook Chair**



The purpose of the scrapbook is to give a creative account of the club activities from January 1st through December 31st using photographs, newspaper articles, and other materials. Please take this



opportunity to brag about a year's worth of outstanding work.

The purpose of the yearbook is to give members as much information as possible concerning club, MFWC, and GFWC activities. Also use this to show a potential member what GFWC, MFWC, and the local club are all about.

#### DISTRICT CONTEST

Scrapbooks and Yearbooks must be postmarked to the **District Books Chairman** by **February 15th**. The chairman should see that the books are judged according to the guidelines found in the MFWC Handbook and on the Website [www.gfwc-mfwc.org](http://www.gfwc-mfwc.org). The same criteria will be used for state judging. General and Juniorette clubs are judged separately.

All scrapbooks and yearbooks judged **First Place** shall be taken by the **MFWC President** to the **State Books Chairmen**. The **District Books Chairman** is responsible for placing them in the President's car. She should make two lists of the books going forward, giving one to the President

and keeping one for herself. All other books must be picked up at the close of the District Convention by the club.

#### STATE CONTEST

All entries in the State competition must be picked up at the designated time at the State Convention by the sponsoring club. If no one from the club(s) is present, the **District President** should pick up the book(s) and see that it is returned to the club(s).

#### Youth Art Libby Everett, Chair



#### Guidelines For Youth Art 2012-2014

District First Place entries go directly to the State level competition. Each entry must be designated by Class and Division. Under "Rules" see information concerning labels. There are five divisions in each class.

#### Classes:

- A – Students receiving lessons from private teachers
- B – Students receiving instructions as part of a school curriculum
- C – Students receiving no art instruction

#### Divisions:

- Division 1 – Kindergarten – 5 years old
- Division 2 – Grades 1, 2 & 3
- Division 3 – Grades 4, 5 & 6
- Division 4 – Grades 7, 8 & 9
- Division 5 – Grades 10, 11 & 12

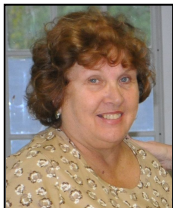
#### Rules:

1. Entries must be sponsored by an MFWC member Club.
2. Each Club may submit two entries in each of the five divisions of the three classes.
3. Typewritten identification cards must be firmly **attached to the front and back of each entry**. The label should contain the following information: Class, Division, Student's name and the complete name of the sponsoring club, city, and MFWC District. See example below.
4. All work must be original, done within the last 12 months. Items previously entered in MFWC contests are ineligible.
5. *Medium*: Any pastel or charcoal must be sprayed with a fixative or covered with transparent material.
6. *Dimensions*: Before matting, minimum size must be at least 8½ x 11 inches and maximum size must not exceed 20 x 24 inches.
7. *Mats and frames*: it is preferred that entries not be framed. Mats should be stiff enough to stand. Cover pictures with transparent materials to protect if desired. If framed, use only simple and inexpensive ones. **DO NOT USE GLASS** on entries.
8. *Originality*: Is the concept original? **NO COPIES !!!**
9. *Sensitivity*: Does the painting indicate a feel for color, form, materials, etc.?

#### Example of Identification Card:

Student Name:	_____
Grade:	_____
School:	_____
<b>Check the following Class and Division:</b>	
Class A	<input type="checkbox"/> Division 1 <input type="checkbox"/> Division 4 <input type="checkbox"/>
Class B	<input type="checkbox"/> Division 2 <input type="checkbox"/> Division 5 <input type="checkbox"/>
Class C	<input type="checkbox"/> Division 3 <input type="checkbox"/>
Sponsoring Club:	_____
City:	_____
MFWC District:	_____

**MFWC President's Special Project:  
Honoring Past GIFTS while  
Celebrating the PRESENT...  
FREEDOM to VOLUNTEER!  
Annajeral Knight, Chair**



It will be my distinct pleasure to serve as Chair of MFWC President Suzanne Poynor's Special Project, *Honoring Past GIFTS while Celebrating the PRESENT...FREEDOM to VOLUNTEER!*. Support and care for our Veterans and military is a cause near and dear to my heart, as most of you know. This Chairman knows Mississippi Clubwomen will find many opportunities to reach out. Our clubs will be finding ways to aid the families of military personnel currently serving and those who have served our country. We are deeply indebted to the men and women who have made sacrifices to ensure our freedom.

This special project will enable us to provide encouragement and meaningful assistance to those who made a "Choice to Volunteer." Those of you who attended post board meeting at State Convention were given a handout of ideas for programs/projects put together by Melba Watkins, Public Issues Chairman and myself. Thanks to Lisa Harris who has taken those and put them on the MFWC website. If you do not have access to a computer, please give me a call at 601-845-7097 and I will be happy to mail you a hard copy of the information for your club. I am always willing to help you in any way.

Remember we are free because they were/are BRAVE!

**Mississippi Public Broadcasting  
Elizabeth Powers, Chair**



The 2012-2014 administration will again ask our club members to support Mississippi Public Broadcasting. Our support dates back to 1968, before ETC went on the air. In fact, we played a most important role in the activation of educational television. For this, we can take great pride.

Our support has included providing an MAET Board member, charter members of the Board for the Friends organization and three chairmen, monetary donations, time and talent donations, contacting legislators and other elected officials to urge financial support, distribution of information concerning programs to be broadcast, volunteer readers, providing publicity for local media outlets, support for Between the Lions pre-school programs, and the list goes on. For these services, the Mississippi Authority for Educational Television is very grateful.

It is now imperative that MPB reach out to our citizenry to provide more financial assistance as we anticipate fewer dollars being appropriated by the legislature. We are at a critical point in our budgetary process. The Foundation for Public Broadcasting was chartered to support and help fund MAET. Our club members can play an important role in this endeavor by making a concerted effort to encourage the clubs to make a contribution to MPB in the name of the club as well as encouraging individual membership, and encouraging other organizations to make MPB a part of their benevolent budgets. You can help the Foundation by providing the names of contact persons of local industries and businesses for the Foundation to contact as possible program underwriters. This is a wonderful way to promote a local business. It can be a real win-win opportunity.

You are asked to seriously consider the contributions to the citizens of our State through Mississippi Public Broadcasting. It truly is a gift to be treasured and should be supported by all Mississippians. Please carefully consider the report form that can be printed from the MFWC website [gfwc-mfwc.org](http://gfwc-mfwc.org) and plan club programs and individual activities to support Mississippi Public Broadcasting.

**Hebron Memorial Scholarship  
Ione Bond, Chair**



The Hebron Memorial Scholarship Committee is again asking for your support. We are beginning a new administration for clubs to support our annual scholarship established many years ago in honor of our first MFWC president, Elizabeth Hebron. It benefits a female undergraduate or graduate attending a Mississippi Institution of Higher Learning. The annual scholarship is a grant of up to \$1,000 and is supported by voluntary contributions. The only way we can ensure the scholarship continues is through monetary gifts from clubs each year. We ask each club to donate a minimum of \$10. If you wish to give more, please feel free to do so!

There is a line on the 2012-2014 GFWC-MFWC DUES FORM for you to list your contribution. Remember the postmark deadline for ladies wishing to send in an application is February 1, 2013. Guidelines can be found in the MFWC Handbook and on the Website at [www.gfwc-mfwc.org](http://www.gfwc-mfwc.org).

**Long-Range Planning Committee  
Tommye Rosenbaum, Chair**



The Long Range Planning Committee, composed of the five district presidents, will be assisting Darlene Adams, Membership Chairman, in her membership drive during the 2012-2014 administration.

The committee feels that increasing membership is MFWC's most pressing need.

In order to make our work successful, we need the help of all federation members. We are asking you to actively recruit members for your club. We also ask you to help us identify communities who may be interested in forming a new club.

Please submit the names of communities to this committee with the names of contact women.

With your help, we can increase our membership. Please make this a priority in your club during 2012-2014.

**GFWC-MFWC Headquarters  
Teenie Boone, Chair**



Your MFWC Headquarters was "decked out" in Red, White, and Blue for the Summer Board Meeting on June 29-30, 2012. President Suzanne Poynor's ninety-member board had over sixty members attending on Saturday with the Executive Board meeting on Friday.

The H.Q. Committee is made up of one member from each district, officers, and members-at-large. They are: District I-Libby Everett of Petal; District II-Coreen VanDevender of Union; District III-Cathy Higgins (new) of Booneville; District IV-Sharon Hudson (new) of Batesville; District V-Dee Payne of Florence; Chairman Teenie Boone of Florence; Assistant Belinda Peacher of Florence; Ex-officios: President Suzanne Poynor, President-elect Darlene Adams of Picayune, Vice President Sue Addy of Union, Meetings Coordinator Terrie Whitehurst of Iuka, and Members-at-Large:



Marie Boswell of Cleveland, Jackie Richardson of Union, and Sue Thompson of Meridian. Thank all of you for serving!

The H.Q. was all cleaned on the inside and the outside during the summer, and painting began on the screens and windows. The next outside need will be painting the dentil moulding trim. Miss "1935 Society" herself, Past President Sue Thompsom, is chairing a rejuvenation of "The 1935 Society Fund" to raise funds for the needed up-keep on the H.Q. Thanks, Sue! One way you can help is to remember the "1935 Society" in your budgets and make sure to designate any donations for "1935 Society." Some of our dues go to the H.Q. Fund to pay for utilities where thermostats are put on 80 in the summer and 50 in the winter to keep bills down except for the apartment where someone lives. PLEASE HELP!

Please let me know when you would like to have a meeting at H.Q. or come by for a quick visit/tour. The H.Q. was open after Summer Institute for those who wished to go by for a quick walk through. Hope to see you soon!

**2012-2014 Administration  
Donations to the 1935 Society  
thru June 30, 2012**

**IN HONOR OF:**

Celia Fisher by District III  
Jessie Mae Everett by Jeanette Thrash  
Suzanne Poynor by Diane Rouse

**IN MEMORY OF:**

Nancy Daugherty by Ruth Ellen Cox

**State Institutions  
Jeannie Pittman, Chair**



As we enter the 2012-2014 administration, I am looking forward to serving as Chair of State Institutions again. Everyone knows how much I love doing this, especially since you make it so easy. In 2011, 30 clubs reported almost 2,015 hours of service along with almost \$15,000 in donations.

Our clubs bought Braille books for the MS School for the Blind and uniforms for the MS School for the Deaf. Kids from both schools had a great time at Space Camp thanks to your donations. It was exciting to hold Summer Institute at the MS School for the Blind and Deaf where everyone enjoyed the beautiful new building, grounds, and food.

MS State Hospital also had a successful year. Members served at the Masquerade Jewelry Sale in May and the Fine Jewelry Sale in July. MS State Hospital Day was great fun. Many thanks to all who cooked and for all your donations. I encourage MFWC clubwomen to join Friends of MS State Hospital and become more involved.

Volunteer hours included judging talent shows, working the Farmer Jim Neal Golf Event, providing donations, and assisting the hospitals with Christmas presents and parties. There are many wonderful things being done for those in need. I am looking forward to another great term serving with you.

**Ways & Means  
Amy Jacobs, Chair**



As we start the new administration, let us thank you in advance for your support of Ways and Means. The monies raised supports the MFWC President's Special Project – Veterans and Military Emergency Needs Fund. In buying the items, you Honor Past GIFTS while Celebrating the PRESENT...FREEDOM to VOLUNTEER!

The items for purchase are MFWC t-shirts-\$15.00; note cards-10 for \$10, 5 for \$5.00 or 1 for \$1.00; and 2013 Calendar-\$15.00. Still available are MFWC charms and pins.

There are limited supplies of last administration items on SALE: MFWC mouse pad, aprons, umbrellas, and cloth grocery bags.

There will be "opportunities to own" at all meetings so always bring your "greens."

We look forward to serving you this administration as you give your monies.

**Challenge Grant  
Phyllis Whittington, Chair**



The Challenge Grant is awarded to a teacher from the State of Mississippi that will use the money to benefit her students with Learning Disabilities. It could range from \$50 to \$300. It must be used in the classroom to purchase additional supplies, implement new programs, buy advanced technology, etc. The money must be used to benefit the students.

Do you have a teacher in your area that could benefit from this Grant? Think about your school district, and then give a most deserving teacher the Challenge Grant form to complete. The applicant must have a letter of recommendation from a school official and one from one member of the local GFWC-MFMC sponsoring club. It must be postmarked by February 1<sup>st</sup> to be judged. Mail the completed Grant application with the two letters of recommendation to Phyllis Whittington at 5315 Berrytown Road SE, Meadville, MS 39653

**Sarah Peugh Butterfly Scholarship  
Shirley Hilburn, Chair**



Congratulations to Bethany Wilemon of Fulton on being the 2012 recipient of the GFWC-MFMC Sarah Peugh Butterfly Scholarship. This scholarship, in the amount of \$1,000, is awarded each spring to a GFWC-MFMC Juniette club member who will be graduating from high school in the same year. The scholarship is funded by both

general and juniette clubs across our state. Applications for this scholarship should be made by letter to GFWC-MFMC President Suzanne Poynor before March 1 of each year. The scholarship recipient will be selected by the Sarah Peugh Butterfly Scholarship panel, which also includes President Poynor. The winner will be notified at least one week before the GFWC-MFMC State Convention, and the name of the winner will be announced at that convention.

Applications should include the following information:

- Name, address, age, and photograph of applicant
- Name and address of applicant's parents
- Name of GFWC-MFMC Juniette club applicant holds membership in and number of years applicant has been an active member
- Name of high school from which applicant is graduating and grade average
- List of ACT Assessment scores
- Leadership activities: appropriate high school/community and Juniette club activities including all awards and positions of leadership
- A letter of recommendation from the GFWC-MFMC sponsoring club advisor to the Juniette Club in which the applicant holds membership
- A letter of recommendation from the GFWC-MFMC sponsoring club president

Applications should be mailed to: Suzanne Poynor, GFWC-MFMC President, 225 Briarhill Cove, Florence, MS 39073

## Community Service Programs

### ARTS

#### **Shirley Stough, Partnership Chair**



GFWC Partnerships are formal relationships and mutual understanding between GFWC and a particular organization. GFWC has informed Partners of GFWC clubs' specific needs and our organizational structure. Thus, GFWC Partners offer materials, kits, speakers, and/or other information specifically designed for GFWC clubs.

GFWC Arts Partner is the American Mural Project (AMP), an organization focused on creating the largest collaborative piece of indoor art to celebrate American ingenuity, productivity, and commitment to work. Located in Winstead, Connecticut, the exhibit and the adjacent arts center are open to the public.

Local GFWC clubs can support AMP by designing projects in the following categories: Faces Make Places; Celebrating Workers in Our Communities and Art Project Honoring Important People in Your Community. Your projects will honor deserving people who contribute their skills to building our communities. Use the following contact information for suggestions for projects: [www.AmericanMuralProject.org](http://www.AmericanMuralProject.org), [info@AmericanMuralProject.org](mailto:info@AmericanMuralProject.org), and 860-379-3006.

#### **Theresa Berryhill, Program Chair**



GFWC describes our mission of the Arts Community Service Program as a program that encourages members to promote and support arts activities in all communities. It is designed to inspire and engage the creative ambiance within their lives. What a rewarding opportunity we have to create programs and projects that foster and promote the artistic experience that influences the lives for citizens in our communities. The following are several diverse selections of ideas to incorporate art-related activities for our 2012-2014 club years:

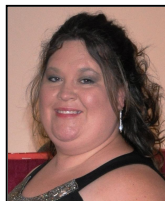
- Invite local musicians to club meeting.
- Organize a trip to local galleries, exhibits, or festivals.
- Volunteer as a group at local art venues.
- Participate in art, dance, and music courses within your community.
- Donate tickets for others to attend cultural events.
- Establish scholarships for students studying the arts.
- Collect musical instruments to donate to schools and local community art groups.
- Establish awards for club and community members acknowledging their artistic achievements.
- Establish and support artist-in residence programs and artist speakers.
- Promote local stage, screen, television, and video festivals in your area.

I am looking forward to working with all the MFWC clubwomen promoting the ARTS. Please call or email me if I can be of assistance to your club.

ART is essential to the quality of Life!

## CONSERVATION

#### **Whitney Smith, Partnership Chair**



Conservation is defined as "a careful preservation and protection of something; especially: planned management of a natural resource to prevent exploitation, destruction, or neglect." GFWC plans to partner with organizations that will offer materials, speakers, kits, and/or additional information specifically designed for our clubs to preserve, maintain, and restore our natural resources.

At the time of this writing, those agreements are not finalized. Be on the lookout for updates from the GFWC Conservation Community Service Program Partnership Chairman in News & Notes, *GFWC Clubwoman Magazine*, and online at [www.GFWC.org](http://www.GFWC.org) or [www.gfwc-mfwc.org](http://www.gfwc-mfwc.org).

In the meantime, clubs can focus on conservation projects in your community. These projects can be small steps, such as inviting a local expert to come and talk to your club or as elaborate as creating a community garden. Try incorporating topics such as recycling, tree planting, and wildlife protection. Volunteer to clean the sides of highways or provide local animal shelters with needed materials. You will be amazed to see the difference it makes in your lifestyle and the lives of others.

In our house we have really embraced conservation and have planted a garden and started a compost barrel. We are raising chickens, 10 and they are all named thanks to my assistants, who are 8 and 4. It has been a learning experience to say the least, but I am amazed at how quickly my children have taken to working in the garden and how much they love the chickens. I feel as if I am teaching them to be self sustaining citizens in the future and instilling an ethic of hard work and responsibility that will last their whole lives.

Remember we as club members can impact our world by looking at our communities and seeing the needs, educating ourselves on community projects we can participate in, informing others of the needs and getting them involved, and finally CREATING CHANGE.

#### **Belinda Peacher, Program Chair**



I am excited to be on board with MFWC President Suzanne Poynor as her Conservation Chair! Her special project, *Honoring Past GIFTS while Celebrating the PRESENT...FREEDOM to VOLUNTEER!*, gives us the opportunity to honor our military through Conservation. Some project ideas include: erect a flag pole and/or beautify an existing flag pole by planting flowers around it to honor a veteran or military unit in your town; plant a rose garden in your town to honor women who have served in the military or at least plant a rose bush; buy a park bench in honor of a veteran or military unit; or join together and build a walking path or enhance a trail with a patriotic plaque. I'm sure your club can embrace one of these ideas and most likely come up with some great ones of your own! When you do, please take photos and email them to me. I would like to get them posted online.

As always, remember your on going Conservation projects... recycling - even at your meetings, beautification, wildlife protection, soil conservation, tree planting, proper care for domesticated animals, food sources, land maintenance, community gardens, waste handling, air and water quality, and natural resource restoration. I challenge each club to pick one of these areas you haven't had a project for in the past and

create one. Every little thing we do adds up! Let's take care of our Earth for ourselves and future generations!

## EDUCATION

### Deana Pittman, Partnership Chair



GFWC is currently working towards formalizing a partnership with the American Library Association. As it is still in the negotiating process at the time of this writing, final details are not available. Please refer to the online version of the GFWC Club Manual as well as News & Notes and *GFWC Clubwoman Magazine* for future updated information on this partnership as well as possible others.

### Ella D. Cronin, Program Chair



Thirty-one local 2011 GFWC-MFWC clubs in five districts made a significant impact in our state through volunteer services and financial contributions: 546 projects, 974 participating members, 32,279 hours, \$95,179 in-kind contributions, and \$24,880 of direct support. In fact, this was so good the GFWC-MFWC annual report for Education

Collaboration was awarded first place by GFWC in national/international competition. This award was for meeting and exceeding the three GFWC goals and objectives summarized as *Promoting self-worth, self-improvement, and enrichment programs; Acting as change agents in promoting educational opportunities and educational awareness; and Increasing literacy.* These clubwomen are dedicated to promoting a commitment to literacy and lifelong learning that includes:

- Encouraging support of educational opportunities for all ages
- Promoting self-enrichment and personal growth of club members through reading, participating in educational functions, and participating in Epsilon Sigma Omicron structured program endorsed by GFWC
- Educating members and others on ways to improve low adult and youth literacy rates
- Supporting libraries in their efforts to provide information and materials and educational opportunities

Ideas for Education committees to think about for 2012-2014 and guide their volunteer services and financial support are listed from the 2012-2014 Club Manual. Examine influences in your community that affect literacy, dropouts before graduation of high schools and middle schools, special education, English as a second language, and visual and physical conditions that inhibit learning. Educate the club and community on issues of literacy. Support youth through scholarships. Hold a "How to Use the Library" program for club members and targeted community groups. Offer scholarships for higher education and selected college programs. Host events at and in conjunction with your local library, literacy council, and Friends of the Library chapters—sponsor a speaker or author, hold craft sessions, and read-aloud programs for children. Celebrate library card sign-up month. Recruit and train tutors and instructional support for community literacy programs, library educational activities, and in-school learning curriculum and teachers. Start a book club for club members and promote expansion by others in your community. Hold fundraisers and collect items to support local libraries, instruction in State schools for the blind and deaf, and MPB instructional programs. In all of these areas are rich resources for club programs.

At the end of the calendar year Education Committees will prepare written annual reports to document success and number of projects, hours of volunteer service, and in-kind and direct financial contributions. The narrative should clearly state *who, how, what, when, and where.* Writers should review the GFWC and MFWC Reporting Guidelines and recommendations as well as Education Program goals and objectives prior to writing.

## HOME LIFE

### Theresa Buntyn, Partnership Chair



GFWC seeks out like-minded organizations that affect the well-being of individuals, families, and communities. These organizations or partnerships offer specialized services such as: materials, speakers, kits, and multiple sources of information specifically designed to assist clubs to reach out to the area communities. Currently there are four Home Life partnerships listed in the GFWC

2012-2014 manual. GFWC is continually working to identify future partnerships that promote the mission and scope of GFWC organizations. Future partners will be updated at the Home Life Community Services Program Partnership located in News & Notes, *GFWC Clubwoman Magazine*, and online at [www.GFWC.org](http://www.GFWC.org).

To promote our State President's special project, *Honoring Past GIFTS while Celebrating the PRESENT...FREEDOM to VOLUNTEER!*, let us begin **with Canine Companions for Independence (CCI)**. GFWC is working with CCI on its Wounded Veteran's Initiative. CCI has provided many assistance dogs to injured service men and women who are returning from the Iraq and Afghanistan wars. These dogs can provide assistance to a veteran to help regain independence.

The second organization that many of our clubs participate in throughout the year is **Easter Seals**. To again embrace our "Freedom to Volunteer" club members can support Easter Seals by donating \$20 to support services and new subscribers will receive a free year of Guidepost Magazine. Existing subscribers who make a \$20 contribution provide a subscription to a member of the U.S. Military. Also clubs can participate by collecting empty laser and ink jet cartridges for donations to the "Cartridges for Kids Recycling Program."

Our local clubs can again participate with the **National Osteoporosis Foundation (NOF)**. NOF is dedicated to the prevention of osteoporosis and broken bones, the promotion of strong bones for life, and the reduction of human suffering through programs to promote awareness, education, advocacy, and research. Observe National Osteoporosis Awareness during the month of May by providing materials to the community from resource packets. NOF's Pearls of Strength® bracelet has been a reminder that just like pearls, our bones are precious. These beautiful bracelets can be purchased online at [www.nofstore.org](http://www.nofstore.org). All jewelry sales benefit NOF's Generations of Strength Campaign.

GFWC-MFWC latest partnership is **"Inside Knowledge: Get the Facts about Gynecologic Cancer Campaign."** This organization was developed by the Centers for Disease Control and Prevention to support gynecological cancer education passed by the Johanna's Law signed in 2007. Resource information provided includes the five most common types of gynecologic cancer: cervical, ovarian, uterine, vaginal, and vulvar. The newest public service announcement reminds women to "Be Brave, Ask Questions." Always see the doctor with any new symptoms that are unusual and last for two weeks. This year club members have a vast amount of resources to share with our family, friends, and community.

Refer to the following websites for additional information for each of the listed partnerships.

Canine For Companions (CCI) [www.CCI.org](http://www.CCI.org)

Easter Seals [www.EasterSeals.com](http://www.EasterSeals.com)

National Osteoporosis Foundation (NOF) [www.NOF.org](http://www.NOF.org)

Inside Knowledge: Get the Facts about Gynecologic Cancer Campaign [www.cdc.gov/cancer/knowledge](http://www.cdc.gov/cancer/knowledge)

### **Pam Smith, Program Chair**



The Home Life Community Service Program is a program designed to keep members informed of issues that affect the well-being of individuals, families, and communities by providing opportunities and resources to meet and address needs through volunteering. Through the Home Life program, clubs may develop and implement creative projects that promote a

healthy lifestyle; increase awareness, prevention, research, and treatment of disease; target personal development; address the issues of hunger, inadequate housing, and homelessness; and/or prevent or correct financial difficulties.

Program ideas are endless. Projects to consider are ones that address issues such as women's health; infant and child's health; identity theft prevention; supporting service dog programs; people with disabilities; healthy lifestyles; and childcare.

Listed below are ideas on how clubs may support the Home Life Community Service Program:

- Learn the basic facts about gynecologic cancer, including risk factors and screening options.
- Assess and quantify specific needs of local senior citizens.
- Plan programs on women's heart health.
- Organize or participate in health fairs or forums.
- create a resource list of local woman's clinics and health centers and distribute it at shelters, places of worship and libraries.
- Promote healthy self-esteem and self-worth.
- incorporate fitness activities into your club activities, including walking or yoga.
- Organize financial workshops for women, retirees, single parents, and/or college students.
- Promote correct information through the Center for Disease Control at [www.CDC.gov](http://www.CDC.gov).
- Work with local food banks and homeless shelters to provide needed donations, stock shelves, and other volunteer services.
- Partner with a local nursing home or mental health facility to enhance the quality of life for the elderly and disabled.
- Learn about heart health and share this information with others.
- Start an exercise group in your club, then initiate a weight loss challenge in your club and keep track of pounds lost
- Organize clothing drives.
- Partner with a Woman's Crisis Center to support donations of clothing, toiletries and children's toys.

## **INTERNATIONAL OUTREACH**

### **Sue McMurtry, Partnership Chair**



The International Outreach Community Service Program is designed to enable members to become better world citizens through advocacy, education, and action, which will in turn affect change in and for our global friends and their communities.

GFWC-MFWC partners with organizations that operate at the national or international level and offer unique and

customized services such as project materials, speakers, kits, and/or additional information specifically designed for GFWC-MFWC clubs to enhance the effectiveness of the Community Service Programs and Special Projects within their communities. These GFWC partners are aware of GFWC clubs' specific needs and organizational structure.

GFWC-MFWC partners with the following organizations:

CARE [www.CARE.org](http://www.CARE.org)  
[Groups@CARE.org](mailto:Groups@CARE.org)  
 Helen Robinson - 404-589-2654

INMED [www.inmed.org](http://www.inmed.org)  
[mbolado@inmed.org](mailto:mbolado@inmed.org)  
 703-729-4951 ext. 227

OPERATION SMILE [www.OperationSmile.org](http://www.OperationSmile.org)  
[DMorrison@Operationsmile.org](mailto:DMorrison@Operationsmile.org) (Dory Morrison)  
 757-321-7645

HEIFER INTERNATIONAL [www.Heifer.org](http://www.Heifer.org)  
[Pat.Keay@Heifer.org](mailto:Pat.Keay@Heifer.org) (Patricia Keay\_)  
 877-248-6437

SHOT @ LIFE [www.shotatlife.org](http://www.shotatlife.org)  
[MCarter@UNFoundation.org](mailto:MCarter@UNFoundation.org) (Maggie Carter)  
 202-862-8586

UNICEF [www.UNICEFUSA.org](http://www.UNICEFUSA.org)  
[LStone@UNICEFUSA.org](mailto:LStone@UNICEFUSA.org) (Lacey Stone)  
 212-922-2640

You may contact these organizations for more information, kits, materials, and much more.

Some important dates for the remainder of 2012:

August 12	International Youth Day
September 12	International Literacy Day
September 21	International Day of Peace
October 1	International Day of Older Persons
October 16	World Food Day
November 20	Universal Children's Day
December 1	World AIDS day
December 10	Human Rights Day

I appreciate the opportunity to serve as your International Outreach Partnership Chair. Please call on me if I can be of assistance to you or your club in any way, whether it is to provide information or as a program presenter. I may be reached at 601-917-3447 or email- [sue.mcmurtry@yahoo.com](mailto:sue.mcmurtry@yahoo.com).

### **Kathleen Penton, Program Chair**



I am excited about being your International Outreach Chairman. I pray that we as club members will become more aware of the needs of our international neighbors. We need to be more educated about what we can do. The objective of the International Outreach Community Service program is to give your own creative skills to develop programs and projects based on

your club's interest in other countries. We need ways that we can educate other countries on how to be cleaner and healthier.

Over three billion people live on less than \$2.50 a day. Twenty-one thousand children die each day due to poverty. Here are some ideas of ways we can help:

- Help children all over the world by funding life saving vaccines.
- Ensure children have access to health, education equality and protection.
- Provide support and encourage growth and stability by donating gifts such as livestock to families.
- Educate members about United Nations programs for women and children.
- Participate in international cultural exchanges.

These are just a few ideas; there are many more ways to help and support our international friends. I challenge each club to think of projects we can do.

## PUBLIC ISSUES

### **Rhonda Terrell, Partnership Chair**



When you think of a Partnership, what is the first thing that comes to mind? Maybe one of these...a mutual agreement, a relationship where both parties benefit, or good friends working together. Partnerships that have been approved by GFWC actually are all of these things! In Public Issues, there are three approved Partnerships:

- Kettering Foundation
- Sew Much Comfort
- United Service Organizations (USO)

The Kettering Foundation is working on an issue booklet with GFWC entitled ***Bridging and Bonding: How Can We Create Engaged Communities in a Time of Rapid Change?*** This booklet is anticipated to be completed in the summer of 2012 and updates will be provided as the issue booklet is finalized. In the meantime, check out their website at [www.Kettering.org](http://www.Kettering.org).

Sew Much Comfort is a wonderful organization and currently the ONLY organization providing adaptive clothing at no cost to our wounded service members. Most troops wounded in combat are surviving their injuries. They fought our battles and as they recover in military hospitals they have nothing to wear but a hospital gown. Their website [www.sewmuchcomfort.org](http://www.sewmuchcomfort.org) provides information on monetary donations as well as clothing you can purchase and send to them. They also have a brochure that can be printed out for your club members and will make a wonderful handout for a club meeting. And, if you are a seamstress, you can volunteer to assist with sewing for the adaptive clothing.

The USO has several different opportunities to assist with and you can utilize their website [www.uso.org](http://www.uso.org) to figure out which one will work for your club.

- Through Reading's Military Program allows deployed parents to be videotaped reading a book to their child. You can support this program with monetary donations or by hosting a book drive. Just \$10 gives a child a bedtime story from a deployed parent.
- Operation Phone Home provides phone cards to service members. This project is also supported by monetary donations. For \$25, 70 soldiers can call home using a satellite service.
- USO2GO delivers the USO's most popular services to troops in remote and restricted areas. Everything from bean bag chairs, snacks, toiletries, DVDs, laptops, musical instruments, footballs, electronic video games, and art supplies are bundled into kits (some weighing one ton each) and shipped out. You can support this project by raising money to support the kits. Kits range from \$5,000 to \$25,000 depending on what is sent and the size of the operating base it is being sent to.
- Sesame Street/USO Experience allows all your favorite Sesame Street characters to deliver live performances to military children. This tour was launched in April and will deliver 147 shows on 59 bases in the Pacific and Europe. You can support this program with monetary donations.
- USO Warrior and Family Centers offer a comprehensive array of specialized services and programs to meet the needs of recovering troops and their families in a home-like setting. A huge capital fundraising campaign to raise \$100 million is currently underway.

USO Centers number 160 locations around the world. Mississippi has one located on the Gulf Coast. Clubs can host service projects or events to support the many programs at USO centers.

A good bit of information plus a lot of opportunities for your club equals success in Public Issues Partnerships, in our President's Special Project, and in the hearts of Veterans. Let us never forget all that has been done for each of us as we walk in freedom.

### **Melba Watkins, Program Chair**



It is my pleasure to serve as MFWC President Suzanne Poynor's Chairman of Public Issues for the 2012-2014 administration.

The Public Issues Community Service Program is designed to help club members become actively involved in civic matters. The focus of the program is divided into four major areas: Citizenship, Veterans Affairs, Emergency Preparedness, and Safety.

President Poynor provided helpful printed guides at the Post Convention Luncheon that will offer ideas for programs and projects during her term. This information has also been added to our MFWC website and there are endless resources on the internet ([www.GFWC.org](http://www.GFWC.org) has great information) which address interesting and creative projects in the area of Public Issues.

Our country prides itself on the dedication of our citizens to protect our freedom. Not just freedom from fear and oppression but also the freedom to make simple choices in our everyday lives, to become leaders, and to actively support our neighborhoods and communities. It is our responsibility as American citizens to be productive and prepared for emergencies and to aid our elected officials, our law enforcement agencies, and our first responders in maintaining safe communities. Our government and our military have given us the democratic freedoms that we so enjoy today. It is time for all of us to pull out our red, white, and blue and our stars and stripes and become more involved in our communities. It is our job and our privilege to voice our opinions and to help make responsible decisions for ourselves and our communities. Join me in becoming a "doer" not a "complainer."

**PUBLIC ISSUES ARE OUR ISSUES...WE ARE THE PUBLIC!**

### **GFWC Signature Project: Domestic Violence Awareness and Prevention Lynda Love, Chair**



All MFWC members are encouraged to join GFWC members with one voice in supporting the GFWC Signature Project: Domestic Violence. Most importantly, work with the domestic violence shelters in your local communities to provide needed support. Project ideas include placing shelter wish lists in local beauty salons, distributing Teen Violence Quick Facts Lists at local high schools, and establishing Pinwheel Gardens to raise awareness for child abuse and neglect. You may also host a House Party Weekend to raise funds for GFWC's partner Prevent Child Abuse America and be a part of its mission to ensure the healthy development of children nationwide. Volunteer service projects might include collecting and donating women's shoes, toiletries, make up, pajamas, etc. The list is endless; members are encouraged to log onto the GFWC website for more specific ideas for involvement in the "Step Away From Abuse," "Step Up the Comfort," and "Step to the Future" projects.

Remember that October is Domestic Violence Awareness Month; pin a purple ribbon on members and family as well as wear one yourself throughout the month. This administration, GFWC will present Success for Survivors Scholarships with

eight \$1,000 scholarships awarded annually in June to survivors to help them take the next step in "Stepping Away from Abuse." Please consider making a donation to this fund to help them pursue their education and career dreams.

***GFWC Juniors' Special Project:  
Advocates for Children  
Debbie Hamilton, Chair***



The GFWC Juniors' Special Project: Advocates for Children is designed to enable all GFWC clubs to educate, advocate, and engage in projects concerning the well-being of children through health, social, and safety programs. Advocates for Children encourages all clubwomen to become active advocates for children by working to ensure children are protected from harmful situations, encouraging healthy physical and emotional lifestyles for children, increase GFWC members' awareness of important issues concerning children, and impacting policy to improve children's lives.

Program ideas are endless. Consider projects that address issues such as bullying, children with cancer, child passenger safety, children with disabilities, healthy lifestyles, increased self-respect, foster care, and emergency medical services for children. These are just a few suggestions. Look around your own community and see where the need may be.

Be sure to plan something special for GFWC's Advocates for Children Week- Sunday, October 21-Saturday, October 27, 2012; and use the list of GFWC Partnerships to plan activities. Your own community will provide a wealth of ideas, also. Be creative but remember to REPORT!

**GFWC ADVANCEMENT**

***Communications  
Cindy Holcomb, Chair***



Your club is a dynamic, powerful force in your community. You work to affect change every day. While recognition is not something you expect for the work you do, it serves an important purpose getting the word out. You're not looking for a thank-you, you're looking for partners to help make your community a better place. And how will like-minded women know how to join your club if they don't know it exists?

Publicizing your club's projects and initiatives lets your community know you exist and that you're doing important things. It attracts new members and open doors to worthwhile partnerships. It also assists GFWC with promoting the Federation on a national level.

Name and brand recognition is the ultimate goal of our clubs. MFWC clubs actively participate in projects that communicate and identify their membership in their local clubs, MFWC, and GFWC.

Before reporting read the new guidelines and suggestions from GFWC. A good report will provide a great way to show your hard work. READ, IMPLEMENT, and REPORT.

GFWC provides Awards Programs for Newsletters, Websites, and Media Campaigns. Award and contest winners are recognized during the GFWC Annual Convention. A \$50 award will be given to one club in the nation for creativity in implementing an effective Communications and Public Relations Advancement Area. Refer to the Reporting section of the GFWC Manual for complete award and contest guidelines.

***GFWC Clubwoman Magazine  
Glenda Tarver, Chair***

Please see the MFWC Handbook or go online at [www.GFWC.org](http://www.GFWC.org) for information and a subscription form for the *GFWC Clubwoman Magazine*. Members, don't miss out on this excellent source of the latest club news, program updates, valuable resources, and helpful tips. Remember to report your subscriptions and use of the magazine in the appropriate Advancement area. Clubs with 100% of membership subscribing to *GFWC Clubwoman Magazine* will receive a special reduced rate as well as a Certificate of Recognition at State Convention.

***Fundraising  
Patricia (Pat) B. Lee, Chair***



As the scepter is passed and a new administration is placed to lead the wonderful work that each volunteer and club performs, tried and true, as well as new ideas are needed to raise funds for projects that will help strengthen our communities. Some tips to having a creative program include looking at each club member and appointing an energetic and organized chairperson who knows how to set goals and likes to delegate but is able to monitor progress at the same time. Individuals who are well known with large groups of contacts are your perfect choices. The chairperson, along with the club president and treasurer, will determine the funds needed to meet your club's goals. Letting the community know who you are will also help them know who they are supporting. Joining in with other events, setting up booths, pitching in to help other clubs, etc. will make some activities easier. Appoint club members to serve as committee members. Everyone wants to be needed! Use your member's special skills, such as accountants, to keep track of funds and writers to draft letters. The club member that never meets a stranger is the perfect person to ask for donations or organize a project. At the meeting, have a vision and an agenda, and don't leave without a date and time for the next meeting. Give each member an assignment so that everyone has a fork in the pie! Whether it's an event, items are sold, or you are doing direct soliciting, stewardship is of utmost importance so that the community can see that their donations are being used wisely. Don't forget to let the community know the successful results of your efforts! If you are having trouble choosing a plan, GFWC has endorsed several fundraisers that can be found at [www.GFWC.org](http://www.GFWC.org). Don't forget to celebrate your clubs' efforts; even small projects make a big difference to each and every life that we touch! Just as important as the project itself is the reporting of the project. Don't forget to record hours and monies spent to complete the project. Celebrate the small things!

***Leadership  
Jo Anne Reid, Chair***



Our new **GFWC Leadership Playbook** is outstanding and has these words, "Bottom-up or top-down, leadership involves taking risks, being innovative, and promoting new directions. While some may talk about being born leaders, most of us can learn how to be a strong leader." The USA Olympic trials have just been held, and our USA team selected to go to London.

These athletes, in a wide range of sports, will be looking to their leaders for many things. This could be a long list, but three things come to mind: (1) **Inspiration**: they want their leaders

to inspire them to achieve. This could be through leading by example or by motivating them to do better. Here's something for you to think about. How do you and other members of your club inspire and motivate? (2) **Dedication**: to see their commitment to the sport, the team, the event and the end goal of competing to win. Also these leaders will take responsibility to make things happen. A question to ask yourself: How prepared are you to take responsibility to achieve and improve results? (3) **Courage**: to take up a challenge, to be willing to take risks to improve performance, to make hard decisions, and to lead from the front. Leadership involves setting direction, aligning people, motivating and inspiring others. I encourage each of you to make a trip down memory lane and ask yourself the following three questions: (1) Who have been the leaders in your past who have inspired you and were outstanding in your eyes? (2) What did they do to be outstanding? (3) How could you possibly emulate their thinking, skills, knowledge and behaviors? Your first job as Leadership Chairman will be to read the **GFWC Leadership Playbook**, available at [www.GFWC.org/ClubManual](http://www.GFWC.org/ClubManual) to assist you with the most frequently requested tools and information. I guarantee you will find it helpful! The complete/expanded **GFWC Leadership Advancement Guide** will be available at the same site soon. GFWC will give a **\$50 award** to one club in the nation for creativity in implementing an effective Leadership Program. This chairman cannot enter your club plan unless you implement it, then report it! Wouldn't it be great if it was awarded to a MS club? More on this later.

- Tips and techniques for pursuing leadership opportunities I challenge EVERY club to send a candidate to MS LEADS this year.

**Legislation and Public Policy**  
**Elizabeth Massey, Chair**

The objective of the Legislation and Public Policy Program is to involve GFWC members in grassroots advocacy for GFWC Resolutions and priority issues. I encourage you to check your GFWC Manual under the Legislation and Public Policy Program section to find many ideas to better inform the general membership on GFWC's Public Policy stand. Resources for materials and/or information are also found in this section.



Congratulations to Quitman Woman's Club on winning first place in our state reporting Legislation and Public Policy. Most notably, they held a program on "Public Policy; Governing by Principle." A speaker from the Mississippi Center for Public Policy familiarized members with the work of the non-profit organization and the purposes and activities which it fulfills. The group works with public officials, candidates for public office, individuals, and groups who play a part in affecting public policy. The principles emphasized by the group centered around the government's existence to protect rights while considering long term and cumulative consequences more carefully than short term benefits and that individuals are ultimately responsible for governing themselves as well as for the consequences of their decisions.

Club members are encouraged to gain knowledge and understanding of issues and policies through communicating with legislators and other government officials regarding state funding and future legislation. Write your legislators about issues surrounding education, health reform, and the Mississippi Public Broadcasting organizations. Appoint an interested and informed club member as your club's Public Policy Chairman. Continue to educate your club by becoming familiar with the public policies of GFWC by reviewing the current GFWC Resolutions. Invite an elected official to discuss the importance of constituent involvement. Check the GFWC club manual for other resources and websites that can provide valuable information.

**Membership**  
**Darlene Adams, President-elect**

**Membership – "The Sole of the Federation"**

Socrates said, "When our feet hurt, we hurt all over." That can be said for our organization. The right type of shoes is so important for our wellbeing. Membership is the shoe of our organization. It stabilizes our clubs. As we all know – membership matters! If membership is lacking, it hurts our organization. So if it matters, what are we going to do about it?

**GFWC's Seasons of Recruitment are:**

**Summer: "Kick Up Your Heels" – June, July, August**  
**Fall: "Lace Up Your Shoes" – September, October, November**  
**Winter: "Dig Out Your Boots" – December, January, February**  
**Spring: "Pump Up Your Members" – March, April, May**

I urge each club to **recruit all year**. Consider amending your bylaws if your club enrollment is only once a year. Don't let your Yearbook plan limit you from adding new members to programs and projects. If you don't want to reissue books due to copy costs, just handwrite the names in. I'm sure your

**MS LEADS**  
**Susan Shurden, Chair**



Has this ever happened to you:  
You are called upon in a meeting to give a report that you were unprepared for and your face went WHITE?  
You left a meeting totally BLUE in the face from holding your breath because you were afraid to speak up?  
The same conflict keeps cropping up over and over and has you seeing RED?

Attending the Malone Sisk Leadership Education and Development Seminar will give you the tools to avoid such a colorful response to preparation, public speaking, and conflict management. Make certain that your club has a representative this year!

Candidates must hold the following qualifications:

- Demonstrate leadership capabilities at the club level as an active club president, club officer, or club project/committee chairman
- Exhibit a commitment to the Federation
- Exhibit an understanding of the GFWC mission of community service, illustrated by programs/projects in which she is/has been involved
- Demonstrate leadership skills, including but not limited to organization, responsibility, trustworthiness, enthusiasm, flexibility
- Exhibit an interest and willingness to pursue higher leadership positions in the Federation
- Understand and accept potential expenses involved in participation
- Not have held an elected position at or beyond the state level

Your club's candidate will receive:

- Presentations on conflict resolution, mediation, public speaking, time management, parliamentary procedure
- Explanation of GFWC resources, materials, and assistance
- Discussions on GFWC policies, procedures, and parliamentary law

upcoming program and projects could use extra help. Here are some things your club should try:

#### RETENTION

- Encourage Flexibility in Your Club. A common reason a member leaves a club is lack of time. Find ways to streamline meetings (send minutes and treasurer's reports before meeting date for review; stick to agenda; set time limit on discussions; schedule meeting times that accommodate as many members as possible; review membership obligations to determine if they are too stringent for today's busy woman).
- Have Some Fun. Allow time either before or after a meeting to fellowship. Throughout the year, have "girl dates" where you go out to eat, visit a play, go shopping, visit our club headquarters, etc. This is the perfect time to build relationships and get to really know your members. It may surprise you that the club member who seems "all business" may be the biggest joker, keeping you in stitches.
- Conduct a GFWC Refresher/Orientation. Members are more likely to get involved when they are more knowledgeable about their organization. Explain how your local club is part of MFWC and GFWC. Address why we report, the GFWC's signature project, and our President's Special Project, to name a few.
- Mentor New Members. Assign a "seasoned" member to mentor a new member for one year, staying in touch and monitoring the new member's comfort level and involvement.
- Recognize and Reward Members. We all like to know we are appreciated. Members are more likely to remain in clubs that appreciate their talents. There are many ways for a club to show their appreciation: year pins, service awards and member of the month are just a few of the many ways to recognize members. Whatever you do, use some form of publicity to show your members the club is very proud of their service.

#### RECRUITMENT

- Plan a Recruitment Event. Invite neighbors, friends, co-workers or advertise in your local paper. At your event, display pictures or have a slide show presentation of all the fun things your MFWC club is doing as well as the impact it is making on the community. **CONTEST:** Any club holding a recruitment event will be eligible to be included in a drawing at each District Convention for a gift I am personally providing (if there are no entries for a district, there will be no drawing at that convention). How to enter? All clubs must email or hardcopy mail me a summary of your club's recruitment event with support document. This Recruitment Event is NOT a membership orientation, but an event to solicit new members.
- Identify a Core Group of Members for a New Club. Invite people already volunteering in your community, such as in hospitals, schools, nursing homes, recreation facilities, church, etc. These people already have a desire to serve and would make great members. Start a Juniors Club in your local junior and senior high schools. Are there larger businesses where you can start a local club at the workplace? Start a collegiate club in the junior colleges and universities. Check into local clubs that are not under the umbrella of a state or national organization and see if they would consider joining under GFWC/MFWC (garden clubs, local civic groups, etc.).
- Cyber Clubs. For the extremely busy professional women or stay-at-home moms, consider starting a cyber club. Rather than face-to-face monthly meetings, they would conduct business through email, Facebook, Twitter, podcast, club blog or other social media technology. Your traditional club can consider having "cyber members" as a way to attain new members that have a heart to serve their

community, but their schedules prohibit them from attending in person.

GFWC has available grants for clubs and districts. Please visit the GFWC website for details. MFWC's Membership Contest is: **"Making a Difference – One Member at a Time."** For every member "net increase," your club gets \$10. Contest is 7/1/12 – 12/31/12. See MS Handbook or visit the MFWC website for more details.

### **Women's History and Resource Center Dorothy Thomas, Chair**



Usually referred to as GFWC WHRC or WHRC, the Center has its roots in the early recognition by GFWC of clubs for their collection and management of information on the work of its clubwomen volunteers and for providing information and publications to member clubs and federations. In furtherance of this tradition, the Center was established in Washington, D.C. in 1984. One of WHRC's primary goals is to make its historical records more accessible to clubwomen, the scholarly research community, and the general public. To further that objective, GFWC provides a WHRC online catalog and a guide for its use.

WHRC's collections contain more than 45,000 artifacts. The WHRC section of the GFWC Club Manual can be accessed at [GFWC.org/WHRC](http://GFWC.org/WHRC) or the center may be emailed at [WHRC@GFWC.org](mailto:WHRC@GFWC.org).

**HOW CAN WHRC HELP ME AND MY CLUB?** It can help you develop programs using GFWC history to promote interest and membership. WHRC can provide assistance in preserving historic club houses. It can provide professional liaison for clubs that want to work with a state and/or local historical agency to preserve their records and/or buildings. The Center publishes information, including WHRC News, a bi-monthly newsletter for *Friends of WHRC* to assist clubs in historic preservation. GFWC offers, to its members, free tours highlighting exhibits at GFWC Headquarters in Washington, D.C., which is a National Historic Landmark.

**HOW CAN MY CLUB SUPPORT THE WORK OF THE WHRC?** Join the *Friends of WHRC*. A copy of the form is in the WHRC section of the GFWC Club Manual. Promote WHRC services to local colleges, universities, and historical institutions. Appoint a club WHRC chairperson and report your program activities.

**IDEAS FOR CLUB PROJECTS.** Contact the WHRC for tips for using WHRC publications and electronic resources for club program ideas. Offer your local news media GFWC history stories for Women's History Month (March), Federation Day (April 24) and Archives Month (October). Partner with local historical institutions to promote the role of your club in local history.

### **GFWC Awards, Contests, and Grants**

#### **Community Improvement Program Award Willie Grace Myatt, Chair**



The GFWC Community Improvement Program Award is the heart and soul of GFWC. Since the 1950s, this program has provided clubs with a platform of developing and implementing projects that meet the varying and changing needs of their communities. Club projects that help make your cities and towns better places to live are "community improvement" projects and are eligible for national recognition and award.



Every club in our state has one or more notable community improvement projects. Begin now to plan for your entry and let your club shine. Information related to ideas, project essentials, rules, and judging criteria can be found in the Awards, Contests, and Grants section of the GFWC Club Manual and the MFWC Handbook, as well as online at [www.GFWC.org](http://www.GFWC.org) and [www.gfwc-mfwc.org](http://www.gfwc-mfwc.org).

Monetary awards are available each year to the top three reports in each state (\$50, \$35, and \$25). National monetary award presentations are granted to the top five states (\$5,000, \$3,500, \$2,500, \$1,500, and \$500), as well as International Affiliate (\$500), and Juniorette (\$250).

Projects must be accomplished during the period January 1, 2012-December 31, 2013. Club entries must be sent directly to me, postmarked no later than March 1, 2014.

**Jennie Award  
Carolyn C. Huey, Chair**



What is the Jennie Award? The GFWC Jennie Award honors one clubwoman from each of the eight GFWC regions for outstanding commitment to club, community, and family. They are chosen by their clubs to compete at state and regional levels, with one from each region to be honored at the 2014 annual International Convention in Phoenix, Arizona. This is the only national honor that recognizes individual members for personal excellence. The award is named in honor of Jane Cunningham Croly, founder of GFWC. This is an occasion to highlight extraordinary clubwomen who epitomize the spirit of independence, courage, and persistence in purpose through their roles as volunteers within their clubs, elsewhere in the community, and as members of a family or extended family.

Since this is an award for lifetime personal excellence, club presidents should consider utilizing the knowledge of club historians for Jennie Award nominees. Club presidents should be mindful of first impressions and make the nominee's packet of supporting materials as professional as possible because it may be judged at the different levels by influential community leaders.

Award rules are as follows:

- Clubs may nominate one member who has demonstrated the qualities outlined under the judging criteria for this award.
- Nominee must be a member in good standing of a GFWC club for a minimum of five years. Her tenure of service may be with several clubs. Years of service must be consecutive not concurrent.
- Current and past members of the GFWC Executive Committee are ineligible.
- Nominations should emphasize a member's entire lifetime of service.
- Clubs must complete and submit the official GFWC Jennie Award Nomination Form along with a maximum 500-word written narrative. Narratives should include descriptions of the nominee's:
  - Club activities
  - Participation in community groups and organizations, both volunteer and professional
  - Commitment to her nuclear or extended family
- Clubs must submit the following supportive materials along with nomination form and narrative:
  - Photograph of nominee (no larger than 5x7 inches)
  - Clips of two-three newspaper (or other media) stories about successful projects to which the member contributed (it is not necessary for such articles to mention the member by name).

- Letter of endorsement from club president
- Letter of endorsement from a representative of another organization

- Nomination forms and supporting materials, including photographs, will not be returned.

Club nominations shall be submitted to GFWC-MFWC President Suzanne Poynor, postmarked by June 1, 2013, for state-level judging. Please adhere carefully to all guidelines when filling out applications. For more details and information, as well as the Jennie Award nomination form, please go to the 2012-2014 Club Manual or visit [www.GFWC.org/Clubmanual](http://www.GFWC.org/Clubmanual).

**Media Campaign Contests  
Frances Brown, Chair**



GFWC-MFWC is calling all clubwomen to take action and earn money as well as recognition for your club. You already work hard to get the word out to everyone whether you are recruiting new members, advocating for a cause, having a fundraiser, or promoting a special event. So why not enter the contest and get the recognition you deserve? Media campaign recognizes

outstanding public relations accomplishments through the use of traditional methods as well as new social media such as YouTube video, websites, Facebook page, Twitter etc. GFWC encourages members to submit a campaign in one or more of the following categories: Advocacy, Fundraising, Member Recruitment, and Special Events. A \$50 award is given annually at GFWC Convention in recognition of implementing an outstanding and effective media campaign.

For judging criteria and contest rules visit [www.GFWC.org](http://www.GFWC.org), click on GFWC Manual and then Media Campaign Contest. I am excited about serving you as Media Campaign Contest Chair. I am available to assist any way I can.

You may call me at 662-414-1048, email me at [frannabrown@hotmail.com](mailto:frannabrown@hotmail.com), or message me on Facebook.

**Club Newsletter Contest  
Pat Gandy, Chair**



Club newsletters are one of the most effective and efficient methods of informing your members about current, ongoing, and new initiatives. Newsletters need not be elaborate or lengthy. Substance is more important than style. A newsletter should be informative and generate enthusiasm while contributing to public relations outreach, membership recruitment and retention, and program development. The GFWC Newsletter Contest encourages clubs and State Federations to establish a strong newsletter program aimed at increasing awareness about ongoing projects, programs, events, and issues that affect GFWC members and communities.

Entries will be judged and awarded points on content quality, including timeliness, clarity, and member impact, as well as presentation, design, and adherence to rules.

Contest rules include:

- \* Only one newsletter issue per club or State Federation may be submitted.
- \* Newsletter must have been printed and clearly dated during the contest year.
- \* The front page of the newsletter must prominently display the official GFWC emblem and mention membership in GFWC. Refer to the *GFWC Stylebook* for GFWC Trademark Use Policies at [www.GFWC.org](http://www.GFWC.org).

\* Entries must include the contact information of at least one member, defined as an email address, telephone number, and/or mailing address.

\* All entries must be printed and sent via postal mail, postmarked no later than March 15 in the year in which they will be judged to: GFWC Newsletter Contest, 1734 N Street NW, Washington, DC 20036-2990. The envelope must be clearly marked **GFWC Newsletter Contest**.

Enclose a cover letter that includes club or State Federation president's name and contact information, name and contact information of individual submitting the entry, number of members in the club/State Federation, and approximate circulation. Include an essay (250 words or less) describing the club/State Federation's approach to utilizing its newsletter.

Clubs and State Federations with electronic newsletters must follow the same entry rules. Printed copies of electronic newsletters are required.

### **Photography Contests** **Carolyn Long, Chair**



There are three separate contests in which to enter your photographs: The World in Pictures, GFWC Volunteers in Action, and A Year in Pictures. Some of the general rules for all of the contests are: 1) 8x10 print -no electronic submissions, 2) mounted on 8x10 RIGID MOUNT BOARD 3/8 inch or less 3) signed waiver for each print, 4) label affixed to back, and 5) NO MATTES, FRAMES, OR HANGERS.

Each contest has specific rules also. Be sure to READ and FOLLOW the specific and general rules for your entry or entries.

The World in Pictures has two classes: color and black and white. The new addition in this category is the high school student division. This photo must be sponsored by a GFWC club. This category includes living things, scenes, and still life.

GFWC Volunteers in Action may be black and white or color. First place photographs in each category, class, and division will be printed in the September-October issue of the *GFWC Clubwoman Magazine*.

A Year in Pictures photographs MUST be horizontal/landscape and in color. Each CLUB may submit ONE photograph DIRECTLY to GFWC Headquarters by May 15. The twelve winning photos will appear in the GFWC A Year in Pictures calendar, and the September-October issue of the *GFWC Clubwoman Magazine*.

In the past there has been some confusion and inconsistency, therefore, making the judging process more difficult. PLEASE read all rules carefully as district and state judging will follow them exactly as written. Each district person in charge of the photography section will have a copy of the rules for the judges to read. There are several changes this year so check out the requirements before submitting your entry.

Clubwomen get busy using your film or digital cameras capturing those unforgettable moments including those at club meetings and functions. Let's get behind the high school student division of The World in Pictures.

Visit [www.GFWC.org/ClubManual](http://www.GFWC.org/ClubManual) for updates and more information.

### **\*\*\*\*\*NEW GFWC TAGLINE CONTEST\*\*\*\*\***

GFWC-MFWC members have an opportunity to help develop a new GFWC slogan/tagline! You can be a part of defining who we are and what we are about! Members are invited to submit entries and vote on your favorites. Details and entry form can be found at [www.GFWC.org/gfwc/contests](http://www.GFWC.org/gfwc/contests). The deadline for this contest is November 15, 2012.

### **Website Contest** **Chris Pasquale, Chair**



I am so excited to be the Website Contest Chair for MFWC during the 2012-2014 administration. It will be so much fun to see what each club will accomplish this year as they seek new ways to reach out to potential members, current members, and their communities. I would like to share just a few of the guidelines for the contest to

get you started. The complete official guidelines of the GFWC can be found on their website.

All Mississippi clubs are encouraged to have a website that allows easy access to all club information regarding monthly activities and community projects. Judges will be looking for the following from each website: quality of content, timeliness, clarity, and writing style, along with presentation, design, and ease of use. Please be sure to follow ALL of the GFWC guidelines in order to be eligible for judging. A few of the "must have" criteria are: MUST have GFWC in the URL, MUST have link to [www.GFWC.org](http://www.GFWC.org), MUST have contact information for at least one club member, and MUST use the proper "GFWC" emblem.

Entries must be made by email to [PR@GFWC.org](mailto:PR@GFWC.org) and time stamped no later than 11:59 CST on March 15<sup>th</sup> in the year that the website will be judged. Each club should also email a copy to me at [squaliecc@hotmail.com](mailto:squaliecc@hotmail.com). Certificates will be issued to each participating club.

Please don't be intimidated by technology. Use it to enhance your club's outreach and just have fun with it. This is your time to shine. I'm looking forward to seeing your creativity expressed in cyberspace.

Please don't forget to check out the complete rules and guidelines on the GFWC website and feel free to contact me with any questions or suggestions.

### **GFWC Writing Contests** **Anne B. McKee, Chair**



**BREAKING NEWS** – Mississippi Federated Women's Clubs are celebrating a **NATIONAL WINNER!** Yes, fifth-grader, Christen Tindall, captured First Place, Youth Poetry Division, Category 2 (grades 3, 4, & 5). Her poem entitled "Time and Time Again" was sponsored by the GFWC-MFWC Fine Arts Club of Bruce. Christen is a student

at Calhoun Academy, Bruce. I extend hardy congratulations to Christen and the GFWC-MFWC Fine Arts Club of Bruce. Creative art, through the categories of poetry and short story, for both member and youth categories is available to each club as sponsored by the GFWC Writing Contest – an opportunity of great value. I hope that you will consider the significance of your club promoting the common core values of reading and writing, especially through the Youth Poetry and Youth Short Story categories. Of course, member stories and poems are most needed through this competition as well. Please take time to review the GFWC Writing Contests guidelines: [www.GFWC.org](http://www.GFWC.org). The deadline is February 1, 2013, and the entries are mailed to me: Anne B. McKee, 5891 Windsor Circle, Meridian, MS 39305. All entries must have been written during the 2012 year and a signed Creative Arts Waiver must accompany each entry. It's time to create those poems and short stories. As Mississippians, we are all about storytelling and the creatively written arts. It's part of our heritage. Call me for more information: (H) 601-681-8525.



# Mississippi Federation of Women's Clubs, Inc.



## GF WC-MF WC Dues Form 2012-2014 Membership Year 2012 2013

### Club Information:

Club Name: \_\_\_\_\_ District: \_\_\_\_\_  
 Club President: \_\_\_\_\_ Phone Number: \_\_\_\_\_  
 Address: \_\_\_\_\_  
 Club Treasurer: \_\_\_\_\_ Phone Number: \_\_\_\_\_  
 Address: \_\_\_\_\_

**Club Dues:** \$25.00 times number of general members \_\_\_\_\_ listed on roster \$ \_\_\_\_\_  
 \$20.00 times number of juniorettes \_\_\_\_\_ listed on roster \$ \_\_\_\_\_  
 (General and Juniorette members will receive the Mississippi Clubwoman magazine)  
 Magazine Subscription for Associate or Honorary Members \_\_\_\_\_ @\$3.00 each \$ \_\_\_\_\_

### Contributions:

- ♦ MF WC President's Special Project – "Freedom To Volunteer" \$ \_\_\_\_\_
- ♦ 1935 Society (Upkeep of MF WC State Headquarters) \$ \_\_\_\_\_
- ♦ Hebron Memorial Scholarship Fund (\$1,000.00 annual scholarship) \$ \_\_\_\_\_
- ♦ Sara Peugh Butterfly Scholarship Fund (\$1,000 annual scholarship for Juniorette) \$ \_\_\_\_\_
- ♦ Challenge Grant (For Special Education Teacher) \$ \_\_\_\_\_
- ♦ State Institutions Fund (3 Institutions) or separately below  
 Deaf School \$ \_\_\_\_\_ Blind School \$ \_\_\_\_\_ State Hospital \$ \_\_\_\_\_
- ♦ Mississippi Public Broadcasting \$ \_\_\_\_\_
- ♦ Youth Art: \$5.00 per club (or 10¢ per member if over 50 members) \$ \_\_\_\_\_
- ♦ HOBY: \$175.00 per student or other contribution (\$20.00 minimum donation) \$ \_\_\_\_\_  
 Name of school sponsored by your club: \_\_\_\_\_
- ♦ Malone-Sisk (MS LEADS) Program \$ \_\_\_\_\_
- ♦ Other Contributions Not Listed Above: List Name and Amount of each in space below or attach a separate page if more space is needed.  
 \_\_\_\_\_ \$ \_\_\_\_\_  
 \_\_\_\_\_ \$ \_\_\_\_\_  
 \_\_\_\_\_ \$ \_\_\_\_\_

**Total Of All Above** \$ \_\_\_\_\_  
 Check: # \_\_\_\_\_

### Notes:

- ♦ **New Members:** (added during club year): Send name, address, and dues to Diane Rouse, MF WC Treasurer.
- ♦ **Deletions:** Send deletions to Circulation Editor Lisa A. Harris at 822 SCR 115 South, Raleigh, MS 39153 or laharris@hughes.net.
- ♦ **Due Date: Postmarked November 1<sup>st</sup>** (Honor Club certificate given at State Convention). Club dues **NOT PAID** by January 1<sup>st</sup> will **not have reports judged** and will not be eligible for awards given at conventions.
- ♦ **Mail Payment: Make check payable to MF WC and enclose two copies of your roster with names and addresses in alphabetical order. Please identify new members on your roster.** Mail to Diane Rouse, GF WC-MF WC Treasurer, 2323 Tiffany Circle, Florence, MS 39073.

*The Mississippi Federation of Women's Clubs, a member of the General Federation of Women's Clubs, is an organization of women whose goal is personal enrichment leading to volunteer service that benefits the community, state, nation and world.*

# 2012-2014 DIRECTORY

## *- Important Notice -*

*This directory has been carefully compiled from information submitted. Please notify the Editor of any errors so that corrections can be made. The listings of officers, club presidents, and chairs shall be for the use of the Federation and may not be loaned or given to any individual or organization without the consent of the MFWC Executive Board.*

## **GFWC Officers**

### **President**

Mary Ellen Laister  
1734 N Street NW  
Washington, DC 20036  
MLaister@GFWC.org

### **President-elect**

Babs Condon

### **First Vice President**

Shelia Shea

### **Second Vice President**

Mary Ellen Brock

### **Recording Secretary**

Marian St. Clair

### **Treasurer**

Debra Stranhanoski

### **Director of Junior Clubs**

Becky Weber

## **Southern Region Officers**

### **President**

Ann James  
115 Patterson Drive  
Auburndale, FL 33823-2323  
AnnWJames@aol.com

### **Vice President**

Jackie Boland

### **Secretary**

Jo Anne Reid

### **Treasurer**

Kay Chadwick

### **Parliamentarian**

Judy Lutz

## **GFWC-MFWC Officers**

### **Elected & Appointed**

### **President**

Suzanne Poynor  
225 Briarhill Cove  
Florence, MS 39073  
601-845-7014 – h  
601-668-9627 – c  
suzpoynor@aol.com

### **President-elect**

Darlene Adams  
3004 Woods Road  
Picayune, MS 39466  
601-799-0157 – h  
601-590-0251 – c  
darleneadams@bellsouth.net

### **Vice President**

Sue Addy  
211 Long Street  
Union, MS 39365  
601-774-5345 – h  
601-416-3195 – c  
addyIs@att.net

### **Recording Secretary**

Abby May  
224 CR 137  
Okolona, MS 38860  
662-542-0587 – c  
abbymay002@yahoo.com

### **Treasurer**

Diane Rouse  
2323 Tiffany Circle  
Florence, MS 39073  
601-845-3059 – h  
601-454-5350 – c  
crouse99@yahoo.com

### **Corresponding Secretary**

Sherrri Reid  
542 Leeville Road  
Petal, MS 39465  
601-270-4464 – c  
reidshe@comcast.net

### **Parliamentarian**

Tammie McCoy  
177 West Oxford Street  
Pontotoc, MS 38863  
662-489-5894 – h  
662-790-4134 – c  
mcco3938@bellsouth.net

### **Historian**

Misty Wright  
115 Holly Cove  
Batesville, MS 38606  
662-291-5034 – h  
misty\_merie@yahoo.com

### **Chaplain**

Sheila "Tinker" Forrester  
5257 MS Highway 15  
Ackerman, MS 39735  
662-285-3284 – h  
662-312-1532 – c  
tinksdaisies@aol.com

### **Mississippi Clubwoman Editor**

June Vaughn  
89 CR 257  
Bruce, MS 38915  
662-983-4019 – h  
662-983-8399 – c  
junevaughn@brucetelephone.com

### **Assistant**

Jeanette Thrash  
P. O. Box 906  
Decatur, MS 39327  
601-635-2699 – h  
601-479-3101 – c  
jbthrash39@gmail.com

### **Mississippi Clubwoman Circulation Editor/ Website Chair/Handbook Editor/ Newsletter Editor**

Lisa A. Harris  
822 SCR 115 South  
Raleigh, MS 39153  
601-940-1519 – c  
laharris@hughes.net

### **Juniorette Director**

Mandy Mullins Laiche  
177 Monroe Road, SE  
Meadville, MS 39653  
601-833-6661 – w  
601-384-0470 – c  
marandabrooke@gmail.com

### **Meetings Coordinator**

Terrie Whitehurst  
P. O. Box 966  
Iuka, MS 38852  
662-279-9718 – c  
almostgone95@yahoo.com

### **Immediate Past President**

Tammie McCoy  
177 West Oxford Street  
Pontotoc, MS 38863  
662-489-5894 – h  
662-790-4134 – c  
mcco3938@bellsouth.net

### **President's Special Assistant**

Jeanith Burdine  
4501 Highway 415  
Ackerman, MS 39735  
662-387-4383 – h  
662-803-1363 – c  
burdine00@dtcweb.net

## **GFWC-MFWC District Presidents**

### **District I**

Nancy Griffin  
60 Bayou Lane  
Picayune, MS 39466  
601-798-8591 – h  
601-916-4564 – c  
nancygriffin1911@aol.com

### **District II**

Anne McKee  
5891 Windsor Circle  
Meridian MS 39305  
601 681-8525 – h  
601 479-2483 – c  
annielcy@aol.com

### **District III**

Sandra Pope  
113 Easley Avenue  
Bruce, MS 38915  
662-983-7478 – h  
662-983-5860 – c  
rudy@brucetelephone.com

### **District IV**

Mary Ellen Holloway  
413 Highland Drive  
Indianola, MS 38751  
662-887-2643 – h  
meholloway@bellsouth.net

### **District V**

Cindy Holcomb  
20 O'Kelly Road  
Purvis, MS 39475  
601-606-0645 – h  
cindyholcomb@yahoo.com

## **GFWC-MFWC Special Appointments**

### **Books**

#### **Scrapbooks**

Cassie Bryant  
108 Circle Drive  
Bruce, MS 38915  
662-414-9558 – c  
cassiefbryant@yahoo.com

#### **Yearbooks**

Lisa Barefield  
1321 CR 20  
Houlka, MS 38850  
662-419-7876 – c  
lm.barefield@gmail.com

#### **Books Assistant**

Karen Hardin-Nestor  
139 Arthur Street  
Bruce, MS 38915  
901-591-6702 – c  
khardinnestor@yahoo.com

### **Youth Art**

Libby Everett  
113 Temple Road  
Petal, MS 39465  
601-544-8463 – h  
601-466-9418 – c  
libby\_everett@hotmail.com

## **MFWC President's Special Project**

**Annajeral Knight, Chair**  
P.O. Box 10  
Star, MS 39167  
601-845-7097 – h  
601-613-7090 – w/c  
annajeralknight@yahoo.com

#### **Eleanor Bayless**

184 Lewis Lane SE  
Meadville, MS 39653  
601-532-0017 – h  
601-384-4252 – c  
ejbayless@yahoo.com

### **Kate Thomas**

17304 Highway 489  
Union, MS 39365  
601-774-5279 – h  
601-479-5268 – c  
katethomas@bellsouth.net

### **Donna Hutchings**

901 39th Avenue  
Gulfport, MS 39501  
228-669-5094 – h  
dchutchings@cableone.net

## **HOBY Board Member**

*(See President)*

## **Mississippi Public Library Commission Member**

Celia Fisher  
109 West Monroe Avenue  
Okolona, MS 38860  
662-447-2487 – h  
662-315-1265 – c  
celiacfisher@bellsouth.net

## **Mississippi Public Broadcasting**

Elizabeth C. Powers  
500 East Wilson Avenue  
Greenwood, MS 38930  
662-453-6057 – h  
662-392-9399 – c  
powe6916@bellsouth.net

## **GFWC-MFWC Standing Committees**

### **Constitution and Bylaws**

#### **Judy T. Martin, Chair**

P. O. Box 472  
Raleigh, MS 39153  
601-540-1856 – c  
jmartin@mdot.state.ms.us

#### **Carolyn C. Huey**

102 Oakwood Lane  
Picayune, MS 39466  
601-798-8190 – h  
601-916-4892 – c  
carolynchuey@yahoo.com

#### **Etty Brown**

P.O. Box 811  
Eupora, MS 39744  
662-258-7719 – h  
662-552-0103 – c  
ettybrown@webster.k12.ms.us  
**ex-officio**  
President Suzanne Poynor  
Parliamentarian Tammie McCoy

### **Finance**

#### **Jo Anne Reid, Chair**

P.O. Box 420  
Ackerman, MS 39735  
662-285-6293 – h  
joareid@dtcweb.net

#### **Judy T. Martin**

*(See Constitution & Bylaws)*

### **Carolyn C. Huey**

*(See Constitution & Bylaws)*

### **Tammie McCoy**

*(See Parliamentarian)*

## **Elected GFWC-MFWC Officers**

## **Hebron Memorial Scholarship**

### **Ione Bond, Chair**

224 Beverly Hills Loop  
Petal, MS 39465  
601-545-1142 – h  
601-549-7475 – c  
abe.bond@comcast.net

### **Mary Ellen Holloway**

413 Highland Drive  
Indianola, MS 38751  
662-887-2643 – h  
meholloway@bellsouth.net  
**ex-officio**  
President Suzanne Poynor  
Education Chairs

## **Long-Range Planning**

### **Tommye Rosenbaum, Chair**

242 Upton Road  
Walnut Grove, MS 39189  
601-253-2353 - h  
tommyer@bellsouth.net

### **All GFWC-MFWC District Presidents**

#### **ex-officio**

President Suzanne Poynor  
President-elect Darlene Adams  
Vice President Sue Addy

## **M. Collie Covington Trustees**

### **Elected Officers**

## **Membership**

### **Darlene Adams, Chair**

*(See GFWC-MFWC President-elect)*  
**District President-elects**

## **Nominating**

**By election, per MFWC Bylaws  
in year 2013**

## **Resolutions and Recommendations**

### **Rowena Drinkwater, Chair**

107 Camp Garaywa Road  
Clinton, MS 39056  
601-924-6064 – h  
drinkwater01@bellsouth.net

### **Jana Jarrell**

46 54<sup>th</sup> Street  
Gulfport, MS 39507  
228-864-9077 – h  
228-697-0086 – c  
jarrellj@bellsouth.net

### **Katie Patterson, MD**

3 Tankesly Road  
Indianola, MS 38751  
662-887-7461 – h  
662-303-9079 – c  
drKatpat@yahoo.com

**ex-officio**

President Suzanne Poynor  
President-elect Darlene Adams

**State Headquarters**

**Mary Elizabeth (Teenie) Boone, Chair**

103 Willow Lane  
Florence, MS 39073  
601-845-7239 – h  
601-953-0964 – c  
tboone1011@windstream.net

**Belinda Peacher**

Assistant Chair  
2339 Tiffany Circle  
Florence, MS 39073  
601-845-5299 – h  
601-291-6937 – c  
semaint@aol.com

**District I**

**Libby Everett**  
(See Youth Art)

**District II**

**Coreen VanDevender**

109 North Decatur Street  
Union, MS 39365  
601-416-0690 – c  
coreen\_v@att.blackberry.net  
coreen\_v@yahoo.com

**District III**

**Cathy Higgins**

100 Lovers Lane Road  
Booneville, MS 38839  
662-728-3432 – h  
404-234-2804 – c  
higgins407@bellsouth.net

**District IV**

**Sharon Hudson**

11031 Highway 35 South  
Batesville, MS 38606  
662-609-0973  
mhshudson@hotmail.com

**District V**

**Dee Payne**

238 West Main Street  
Florence, MS 39073  
601-845-1444 – h  
601-941-2690 – c

**At large**

**Marie Boswell**

1518 Terrace Road  
Cleveland, MS 38732  
662-843-8470 – h  
mboswell1938@yahoo.com

**At large**

**Jackie Richardson**

200 Pinecrest Drive  
Union, MS 39365  
601-774-9278

Richards612000@yahoo.com  
**ex-officio**

President Suzanne Poynor  
President-elect Darlene Adams  
Vice President Sue Addy  
Meetings Coord. Terrie Whitehurst

**State Headquarters  
1935 Society**

**Sue Thompson, Chair**

4817 15<sup>th</sup> Place  
Meridian, MS 39305  
601-483-4438 – h  
601-917-4380 – c  
suesthompson@bellsouth.net

**State Institutions**

**Jeannie Pittman, Chair**

1044 Seventh Day Road  
Florence, MS 39073  
601-845-7053 – h  
601-506-9121 – c  
mimijpittman@aol.com

**Perrie Paul**

P. O. Box 92  
Star, MS 39167  
601-845-8363 – h  
601-927-3971 – c  
No email address

**Jan Delk**

154 Merchant Circle  
Ellisville, MS 39437  
601-477-2092 – h  
601-470-1844 – c  
janldelk@yahoo.com

**Ways and Means**

**Amy Jacobs, Chair**

P.O. Box 387  
Okolona, MS 38860  
662-447-2658 – w  
662-447-3569 – h  
jacobsgrage@bellsouth.net

**Tracy Waits**

P.O. Box 1804  
Prentiss, MS 39474  
601-792-2195 – h  
601-466-6069 – c  
tracyswaits@gmail.com

**Terry Shea**

31 County Road 450  
Iuka, MS 38852  
662-423-5982 – h  
662-279-6722 – c  
Joeymcobb@hotmail.com

**ex-officio**

President Suzanne Poynor  
President-elect Darlene Adams

**GFWC-MFWC  
Special Committees**

**Challenge Grant**

**Phyllis Whittington, Chair**

5313 Berrytown Road, SE  
Meadville, MS 39653  
601-532-6377 – h  
601-384-6112 – c  
Phyllis.Whittington@gencoatc.com

**Jane McArthur**

300 Mason Street #221  
Laurel, MS 39440  
601-428-4250 – h  
662-721-7638 – c  
mdsu@bellsouth.net

**Becky Wright**

81 CR 281  
Banner, MS 38913  
662-413-4477 – h  
662-983-8836 – c  
beckywright1964@gmail.com

**ex-officio**

President Suzanne Poynor

**Juniorette Committee**

**Mandy Mullins Laiche, Director**

(See Juniorette Director)

**Janae Harrelson**

P. O. Box 218  
Bruce, MS 38915  
662-414-5247  
shanae09@hotmail.com

djharrel@olemiss.edu

**ex-officio**

President Suzanne Poynor

**Malone-Sisk  
Education/Leadership  
Endowment Fund Trustees**

**Ivovs Sisk**

P.O. Box 2116  
Tupelo, MS 38803  
662-841-2501 – h  
662-891-9143 – c  
gisisk@intop.net

ivovswfta@comcast.net

**Treasurer Diane Rouse  
Finance Chair Jo Anne Reid**

**Sarah Peugh Butterfly  
Scholarship**

**Shirley Hilburn, Chair**

1100 South Fifth Avenue  
Cleveland, MS 38732  
662-843-5295 – h  
662-719-4900 – c  
sahilburn@cablone.net

**Penny Barr**

33 Estate Drive  
Petal, MS 39465  
601-583-8426 – h  
601-606-8816 – c  
barrbunch@comcast.net

**Tami Harris**

1101 Stemwood Drive  
Picayune, MS 39466  
601-798-6659 – h  
601-273-0731 – c  
darrentami@bellsouth.net

**Education Chairs**

**ex-officio**

President Suzanne Poynor

**GFWC-MFWC  
Community Service  
Program Appointments**

**ARTS**

**Partnership Chair**  
Shirley Stough  
611 Birdie Circle  
Picayune, MS 39466  
601-798-7489 – h  
601-590-5228 – c  
stoughje@datastar.net  
**Program Chair**  
Theresa Berryhill  
3432 SCR 128  
Raleigh, MS 39153  
601-789-5422 – h  
tt\_berryhill@hotmail.com

**CONSERVATION**

**Partnership Chair**  
Whitney Smith  
520 Highway 346  
Ecru, MS 38841  
662-509-9807 – h  
662-419-9750 – c  
whitneywsmith@bellsouth.net  
**Program Chair**  
Belinda Peacher  
2339 Tiffany Circle  
Florence, MS 39073  
601-845-5299 – h  
601-291-6937 – c  
semaint@aol.com

**EDUCATION**

**Partnership Chair**  
Deana Pittman  
477 Katherine Trail  
Batesville, MS 38606  
662-560-3847 – c  
dtpittman@hotmail.com  
**Program Chair**  
Ella Cronin  
403 South First Street  
Cleveland, MS 38732  
662-843-5053 – c  
hcronin@deltastate.edu  
**Assistant**  
Ann White  
139 Third Street  
Flora, MS 39071  
601-506-8752 – c  
awhiteteacher7@hotmail.com

**HOME LIFE**

**Partnership Chair**  
Theresa Buntyn  
P.O. Box 355  
Decatur, MS 39327  
601-635-4714 – h  
601-562-6547 – c  
tbuntyn81@yahoo.com

**Program Chair**  
Pam Smith  
1308 Gunter Road  
Florence, MS 39073  
601-672-9000 – h  
stillgood98@hotmail.com

**INTERNATIONAL OUTREACH**

**Partnership Chair**  
Sue McMurtry  
P.O. Box 115  
Quitman, MS 39355  
601-776-3447 – h  
sue.mcmurtry@yahoo.com  
**Program Chair**  
Kathleen Penton  
114 Donald Penton Road  
Picayune, MS 39466  
601-798-1770 – h  
601-799-9538 – c  
kp.thecenter@gmail.com

**PUBLIC ISSUES**

**Partnership Chair**  
Rhonda Terrell  
3908 Union Church Road  
Meadville, MS 39653  
601-384-5009 – h  
601-384-6030 – c  
Rhonda.terrell@va.gov  
**Program Chair**  
Melba Watkins  
3208 Star Road  
Florence, MS 39073  
601-845-7922 – h  
601-946-8540 – c  
jimwatkins@windstream.net

**Juniors' Special Project:  
Advocates for Children**

Debbie Hamilton, Chair  
P.O. Box 241  
Purvis, MS 39475  
601-270-4641 – w  
601-794-8703 – h  
mark3745@bellsouth.net  
**Assistant**  
Janice Coutch  
2755 Clubhouse Road  
Utica, MS 39175  
601-259-9068 – c  
mimijcouth@aol.com

**GFWC Signature Project:  
Domestic Violence Awareness**

Lynda Love, Chair  
113 Hampton Place  
Hattiesburg, MS 39402  
601-818-1675 – c  
lynda.essary@yahoo.com  
**Assistant Chair**  
Shelia Owen  
2691 Highway 346  
Pontotoc, MS 38863  
662-489-1941 – h  
662-760-9483 – c  
sheliaowen14@yahoo.com

**GFWC-MFWC  
Advancement Chairs**

**Communications**

Cindy Holcomb  
20 O'Kelly Road  
Purvis, MS 39475  
601-606-0645 – h  
cindyholcomb@yahoo.com

**Fundraising**

Patricia (Pat) B. Lee  
15 Mississippi Street  
Purvis, MS 39475  
601-270-9081 – h  
601-270-9081 – c  
patriciablee1@yahoo.com

**Leadership**

Jo Anne Reid  
P.O. Box 420  
Ackerman, MS 39735  
662-285-6293 – h  
joareid@dtcweb.net

**Legislation and Public Policy**

Elizabeth (Lib) Massey  
P.O. Box 93  
Bruce, MS 38915  
662-983-2093 – h  
lib@brucetelephone.com

**Membership**

Darlene Adams  
(See *President-elect*)

**MS LEADS**

Susan Shurden  
160 Blythe Creek Road  
Mathiston, MS 39752  
662-325-2466 – w  
662-263-4349 – h  
sshurden@foundation.msstate.edu

**Women's History and  
Resource Center**

Dorothy Thomas  
736 Forest Park Circle  
Philadelphia, MS 39350  
601-650-9608 – h  
601-416-0307 – c  
dl39thomas@gmail.com

**GFWC Clubwoman Magazine**

Glenda Tarver  
427 Porter Bayou  
Shaw, MS 38773  
662-754-6307 – h  
662-820-4389 – c  
gandhtarver@att.net

## ***GFWC Contest Chairs***

### **Community Improvement Program Award**

Willie Grace Myatt  
P.O. Box 761  
Raleigh, MS 39153  
601-733-9673 – h  
wgmyatt@bellsouth.net

### **Jennie Award**

Carolyn C. Huey, Chair  
(See Constitution and Bylaws)

### **Media Campaign Contests**

Frances Brown  
680 Highway 9 North  
Bruce, MS 38915  
662-414-1048 – c  
frannabrown@hotmail.com

### **Newsletter Contest**

Pat Gandy  
78 Buford Gandy Road  
Waynesboro, MS 39367  
601-735-2379 – h  
601-381-2702 – c  
patandlarry@bellsouth.net

### **Photography Contests**

Carolyn Long  
204 Buckingham Street  
Okolona, MS 38840  
662-447-2929 – h  
662-891-0271 – c  
carolynjpl@gmail.com

### **Website Contest**

Chris Pasquale  
P. O. Box 139  
Bruce, MS 38915  
662-800-2005 – h  
662-414-5569 – c  
squalecc@hotmail.com

### **Writing Contests**

Anne McKee  
(See District II President)

## ***District I Officers & Chairs***

### **President**

Nancy Griffin  
60 Bayou Lane  
Picayune, MS 39466  
601-798-8591 – h  
601-916-4564 – c  
nancygriffin1911@aol.com

### **President-elect**

Sherri Reid  
542 Leeville Road  
Petal, MS 39465  
601-270-4464 – c  
reidshe@comcast.net

### **Vice President**

Jana Jarrell  
46 54th Street  
Gulfport, MS 39507  
228-864-9077 – h  
228-697-0086 – c  
jarellj@bellsouth.net

### **Secretary**

Jessica Buckhaults  
14 Danmar Drive  
Ellisville, MS 39437  
601-477-3914 – h  
601-319-1717 – c  
jessicabuckhaults@yahoo.com

### **Treasurer**

Jan Delk  
158 Merchant Circle  
Ellisville, MS 39437  
601-477-2092 – h  
601-470-1844 – c  
janldelk@yahoo.com

### **Parliamentarian**

Libby Everett  
113 Temple Road  
Petal, MS 39465  
601-544-8463 – h  
601-466-9418 – c  
libby\_everett@hotmail.com

### **Historian**

Linda Hawkins  
201 Dogwood Drive  
Poplarville, MS 39470  
601-795-2992 – h  
601-337-3197 – c  
lindahawkins2311@yahoo.com

### **Chaplain**

Vera Beech  
176 Entrekin Road  
Carriere, MS 39426  
601-798-3039 – h  
vbeech@pcu.k12.ms.us

### **Arts and Crafts Chair**

Shirley Stough  
611 Birdie Circle  
Picayune, MS 39466  
601-798-7489 – h  
601-590-5228 – c  
stoughje@bellsouth.net

### **Books Chair**

Donna Hutchings  
901 39th Avenue  
Gulfport, MS 39501  
228-669-5094 – c  
dchutchins@cableone.net

### **Ways and Means Chair**

Shirley Wiltshire, Chair  
508 S. Julia Street  
Poplarville, MS 39470  
601-795-2972 – h  
wiltshis@bellsouth.net

## ***District I Club Presidents***

### **Cosmopolitan Club of Petal**

Penny Barr  
33 Estate Drive  
Petal, MS 39465  
601-583-8426 – h  
601-606-8816 – c  
barrbunch@comcast.net

### **Fidelia Club of Ellisville**

Pam Nunes  
415 Jefferson Street  
Ellisville, MS 39437  
601-477-9090 – h  
601-580-3339 – c  
nunes\_pam@yahoo.com

### **Fine Arts Club of Waynesboro**

Toni Clements  
107 Breckenridge Drive  
Waynesboro, MS 39367  
601-671-0521 – h  
601-381-1641 – c

### **GFWC-MFWC Civic Woman's Club of Picayune**

Jennifer Houston  
1112 Parkwood Circle  
Picayune, MS 39466  
601-798-7214 – h  
601-270-6326 – c  
jennifer.r.houston@nasa.gov

### **GFWC-MFWC Present Day Club of Waynesboro**

Carly Yarber  
2425 Waynesboro-Shubuta Road  
Waynesboro, MS 39367  
601-735-0133 – h  
601-381-2506 – c  
cbynurse@yahoo.com

### **Home and Garden Club of Waynesboro**

Lona Pearl Barnett  
722 Hudson Lane  
Waynesboro, MS 39367  
601-735-2360 – h  
601-381-5668 – c  
barnett2360@att.net

### **Lucedale Fine Arts Club**

Janice Cowart  
75 Miller Road  
Lucedale, MS 39452  
601-947-3218 – h  
601-947-0721 – c  
janicecowart@yahoo.com

### **Lucedale Woman's Club**

Bonnie Albritton  
107 Live Oak Drive  
Lucedale, MS 39452  
228-217-4919 – h  
albritton1912@yahoo.com



**Moss Point Fortnightly Club**  
Susan DeLashmet  
3925 Dantzler Street  
Moss Point, MS 39563  
228-475-2922 – h  
tommynsusana@bellsouth.net

**Pascagoula Civic Guild**  
Michelle Blevins  
3007 Northwood Avenue  
Pascagoula, MS 39567  
228-623-2867 – c  
mapril8@yahoo.com

**Poplarville Woman's Club**  
Nelda Mills  
29 Deer Trail Drive  
Poplarville, MS 39470  
601-795-4664 – h  
601-569-3032 – c  
nelda\_mills54@yahoo.com

**Woman's Club of Gulfport**  
Ruthie Kennedy  
1815 22nd Avenue  
Gulfport, MS 39501  
228-864-1800 – h  
coastmom@hotmail.com

### ***District I Juniorette Clubs***

**Pascagoula Juniorette Club**  
Michelle Blevins, Co-Advisor  
3007 Northwood Avenue  
Pascagoula, MS 39567  
228-623-2867 – c  
mapril8@yahoo.com

Nancy McInvale, Co-Advisor  
3517 Montgomery Lane  
Pascagoula, MS 39567  
228-762-1109 – h  
228-327-1109 – c

Brooxanne Crump, President  
P.O. Box 519  
Pascagoula, MS 39567  
228-218-1663 – c  
brooxanne@cableone.net

**Picayune Service Club**  
Jodi Marze, Advisor  
525 River Road  
Picayune, MS 39466  
601-798-9511 – h  
985-710-0944 – c  
jmarze@picayuneitem.com

**Sub-Debs of Waynesboro**  
Doris Stanley, Advisor  
551 Waynesboro-Shubuta Road  
Shubuta, MS 39360  
601-687-5339 – h  
brookmsk@aol.com

### ***DISTRICT II Officers & Chairs***

**President**  
Anne McKee  
5891 Windsor Circle  
Meridian, MS 39305  
601-681-8525 – h  
601-479-2483 – c  
annielcy@aol.com

**President-elect**  
Theresa Buntyn  
P.O. Box 355  
Decatur, MS 39327  
601-562-6547 – c  
tbuntyn81@yahoo.com

**Vice President**  
Susan Shurden  
160 Blythe Creek Rd  
Mathiston, MS 39752  
662-285-3282 – h  
662-312-1532 – c  
sshurden@foundation.msstate.edu

**Secretary**  
Betty Purvis  
370 CR 3673  
Enterprise, MS 39330  
601-403-7517 – h  
601-527-9044 – c  
grammie\_purvis@yahoo.com

**Corresponding Secretary**  
Barbara Wells  
4633 Royal Road  
Meridian, MS 39307  
601-485-8096 – h  
staceyjwells@yahoo.com

**Treasurer**  
Melissa Carleton  
P.O. Box 253  
Union, MS 39365  
601-744-7122 – h  
mtcarletan@choctaw.org

**Parliamentarian**  
Tommye Rosenbaum  
242 Upton Road  
Walnut Grove, MS 39189  
601-253-2353 – h  
tommyer@bellsouth.net

**Historian**  
Pat Mioton  
300 Mimosa Street  
Philadelphia, MS 39350  
601-656-5216 – h  
601-416-3336 – c  
pmioton@bellsouth.net  
pmioton@hotmail.com

**Chaplain**  
Joan Feliciano  
12010 Road 236  
Union, MS 39365  
(601) 774-9717 – h  
heavenigo\_58@yahoo.com

**Arts Chair**  
Mary Ford  
212 Brock Avenue  
Quitman, MS 39355  
601-776-3988 – h  
601-479-4588

**Books Chair**  
Dorothy Thomas  
736 Forest Park Circle  
Philadelphia, MS 39350  
601-650-9608 – h  
601-416-0307 – c  
dl39thomas@gmail.com

**Crafts Chair**  
Mary Ethridge  
5791 Vimville-Causeyville Road  
Meridian MS 39301  
601-644-9856  
601-917-7187  
Ethridge2007@att.net

**Photography Chair**  
Rande Brown  
195 CR 3708  
Enterprise, MS 39330  
601-659-3435 – h  
randejoe@bellsouth.net

**Ways and Means Chair**  
Sheila "Tinker" Forrester  
5257 Highway 15  
Ackerman, MS 39735  
662-285-3284 – h  
662-312-1532 – c  
tinksdaisies@aol.com

### ***District II Club Presidents***

**Decatur Woman's Progressive Club**  
Ada McGrevey  
PO Box 570  
Decatur, MS 39327  
601-934-1359 – c  
mcgrevey1@aol.com

**Enterprise Woman's Club**  
Kay Risher  
P.O. Box 203  
Enterprise, MS 39330  
601-659-4446 – h  
601-938-3596 – c  
kayrisher@att.net

**Fortnightly Club of Meridian**

Kay Wolfe  
1613 43<sup>rd</sup> Street  
Meridian, MS 39350  
601-482-4457 – h  
601-613-6273 – c  
wolfe5218@aol.com

**GFWC Ackerman Twentieth Century Club**

Susan Shurden  
160 Blythe Creek Road  
Mathiston, MS 39752  
662-285-3282 – h  
662-312-1532 – c  
sshurden@foundation.msstate.edu

**GFWC-MFWC Futura Club**

Dorothy Thomas  
736 Forest Park Circle  
Philadelphia, MS 39350  
601-650-9608 – h  
601-416-0307 – c  
dl39thomas@gmail.com

**Philadelphia Woman's Club**

Pat Mioton  
300 Mimosa Street  
Philadelphia, MS 39350  
601-656-5216 – h  
601-416-3336 – c  
pmioton@bellsouth.net  
pmioton@hotmail.com

**Present Day Club of Union**

Jackie Richardson  
200 Pinecrest Drive  
Union, MS 39365  
601-774-9278 – h  
richards612000@yahoo.com

**Quitman Woman's Club**

Sue McMurtry  
P.O. Box 115  
Quitman, MS 39355  
601-776-3447 – h  
sue.mcmurtry@yahoo.com

**Round Table of Meridian**

Mary Ethridge  
5791 Vimville-Causeyville Road  
Meridian, MS 39301  
601-644-9856 – h  
601-917-7187 – c  
ethridge2007@att.net

**Thursday Club of Walnut Grove**

Jennifer Nettles  
26 Wimbledon Drive  
Jackson, MS 38211 2443  
601-956-7461 – c  
ggmarlin@aol.com

**Twentieth Century Club of Sallis**

Sarah Rick  
6440 Grapevine Street  
Sallis, MS 39160  
662-289-4439 – h

**Twenty-first Century Club of Kosciusko**

Mary Wamble  
1022 Hickory Ridge  
Kosciusko, MS 39090  
662-289-1672 – h  
mwamble@bellsouth.net

**District II  
Juniorette Clubs**

**Futura Juniorettes of Philadelphia**  
(To Be Announced)

**DISTRICT III  
Officers & Chairs****President**

Sandra Pope  
113 Easley Avenue  
Bruce, MS 38915  
662-983-7478 – h  
662-983-5860 – c  
rudy@brucetelephone.com

**President-elect**

Terrie Whitehurst  
P.O. Box 966  
Iuka, MS 38852  
662-279-9718 – c  
almostgone95@yahoo.com

**Vice President**

Faith West  
P.O. Box 95  
Prairie, MS 37956  
662-369-6646 – h  
faithw@earthlink.net

**Recording Secretary**

Lyn Blaylock  
291 South Dunn Street  
Eupora, MS 39744  
662-258-6595 – h  
662-983-8268 – c  
slblaylock@att.net

**Treasurer**

Frances Brown  
680 Highway 9 North  
Bruce, MS 38915  
662-414-1048 – c  
frannabrown@hotmail.com

**Corresponding Secretary**

Cassie Bryant  
108 Circle Drive  
Bruce, MS 38915  
662-983-9558 – h  
cassiebryant@yahoo.com

**Parliamentarian**

Tammie McCoy  
177 West Oxford Street  
Pontotoc, MS 38863  
662-489-5894 – h  
662-790-4134 – c  
mcco3938@bellsouth.net

**Historian**

Jo Uptain  
P.O. Box 370  
Aberdeen, MS 39730  
662-369-8109 – h  
662-369-1844 – c  
juptain@ms.metrocast.net

**Chaplain**

Emily Gibbs  
158 West Margin Street  
Pontotoc, MS 38863  
662-489-0164 – h  
662-419-3713 – c  
emilygibbs@bellsouth.net

**Arts Chair**

Whitney Smith  
520 Highway 346  
Ecru, MS 39807  
662-419-9750 – h  
662-509-9807 – c  
whitneywsmith@bellsouth.net

**Youth Art Co-Chairs**

Amy Jacobs, Co-Chair  
P.O. Box 387  
Okolona, MS 39960  
662-447-3569 – c  
jacobsargarage@bellsouth.net

**Abby May, Co-Chair**

224 CR 137  
Okolona, MS 38860  
662-542-0587 – c  
abbymay002@yahoo.com

**Books Chair**

Amanda Gullledge  
46 CR 225  
Bruce, Ms 38915  
662-983-5795 – c  
amandagullledge@yahoo.com

**Crafts Chair**

June Vaughn  
89 CR 257  
Bruce, MS 38915  
662-983-4019 – h  
662-983-8388 – c  
junevaughn@brucetelephone.com

**Ways and Means Chair**

Sheila Owen  
2691 Highway 346  
Pontotoc, MS 38863  
662-489-1941 – h  
662-760-9483 – c  
sheilaowen14@yahoo.com

**District III  
Club Presidents****Fulton Civic Club**

Amy Hill  
1876 Walker Levee Road  
Fulton, MS 38843  
662-585-4253 – h  
662-322-2268 – c  
amyjhilotri@yahoo.com

**GFWC-MFWC Eupora Twentieth Century Club**  
Naioma Lamb  
577 Old Highway 82  
Eupora, MS 39744  
662-258-7675 – h  
662-242-5607 – c  
naiomalamb@gmail.com

**GFWC-MFWC Fine Arts Club of Bruce**  
Rose Mary Shelton  
P.O. Box 633  
Bruce, MS 38915  
662-983-2023 – h  
662-414-6427 – c  
rmjshelton@brucetelephone.com

**GFWC-MFWC Iuka Twentieth Century Club**  
Jo Russell  
51 CR 179  
Iuka, MS 38852  
662-424-0298 – h  
662-279-7237 – c

**GFWC-MFWC Lanier Club**  
Celia Fisher  
109 West Monroe Avenue  
Okolona, MS 38860  
662-447-2487 – h  
662-315-1265 – c  
celiafisher@bellsouth.net

**GFWC-MFWC New Century Club of Calhoun City**  
Stephanie Lucius  
P.O. Box 397  
Calhoun City, MS 38916  
662-628-1840 – h  
662-401-4182 – c  
slucius@calhoun.k12.ms.us

**GFWC-MFWC Twentieth Century Club of Bruce**  
Lisa Barefield  
1321 CR 20  
Houlka, MS 38850  
662-419-7876 – c  
lm.barefield@gmail.com

**Pontotoc Woman's Club**  
Emily Gibbs  
158 West Margin Street  
Pontotoc, MS 38863  
662-489-0164 – h  
662-419-3713 – c  
emilygibbs@bellsouth.net

**Sorosis Club of Tupelo**  
Ivous Sisk  
P.O. Box 2116  
Tupelo, MS 38803  
662-842-2501 – h  
662-891-9143 – c  
ivouswfta@comcast.net

**Woman's Club of Aberdeen**  
Faith West  
P.O. Box 95  
Prairie, MS 39756  
662-369-6646 – h  
faithw@earthlink.net

**Woman's Club of Booneville**  
Dr. Neola Cleveland  
101 Wildwood Drive  
Booneville, MS 38829  
662-728-4620 – h  
weneola@bellsouth.net

### ***District III Juniorette Clubs***

**Booneville High School Juniorettes**  
Lana Harrelson, Advisor  
304 Oakhaven Circle  
Booneville, MS 38829  
662-728-3387 – h  
662-423-8151 – c  
lanah@ms.metrocast.net

**Bruce Fine Arts Juniorettes**  
Janae Harrelson, Advisor  
P.O. Box 218  
Bruce, MS 38915  
662-414-5247 – c  
djharrel@olemiss.edu

Carleigh Leachman, President  
P.O. Box 820  
Bruce, MS 38915  
662-414-8298 – c  
carleigh\_leachman@hotmail.com

**Fulton Juniorettes**  
Gina Davis, Advisor  
101 Southern Oaks Drive  
Fulton, MS 38843  
662-862-6955 – h  
662-401-3781 – c  
gdavis@selectconnect.net

Chelsea Canup, President  
102 Francis Drive  
Fulton, MS 38843  
662-862-2007 – h  
662-791-9844 – c  
chelsealeanna@hotmail.com

**Pontotoc Juniorette Club**  
Whitney Smith, Advisor  
520 Highway 346  
Ecru, MS 38841  
662-509-9807 – h  
662-419-9750 – c  
whitneysmith@bellsouth.net

### ***DISTRICT IV Officers & Chairs***

**President**  
Mary Ellen Holloway  
413 Highland Drive  
Indianola, MS 38751  
662-887-2643 – h  
meholloway@bellsouth.net

**President-elect**  
Ella Cronin  
403 South First Street  
Cleveland, MS 38732  
662-843-5053 – c  
hcronin@deltastate.edu

**Secretary**  
Mary Jo Cook  
110 Shagbark Drive  
Batesville, MS 38606  
662-562-7792  
wlcook@panola.com

**Treasurer**  
Glenda Tarver  
427 Porter Bayou Road  
Shaw, MS 38773  
662-820-4389  
gandhtarver@att.net

**Parliamentarian**  
Mary Ester Murphree  
192 CR 4  
Carrollton, MS 38917  
662-453-1223

**Historian**  
Helen Jenkins  
207 Heathman Avenue  
Indianola, MS 38751  
davidj4@bellsouth.net

**Arts Chair**  
Paula Sue Prysock  
705 W. Gresham Street  
Indianola, MS 38751

**Books Chair**  
Deana Pittman  
477 Katherine Trail  
Batesville, MS 38606  
662-560-3847 – c  
dtpittman@hotmail.com

**Ways and Means Chair**  
Marie Boswell  
1518 Terrace Road  
Cleveland, MS 38732  
662-843-8470

### ***District IV Club Presidents***

**Batesville Junior Woman's League**  
Chanda Lantern  
401 Brasher Road  
Batesville, MS 38606  
662-654-6413  
chanda\_aka@yahoo.com

**EPHFC Woman's Club**  
Tracy Craddock  
104 N. Victoria Avenue  
Cleveland, MS 38732  
662-843-1497  
tcraddock@msdelta.edu

**GFWC-MFWC Batesville  
Woman's Club**  
Ellen McCachren  
2560 Pope Crowder Road  
Enid, MS 38927  
662-563-7552

**GFWC-MFWC Cleveland  
Woman's Club**  
Linda Kern  
4044 Highway 8, Apt. E  
Cleveland, MS 38732  
662-843-2895  
lkern@bol.lib.ms.us

**Greenwood Woman's Club**  
Mary Ester Murphree  
192 CR4  
Carrollton, MS 38917  
662-453-1223

**Indianola Civic League**  
Susan Wilson  
76 Round Lake Lane  
Indianola, MS 38751  
662-347-1410  
wilcon1974@att.net

**LeBonte Woman's Club of  
Greenwood**  
Grace Whites  
714 Centennial Drive  
Greenwood, MS 38935

***District IV  
Juniorette Clubs***

**Delta Belles Juniorettes**  
Terry Grantham, Advisor  
712 Centennial Drive  
Greenwood, MS 38930

***DISTRICT V  
Officers & Chairs***

**President**  
Cindy Holcomb  
20 O'Kelly Road  
Purvis, MS 39475  
601-606-0645 – h  
cindyholcomb@yahoo.com

**President-elect**  
Melba Watkins  
3208 Star Road  
Florence, MS 39073  
601-845-7922 – h  
601-946-8540 – c  
jimwatkins@windstream.net

**Vice President**  
Lisa A. Harris  
822 SCR 115 South  
Raleigh, MS 39153  
601-940-1519 – c  
laharris@hughes.net

**Secretary**  
Jeannie Pittman  
1044 Seventh Day Road  
Florence, MS 39073  
601-845-7053 – h  
601-506-9121 – c  
mimijpittman@aol.com

**Treasurer**  
Phyllis Whittington  
5313 Berrytown Road, SE  
Meadville, MS 39653  
601-532-6377 – h  
601-384-6112 – c  
Phyllis.Whittington@gencoatc.com

**Corresponding Secretary**  
Patricia (Pat) B. Lee  
15 Mississippi Street  
Purvis, MS 39475  
601-270-9081 – c  
patriciablee1@yahoo.com

**Parliamentarian**  
Mary Edmond  
P. O. Box 283  
Raleigh, MS 39153  
601-782-4710 – h  
pmedmond@netdoor.com

**Historian**  
Rhonda R. Terrell  
3908 Union Church Road  
Meadville, MS 39653  
601-384-5009 – h  
601-384-6030 – c  
rhonda.terrell@va.gov

**Chaplain**  
Dana Carol Bridges  
P. O. Box 238  
Star, MS 39167  
601-845-5863 – h  
601-842-7097 – c  
dc.bridges@rcsd.ms

**Arts Chair**  
Debbie Hamilton  
P. O. Box 241  
Purvis, MS 39475  
601-794-8703 – h  
601-270-4641 – c  
mark3745@bellsouth.net

**Youth Art Chair**  
Renay Zumbro  
155 Eddiceton Circle, North  
McCall Creek, MS 39467  
renayzumbro@telepak.net

**Books Chair**  
Ann White  
139 Third Street  
Flora, MS 39071  
601-506-8752  
awhiteteacher7@hotmail.com

**Crafts Chair**  
Debbie Hamilton  
P. O. Box 241  
Purvis, MS 39475  
601-794-8703 – h  
601-270-4641 – c  
mark3745@bellsouth.net

**Ways and Means**  
Patricia (Pat) B. Lee  
15 Mississippi Street  
Purvis, MS 39475  
601-270-9081 – c  
patriciablee1@yahoo.com

**Domestic Violence Awareness**  
Annajeral Knight  
P.O. Box 10  
Star, MS 39167  
601-845-7097 - h  
601-613-7090 - c  
annajerknight@yahoo.com

**Constitution & Bylaws**  
Rowena Drinkwater  
107 Camp Garaway Road  
Clinton, MS 39056  
601-924-6064 - h  
drinkwater01@aol.com

***District V  
Club Presidents***

**Crystal Springs Floral Club**  
Jeanette McCoy  
3015 Rutledge Road  
Crystal Springs, MS 39059  
601-894-4576-h

**GFWC-MFWC Florentine Club**  
Grace Peeples  
321 West Main Street  
Florence, MS 39073  
601-845-8999 – h  
601-214-9714 – c  
eepeeples@windstream.net

**GFWC-MFWC Florentine  
Evening Club**  
Dee Payne  
238 West Main Street  
Florence, MS 39073  
601-845-1444-h  
601-941-2690 – c

**GFWC-MFWC Gavel Club**  
Tommye Rosenbaum  
242 Upton Road  
Walnut Grove, MS 39189  
601-253-2353 – h  
tommyer@bellsouth.net

**GFWC-MFWC Homochitto  
Heritage Club, Inc.**  
Mandy Laiche  
177 Monroe Road SE  
Meadville, MS 39653  
601-384-0470-c  
marandabrooke@gmail.com

**GFWC-MFVC Purvis Woman's Club**

Kristy Breazeale  
P.O. Box 39  
Purvis, MS 39475  
601-549-6155 – c  
kristb23@aol.com

**GFWC-MFVC Raleigh Woman's Club**

Lisa A. Harris  
822 SCR 115 South  
Raleigh, MS 39153  
601-940-1519 – c  
laharris@hughes.net

**GFWC-MFVC Star Woman's Club**

Annajeral Knight  
P.O. Box 10  
Star, MS 39167  
601-845-7097 - h  
601-613-7090 - c  
annajerknight@yahoo.com

**LeBonte Woman's Club of Clinton**

Carol Kelly  
104 Woodmoor Cove  
Clinton, MS 39056  
601-924-7216

**Maids & Matrons Club of Clinton**

Letha Smith  
12 Pawnee Trail  
Clinton, MS 39056  
smith.leatha@att.net

**Twentieth Century Club of Prentiss**

Deborah Dickens  
P.O. Box 1895  
Prentiss, MS 39474  
601-792-8783 – h  
601-408-2885 – c  
dickens\_de@yahoo.com

**District V  
Juniorette Clubs**

**GFWC-MFVC Dixie Daisy Juniorettes**

Ashley Hammack, Co-Advisor  
219 Barlow Road  
Meadville, MS 39653  
601-384-0341  
ahancock2927@yahoo.com

Tanya Deer, Co-Advisor  
3105 Gloster Road  
Meadville, MS 39653  
601-384-0466  
tanyadeer@ftcweb.net

Anna Bein, President  
580 Bein Ln. SE  
Smithdale, MS 39664  
601-384-6782  
beinanna@yahoo.com

**GFWC-MFVC Florence Juniorettes**

Belinda Peacher, Co-Advisor  
2339 Tiffany Circle  
Florence, MS 39073  
601-845-5299 – h  
601-291-6937 – c  
semaint@aol.com

Lisa Smith, Co-Advisor  
141 Ridgeview Drive  
Florence, MS 37073  
601-845-4998 – h  
601-750-9667 – c  
Sallysmom98@yahoo.com

Sally Smith, President  
141 Ridgeview Drive  
Florence, MS 37073  
601-845-4998 – h  
601-750-9667 – c

**GFWC-MFVC Les Aimes Juniorettes**

Melanee Slade, Advisor  
P. O. Box 837  
Purvis, MS 39475  
601-606-4856  
melanee.slade@yahoo.com

**GFWC-MFVC Star Juniorettes**

Melba Watkins, Co-Advisor  
3208 Star Road  
Florence, MS 39073  
601-845-7922 – h  
601-946-8540 – c  
jimwatkins@windstream.net

Annajeral Knight, Co-Advisor  
P.O. Box 10  
Star, MS 39167  
601-845-7097 - h  
601-613-7090 - c  
annajerknight@yahoo.com



**GFWC-Mississippi Federation of Women's Club's  
Delegation to GFWC International Convention,  
Charlotte, North Carolina, June 14- 17, 2012  
Front – Rowena Drinkwater, 2012-2014 GFWC-MFVC President  
Suzanne Poynor, 2010-2012 GFWC-MFVC President Tammie McCoy,  
Back – Ivous Sisk, Jeanith Burdine, Judy Martin,  
Jo Anne Reid, and Terrie Whitehurst**

**GFWC-MFWC STATE CONVENTION ~ Raymond, MS ~ APRIL 26-28, 2012**



**2010-2012 GFWC-MFWC President Tammie McCoy (second from left) presented 2011 GFWC-MFWC Club of the Year Award to GFWC-MFWC Star Woman's Club.**



**2011 GFWC-MFWC Clubwoman of the Year Dot Hardin Pontotoc Woman's Club**



**Celia Fisher (left), GFWC-MFWC Lanier Club, Okolona 2011 Jennie Award Winner with 2010-2012 GFWC-MFWC President Tammie McCoy**



**Terrie Whitehurst (left), GFWC-MFWC Iuka Twentieth Century Club, GFWC-MFWC LEADS Delegate to 2012 GFWC International Convention with Ivous Sisk, Malone- Sisk Education/ Leadership Endowment Fund Trustee**



**Katlin Nolan (left) of Fulton 2012 Hebron Memorial Scholarship Winner with 2010-2012 GFWC-MFWC President Tammie McCoy**

**JUNIORETTE AWARDS**



**2011 Juniorette Club of the Year GFWC-MFWC Dixie Daisy Juniorettes**



**Sarah Peugh Butterfly Scholarship Recipient Bethany Wilemon Fulton Juniorettes**



**2011 Juniorette of the Year Kelsey Jackson GFWC-MFWC Dixie Daisy Juniorettes**

**Visit [www.gfwc-mfwc.org](http://www.gfwc-mfwc.org) to view the Spring 2012 District Convention issue and Special State Convention issue of the online MFWC Newsletter for more photos from 2012 District and State Conventions!**

**GFWC-MFWC Budget Information  
Fiscal Year 2012-2013**

**Receipts:**

GFWC Dues	1405 x \$15	\$21,075
MFWC Dues	1405 x \$10	14,050
(\$10 per members distributed as		
State Federation Fund	\$6.46	
Headquarters Fund	\$0.29	
MS Clubwoman Magazine	\$3.25	
Other:		
Tenant reimbursement	12 x \$500	6,000
For HQ utilities expenses		
<b>TOTAL:</b>		<b>\$41,125</b>

**Disbursements of Receipts:**

GFWC Dues	1405 x \$15	\$21,075
-----------	-------------	----------

**MFWC Dues & Other**

**State Federation Fund:**

*Officer Expenses:*

President	*GFWC Conv. Travel	\$2,000
	*GFWC SR Convention	1,000
	*GFWC Board Travel	1,000
	Instate Travel	450
	Desk Allowance	350
President-elect	*GFWC Conv. Travel	1,000
	*GFWC SR Convention	500
	Instate Travel	250
	Desk Allowance	100
Vice President	GFWC/SR Travel	0
	Desk Allowance	250
Treasurer	GFWC/SR Travel	0
	Desk Allowance	200
Recording Secretary	GFWC/SR Travel	0
	Desk Allowance	100

*General Operating Expenses:*

Southern Region Dues	30
Southern Region Fundraising Basket	100
Binding of Histories & Magazines	100
Office Supplies	200
State President's Pin	50
Income Tax Preparation	100
Website Service	300
Membership Initiatives	750
Juniorette Retreat	250

**State Federation Fund Disbursements \$9,080**  
(1405 X \$6.46)

**Headquarters Fund:**

Utilities	
Phone/alarm monitoring	1,000
Gas	1,200
Electric	3,500
Water/Sewage	600

Filters, pest control, termite inspection, lawn maintenance, building repairs, headquarters supplies, allowance, and headquarters insurance paid through the 1935 Society pursuant to Standing Rule 25

**Headquarters Fund Disbursements \$6,300**  
(1405 X .29 + tenant income of \$6,000)

**Mississippi Clubwoman Magazine**

Printing & Postage (1405 X \$3.25)	4,570
Editor Desk Allowance	100

**MS Clubwoman Disbursements \$4,670**

**TOTAL DISBURSEMENTS: \$ 41,125**

\*Actual expenses will be reimbursed in full based for travel, meals, registration, and room based on double occupancy.

**~CONGRATULATIONS~  
2011 First Place Winners Announced  
at GFWC International Convention  
Charlotte, North Carolina  
June 14-17, 2012**

- ❖ Conservation Partnership  
Carolyn Long, Chair
- ❖ Conservation Collaboration  
Melba Watkins, Chair
- ❖ Home Life Collaboration  
Frances Brown, Chair
- ❖ Education Partnership  
Deana Pittman, Chair
- ❖ Education Collaboration  
Ella Cronin, Chair
- ❖ International Outreach Partnership  
Sherri Reid, Chair
- ❖ Public Issues Partnership  
Darlene Adams, Chair
- ❖ GFWC Juniors' Special Project  
Advocates for Children  
Debbie Hamilton, Chair
- ❖ Legislation and Public Policy  
Sandra Pope, Chair
- ❖ Newsletter; Lisa A. Harris, Chair
- ❖ Website; Lisa A. Harris, Chair
- ❖ Fundraising; Mary Jo Cook, Chair
- ❖ Youth Poetry, Grades 3-5  
Christen Tindall, Sponsored by GFWC-  
MFWC Fine Arts Club of Bruce
- ❖ Tammie McCoy  
Charlotte Emerson Brown Award for  
Excellence (one of 12 winners)

**\*\*\*\*\*NOTE\*NOTE\*NOTE\*\*\*\*\***

**A listing of the GFWC-MFWC Awards  
presented at the 114<sup>th</sup> Annual Convention  
held in Raymond, MS on April 26-28, 2012  
is available online at [www.gfwc-mfwc.org](http://www.gfwc-mfwc.org).**

**Southern Region Conference  
"Puttin' On the Green"**

**October 26-28, 2012 Augusta, GA**

**Make plans now to attend SRC in October at the  
Augusta Marriott located at 210<sup>th</sup> Street,  
Augusta, GA 30901. To obtain room rates and  
make reservations, you may call 706-722-8900.  
This is certain to be a fun-filled and informative  
conference. MFWC's own Jo Anne Reid is  
serving as 2012-2014 Southern Region  
Secretary. Don't miss out on this special time  
with federated friends.**

**GFWC-Mississippi Federation  
of Women's Clubs, Inc.**  
2407 North State Street  
Jackson, MS 39216

NON-PROFIT ORG.  
POSTAGE PAID  
PERMIT #73  
39759



**2012-2014 GFWC-Mississippi Federation of Women's Clubs Officers  
(Elected and Appointed)**

(Left to right) Tinker Forrester, Chaplain; Sherri Reid, Corresponding Secretary; Tammie McCoy, Parliamentarian; Mandy Laiche, Juniorette Director; Diane Rouse, Treasurer; Suellen Brazil, GFWC Southern Region President; Suzanne Poynor, President; Darlene Adams, President-elect; Sue Addy, Vice President; Abby May, Recording Secretary and (not pictured) Misty Wright, Historian