



GFWC- MISSISSIPPI FEDERATION OF WOMEN'S CLUBS, INC.



WINTER 2013

VOLUME 4, ISSUE # 1

GFWC-MFWC
2407 NORTH STATE
STREET, JACKSON,
MS 39202
WWW.GFWC-MFWC.ORG

2012-2014 ADMINISTRATION OFFICERS

SUZANNE POYNOR
PRESIDENT

DARLENE ADAMS
PRESIDENT-ELECT

SUE ADDY
VICE PRESIDENT

ABBY MAY
RECORDING
SECRETARY

DIANE ROUSE
TREASURER

THE MISSISSIPPI
FEDERATION OF
WOMEN'S CLUBS,
INC., A PROUD
MEMBER OF THE
GENERAL
FEDERATION OF
WOMEN'S CLUBS



www.gfwc.org

Ayla and Stacy

Ayla, the hero of our article, is a four legged therapists and the only medication with no side-effects!!!. Ayla, a golden retriever facility dog, works in partnership with her facilitator and handler, Stacy Cook, in the Pet Assisted Program at the Neshoba General Hospital and Nursing Home in Philadelphia, MS. As a fully trained service dog, Ayla knows 44 commands aimed at helping people becoming more independent in therapy as well as in their home and community.

Ayla is a trained Canine Companions for Independence (CCI) dog and can be recognize by her vest, CCI badge and collar.

Let's back up a step or two and learn a little about Canine Companions for Independence (CCI) where Ayla was trained. CCI is the oldest and largest non-profit organization that provides trained dogs, like Ayla, to enhance the lives of children,

adults, and veterans with physical disabilities. Founded in 1975, they're leaders in the



field and have placed over 3,700 assistance dogs. Canine Companions breeds and trains their own dogs to get the temperament, intelligence, focus, health, and work ethic needed. Their breeding program is highly regarded and looked at by others for best practices. At eight weeks old, puppies are placed with volunteer puppy raisers who raise the puppies for 15 months, teaching basic obedience commands and socialization skills. Then they

return the dog to Canine Companions for six months of professional training to learn the 40+ commands they need to know to do tasks for people with disabilities.

Now, back to Ayla and Stacy. Ayla works with patients and residents to help them regain their health, function and independence. Specific rehabilitation goals of the Pet Assisted Program include:

- ★ Improve gait training
- ★ Improve sitting balance
- ★ Improve use of upper extremities
- ★ Improve attention
- ★ Increase motivation for participation and socialization
- ★ Increase auditory comprehension
- ★ Improve sequencing skills
- ★ Improve memory
- ★ Improve word retrieval
- ★ Decrease situational depression.

The goals of the Pet Assisted Program can be achieved through the following types of therapy:

(Continued on page 2)

*The GFWC-MFWC Newsletter
is published by the
GFWC-MFWC.*

*All submissions are
welcome. Photographs are
encouraged. E-mail or mail
articles and photos to*

*Lisa A. Harris
822 SCR 115 S
Raleigh, MS 39153
laharris@hughes.net
601) 940-1519*

Did You Know?

- ★ 21.5 million military veterans in the U. S. in 2011.
- ★ 1.6 million female veterans in 2011.
- ★ 2.3 million black veterans in the 2011.
- ★ 1.2 million veterans were Hispanic
- ★ 264,695 veterans were Asian
- ★ 153,223 were American Indian or Alaska Native
- ★ 27,469 were Native Hawaiian or Other Pacific Islander
- ★ 17.2 million were non-Hispanic white.
- ★ 9.2 million veterans 65 and older in 2011.
- ★ 1.8 million veterans younger than 35 in 2011.



(Continued from page 1)

- ★ Occupational therapy patients can increase their fine motor skills by grooming Ayla, playing fetch, brushing her teeth and massaging her. Special modifications are made to fit each patient and residents needs.
- ★ Physical therapy patients will increase their standing balance and endurance by playing fetch and help Stacy walk Ayla inside and outside the facility.
- ★ Speech therapy patients improve short term memory, problem solving, word retrieval sequencing and increase breath support by giving Ayla command, following commands steps and remembering information.

Ayla and her friend Maggie Mae, a therapy dog, along with the Activity Department of the Neshoba County Nursing Home work with patients and residents to:

- ★ Give comfort
- ★ Improve emotional and psychological well-being
- ★ Provide a listening ear and much more
- ★ Relieve stress and anxiety
- ★ Relieve depression and agitation

For more information on

Ayla, Maggie Mae and their programs or to volunteer your services, contact Stacy Cook, Animal Assisted Therapy Coordinator for NCGH/NH at 601-575-0249.

Update! Update! Ayla Wins Awards. Not 1 But 2 For Her Hard Work.

For her first award, Ayla and Stacy scored a perfect score on their public access test in Orlando, Florida. Ayla received best on commands for the entire graduate class and there were teams from all over the country. The CCI, let Stacy, Ayla's person, share in the honor of winning this award.

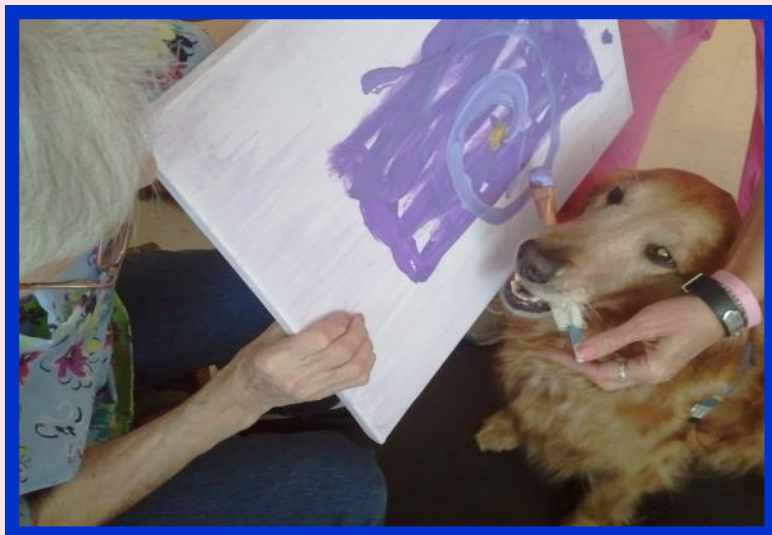
For her second award, Ayla was inducted as an honorary member of the Mississippi

Conference on Social Welfare. The Volunteer of the Year Award is designed to acknowledge the accomplishments and dedication of individuals who serve as volunteers in the field of dementia.

This award is given to someone who demonstrates commitment, compassion, competence, and volunteerism in the field of dementia care.

This year, the Volunteer of the Year is actually a honorary Volunteer. As a member of the Animal Assisted Therapy team of Neshoba County General Hospital and Nursing Home, Ayala is in integral part of expressive arts.

Through the work of Ayla and her handler, Stacy Cook,



Ayla hard at work helping a patient create beautiful painting

(Continued on page 3)

(Continued from page 2)

patients and residents are able to create beautiful works of art in a failure free environment. As Ayla assists them with painting, residents who were non-verbal and show little response to care partners begin to interact with Ayla and are active participants in their care.

Thanks to Stacy Cook and the Neshoba County General for supplying information for this article.



Ayla's Award from the Mississippi Department of Mental Health, Division of Alzheimer's Disease and Other Dementia.



GFWC-MFWC Fundraiser:

CCI Wounded Veterans Initiative Program

The State of Mississippi's GFWC has chosen Ayla and her school (CCI Southeast) to help the Wounded Veterans Initiative Program by selling shirts/sweatshirts that was designed by Neshoba County Nursing Home Residents and Ayla. The design was created during their expressive therapy painting program. The flag is on the back of the shirts/sweatshirts with Ayla and the NH Residents acknowledgment below the flag. All of the proceeds from the sale of the shirts/sweatshirts will be given to Canine Companions for Independence Wounded Veterans Initiative Program.

[Click here](http://www.gfwc-mfwc.org/GFWC_MFWC_MarketPlace.html) for more information including the ordering form. For more GFWC-MFWC Marketplace Items, visit our website at www.gfwc-mfwc.org/GFWC_MFWC_MarketPlace.html.



Ayla with facilitator and handler Stacy Cook



Back of T-Shirt/Sweatshirt



Taken from "A History of the Mississippi Federation of Women's Clubs 1898-1998" by Tommye Hogue Rosenbaum.

The Early Years 1898-1912

Administration of Mrs. Robert E. (Elizabeth A.) Jones 1905-1908

- * Fifth president of MFWC

Highlights:

- * From Crystal Springs, MS.
- * Growth in the Federation continued.
- * MFWC began to adopt General Federation projects.
- * Clubwomen were urged to assess conditions that existed in their individual communities and to adjust their programs to best serve the people in their area
- * Mrs. Jones served for three years, as she completed the last year of Mrs. Lott's term.

GFWC—Home Life Partner

Canine Companions For Independence & Wounded Veteran's Initiative

GFWC is working with Canine Companions for Independence on its Wounded Veteran's Initiative. CCI has provided many assistance dogs to injured service men and women who are returning from the Iraq and Afghanistan wars. With the increase in wounded veterans who could benefit from an assistance dog, we want to do more. For a veteran making a new start putting their life back together from an injury, an assistance dog can provide the help they need to regain independence. For a veteran making a new start putting his or her life back together from an injury, an assistance dog can provide the help they need to regain independence.

As a GFWC-MFWC member you can help by:

- ★ Promote puppy raising. Volunteers are needed to raise puppies from eight weeks to 1-½ years old attending dog obedience classes and socializing the puppy in public settings. Assistance is needed in getting the word out on the need for volunteers.
- ★ Visit and tour a regional training center.
- ★ Meet the Canine Companions Chapter leadership near you and see how you can work together.
- ★ Arrange for a Canine Companions team to speak at your club meeting to learn more about assistance dogs and Canine Companions.
- ★ Volunteer at a center/office or staff a booth.
- ★ Assist with outreach to veteran

organizations, including presentations, outreach booth staffing, literature, as well as poster and video distribution.

- ★ Raise funds to help place a dog with a veteran.
- ★ Join Canine Companions Facebook page (www.Facebook.com/CanineCompanions) and help them build their network of "likes".
- ★ Follow Canine Companions on Twitter (@ccicanine).
- ★ Subscribe to their YouTube channel (www.YouTube.com/CanineCompanions) and their blog, Help is a Four-Legged Word (www.Blog.CCI.org).
- ★ Sign up to receive monthly e-newsletters on Canine Companions updates and forward the emails to your friends (www.CCI.org/sign-up).

For more information on CCI and the Wounded Veteran's Initiative, visit their website at <http://www.cci.org/site/c.cdKGIRNqEmG/b.4011033/k.D44E/Veterans.htm>.

Their Stories

Matthew Keil and Service Dog Gus

Matthew, a US Army Veteran from Colorado, enjoys traveling, hunting, martial arts and other sporting events. Matthew and his wife Tracy were married just six weeks when Matthew sustained severe combat injuries in Iraq, rendering him quadriplegic with only the use of his left arm. During his hospital stay he heard about Canine Com-

panions and decided to apply for a service dog.

During an intense two-week training program at Canine Companions, Matthew was matched with Gus III, a handsome yellow Labrador/Golden Retriever cross trained to respond to approximately 50 commands.

Matthew said, "My biggest struggle has been needing someone else to do things for me. I fell in love with Gus the first night he came home with us. No more do I have to depend on others all the time — and that means a lot!" There were only a couple of things Matthew could do by himself since the injury but now he said, "Gus allows me to be so much more independent. It's easier to get around and having a bud-



dy by my side to do things with has changed our lives."

Major David Rozelle and CCI Service Dog Domi

"I gave my last command as a cavalry officer, I thought, to secure the area and evacuate the casualties. Un-

fortunately, I was the casualty," Major David Rozelle, US Army says.

This wasn't his last command. Just 18 months post injury, he became the first US soldier with an amputation to return to the same battlefield since the Civil War.

"I wanted to prove to myself I could do it. What I've learned is that it means a lot to my men to see me -- missing my leg-- and still commanding," shares Maj. Rozelle.

Now, Maj. Rozelle is an inspiration to cadets, but he's not up there alone. Canine Companions Service dog Domi is by his side.

"The first time Domi joined me for a formal address and ceremony, she fell right into formation. She kept perfect parade rest during my address and when I gave her the command, she marched off the field with me in perfect time," says Maj. Rozelle. "I was so proud, I got down on my knees and loved on her."

"Sometimes, I have to show weakness and rest my leg on crutches. On those days, Domi's help is absolutely critical." Maj. Rozelle continues.

Domi's there all the time--- bringing him his leg from across the room or making his three boys laugh as she tries to shake the kitten off her back. Domi has changed Maj. Rozelle's life.

"I've spent ten years at war. I've served three tours of duty. And I've lost my leg. I've had some pretty bad days," Maj. Rozelle continues, "but I haven't had a bad day since Domi came into my life. From the moment she bounces out of her crate wagging her tale every morning to when my boys tell her goodnight--I've never been so happy before," Major Rozelle shares.

Jason and Napal

On a special operation mission

with the United States Air Force in South America in 1999, Jason broke his back when his vehicle flipped after being ambushed and crushed the lower half of his body.

A year and a half ago Jason received Canine Companions Service Dog Napal.

"I couldn't stand having to rely on someone else to take care of me," Jason says. "Being in special ops, they don't teach you very much humility. When you have that mentality, and that's the training that's been brought to you, to really humble yourself to have other people help you is extremely tough." he continues. "But I'm telling you, it's so much easier for a dog to do it."

"In fact out of everything I've done to try and improve my life, nothing's even come close to getting my service dog Napal," Jason concludes.

Jay Huston, Army Veteran and Service Dog Timo

Jay has undergone 10 surgeries for spinal injuries after he hit the ground hard from a parachute malfunction eight years ago at Fort Benning, Ga. Jay retired from the Army in 2004 after 20 years of service, but he didn't stop serving his country. He now works as a Senior CBRNE Analyst at the U.S. Northern Command in Colorado Springs. (CBRNE stands for Chemical, Biological, Radiological, Nuclear and High-Yield Explosives.) Jay helps prevent terrorists from using Weapons of Mass Destruction (WMDs) in the U.S

For more Veteran Stories, visit http://www.cci.org/site/c.cdKGIRNqEmG/b.4256663/k.9EFA/Veteran_Stories.htm

(pictures - top to bottom, David and Domi, Jason and Napal and Jay and Timo)



MFWC NEWS



Does your club have a website, let us know and we will add your link on the GFWC-MFWC website.



MFWC IS NOW TWEETING!!!

Follow us on Twitter for important Federation updates. Our twitter name is MS Women's Club @MSFWC.



Join MFWC on facebook at: <http://www.facebook.com/#!/pages/Mississippi-Federation-of-Womens-Clubs-Inc/155818214452373>.

FACEBOOK NOTIFICATIONS

If you would like to know when an update or note has been posted to the GFWC-MFWC facebook page, please LIKE the Mississippi Federation of Women's Clubs, Inc. page.



Email Address Needed

If you know someone who would like to receive GFWC-MFWC updates, notes, news and other items by email, please have them to email Lisa Harris at laharris@hughes.net and ask to be placed on the mass communication listing.



EMAIL ADDRESS CORRECTIONS

If your email address has changed in the last six months, please send your new email address to Lisa Harris.



Where Our Veterans Served

- ★ In 2011, 43,942 living veterans served during World War II, the Korean War and the Vietnam era.
- ★ Living veterans in 2011 who served during two wars and no other period:
 - ★ 876,663 served during both Gulf Wars
 - ★ 205,205 served in the Korean War and the Vietnam era
 - ★ 129,972 served during the World War II and the Korean War

MFWC NEWS



NEWS NEEDED!!!

If you have any news items that you would like to share with your MFWC Clubwomen, send it to la-harris@hughes.net.



Conventions Schedule

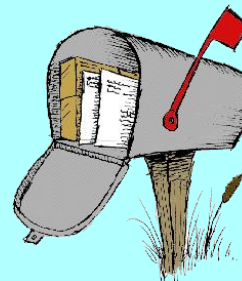
Feb 23rd	District 1 Convention, Poplarville, MS
March 2nd	District II Convention, Louisville, MS
March 9th	District III, Iuka, MS
March 16th	District IV, Batesville, MS
March 23rd	District V, Raleigh, MS
April 25 - 27	115th GFWC-MFWC State Convention, Eagle Ridge Conference Center, Raymond, MS

PHOTOGRAPHS ARE NEEDED!!

GFWC-MFWC pictures are needed. The pictures you submit will be used for the following projects, the website, the newsletters (General and Jun-iorette), the Mississippi Clubwoman, Power-Point presentations, dvd movies and the President's scrapbook.

When submitting your pictures, please include the following information with each picture: name of activity, people in picture, name of club(s), location, who took the picture and date taken. Please submit all pictures to Lisa Harris at laharris@hughes.net.

America is founded on the principle of freedom, justice, and liberty for all. Our nation's soldiers serve every day to protect our country and its ideals. Please take a sacred moment to remember those who sacrifice their lives every moment to achieve peace and democracy.





MFWC IMPORTANT DATES

March 2013

Youth Art Month (Arts), Read Across America Month (Education), American Red Cross Month, National Women's History Month

1	Read Across America Day—Dr. Seuss' Birthday (Education); Deadline to submit/postmark Sarah Peugh Scholarship Applications
3—9	National Consumer Protection Week (Home Life)
8	United National for Women's Rights and International Peace (International Outreach); International Women's Day (International Outreach & WHRC)
10	Daylight Saving Time Start
15	GFWC-MFWC State Chairman Reports due to GFWC Chairman
17	St. Patrick's Day
20	International Earth Day (Conservation), Vernal Equinox— Spring Begins
21	International Day for the Elimination of Racial Discrimination (International Outreach)
22	World Day for Water (Conservation & International Outreach); Education and Sharing Day (Education)
24	World TB Day (Home Life & International Outreach)
31	Easter

April 2013

National Poetry Month (Arts); Cancer Control Month (Home Life); National Financial Literacy Month (Home Life); World Health Day (International Outreach); Alcohol Awareness Month (Public Issues); National Trauma Awareness Month (Home Life); National Autism Awareness Month; National Child Abuse Prevention Month

1	April Fools Day
2	World Autism Day (Home Life and International Outreach)
12	Drop Everything and Read Day (Education)
14 - 20	National Library Week (Education)
21 - 27	National Volunteer Week
22	Earth Day (Conservation)
26	National Arbor Day (Conservation)
30	World Health Day (Home Life & International Outreach)

MFWC IMPORTANT DATES



May 2013

National Photography Month (Arts); America Stroke Month (Home Life); Mental Health Month (Home Life); National Arthritis Month (Home Life); Older Americans Month (Home Life);

2	National Day of Prayer (Public Issues)
3	World Press Freedom Day (International Outreach)
7	National Teacher Appreciation Day (Education)
13	Mother's Day
13 - 19	Children's Book Week (Education)
18	Armed Forces Day (Public Issues & MFWC PSP)
27	Memorial Day Observed (Public Issues & MFWC PSP)

June 2013

Keep America Beautiful Month (Conservation); Home Safety Month (Public Issues); Fireworks Safety Month; National Safety Month;

1	Deadline for Jennie Award Application to be submitted/postmarked to
4	International Day of Innocent Children Victims of Aggression (International Outreach)
5	World Environment Day (Conservation & International Outreach)
9	Abused Women and Children 's Awareness Day (D
9 -15	National Flag Week
14	Flay Day (Public Issues)
15	World Elder Abuse Awareness Day
19	Father's Day
20	World Refugee Day (International Outreach)
21	Summer Solstice (Summer)
24	Deadline for submissions to <i>Mississippi Clubwoman Magazine</i>
30 - 1	122nd GFWC International Convention in Hollywood, Florida

MFWC IMPORTANT DATES

July 2013

Recreation and Parks Month (Conservation); Fireworks Safety Month (Public Issues)

1 - 6 National Education Association Week

4 Independence Day (Public Issues)

12 Finance Committee/Executive Committee Meetings, GFWC-MFWC Headquarters, Jackson, Mississippi

13 Executive Board Meeting & Summer Institute, Schools for the Blind & Deaf, Jackson, MS

August 2013

National Immunization Awareness Month (Home Life);

1 US Air Force Day (GFWC-MFWC PSP)

4 - 10 National Fraud Awareness Week [phone and mail fraud] (Home Life)

4 Coast Guard Day (Public Issues)

6 National Night Out (Public Issues)

12 International Youth Day (International Outreach)

Where Our Veterans Served

- ★ 7.5 million veterans served in the Vietnam-era
- ★ 5.1 million served during the Gulf War (representing service from Aug. 2, 1990, to present)
- ★ 1.8 million in World War II (1941-1945)
- ★ 2.4 million in the Korean War (1950-1953)
- ★ 5.4 million in peacetime only





GFWC CONVENTION 2013

We are pleased to unveil the 2013 GFWC Annual Convention logo! Evoking the sun, sand, and warm waters of South Florida's Gold Coast, the logo will be featured on all things Convention. Follow the sun to join us on the beach for Federation friendship and fun.



NOW OPEN! Convention Registration

Registration for the 2013 Annual Convention in Hollywood, Florida, is now open! With our quick, secure, and user-friendly online system, registering for Convention has never been easier. Online registrants receive exclusive access to the 2013 GFWC Annual Convention Celebrity Stay raffle, and the option to pre-order your tickets to the Gold Coast Raffle at discounted prices. Visit www.GFWC.org/Convention

to complete your registration and to find further information on all things Convention. Registering early is the best way to guarantee your spot at meals, tours, and special events that may sell out. If you need assistance, contact GFWC Headquarters at 1-800-443-GFWC (4932) or Convention@GFWC.org. Early bird registration runs through **May 15**. Registration closes on **June 7**. See you at the beach!

Trouble with your hotel reservation? Contact The Westin Diplomat's in-house reservation team, Monday-Friday from 8:00 a.m.-6:00 p.m., ET at 954-602-8700. For further assistance, contact GFWC Convention and Meetings Manager Mary Louks at 202-347-3168 ext. 117.

CELEBRATE YOUR CLUB'S BIRTHDAY

Is your club celebrating a milestone anniversary (25, 50, 60, 70, 75, etc. years)? To receive a certificate and letter signed by International President Mary Ellen Laisler, acknowledging your club's accomplishment and to be featured in an upcoming issue of *GFWC Clubwoman Magazine*, please email GFWC@GFWC.org or call 1-800-443-GFWC (4392).

NEW! GFWC Pink Pen

Can't find a pen when you need it? Stock up on [GFWC Pink Pens](#) (\$1). This perfectly-balanced and ergonomically-designed ball-point pen will be comfortable to use whether you're hand-writing a grocery list or a dissertation. Black ink. Place your order today at www.GFWC.org/Marketplace.

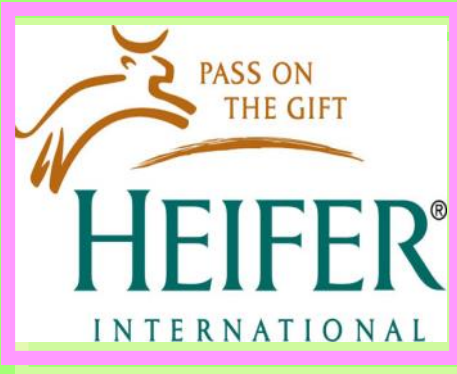


GFWC SPOTLIGHT



Women's History Month Event - March 13

Join GFWC in celebrating Women's History Month on Wednesday, March 13, from 4:00 p.m. to 6:00 p.m., at GFWC Headquarters in Washington, D.C. Network with fellow clubwomen, GFWC partners, and friends while enjoying a spirited and informative presentation on Women's Suffrage from Lisa Kathleen Graddy. Lisa is the curator of the Smithsonian's National Museum of American History's latest exhibition, *Woman Suffrage Parade, 1913*. RSVP to GFWC@GFWC.org or 800-443-GFWC (4392) by March 8.



Heifer International

Want your gifts to make an impact? Heifer International's Gift Catalog allows you to give a gift to a loved one and help children and families around the world receive training and animal gifts that help them become self-reliant. Purchase a goat that can provide milk for a family or even a gardener's basket to help a family start a sustainable farm. Visit www.Heifer.org/Gift-Catalog or call 1-888-5HUNGER (1-888-548-6437) to select your meaningful gift today.



Easter Seals

GFWC partner Easter Seals provides services to ensure that all persons with disabilities have equal opportunities to live, learn, work, and play. Assisting more than one million people with disabilities in more than 550 service centers, Easter Seals provides top quality, family focused, and innovative services personalized to meet the specific needs of community members. GFWC supports several Easter Seals initiatives, including CAMP HOPE, which provides camping opportunities for children of military families. For more information, including how your club can increase community awareness about Easter Seals, contact Janet Jamieson at 312-221-6827 ext. 7136 or email the GFWC Programs department at Programs@GFWC.org.



2012-2014 GFWC Club Manual Available Online

The 2012-2014 *GFWC Club Manual* is now online! Your source for all things GFWC, the new *GFWC Club Manual* features a brand-new design and updated information. Read about each of GFWC's advancement areas, community service programs, and special projects. You'll also find complete rules and criteria for GFWC awards, contests, and grants, along with the guidelines for updated reporting procedures. Access the full *GFWC Club Manual* at www.GFWC.org/ClubManual.

GFWC SPOTLIGHT



amazon.com
and you're done.™

SUPPORT GFWC WHEN YOU SHOP AT AMAZON.COM

Help strengthen GFWC's volunteer programs the next time you shop at Amazon.com by making your purchases through GFWC's Amazon.com affiliate link. The link enables members to direct **up to 15 percent** of their total purchases to the Federation. The link can be accessed here, or by clicking on the Amazon.com image at www.GFWC.org.



GET JAZZED FOR FUNDRAISING WITH COFFEE

Grounds for Change offers coffee with a twist: with every bag, their coffee focuses on the social, environmental, and financial implications of conducting business. With products personalized to GFWC, members can provide a personalized and premium product to fundraising supporters. The end result is a truly exceptional cup of coffee! For more information, go to www.GFWC.org/GFWCMembers.



**GENERAL FEDERATION
of WOMEN'S CLUBS**

GO NUTS FOR FUNDRAISING

Looking for an easy fundraiser that your supporters will love? Consider Uncle Al's Pecans. A family-owned and operated business founded nearly 30 years ago, Uncle Al's has been a part of the GFWC family for years. Uncle Al's can supply your club with nuts (raw, roasted or salted) chocolate or toffee coated items, fruit mixes and other snack products for your fundraising project. For more information, contact Uncle Al's .. Monday-Friday at (800) 877-4208

LET YOUR FLAG FLY

The time has never been better to let our Emblem-spangled banner wave. **GFWC Flags** come in 3'x5' and 4'x6' sizes. The GFWC flag is a perfect, highly visible, and easily portable way to brand any event, publicity table, or speaking engagement. Go to www.GFWC.org/Marketplace to place your order today.

WOMAN BEAN PROJECT

GFWC is proud to announce our latest endorsed fundraiser: **Women's Bean Project**.

Founded in 1989, the Bean Project is dedicated to helping women break the cycle of poverty and unemployment by providing stepping stones to self-sufficiency through social enterprise. Women who participate in the Bean Project receive employment training in the areas of gourmet food production and jewelry-making. Partner with this worthwhile organization and help your club at the same time by selling some of the beautiful jewelry they create. Literature will be mailed to club presidents in the coming weeks. Visit www.GFWC.org/Fundraising for more information

GFWC Has a New Handle

GFWC is now tweeting at two new addresses. Our Twitter handles have been updated to more accurately represent the Federation. Follow [@GFWCHQ](https://twitter.com/GFWCHQ) for important Federation updates, and [@GFWCPR](https://twitter.com/GFWCPR) for the latest information about our partners and resources. Get everything you need to know in real time.



GFWC SPOTLIGHT



This year marks the 90th anniversary of the purchase of GFWC Headquarters at 1734 N Street NW in Washington, D.C., by the General Federation of Women's Clubs. In 1901, the 56th U.S. Congress granted GFWC a Federal Charter, stipulating that we maintain our headquarters in Washington, D.C. The search for a suitable headquarters building centered on the stone-and-brick, five-story mansion near Dupont Circle. GFWC purchased the building at a cost of \$70,000, taking possession of it on April 1, 1922. At the 1922 convention in Chautauqua, New York, delegates raised more than \$105,000 to complete the payment for the building as well as begin necessary changes and redecoration. Gifts of furnishing and decorating the building and club residence came to the new GFWC Headquarters from State Federations and clubs throughout the country and around the world. GFWC's growth during the first half of the 20th century necessitated the purchase of 1738 N Street and 1728 N Street in the 1950's. In December 1991, GFWC Headquarters was designated a

National Historic Landmark by the National Park Service. Most of the public rooms, such as the drawing room, the solarium, and the dining room remain in or have been resorted to their original condition. [Click here to view historic photos of our Headquarters home](#)



Every year in the United States, about 71,500 women are diagnosed with a gynecologic cancer, and approximately 26,500 women die from one. The Inside Knowledge: Get the Facts About Gynecologic Cancer campaign raises awareness of the five main types of gynecologic cancer: cervical, ovarian, uterine, vaginal, and vulvar. The campaign encourages women to pay attention to their bodies and know what is normal for

them, so they can recognize the warning signs of gynecologic cancers and seek medical care. Inside Knowledge offers information and free resources in English and Spanish about the most common gynecologic cancers. For more information contact Alexandra Vaughn at Alexandra.Vaughn@Ogilvy.com.



Pinwheels Are Back!

You are invited to participate in Prevent Child Abuse America's national campaign, *Pinwheels for Prevention*, using the pinwheel as the symbol for child abuse prevention. Use these pinwheels to raise awareness and funds, and to engage people in new ways. You will be able to order pinwheels through each state chapter in August and September. Learn more about the campaign at www.PinwheelsforPrevention.org. Prevent Child Abuse America has also been chosen as a 2012 Top Rated Children and Families Award winner. Congratulations!



Support the GFWC Signature Project

Domestic Violence Awareness Month will be here soon! Support the GFWC **Signature Project** by planning a fundraising event during the month of October. Funds donated to the GFWC Signature Project Fund will go toward the Success for Survivors Scholarship, which provides scholarships for survivors of intimate partner abuse to pursue higher education. These scholarships will change lives by allowing survivors to receive training, provide for their families, and gain the confidence to make a difference in their world. For ideas on how to support the GFWC Signature Project during October and all year round, read the [GFWC Signature Project Advancement Guide](#) in the GFWC Club Manual.



GFWC SPOTLIGHT



Program Spotlight - INMED Partnership For Children

INMED Partnerships for Children, a **Juniors' Special Project**: Advocate for Children Partner, rescues children from the immediate and irreversible harm of disease, hunger, abuse, neglect, or violence, and prepares them to shape a brighter future for themselves and the next generation. Clubwomen are invited to help INMED advocate for children by taking part in their **Face the Challenge Campaign**. The

campaign is simple. Pick a campaign area; mobilize your club; and raise money and awareness to bring urgently needed solutions to vulnerable children. Visit www.INMED.org/Face-the-Challenge to identify your challenge and download the resources or contact INMED's GFWC Partner Liaison, Joey Shanahan at 310-764-0955 ext. 105 or JShanahan@INMED.org for more information.



Partner Spotlight - Sew Much Comfort

GFWC Partner, Sew Much Comfort, provides free adaptive clothing to support the unique needs of our wounded service members from all branches of the military and National Guard. Because the majority of injuries require large prosthetics or casts, it can be challenging or impossible to wear regular clothing. Wounded service members are often restricted to wearing hospital gowns. Sew Much Comfort produces adaptive clothing that appears like typical civilian apparel. Since its founding in November 2004, Sew Much Comfort has distributed more than

115,000 pieces of this clothing to wounded service members. By volunteering with or donating to Sew Much Comfort, you have the chance to make a difference to the dignity and self-esteem of wounded service members. For more information, visit www.SewMuchComfort.org.

shot @life

Support Shot@Life. Get a Free Journal!

History plays an important role at GFWC. Recording major milestones for your club and for your everyday life is an excellent way to keep memories fresh and available to future generations. **GFWC partner** Shot@Life is working together with Paper Coterie to offer a free* personalized journal to document all of life's important moments, while also giving kids around the world a shot at life. [Visit Paper Coterie's website to](#)

[create your personalized journal](#). Enter the coupon code **shot@lifsummer** during checkout, and not only will you receive a free journal, but for each journal ordered, Paper Coterie will donate \$2 to Shot@Life. What's more, once you order your journal using the coupon code, 15% of all your future Paper Coterie purchases will be donated to Shot@Life. Order a journal; give a child a shot@life; start recording your own milestones. *Shipping and handling is \$7.



NEW! GFWC Endorsed Fundraiser

We are pleased to add **Flower Power Fundraising** to our list of endorsed fundraisers for GFWC clubs. Flower Power Fundraising offers you the chance to buy and sell flowers and bulbs for gardens all over your community. Earn a 50% profit from sales while taking pride in a fundraiser

that helps to beautify the community. An extra 5% from every sale also goes directly to GFWC to support national projects. The company's fall catalog was recently mailed to all GFWC club presidents. For additional information on this newest opportunity, and to request a free catalog, visit www.FlowerPowerFundraising.com/GFWC.



GFWC SPOTLIGHT



This past year, **GFWC members and clubs raised \$78,300 for the U.S. Fund for UNICEF.** This is the highest amount that GFWC has raised for UNICEF in one year since our organizations began working with each other more than six decades ago. Your persistent support has contributed to the success of numerous UNICEF campaigns and initiatives.

This year, consider helping UNICEF continue to save and improve lives across the globe by supporting the Healthy Villages Program. This life-saving program empowers villagers in the Democratic Republic of the Congo to improve and maintain their own sanitation systems and adopt healthy hygiene practices. To learn more about how you can participate in this campaign, visit www.UNICEFUSA.org/GFWC refer to the International Outreach section of the Club Manual at www.GFWC.org/ClubManual.



Light Your Way with GFWC

Let GFWC help you find your way in the dark. The [GFWC Mini Flashlight Key Chain](http://www.GFWC.org/Marketplace) (\$4 each or 5 for \$15) is the portable way to have a light when you need it. The bright light illuminates a large area to ensure greater visibility in dim lighting. Durable and lightweight, you'll keep this with your keys for years to come. Go to www.GFWC.org/Marketplace to order.



GFWC Conservation partner, Alliance for Community Trees, supports the needs of communities, nonprofits, businesses, and others engaged in urban forestry. Its founders shared a vision of healthy, functioning urban ecosystems nurtured by a broad base of community stewards. Since its founding in 1993, ACTrees has grown into a vibrant network of more than 200 nonprofits and agencies that promote the environmental, economic, public health, and social benefits

of trees and urban forests. With the combined effort of local ACTrees member organizations and their partners, 15 million trees have been planted. For more information on ACTrees, contact Carrie Gallagher at Carrie@ACTrees.org.



Where Our Veterans Live

- ★ 3 - Number of states with 1 million or more veterans in 2011. These states were California (1.9 million), Florida (1.6 million) and Texas (1.6 million).
- ★ Maine, Montana, Virginia and Wyoming - 12+% of the 18 and over population are veterans
- ★ Alaska in 2011 - 14% of the population over 18 were veterans.

MFWC IN THE NEWS!

Come Monday night

Regina Butler
Pontotoc Progress

She's the queen of Christmas parades in Pontotoc. Dot Hardin can remember when the very first parade rolled down Main Street in 1953.

"I remember this so vividly because I was a Jaycette and Claude [her husband] was a Jaycee."

Her daughter, Genie, who was a girl at the time, was in that very first parade, "with Mrs. Mooreland's group."

Hardin said as the years went by the Jaycees and Jaycettes had floats in the parade and she was also part of the parade through the Mississippi Antique car Club.

"In 1956 I remember when the cars came for the parade the late Stanley Faulkner filled those old cars with gasoline. We even had people come in from Memphis for that parade."

Hardin said she and her husband had this 1904 Premier Car that they

entered the parade one year during those early years of the parade and the announcer couldn't remember what kind of car it was, "and there are only three of them like it in the world."

In fact, years later, "my grandchildren rode in the parade in that old car with the DAR."

Through the years Hardin has been active in participating in the Christmas parade through the Woman's Club and her children's involvement through school and college.

"I have sat through the cold and storms going to the parade," she said. "And people are good to me by letting me stand in front of them since I am so short, sort of like Zaccheus," she joked.

And now that the sixtieth parade is upon us will we find Dot Hardin there?

She smiled.

"Unless I'm deathly sick or the doctor won't let me, I shall be there with bells on."

NEWS & Notes

Wild Weekend—Mississippi Juniette Retreat

Five GFWC Mississippi Juniette clubs attended One Wild Weekend this past July. Held at Past GFWC Mississippi State President Carolyn Huey's home, the retreat was an activity-filled weekend away for the Juniettes to learn about GFWC. The retreat also included a trip to the Mississippi Veterans Memorial Cemetery in Newton.

(From the GFWC News and Notes for November 3, 2012)



20th Century to host Christmas Brunch

By Amanda McBride
The Choctaw Plaindealer

Celebrate the season at a Christmas Brunch with the Ackerman Twentieth Century Club on December 8. The Christmas Bruch will feature beautiful tablescapes, delicious dishes, door prizes, guest speaker, special music and vendors.

The guest speaker



will be Rita Sweatt who will be presenting her monologue "The

SUBMITTED PHOTO
(Left) Rita Sweatt will be presenting her monologue "The Innkeeper's Wife" at the Christmas Brunch on December 8. See any Twentieth Century Club member to get your ticket.

Innkeeper's Wife." She speaks to ladies in retreat settings and church meetings and

Christmas Brunch sponsored by the GFWC Ackerman Twentieth Century Club





GFWC Advancement Area:

MEMBERSHIP



Membership Shoe Store

The **GFWC Coveted Shoe Award** is a brand-new addition to GFWC. In keeping with the Membership Committee's theme, "Membership--the 'Sole' of the Federation," the award will recognize one club in each membership category for excellent membership recruitment and retention efforts. The award will be presented at GFWC Annual Conventions.

GFWC offers **\$100 grants** to State Federations and districts to help underwrite new club activities. Eligible activities include projects to federate a new club or re-federate an existing woman's club in a GFWC District or State. Clubs that federated three months or less prior to the application submission are also eligible for funding. Applications are available at www.GFWC.org.

Seasonal Recruitment

Winter seasonal recruitment is in full swing. Last season clubwomen across the country recruited 1,105 new members! We need to keep the momentum going this winter. Don't forget to invite friends and family members who are not already members to your club meetings and introduce them to the great work you do in your communities and the benefits of Federation. Clubs that recruit three or more new members will be recognized in *GFWC Clubwoman Magazine*.

Star Recruitment Pins and Circles are GFWC's recruitment incentive for clubwomen. The first five awards, recognizing members that have recruited five to 29 new members, are small, star-shaped pins with a butterfly clasp and a chain that attaches to the stem of the GFWC Member Pin. Members that have recruited 30 to more than 50 new members will be awarded the appropriate color circles to wear behind their star pins. These awards are cumulative and cross administrations. There are ten levels.



GFWC members who recruit:

- ★ Five to nine new members receive a *white* star.
- ★ 10 to 14 new members receive a *red* star.
- ★ 15 to 19 new members receive a *blue* star.
- ★ 20 to 24 new members receive a *silver* star.
- ★ 25 to 29 new members receive a *gold* star.

[Use this form](#) to submit any star pin winners to your State Membership Chairman. Let's have another outstanding membership recruitment season! [Please report your new members by March 1 so we can all celebrate your accomplishments!](#)





GFWC Signature Project:

Domestic Violence Awareness and Prevention

Did you know that one in three women, on billion total, will be raped or beaten in her lifetime. Join GFWC and the global One Billion rising movement to demand an end to this atrocity by walking, dancing, and rising up in an act of solidarity and refusal to accept violence against women and girls as a given. For more information about how to initiate your own "raising" visit www.onebillionrising.org. GFWC Resolution 014-240, below is our statement on the United National Convention on the Elimination of All Forms of Discrimination Against Women.

United Nations Convention on the Elimination of All Forms of Discrimination Against Women (CEDAW)

(formerly "United Nations Conferences on Women"; Convention 1994; Amended 1998; Amended 2002; Amended 2006; Reviewed 2010)

WHEREAS, The Convention on the Elimination of All Forms of Discrimination Against Women (CEDAW) establishes basic international principles of equality for women in areas of civil, economic, education, employment, health care and political rights; and

WHEREAS, CEDAW is regarded as the most important international mechanism for women's equality; and

WHEREAS, Discrimination against women continues to exist, violating human rights, fostering gender based violence, hampering growth and prosperity of society, and limiting the full potential of women; and

WHEREAS, CEDAW has been ratified by more than 90% of the United Nations Member States; and

WHEREAS, The United States is a leader in the promotion of human rights;

and

WHEREAS, Lack of U.S. ratification has hindered our country's leadership in promoting human rights, democracy and the rule of law; and

WHEREAS, U.S. failure to ratify CEDAW allows countries with weak human rights records to neglect and undermine human rights for women; therefore

RESOLVED, That the General Federation of Women's Clubs supports immediate ratification and implementation of the United Nations Convention on the Elimination of All Forms of Discrimination Against Women (CEDAW); and further

RESOLVED, That the General Federation of Women's Clubs urges its members and member clubs to become active supporters of CEDAW ratification by contacting their United States Senators and the White House to urge their support for U.S. ratification.



ONE BILLION RISING
STRIKE | DANCE | RISE!

Something To Think About... Then Act On... Support Domestic Violence Prevention

- * Every 9 second in the US a woman is assaulted or beaten.
- * Around the world, at least one in every three women has been beaten, coerced into sex or otherwise abused during her lifetime. Most

often, the abuser is a member of her own family.

- * Domestic violence is the leading cause of injury to women - more than car accidents, muggings and rapes combined.
- * Studies suggest that up to 10 million children witness some form of domestic violence annually.
- * Nearly 1 in 5 teenage girls who have been in a relationship said a boyfriend threatened violence or self-harm if presented with a breakup.
- * Everyday in the US, more than three women are murdered by their husbands or boyfriends.
- * Domestic violence victims lose nearly 8 million days of paid work per year in the US alone—the equivalent of 32,000 full-time jobs.
- * Based on reports from 10 countries, between 55 percent and 95 percent of women who had been physically abused by their partners had never contacted non-governmental organizations, shelters, or the police for help.
- * The costs of intimate partner violence in the US alone exceed \$5.8 billion per year: \$4.1 billion are for direct medical and health care services, while productivity losses account for nearly \$1.8 billion.
- * Men who as children witnessed their parents' domestic violence were twice as likely to abuse their own wives than sons of nonviolent parents.
- * Nearly three out of four (74%) of Americans personally know someone who is or has been a victim of domestic violence.



GFWC Signature Project: Domestic Violence Awareness and Prevention

MYTHS About Domestic Abuse

Domestic violence only occurs in a small percentage of relationships.

Estimates report that domestic violence occurs in 1/4 to 1/3 of all intimate relationships. This applies to heterosexual as well as same-sex relationships.

Women batter men too.

Although this is true, in 95% of heterosexual domestic violence cases, men are abusive toward women.

Battered women are masochistic/crazy/weak/enjoy being abused.

This places the burden of guilt for being beaten on the survivor, and fails to hold batterers accountable for their choice to be violent to their partners. No one enjoys being abused, regardless of how much they may love their partner.

Middle and upper class women do not get battered as frequently as poor women.

Domestic violence occurs in all socio-economical levels. Because women with money usually have more access to resources, poorer women tend to utilize community agencies, and are therefore more visible.

Women of color and immigrant women are battered more often

than white women.

Again, domestic violence occurs across the board in all communities regardless of race, age, nationality, sexual orientation, economic status, education, etc.

Batterers are violent in all their relationships. Batterers "lose control" and become violent.

Batterers choose to be violent toward their partners in ways they would never consider treating other people. Domestic violence is about batterers using their control, not losing their control. Their actions are very deliberate.

Batterers also beat their children.

Not all batterers are also physically abusive to their children. However, all children living in a home with domestic violence experience emotional and psychological abuse when one parent is violent towards the other.

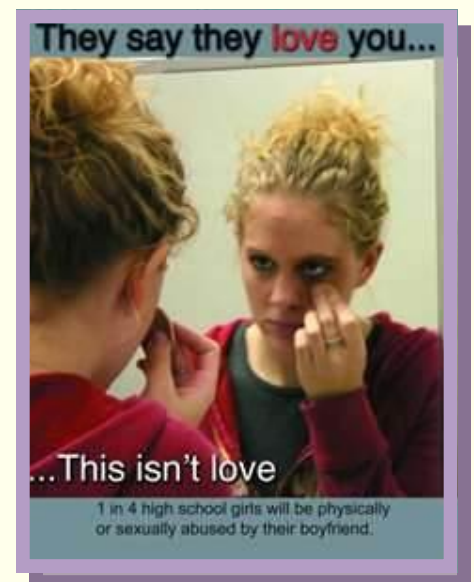
Once a battered woman, always a battered woman.

While some battered women have been in more than one abusive relationship, women who receive domestic violence services are the least likely to enter another abusive relationship

Dating Violence ...

⊗ Approximately one in five female high school students reports being physically and/or sexually abused by a dating partner.

- ⊗ Forty percent of girls age 14 to 17 report knowing someone their age who has been hit or beaten by a boyfriend.
- ⊗ Date rape accounts for almost 70% of sexual assaults reported by adolescent and college age women; 38% of those women are between 14 and 17 years old.
- ⊗ Females ages 16-24 are more vulnerable to intimate partner violence than any other age group - at a rate of almost triple the national average.



- ⊗ Half of the reported date rapes occur among teenagers.
- ⊗ 20% of surveyed male students report witnessing someone they go to high school with physically hit a person they were dating.
- ⊗ 45% of girls know a friend or peer who has been pressured into either intercourse or oral sex.
- ⊗ One in three teens reports knowing a friend or peer who has been hit, punched, kicked, slapped or physically hurt by their dating partner.



February is Teen Dating Violence Awareness and Prevention Month

Facts

Teen Dating Violence (TDV) is an unhealthy relationship that starts early in life and can last a lifetime. Dating violence occurs when harmful behaviors are repeated, creating a pattern of violence.

TDV includes, but is not limited to, four types of behaviors. Below are examples under each type of behavior, but this list is not inclusive of all behaviors that an abuser may display:

- ⊗ Physical Abuse - hitting, kicking, burning, holding down, hair pulling and choking/strangling
- ⊗ Verbal Abuse - Yelling, Name-calling, Threatening to hurt or kill, belittling accomplishments and constant blaming
- ⊗ Sexual Abuse - Committing rape or incest, treating others as sex objects, wanting sex after abuse, calling fat, ugly, no good in bed, constant sexual demands and forcing pregnancy or abortion
- ⊗ Emotional Abuse - Making false promises to end abuse, isolating from others, abusing pets, monitoring conversations and making account or time

For more information about TDV, check out the American Bar Association's 2006 National Teen Dating Violence Prevention Initiative, Liz Claiborne's Love is Not Abuse, or you can contact the Family Violence Prevention Center at (614) 466-0306 for additional resources



MFWC Domestic Violence Awareness & Prevention Program:

MFWC Announces Domestic Violence Awareness Grant for 2013

The GFWC-Mississippi Federation of Women's Clubs, Inc. is proud to announce a new grant for 2013. The Domestic Violence Awareness Grant is available for a center or organization connected with Domestic Violence Awareness.

Any interested GFWC-MFMC club will need to contact domestic violence organizations in their area to see if they have a specific need or funding requirement.

The interested club will then complete the application which can be found on our website at www.gfwc-mfwc.org/GFWC_MFMC_Forms.html.

Please note that the application must be submitted by the GFWC-MFMC club and not the Center or Organization.

All applications must be mailed to Suzanne Poynor, GFWC-MFMC Pres-

ident by **April 5, 2013**. Our attentions are to announce the winners at the GFWC-MFMC State Convention in April.

Thank you for your help in preventing Domestic Violence in Mississippi.

Suzanne Poynor (GFWC-MFMC President), Tammie McCoy (GFWC Domestic Violence Committee Member) and Lynda Love (GFWC-MFMC Domestic Violence Chair).

★ Sponsored the First Annual Walk for Autism Health Awareness in Batesville, MS on 9/29/12.

★ #1, Brandy Copeland and Brooks Ann Locke help participants sign in. Photo by Sharon Hudson.

★ #2, J.J. Heafner and Chanda Lantern preparing for the walk. Photo by Sharon Hudson.



Batesville Junior Woman's League





- ★ #3, Memorial Day Program on the Square in Batesville. Photo by Sharon Hudson.
- ★ #4, Pretty In Pink!!! October Meeting of BJWL for Breast Cancer Awareness. Back row: Chanda Lantern, Sharon



Jean Drop

Drop off your gently worn or a new pair of jeans and help support the Batesville Junior Woman's League

Make A Difference Day Project

Jeans of all sizes accepted.

Drop off locations include: William H. Polk & Co., First United Methodist Children's Center, BJH, SPHS, and First Security Bank. The final drop off will be at Scare on the Square on October 27th.

For more information call 662.609.0973

Hudson, Chris Cobb, Lindsey Boyette, and Tracy Brummett. Front row: Tawana Hill, Linsee Little, J.J. Heafner, and Misty Wright. Photo by Caleb Lantern son of Chanda Lantern

- ★ Sponsored the "Make A Difference Day Project - Jean Drop".
 - ★ #5, Checking out jeans donated for the BJWL's "Make A Difference Day Project - Jean Drop". Left to Right - Misty Wright, Chanda Lantern, Deana Pittman and Sharon Hudson, Picture by Haley Wilson.
 - ★ #6, The "Pretty Ambitious Social Club" at South Panola High School donating blue jeans for "Jean Drop". Photo by Kevin Coakley.





Fine Arts Club members attended the annual Memorial Day Observance on the Town Square on Monday, May 28th. Member Janae Harrelson sang the National Anthem and members distributed programs designed and printed by member June Vaughn. Member Carol Shoemaker coordinated the event with the local VFW.



In honor of National Teacher Day, Public Officials Recognition Week, and Nurse Appreciation Week, Fine Arts Club of Bruce members provided cookies to prepare 25 trays that were delivered on Tuesday May 8th to local teachers and education personnel, public officials, nurses, and library personnel.

Fine Arts Club of Bruce



For the 9th year, Fine Arts Club of Bruce had a Relay for Life Team whose 2012 slogan was "Take the Thorns Out of Cancer - Help Find a Cure" with the campsite decorated in a Valentine's theme. The team raised over \$5,000 from various fundraisers including ice cream sales, a salad luncheon, luminaria sales, chances on \$500 in Premier Jewelry and member contributions, to donate to the American Cancer Society.



Fine Arts Club of Bruce assists with the monthly birthday parties at the Bruce Community Living Center. At the July party, club members Sandra Pope and June Vaughn served cupcakes and ice cream provided by the club.



Fine Arts Club and 20th Century Club of Bruce



Fine Arts Club and 20th Century Club of Bruce joined together to hold a bake sale in May to raise funds to offset expenses for the 5K Run for History sponsored by the clubs at the annual Bruce Sawmill Festival that would benefit the Bruce Forestry Museum. Members of both clubs assisted with the event.





Members placing wreaths on Veterans graves for Wreaths Across America.

Members pledge allegiance to the flag of the United States while enjoying an international flair of Buddhist prayer flags from Tibet

Members enjoy a "Paint Party" with daughters and young friends.

GFWC- MFWC Lanier Club



"Let us remember the service of our veterans, and let us renew our national promise to fulfill our sacred obligations to our veterans and their families who have sacrificed so much so that we can live free."

~Dan Lipinski





Ackerman Twentieth Century Club hosted the "Celebrate the Season Brunch" with guest speaker Rita Sweatt. Mrs. Sweatt did a Biblical Character Portrayal of the "The Innkeeper's Wife". Courtney Thomas Hood provided the special music. Vendors were on hand for that last minute Christmas shopping.

Each table had a different tablescapes done by 20th Century members. The menu was done by one of the club members and included Christmas Morning Casserole, Homemade Quiche, Fruit Skewers, Mini Pancake Stacks, Homemade Angel Biscuits, homemade jellies and jams and made from scratch Mulled Cider.



ACKERMAN TWENTIETH CENTURY CLUB

*Celebrate the Season
at a
Christmas Brunch
at the
Community Center
in Ackerman*

**Saturday, December 8th
9:00 - 11:00 am**

Featuring

- *Beautiful Tablescapes
- *Delicious Dishes
- *Door Prizes
- *Featured Speaker
- *Special Music

*Vendors for your shopping pleasure

*Hosted by
FWC Ackerman Twentieth Century Club*



\$20.00



The Decatur Woman's Progressive Club and the Union Present Day Club invite you to honor our Armed Forces by attending "Celebration of Freedom 2012" from 10 to 3, Saturday November 10th in downtown Decatur and East Central Community College Baily Stadium. Honor service members, living or deceased, by purchasing balloons for \$10 in their name and attending the parade and ceremony. The program will conclude with a balloon release and your service member's name will be called for all to hear. Proceeds will benefit MS Veterans Memorial Cemetery and local veterans organizations.

Decatur Woman's Progressive Club and the Union Present Day Club



Top photo shows Decatur Woman's Progressive Club President Ada McGrevey with her Father's uniform he wore when he returned from the Pacific in WWII.

Middle photo shows Decatur Woman's Progressive Club Members preparing bags to distribute to veterans at Celebration of Freedom Event.

Bottom photo shows Decatur Woman's Progressive Club President Ada McGrevey on left and past President Dianne Smith securing balloons before the event, with the assistance of Milton Smith.



Every year, our club sponsors a Christmas party for patients at East Mississippi State Hospital. We have sandwiches, desserts, presents, sing Christmas carols with them and just enjoy our time together. Top picture shows our members preparing the table for the patients. Bottom pictures shows members who participated in the Christmas Party.

Decatur Woman's Progressive Club





Members placed flags on the graves of veterans for Veterans' Day.

In the photos, left to right: Vicki Kelley, Peggy Summers-Jones, Tommye Rosenbaum, Phyllis Cox

Thursday Club of Walnut Grove



Raleigh Woman's Club



Members donated to the DV Shelter in Laurel, MS.

Members rode in Raleigh Christmas Parade. We Won Third Place for our float.



Members set up "Angle Tree" at library.

Members read to 2nd grade for Read Across America Day.





Members attending Summer Institute in Jackson.



New members installations. They received a yearbook and MFWC pin.

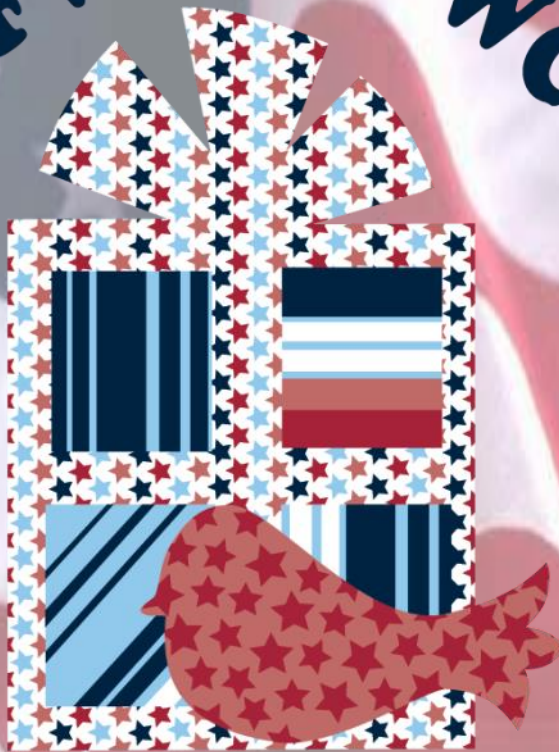
Cosmopolitan Club of Petal

Tasting Luncheon in December- Members prepare a dish in large quantities for around 250 ticket holders to sample. This is an annual fundraiser. This year's theme was "Christmas at the Lodge".



Call All Clubwomen

GFWC-MFWC



**GFWC-MFWC 115th State
Convention, April 25-27,
2013 at Eagle Ridge
Conference Center,
Raymond, MS.**

**Honoring Past Gifts While
Celebrating the Present
...Freedom to Volunteer!**

Deadline for convention registration is April 11, 2013. Deadline for hotel registration is April 4, 2013. Registration package includes Official Call to Convention, Registration and Meal Reservation Form and Credential Card. Please return registration/meal Form and Credential Card to Diane Rouse by April 11, 2013.

State Convention 2013